

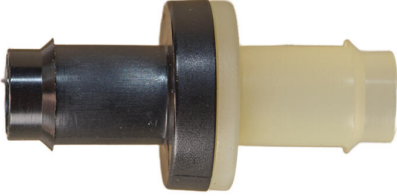
A large version of the logo, featuring a blue oval with a white arrow pointing right, positioned on a horizontal line. To the right of this icon, the word "Pneuline" is written in a large, bold, black, serif font, and "Supply, Inc." is written below it in a smaller, grey, serif font. Below the main logo, the text "MANUFACTURER OF PLASTIC VALVES, FILTERS, & BULKHEADS" is written in a blue, sans-serif font.

**Pneuline** Supply, Inc.  
MANUFACTURER OF PLASTIC VALVES, FILTERS, & BULKHEADS

## **PNEULINE SUPPLY**

Pneuline Supply manufactures high-quality products with ISO 9001:2015 standards, ensuring precision and reliability. With customizable features—including cleanroom production, diverse materials, and various sizes—we tailor solutions to meet unique customer needs. Our commitment is to consistently deliver excellence, providing superior products and service to every customer.

## MPV 6B SERIES



The MPV-6B Series is built for systems that require **maximum flow capacity** paired with dependable one-directional control. Featuring a **3/8" barbed** connection and a high-flow internal architecture, this valve supports significantly increased throughput while maintaining tight, reliable sealing. Each unit is subjected to **100% leak-decay testing** in our controlled production environment to ensure long-term performance and consistency.

---

**Durable Body Material Options:** choose from a range of high-performance resins engineered for chemical resistance, mechanical strength, and environmental durability:

- **Kynar® (PVDF)**
- **Nylon** (*glass-filled grade available*)
- **Acetal Celcon® M90**
- **Polycarbonate**
- **Polypropylene**

**Diaphragm Material Options** Select the diaphragm material that best aligns with your application's compatibility and performance needs:

- **EPDM**
- **Viton®**
- **Fluorosilicone**
- **Kalrez®**
- **Silicone USP Class VI**
- **FDA-grade Viton®**

### Engineered for Customization

For applications with unique flow, compatibility, or regulatory requirements, we offer **custom molding** and fully configurable resin/diaphragm combinations. Our engineering team works closely with you to develop solutions tailored to your system's exact specifications.

### Optimized for High-Demand, High-Flow Applications

With its enlarged barb size, high-flow design, and purity-focused construction, the MPV-6B Series is ideal for medical devices, laboratory systems, industrial equipment, and high-purity fluid handling environments where elevated flow rates are essential.

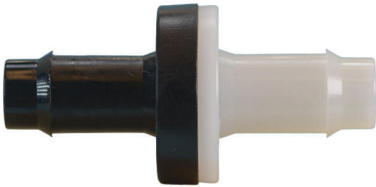
*[Flow and Crack Pressure Chart- High Flow](#)*

---

***Need more information or looking to tailor one of our valves for a specific application?***

***Complete the form below and our team will promptly connect with you to discuss your requirements and ensure you get the right solution.***

[Contact Form](#)



## MPV 5B SERIES

The MPV-5B Series is designed for systems that demand **greater flow capacity** and consistent one-directional control. With its **5/16" barbed** connection and optimized high-flow internal geometry, this valve supports increased throughput while maintaining dependable sealing performance. Every unit is subjected to **100% leak-decay testing** within our controlled production environment to ensure reliability from the first cycle to the last.

---

**Versatile Body Material Options:** Choose from a range of durable, engineering-grade resins to match your chemical and mechanical requirements:

- **Kynar® (PVDF)**
- **Nylon** (*glass-filled grade available*)
- **Acetal Celcon® M90**
- **Polycarbonate**
- **Polypropylene**

**Diaphragm Material Selections** Dial in the ideal balance of compatibility, flexibility, and performance with multiple diaphragm choices:

- **EPDM**
- **Viton®**
- **Fluorosilicone**
- **Kalrez®**
- **Silicone USP Class VI**
- **FDA-grade Viton®**

### Engineered for Customization

For applications with unique flow, compatibility, or regulatory needs, we offer **custom molding** and fully configurable resin/diaphragm combinations. Our engineering team works closely with you to create solutions tailored to your system's exact requirements.

### Optimized for High-Demand Applications

With its high-flow design, robust construction, and purity-focused materials, the MPV-5B Series is an excellent choice for medical devices, laboratory equipment, industrial systems, and high-purity fluid handling environments.

[Flow and Crack Pressure Chart - High Flow](#)

---

***Need more information or looking to tailor one of our valves for a specific application?***

**Complete the form below and our team will promptly connect with you to discuss your requirements and ensure you get the right solution.**

[Contact Form](#)

## MPV 4BH SERIES



The MPV-4BH Series is engineered for applications requiring enhanced flow capacity without compromising sealing integrity. Featuring a 1/4" barbed connection and a **high-flow internal design**, this valve delivers superior throughput while maintaining reliable flow control. Every unit undergoes 100% leaked-decay testing in our controlled production environment to ensure consistent performance and long-term durability.

---

**Customizable Body Materials:** choose from a wide range of engineering-grade resins to meet your system's chemical, mechanical, and environmental requirements:

- **Kynar® (PVDF)**
- **Nylon (glass-filled grade available)**
- **Acetal Celcon® M90**
- **Polycarbonate**
- **Polypropylene**

**Diaphragm Options:** Select the diaphragm material that best aligns with your application's chemical compatibility and performance needs:

- **EPDM**
- **Viton®**
- **Fluorosilicone**
- **Kalrez®**
- **Silicone USP Class VI**
- **FDA-grade Viton**

### Tailored Engineering

For specialized flow, compatibility, or regulatory requirements, we offer custom molding and fully configurable resin/diaphragm combinations. Our engineering team partners with you to develop precision-matched solutions optimized for your unique application.

### Built for Demanding, High-Flow Environments

Designed for purity, performance, and elevated flow capacity, the MPV-4BH Series delivers exceptional reliability for medical devices, laboratory systems, industrial equipment, and high-purity fluid handling applications.

[Flow and Crack Pressure Chart - High Flow](#)

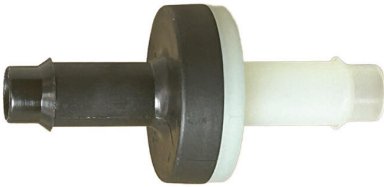
---

***Need more information or looking to tailor one of our valves for a specific application?***

***Complete the form below and our team will promptly connect with you to discuss your requirements and ensure you get the right solution.***

[Contact Form](#)

## MPV 4B SERIES



Built for dependable performance, the MPV-4B Series provides reliable flow control in a robust 1/4" barbed configuration. Each valve is precision-engineered and undergoes 100% leak-decay testing in our controlled production environment to ensure consistent sealing, durability, and long-term reliability.

---

**Customizable Body Materials:** Select the ideal resin to meet your application's performance, chemical compatibility, and environmental requirements:

- **Kynar® (PVDF)**
- **Nylon (glass-filled grade available)**
- **Acetal Celcon® M90**
- **Polycarbonate**
- **Polypropylene**

**Diaphragm Options** Optimize flexibility, chemical resistance, and functional performance with a wide range of diaphragm materials:

- **EPDM**
- **Viton®**
- **Fluorosilicone**
- **Kalrez®**
- **Silicone USP Class VI**
- **FDA-grade Viton®**

### Tailored Engineering

For specialized or demanding applications, we offer custom molding and fully configurable resin/diaphragm combinations. Our engineering team collaborates with you to develop precision-matched solutions that meet unique performance, regulatory, or environmental requirements.

### Built for Critical Environments

Designed for purity, performance, and customization, the **MPV-4B Series** delivers exceptional quality and reliability for medical, laboratory, industrial, and high-purity fluid systems.

[\*Flow and Crack Pressure Chart - Standard Flow\*](#)

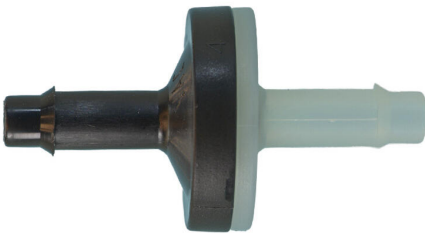
---

***Need more information or looking to tailor one of our valves for a specific application?***

***Complete the form below and our team will promptly connect with you to discuss your requirements and ensure you get the right solution.***

[Contact Form](#)

## MPV 3B SERIES



Engineered for dependable performance, the MPV-3B Series provides reliable flow control in a compact **3/16" barbed** configuration. Each valve is precision-manufactured and undergoes **100% leak-decay testing** in our controlled production environment to ensure consistent sealing and long-term durability.

---

### Customizable Body Materials

Select the ideal resin to meet your application's performance and compatibility needs:

- **Kynar® (PVDF)**
- **Nylon** (*glass-filled grade available*)
- **Acetal Celcon® M90**
- **Polycarbonate**
- **Polypropylene**

### Diaphragm Options

Optimize chemical resistance, flexibility, and functional performance with a wide range of diaphragm materials:

- **EPDM**
- **Viton®**
- **Fluorosilicone**
- **Kalrez®**
- **Silicone USP Class VI**
- **FDA-grade Viton®**

### Tailored Engineering

For unique or demanding applications, we offer **custom molding** and fully configurable resin/diaphragm combinations. Our engineering team collaborates with you to develop precision-matched solutions that meet specific performance, regulatory, or environmental requirements.

### Built for Critical Environments

Designed for purity, performance, and customization, the MPV-3B Series delivers exceptional quality and reliability for medical, laboratory,

industrial, and high-purity systems.

[Flow and Crack Pressure Chart - Standard Flow](#)

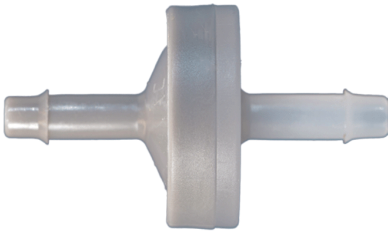
---

**Need more information or looking to tailor one of our valves for a specific application?**

**Complete the form below and our team will promptly connect with you to discuss your requirements and ensure you get the right solution.**

[Contact Form](#)

## MPV 2B SERIES



Engineered for reliability and performance, the MPV-2B Series delivers consistent flow control in a compact 1/8" barbed design. Each valve is precision-built and undergoes **100% leak-decay testing** in our controlled production environment to ensure dependable sealing and long-term durability.

---

**Customizable Body Materials:** Choose the ideal resin for your application requirements:

- **Kynar® (PVDF)**
- **Nylon** (*glass-filled grade available*)
- **Acetal Celcon® M90**
- **Polycarbonate**
- **Polypropylene**

**Diaphragm Options** Optimize chemical compatibility, flexibility, and performance with a wide range of diaphragm materials:

- **EPDM**
- **Viton®**
- **Fluorosilicone**
- **Kalrez®**
- **Silicone USP Class VI**
- **FDA-grade Viton®**

### Tailored Engineering

For specialized applications, we offer **custom molding** and fully customizable resin/diaphragm combinations. Our engineering team partners with you to develop precision-matched solutions that meet unique performance, regulatory, or environmental requirements.

### Built for Critical Environments

Designed for purity, performance, and configurability, the MPV-2B Series provides exceptional quality and reliability for demanding

applications across medical, laboratory, industrial, and high-purity systems.

[Flow and Crack Pressure Chart- Standard Flow](#)

**Need more information or looking to tailor one of our valves for a specific application? Complete the form below and our team will promptly connect with you to discuss your requirements and ensure you get the right solution.**

[Contact Form](#)

## GEN1-FLL



**Built for precision and versatility, the Gen1-FLL series is a dedicated female luer lock fitting that simplifies fluid connection workflows.** Each fitting includes a secure barbed end for reliable tubing engagement and comes in a wide selection of sizes and materials to meet the demands of your specific application.

Perfect for medical, lab, and industrial settings, the Gen1-FLL ensures tight, leak-resistant seals—even in low-pressure systems—and maintains full compatibility with standard male luer components. Its universal luer lock geometry integrates effortlessly into existing setups and equipment.

Need a male counterpart? [Gen1-MLL](#) fittings are sold separately and can be paired as needed for complete system connectivity.

- Standalone female luer lock fitting
- Available in multiple sizes & materials
- Optimized for fluid transfer, sampling & low-pressure systems

SKU	Description	Material Options
Gen1-1B-FLL	1/16 Barbed Female Luer Lock	Acetal Kynar ® Nylon Polycarbonate Polypropylene
Gen1-2B-FLL	1/8 Barbed Female Luer Lock	Acetal Kynar ® Nylon Polycarbonate Polypropylene

SKU	Description	Material Options
Gen1-3B-FLL	3/16 Barbed Female Luer Lock	Acetal Kynar ® Nylon Polycarbonate Polypropylene

## CE-14PG-2B SERIES



Designed for secure and leak-resistant connections, this **1/4-inch compression elbow** seamlessly transitions to a **1/8-inch barb**, ensuring reliable fluid transfer in critical applications. The **threaded design** enhances stability, making it an ideal choice for laboratory, medical, and industrial systems requiring precise and durable fittings.

## 91557 SERIES



This versatile pickup tube features a **1/4-inch compression fitting** to a **1/8-inch barb** and comes equipped with a **strainer** for optimal filtration. Designed for use in **fluidic transfers**, this tube is suitable for both **laboratory and medical applications**. Available in sizes up to **13 inches long**, with **shorter options**, it can be made with or without a cap, ensuring compatibility with various systems.

## BHUC SERIES



BHUC is a 1/2 Barbed bulkhead with an 11/16-24 Thread for the panel mount. 18 MM hole for the mounting through hole. Molded in several materials: Acetal, PVDF, and Polypropylene. Rated at 50 PSI. This bulkhead comes with a nickel-plated nut or with an Acetal nut.

SKU	Description	Materials
BHUC-8B	1/2 inch Barb Bulkhead	Nylon Acetal Polypropylene Kynar®



## MPV-L SERIES | MEDICAL GRADE LUER CHECK VALVES

Engineered for **critical medical and laboratory applications**, our **MPV Luer Series Medical Grade Plastic Check Valves** are **manufactured, assembled, and rigorously tested at 15 PSI in a certified Class 7 Cleanroom environment**, ensuring unmatched contamination control and reliability.

**Ultra-Pure, High-Performance Materials** Crafted from premium **Polypropylene, Polycarbonate, Radiation-Stable Polycarbonate, and Kynar® 720**, our check valves deliver **exceptional chemical resistance and durability** for demanding medical, pharmaceutical, and laboratory environments.

**Precision-Designed for Sterile Applications** Pre-packaged and produced under strict cleanroom conditions, these valves provide **consistent performance where purity matters most.**

### 4 Main Connector Options:

- Male Inlet Luer with Rotating Collar to Female Luer
- Male Inlet Rotating Collar to Male Rotating Collar
- Female Inlet Luer Lock to Female Luer Lock
- Female Inlet Luer Lock to Male Slip

Barb to \*\*\*

**Diaphragm Options:** Silicone

**Flow Direction:** Inlet to Outlet

\*\*\*Custom Options: These Luers can be manufactured to fit with any of our Barb Connectors on the opposing end.

Barb Size options: 1/8 inch, 3/16 inch, 1/4 inch, 5/16 inch, 3/8 inch

SKU	Luers	Body Material	Diaphragm
MPV-FLL-BODY-DIAPHRAGM	IN: Female Luer OUT: Female Luer	Polycarbonate Polypropylene Kynar®	Silicone USP Class VI
MPV-MLLR-BODY-DIAPHRAGM	IN: Male Luer OUT: Male Luer w/Rotating Collar	Polycarbonate Polypropylene Kynar®	Silicone USP Class VI
MPV-FLL-MLLR-BODY-DIAPHRAGM	IN: Female Luer OUT: Male Luer w/ Rotating Collar	Polycarbonate Polypropylene Kynar®	Silicone USP Class VI
MPV-MLLR-FLL-BODY-DIAPHRAGM	IN: Male Luer Out: Female Luer	Polycarbonate Polypropylene Kynar®	Silicone USP Class VI

**Cleanroom Class 8 Production & Manufacturing Available**



## PSSV SERIES

Precision-crafted in a **Class 7 Cleanroom**, our **PSSV Series Self-Sealing Check Valves** provide superior **back-flow prevention** for **critical air and fluid applications**. Designed for **medical, respiratory, ventilator, and bio-pharmaceutical** environments, these valves ensure **high-purity performance and contamination control**.

### ✓ Reliable Back-Flow Prevention

- Innovative **retractable silicone disk** for secure sealing
- Designed for pressures **under 50 PSI**, ensuring dependable flow control

### ✓ High-Quality Materials for Medical-Grade Durability: Polycarbonate & Polypropylene housings

Additional material options: **Radiation-Stable Polycarbonate & PVDF**

### ✓ Versatile Sterilization Compatibility:

- **Gamma Sterilization (6 Mrads)**
- **ETO Sterilization** for medical-grade cleanliness

### ✓ Customizable Designs for Your Unique Needs:

- **Barbed connectors:** Available for **3/16" ID tubing and 5/16" ID tubing**
- Optional **EPDM sealing material** with qualifying volumes
- **Expanded connection options:** Male & Female **Luer** fittings and **Bond-in connections** tailored to volume requirements

Engineered for **precision, purity, and flexibility**, the **PSSV Series** is the trusted solution for demanding medical and fluid-handling applications.

- Open pressure is approximately .20 PSI
- Flow is 56.29 l/h
- Crack Pressure is .001 PSI

[View our Flyer Here](#)

SKU	Description	Diaphragm
PSSV-3B-PP	3/16 inch by 3/16 inch Polypropylene Barbed Self-Sealing Check Valve	Silicone EPDM
PSSV-3B-PC	3/16 inch by 3/16 inch Polycarbonate Barbed Self-Sealing Check Valve	Silicone EPDM
PSSV-5B-PP	5/16 inch by 5/16 inch Polypropylene Barbed Self-Sealing Check Valve	Silicone EPDM
PSSV-5B-PC	5/16 inch by 5/16 inch Polycarbonate Barbed Self-Sealing Check Valve	Silicone EPDM
PSSV-5B3B-PP	5/16 inch by 3/16 inch Polypropylene Barbed Self-Sealing Check Valve	Silicone EPDM
PSSV-5B3B-PC	5/16 inch by 3/16 inch Polycarbonate Barbed Self-Sealing Check Valve	Silicone EPDM



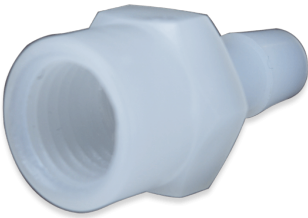
## C-342-6 SERIES | STRAINER

**Introducing the C-342-6 Series Pickup Strainer**—your ultimate solution for preventing debris from flowing upward in tube lines, ensuring a clean and efficient system. Engineered for reliability and versatility, this strainer is available in **Polypropylene, Nylon, and Acetal** materials to suit a range of applications.

Designed to fit seamlessly into various setups, the **multi-barbed hose sizes** come in **1/8, 3/16, 1/4, 5/16, and 3/8 inches**, offering a secure and leak-free connection. The integrated **polyester strainers**, available in a broad range of **65 to 1000 microns**, provide superior filtration, safeguarding your system against unwanted particles.

Upgrade your filtration system with the **C-342-6 Series**, where durability meets precision. [Request a quote today and experience enhanced performance firsthand!](#)

## 4F4B SERIES | PLASTIC CONNECTOR



**The 4F4B Series FNPT to 1/4" Barbed Plastic Connector**—a precision-engineered solution designed for secure, leak-free connections in fluid transfer applications. This versatile connector features **FNPT threading**, ensuring a reliable, tight fit, while the **1/4-inch barbed end** offers compatibility with a range of tubing sizes.

Manufactured from high-quality **Kynar (PVDF) and HDPE** materials, the 4F4B Series delivers exceptional durability and resistance to chemicals, abrasion, and environmental stress. **Kynar** provides superior strength and thermal stability, making it ideal for high-demand applications, while **HDPE** offers lightweight resilience with excellent corrosion resistance.

Whether used in industrial, medical, or laboratory settings, the **4F4B Series** ensures optimal flow control and secure fluid conveyance. **Upgrade your system today with the reliability and performance of this premium plastic connector!**

---

## GEN1 SERIES BARBED FITTINGS



GEN1 Series, manufactured by Pneuline, are single-barbed plastic fittings without a parting line on the barb.

[Click Here](#) to View Material Options.

### **Choosing the Right Material for Your Application**

- **Black Nylon** - Built to withstand the sun! With UV resistance, it's perfect for outdoor use.
- **Glass-Filled Nylon** - Stronger and liquid-resistant, ideal for water-heavy environments and rugged motor vehicles like motorcycles, boats, and cars.
- **PVDF, Polypropylene & Polycarbonate** - These **Class 6 USP** materials meet the highest standards for medical and bio-pharmaceutical applications and are completely bovine-free.
- **Acetal** - Certified for **NSF 51/61** standards, making it a trusted choice for potable water and food-related applications.

Regardless of the industry, we offer materials designed for durability, compliance, and optimal performance.

### **Available Connection Types:**

- ✓ **Tees** - Branch flow in two directions.

- ✓ **Elbows** – Redirect flow at an angle.
- ✓ **Straight Connections** – Maintain direct, linear flow.
- ✓ **F Style Port Connections** – Multi-barb ports for complex routing.
- ✓ **E Style Port Connections** – Multi-barb ports for modular setups.

*Our products can be manufactured in **Class 7 cleanroom environment**, ensuring the highest levels of cleanliness and contamination control.*

**GEN1 Series** offers barbed fittings in a range of sizes—**1/16", 1/8", 3/16", 1/4", and 3/8"**

[View our Flyer Here](#)

SKU	Description	Material Options
GEN1-T-1B	1/16 inch Single Barb Tee	Glass-Filled Nylon (Black Available) Nylon (Black Available) Kynar® (Gray Available) Polypropylene
Gen1-T-2B	1/8 inch Single Barb Tee	Glass-Filled Nylon (Black Available) Nylon (Black Available) Kynar® (Gray Available) Polypropylene"
Gen1-T-3B	3/16 Single Barb Tee	Glass-Filled Nylon (Black Available) Nylon (Black Available) Kynar® (Gray Available) Polypropylene
GEN1-T-4B	1/4 inch Single Barb Tee	Glass-Filled Nylon (Black Available) Nylon (Black Available) Kynar® (Gray Available) Polypropylene
GEN1-T-6B	3/8 inch Single Barb Tee	Glass-Filled Nylon (Black Available) Nylon (Black Available) Kynar® (Gray Available) Polypropylene
Gen1-L-1B	1/16 inch Barbed Elbow	Glass-Filled Nylon (Black Available) Nylon (Black Available) Kynar® (Gray Available) Polypropylene
Gen1-L-2B	1/8 Inch Barbed Elbow	Glass-Filled Nylon (Black Available) Nylon (Black Available) Kynar® (Gray Available) Polypropylene
GEN1-L-3B	3/16 inch Single Barb Elbow	Glass-Filled Nylon (Black Available) Nylon (Black Available) Kynar® (Gray Available) Polypropylene

SKU	Description	Material Options
GEN1-L-4B	1/4 inch Single Barb Elbow	Glass-Filled Nylon (Black Available) Nylon (Black Available) Kynar® (Gray Available) Polypropylene
GEN1-L-6B	3/8 inch Single Barb Elbow	Glass-Filled Nylon (Black Available) Nylon (Black Available) Kynar® (Gray Available) Polypropylene
Gen1-S-1B	1/16 Inch Single Barb Straight	Glass-Filled Nylon (Black Available) Nylon (Black Available) Kynar® (Gray Available) Polypropylene
Gen1-S-2B	1/8 inch Single Barb Straight	Glass-Filled Nylon (Black Available) Nylon (Black Available) Kynar® (Gray Available) Polypropylene
GEN1-S-3B	3/16 inch Single Barb Straight	Glass-Filled Nylon (Black Available) Nylon (Black Available) Kynar® (Gray Available) Polypropylene
GEN1-S-4B	1/4 inch Single Barb Straight	Glass-Filled Nylon (Black Available) Nylon (Black Available) Kynar® (Gray Available) Polypropylene
GEN1-S-6B	3/8 inch Single Barb Straight	Glass-Filled Nylon (Black Available) Nylon (Black Available) Kynar® (Gray Available) Polypropylene
GEN1-F-2B	1/8 inch Multi Port F Style	Glass-Filled Nylon (Black Available) Nylon (Black Available) Kynar® (Gray Available) Polypropylene
GEN1-MAN-2B	1/8 inch Multi Port E Manifold Style	Glass-Filled Nylon (Black Available) Nylon (Black Available) Kynar® (Gray Available) Polypropylene

## LD SERIES | LAB DISCONNECTS



*Pneuline Supply, Inc.* manufactures these low-pressure Lab Disconnects made from either Polyethylene or Polypropylene which are used in laboratories for vacuum applications, low-pressure lines, water lines, and inert gases. They connect various tubing sizes from 1/8 inch, 7/32 inch, 1/4 inch, and .170 ID tube lines. They can be purchased with a Viton® or EPDM disc Check Valve, or with a porous Polyethylene filter. A unique pick-up tube line assembly for use in drawing air or water from containers is also available.

SKU	Description
LD-F-LDPE	Female LDPE Lab Disconnect
LD-F-PP	Female Polypropylene Lab Disconnect
LD-LDPE	Male/Female LDPE Complete Lab Disconnect
LD-M-LDPE	Male LDPE Lab Disconnect
LD-M-NB-PP	Male No-Barb Polypropylene Lab Disconnect

## WPF SERIES | PLASTIC INLINE FILTERS



Manufactured by **Pneuline Supply**, the **WPF Series Filters** are tailored to meet **custom specifications per customer requirements**, ensuring optimal filtration for laboratory, medical, and industrial applications.

### Versatile Connector Choices for Seamless Integration

The WPF Series Filters come equipped with **barbed connectors**, available in multiple configurations:

- **1/8, 3/16, 1/4, 5/16, and 3/8-inch barbs**
- **Male and Female Luer fittings**, designed to mix and match seamlessly with **barbed connectors or opposing luer fittings**
- **ISO 594-compatible luer connections**, ensuring universal compatibility across various fluid transfer applications

### Durable Filter Housings for Long-Lasting Performance

To accommodate diverse environmental and chemical resistance needs, our filter housings are available in **high-performance materials**, including:

- **Polypropylene** - Chemical-resistant and lightweight
- **Polycarbonate** - Transparent for easy inspection
- **Nylon** - Durable and abrasion-resistant
- **Acetal** - High mechanical strength and dimensional stability

- **PVDF** - Excellent chemical and thermal resistance

### **Superior Filtration Options—Tailored to Your Needs**

Operating at **50 PSI**, the WPF Series incorporates a **flat filter welded into the housing**, available in a variety of materials and micron ratings:

#### **Fabric Filters (Polyester & Polypropylene)**

Offering **optional PTFE or PVDF upgrades**, these filters ensure highly efficient particle retention with sizes ranging from:

- **5, 10, 20, 44, 64, 75, 105, 150, 177, 200, and 250 microns**

#### **Porous High-Density Polyethylene Filters**

With a **hydrophobic nature**, these filters effectively **block most fluids**, ensuring optimal separation. Available sizes include:

- **15-45 microns**
- **45-90 microns**
- **90-160 microns**

#### **Stainless Steel Filters—For Maximum Durability**

Available in **304 and 316L stainless steel**, offering superior filtration strength and longevity.

- **304 Stainless Steel:**
- **61 microns (250 mesh)**
- **74 microns (200 mesh)**
- **103 microns (150 mesh)**
- **149 microns (100 mesh)**

#### **316L Stainless Steel:**

- **44 microns**

Optimize your filtration system with **Pneuline Supply's WPF Series Filters—engineered for efficiency, built for excellence. Contact us today to customize your order and elevate your fluid control solutions!**

[View Product Flyer](#)

---

SKU	Description	Body Material Option	Filter Size and Material
			150 Micron Kynar
			75 Micron Nylon
			150 Micron Polypropylene
			177 Micron Polypropylene
			5 Micron Polyester (MediFab Available)
			10 Micron Polyester
			20 Micron Polyester
			30 Micron Polyester
			65 Micron Polyester
			73 Micron Polyester
			105 Micron Polyester
			130 Micron Polyester
		Acetal (Black Available)	Polyester
			150 Micron Polyester
	1/8" Barbed Plastic Filter (BODY)	Nylon (Black Available)	180 Micron Polyester
WPF-2B-(BODY)-(FILTER)	(FILTER)	Polypropylene	Polyester
		Kynar®	250 Micron Polyester
		Polycarbonate	1000 Micron Polyester
			55 Micron Stainless Steel
			61 Micron Stainless Steel
			74 Micron Stainless Steel
			103 Micron Stainless Steel
			149 Micron Stainless Steel
			150 Micron Stainless Steel
			250 Micron Stainless Steel

SKU	Description	Body Material Option	Filter Size and Material
			150 Micron Kynar
			75 Micron Nylon
			150 Micron Polypropylene
			177 Micron Polypropylene
			5 Micron Polyester (MediFab Available)
			10 Micron Polyester
			20 Micron Polyester
			30 Micron Polyester
			65 Micron Polyester
			73 Micron Polyester
			105 Micron Polyester
			130 Micron Polyester
		Acetal (Black Available)	Polyester
		Nylon (Black Available)	150 Micron Polyester
WPF-3B-(BODY)-(FILTER)	3/16" Barbed Plastic Filter (BODY) (FILTER)	Polypropylene	180 Micron Polyester
		Kynar®	250 Micron Polyester
		Polycarbonate	1000 Micron Polyester
			55 Micron Stainless Steel
			61 Micron Stainless Steel
			74 Micron Stainless Steel
			103 Micron Stainless Steel
			149 Micron Stainless Steel
			150 Micron Stainless Steel
			250 Micron Stainless Steel

SKU	Description	Body Material Option	Filter Size and Material
			150 Micron Kynar
			75 Micron Nylon
			150 Micron Polypropylene
			177 Micron Polypropylene
			5 Micron Polyester (MediFab Available)
			10 Micron Polyester
			20 Micron Polyester
			30 Micron Polyester
			65 Micron Polyester
			73 Micron Polyester
			105 Micron Polyester
			130 Micron Polyester
		Acetal (Black Available)	Polyester
		Nylon (Black Available)	150 Micron Polyester
WPF-4B-(BODY)-(FILTER)	1/4" Barbed Plastic Filter (BODY) (FILTER)	Polypropylene	180 Micron Polyester
		Kynar®	250 Micron Polyester
		Polycarbonate	1000 Micron Polyester
			55 Micron Stainless Steel
			61 Micron Stainless Steel
			74 Micron Stainless Steel
			103 Micron Stainless Steel
			149 Micron Stainless Steel
			150 Micron Stainless Steel
			250 Micron Stainless Steel

SKU	Description	Body Material Option	Filter Size and Material
			150 Micron Kynar
			75 Micron Nylon
			150 Micron Polypropylene
			177 Micron Polypropylene
			5 Micron Polyester (MediFab Available)
			10 Micron Polyester
			20 Micron Polyester
			30 Micron Polyester
			65 Micron Polyester
			73 Micron Polyester
			105 Micron Polyester
			130 Micron Polyester
		Acetal (Black Available)	Polyester
		Nylon (Black Available)	150 Micron Polyester
WPF-5B-(BODY)-(FILTER)	5/16" Barbed Plastic Filter (BODY) (FILTER)	Polypropylene	180 Micron Polyester
		Kynar®	250 Micron Polyester
		Polycarbonate	Polyester
			1000 Micron Polyester
			55 Micron Stainless Steel
			61 Micron Stainless Steel
			74 Micron Stainless Steel
			103 Micron Stainless Steel
			149 Micron Stainless Steel
			150 Micron Stainless Steel
			250 Micron Stainless Steel

## BHUCD SERIES



The **BHUCD Series Bulkheads are Manufactured by *Pneuline Supply, Inc.*** in-house and offer a unique flat side for a Greenlee D punch, thus avoiding the possibility for the Bulkhead to turn. Bulkheads are assigned sizes from the outside of the panel to the inside. Available in 1/8 inch, 1/4 inch, and 3/8 inch Hose Barb sizes, or any combination. The 3/8 inch panel fitting does not have a flattened side. Also, the materials available are Natural Nylon, Black Nylon, Polypropylene, PVDF, and Acetal. Zinc-plated nuts are available for Nylon bulkheads, and Nylon nuts are available for all other bulkheads.

SKU	Description	Materials
BHUCD-2B2B	1/8 inch Barb by 1/8 inch Barb Bulkhead	Nylon (Natural or Black) Glass-Filled Nylon (Natural or Black) Polypropylene Kynar®
BHUCD-2B4B	1/8 inch Barb by 1/4 inch Barb Bulkhead	Nylon (Natural or Black) Glass-Filled Nylon (Natural or Black) Polypropylene Kynar®
BHUCD-4B4B	1/4 inch by 1/4 inch Bulkhead	Nylon (Natural or Black) Glass-Filled Nylon (Natural or Black) Polypropylene Kynar®
BHUCD-4B6B	1/4 inch Barb by 3/8 inch Barb Bulkhead	Nylon (Natural or Black) Glass-Filled Nylon (Natural or Black) Polypropylene Kynar®
<b>BHUCD-6B6B</b>	<b>3/8 inch Barb by 3/8 inch Barb Bulkhead</b>	<b>Nylon (Natural or Black)</b> <b>Glass-Filled Nylon (Natural or Black)</b> <b>Polypropylene</b> <b>Kynar®</b>