



CHECK VALVES

CHECK VALVES

Pneuline offers a wide variety of check valves in multiple sizes, materials, and flow rates. Browse Products now and find the perfect fit for your application needs.



METAL CHECK VALVES

METAL CHECK VALVES

Metal inline valves of brass, aluminum, and stainless steel are provided in ball check, piston, and poppet styles. These valves are used in agricultural, food, beverage water, and medical applications. Most products are made with varying thread designs.



BALL CHECK VALVES

BALL CHECK VALVES

Ball Check Valves can be utilized in many applications. They are used for preventing backflow in a pipeline system.

BLC SERIES



SKU	Description
BLC-1032-10	10-32 Female 10 psi Brass Check Valve
BLC-18-14-B-15	1/4 inch Male to Male Brass Check Valve 15 psi
BLC-18-18M18F-SS	1/8 inch Male to Female Stainless Steel Check Valve
BLC-18-B-2	1/8 inch Male to Male Brass 2 psi Check Valve
BLC-18F18M-B	1/8 inch Female to 1/8 inch Male Brass Check Valve
BLC-18M18F-SS-10	1/8 inch Male to Female 303 Stainless Steel 10 psi Check Valve

SBCV 2500 SERIES



Brass Ball check valves

Rated at 2500 PSI

Sizes and flow direction

1/4 MNPT by 1/4 MNPT

1/4 MNPT by 1/4 FNPT,

1/4 Male Flare by 1/4 Male Flare. Brass ball checks have 3 selections of seals, Buna, EPDM, or Viton,

Cracking pressure 1-5 PSI or over 5 PSI or No spring

303 Stainless Steel Ball Check Valve

1/4 MNPT by 1/4 MNPT

Product ID	Inlet	Outlet	Spring	Seal
SBVC-4M4M-1-B	1/4 MNPT	1/4 MNPT	1-5 PSI Crack Pressure	Buna

SBCV 2000 SERIES



Ball check valves are available in brass maximum operating pressure of 2000 PSI. 1/2 MNPT or 3/4 FNPT. 1/2 MNPT has seals of Buna/FKM/EPDM, and FKM only for 3/4 valves. Electroless nickel plating is available. Overall cracking pressure is between 1-5 PSI standard. 1/2 Male unit offered in less than 1, or more than 5 PSI. Both units are available without springs.

Par Number	Description	Seals	Opening pressure	Material
SPCV2000 8M8M-V-5	1/2 MNPT by 1/2 MNPT	Viton FKM	Over 5 PSI	Brass
SPCV2000 8M8M-E-1-NP	1/2 MNPT by 1/2 MNPT	EPDM	Less than 1 PSI	Brass Electroless Nickel plate
SPCV2000 8M8M-B-NS	1/2 MNPT by 1/2 MNPT	Buna	N/A	Brass
SPCV2000-12M12M-V-1 to 5	3/4 FNPT by 3/4 FNPT	Viton FKM	Opening between 1 to 5 PSI	Brass

EVCK SERIES- BALL CHECK VALVE



Our EVCK Series Anti-Siphon Ball Check Valves for gasoline applications. These Brass valves are available 1/4 NPTF by 1/4, 5/16 or 3/8 Barb, 1/4 NPTF by 1/4 or 3/8,

45 % Male Flare, 1/4 NPTF by 1/4 NPTF and 1/4 NPTF by 1/4 NPTF Female. These 1/4 valves offer a 30 GPH flow at -1.5 PSI

The 3/8 NPTF threads offer a flow of 50 GPH at -1.5 PSI. The sizes are 3/8 Male NPTF by 3/8, 1/2 or 5/8 Hose Barb. 3/8 Male NPTF by 3/8 Male Flare 45%, 3/8 NPTF both ends, and a 3/8 Male NPTF by 3/8 NPTF Female threads.

1/2 Inch connections offer a 75 GPH Flow Rate at -1.5 PSI. Sizes are 1/2 Male NPTF by 3/8 or 1/2 Hose Barb or 1/2 Male NPTF both ends that is available only in brass.

Available in Brass or Aluminium (except Flare fittings) with 300 Stainless Steel ball seats, ball and springs.

SKU	Description
EVCK-4M	1/4 inch Male by 1/4 inch Male Ball Check Valve
EVCK-4M4B-B	1/4 inch Male by 1/4 inch Barb Ball Check Valve
EVCK-4M4B-AL	1/4 Inch Male by 1/4 inch Barb Ball Check Valve Aluminum
EVCK-4M5B	1/4 inch Male by 5/16 inch Barb Ball Check Valve
EVCK-4M6B	1/4 inch Male by 3/8 inch Barb Ball Check Valve
EVCK-4M4F	1/4 inch Male by 1/4 inch Female Ball Check Valve
EVCK-6M	3/8 inch Male by 3/8 inch Male Ball Check Valve
EVCK-6M6B	3/8 inch Male by 3/8 inch Barb Ball Check Valve
EVCK-6M8B	3/8 inch Male by 1/2 inch Barb Ball Check Valve
EVCK-6M10B	3/8 inch Male by 5/8 inch Barb Ball Check Valve
EVCK-6M6F	3/8 inch Male by 3/8 inch Female Ball Check Valve
EVCK-8M	1/2 inch Male by 1/2 inch Male Ball Check Valve (brass only)
EVCK-8M6B-AL	1/2 inch Male by 3/8 inch Barb Ball Check Valve (aluminum only)
EVCK-8M8B	1/2 inch Male by 1/2 inch Barb Ball Check Valve (Brass Only)



CMCV SERIES

The CMCV Series Brass Ball Check Valves are compression fittings. This series has Tube OD of 1/8 inch, 1/4 inch, and 3/8 inch. Male NPT thread sizes of 1/8 inch and 1/4 inch are available. In addition, the working pressure for the 1/8 inch tube OD is 400 psi, for the 1/4 inch it is 300 psi, and for the 3/8 inch, it is 200 psi. Furthermore, the temperature range is -65° F to 250° F at maximum operating pressures.

SKU	Description
CMCV-14C2M	1/4 inch by 1/8 inch NPT 3 psi Brass Compression Check Valve
CMCV-18C2M	1/8 inch Brass 3 psi by 1/8 inch NPT Brass Compression Check Valve
CMCV-2M14C	1/8 inch NPT by 1/4 inch Brass S 3 psi Brass Compression Check Valve
CMCV-2M18C	1/8 inch NPT by 1/8 inch Brass 3 psi Brass Compression Check Valve
CMCV-38C4M	3/8 inch Brass 3 psi by 1/4 inch NPT Brass Compression Check Valve
CMCV-4M38C	1/4 inch NPT by 3/8 inch Brass 3 psi Brass Compression Check Valve



METAL PISTON CHECK VALVES

METAL PISTON CHECK VALVES

Pneuline offers Metal Piston Check Valves perfect for Industrial applications, Power plants, and High-temperature services. Metal Piston Check Valves are Gravitational closure and quick closing.

CLCV SERIES - BRASS CHECK VALVES



The CLCV Series Brass Check Valves have 10-32 inch ports, a Nitrile seal, and a Stainless Steel spring. It permits flow in only one direction and is used for air and hydraulics. The input psi is 300 maximum. The crack pressure is 1/2 psi and the temperature range is 32° F to 230° F. The 1/8-inch valve has a maximum input pressure of 1000 psi. Otherwise, all other attributes are the same as the 10-32 inch valve.

SKU	Description
CLCV-10F10F	January 6, 1900
CLCV-10F10M	10-32 Female to Male Brass Poppet Check Valve
CLCV-10M10M	10-32 Male to Male Brass Poppet Check Valve
CLCV-10M10F	10-32 Male to Female Brass Poppet Check Valve
CLCV-18F	1/8 inch Female to Female Brass Poppet Check Valve

BCV SERIES - BRASS CHECK VALVES



The BCV Series Brass Check Valve has inlet and outlet sizes of 1/4 inch and 3/8 inch Male and Female NPT threads, and 1/4 inch Male Flare. This Check Valve has no elastomer to create a seal. It will have a positive seal only at high back pressure, so some leakage may be past the seat in low-pressure applications. The cracking pressure on the 302 Stainless Steel spring is 1 psi (standard), 3.7, 5, 10, 14 and 18 psi. Maximum operating pressure is 2500 psi and the maximum operating temperature is 180° F.

The **490** Series seal options are Buna-N, EPDM, and Viton®. The cracking pressure on the 302 Stainless Steel spring is 1/2 psi, 1 (standard), 3, 6, 10, 30, 40, 55 and 70 psi. The maximum operating pressure is 3000 psi and the maximum operating temperature is 180° F. These Check Valves are designed for high press applications.

SKU	Description
BCV-14F	1/4 inch FNPT by 1/4 inch FNPT Ball Check Valve
BCV-14FM	1/4 inch FNPT by 1/4 inch MNPT Ball Check Valve
BCV-14M	1/4 inch MNPT by 1/4 inch MNPT Ball Check Valve
BCV-14MF	1/4 inch MNPT by 1/4 inch FNPT Ball Check Valve
BCV-38F	3/8 inch FNPT by 3/8 inch FNPT Ball Check Valve
BCV-38M	3/8 inch MNPT by 3/8 inch MNPT Ball Check Valve



BPCV SERIES

The BPCV Series Brass Piston Check Valves are available in inlet and outlet sizes of 1/4 inch, 1/8 inch, and 3/16 inch barbs. Seal options are Buna-N, EPDM and Viton®. Spring materials are Hastelloy and Stainless Steel but the valve is also available without a spring. The maximum operating pressure is 125 psi. The flow rate is 2.5 SCFM at 50 psi.

SKU	Description
BPCV-2	1/8 inch Barb Brass Piston Check Valve
BPCV-2B-E1	1/8 inch Barb EPDM Piston Check Valve 1 psi
BPCV-5	5/16 Barb Piston Check Valve



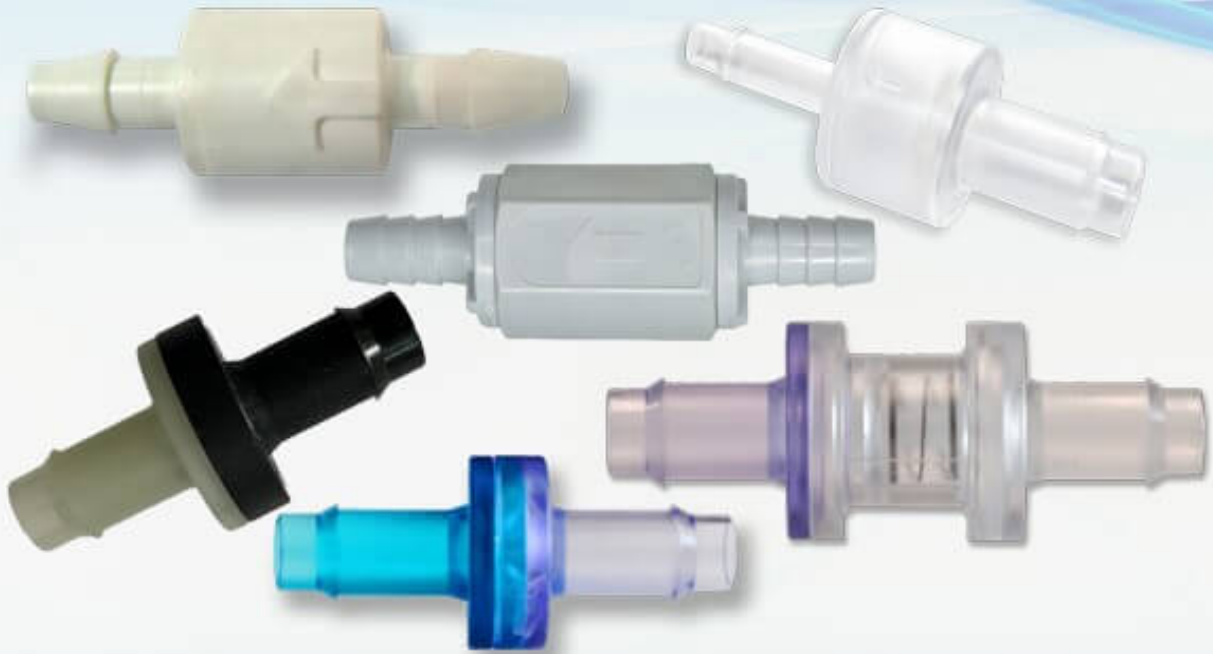
PSCV SERIES

The PSCV Series Brass or Stainless Steel Piston Check Valves ensures a positive bubble-tight seal. They have a cracking pressure of 1 psi, a maximum pressure of 500 psi, and a maximum working temperature of 250° F. The standard unit is Brass with a 302 Stainless Steel spring and Steel retainer. Optional springs of 3, 5, 9, 15, 20, 25 psi. Also available in a 316 Stainless Steel body (shown) with a Hastelloy® spring. 1, 3, 15, and 25 psi. Seals available are Buna, EPDM, or FKM.

SKU	Description
PSCV-12F	1/2 FNPT Brass Piston Check Valve with Buna Seal
PSCV-14F	1/4 FNPT Brass Piston Check Valve with Buna Seal
PSCV-14FM	1/4 FNPT 1/4 MNPT Brass Piston Check Valve
PSCV-14M	1/4 MNPT Brass Piston Check Valve
PSCV-18F	1/8 FNPT Brass Piston Check Valve
PSCV-18FM	1/8 FNPT 1/8 MNPT Brass Piston Check Valve
PSCV-18M	1/8 MNPT Brass Piston Check Valve
PSCV-34F	3/4 FNPT Brass Piston Check Valve
PSCV-38F	3/8 FNPT Brass Piston Check Valve
PSCV-38FM	3/8 FNPT 3/8 MNPT Brass Piston Check Valve



SKU	Description
PSCV-18F-SS	1/8 FNPT 316 Stainless Steel Piston Check Valve
PSCV-18FM-SS	1/8 FNPT 1/8 MNPT 316 Stainless Steel Piston Check Valve
PSCV-34F-SS	3/4 FNPT 316 Stainless Steel Piston Check Valve



PLASTIC CHECK VALVES

PLASTIC CHECK VALVES

Plastic check valves are used for a diverse range of applications. Transportation, chemical, car wash systems, water applications, pools and spas, medical equipment, and biopharmaceutical applications. The types of valves are various for the application. Diaphragm valves, duckbill valves, poppet valves, ball & spring known as ball checks, and Self-closing valves. Inline valves come in a number of thread and barb sizes, and for medical devices requiring luers, ISO 594 and 80369-7 and bond-in tubing sizes.



CARTRIDGE CHECK VALVES

CARTRIDGE CHECK VALVES

A Cartridge Valve is used to allow flow in one direction while stopping oil/ pressure in the opposite direction.



CRV SERIES - CARTRIDGE INSERT VALVES

These Cartridge Insert Valves can be installed into tubing lines or glued into manifolds. The optional housing materials are Nylon, Polypropylene, Acrylic, Acetal, PVDF, and Polycarbonate. Springs are 316 Stainless Steel or Hastelloy® (1/2 psi). O-Rings are of Buna-N, EPDM, FKM, Silicone and Kalrez. Available sizes are 1/4", 5/16", 3/8", 1/2", 5/8" and 3/4" OD. Standard crack pressure for all valves except 3/4" OD is 3" H₂O 0.1 psi, 5 psi, or 1.5 psi.

SKU	DESCRIPTION
CRV-12-11-PPB	1/2" Polypropylene / Buna Seals 11 psi Insert Valve
CRV-14-10PPE	1/4" Polypropylene / EPDM 10 psi Insert Valve
CRV-14-3-PPE	1/4" Polypropylene / EPDM 3 psi Insert Valve
CRV-14-PB-.5	1/4" Polypropylene / Buna .5 psi Insert Valve
CRV-14-PB-1	1/4" Polypropylene / Buna 1 psi Insert Valve
CRV-14-PB-1.5	1/4" Polypropylene / Buna 1.5 psi Insert Valve
CRV-14-PB-2	1/4" Polypropylene / Buna 2 psi Insert Valve
CRV-14-PE-.1	1/4" Polypropylene / EPDM .1 psi Insert Valve
CRV-14-PV-.1	1/4" Polypropylene / FKM .1 psi Insert Valve
CRV-14-PV-.5	1/4" Polypropylene / FKM .5 psi Insert Valve
CRV-14-PV-1	1/4" Polypropylene / FKM 1 psi Insert Valve
CRV-14-PV-10	1/4" Polypropylene / FKM 10 psi Insert Valve
CRV-14-PV-2	1/4" Polypropylene / FKM 2 psi Insert Valve
CRV-14-PV-5	1/4" Polypropylene / FKM 5 psi Insert Valve
CRV-38-2-PPV	3/8" Polypropylene / FKM 2 psi Insert Valve
CRV-38-PB-7.5 WC	3/8" Polypropylene / Buna 7.5 WC Insert Valve
CRV-38-PPB-1	3/8" Polypropylene / Buna 1 psi Insert Valve
CRV4-1/10-NB	1/4" 1/10 Nylon / Buna Insert Valve
CRV4-1/2H-PPV	1/4" 1/2# Hastelloy® Polypropylene / FKM O-Ring Insert Valve
CRV4-10PPE	1/4" 10# Polypropylene / EPDM Insert Valve
CRV4-4PPB	1/4" 4# Polypropylene / Buna Insert Valve
CRV-4-P-V-.5	1/4" Polypropylene / FKM .50 psi Insert Valve
CRV-4-P-V-1	1/4" Polypropylene / FKM 1 psi Insert Valve
CRV-4-PV-6WC	1/4" Polypropylene / FKM 6 inch WC Insert Valve
CRV-4-WP-V-.25	1/4" Polypropylene / FKM .25 psi Insert Valve
CRV-4-WP-V-.5	1/4" Polypropylene / FKM .50 psi Insert Valve
CRV532-14PC	5/32" 14# Polycarbonate Insert Valve
CRV-532-2.5PC	5/32" 2.5# Polycarbonate Insert Valve
CRV-532-2PC	5/32" 2# Polycarbonate Insert Valve
CRV532-4 P	5/32" 4# Polycarbonate Insert Valve





DIAPHRAGM CHECK VALVES

DIAPHRAGM CHECK VALVES

Check Valves: Diaphragm Check Valves
Pneuline 100% Leak Tests all MPV Series Check Valves in-house.



MPV-L SERIES | MEDICAL GRADE LUER CHECK VALVES

Our MPV Luer Series Medical Grade Plastic Check Valves are manufactured, assembled, produced, 15 psi tested, and pre-packaged in a Class 7 Cleanroom environment

Check valves Made of Polypropylene, Polycarbonate, Radiation-Stable Polycarbonate, and Kynar 720®.

4 Main Connector Options: Male Inlet Luer with Rotating Collar to Female Luer, Male Inlet Rotating Collar to Male Rotating Collar, Female Inlet Luer Lock to Female Luer Lock, Female Inlet Luer Lock to Male Slip, Barb to ***

Diaphragm Options: Silicone

Flow Direction: Inlet to Outlet

***Custom Options: These Luers can be manufactured to fit with any of our Barb Connectors on the opposing end.

Barb Size options: 1/8 inch, 3/16 inch, 1/4 inch, 5/16 inch, 3/8 inch

SKU	Description
MPV-FLL-PC-S	IN: Female Luer OUT: Female Luer
MLLR-PC-S	IN: Male Luer OUT: Male Luer w/Rotating Collar
FLL-MLLR-PC-S	IN: Female Luer OUT: Male Luer w/ Rotating Collar
MLLR-FLL-PC-S	IN: Male Luer Out: Female Luer



MPV SERIES | FOOD & BEVERAGE GRADE CHECK VALVES

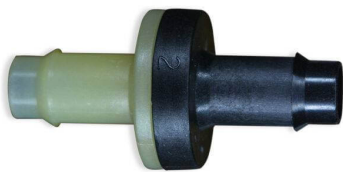
Plastic check valves molded at our facility are made from NSF 51/62 Approved materials, used for food and beverage applications. Our valves do not have grease or oil, like other diaphragm valves on the market. Ideal for contact with Food, Beverage, Water and Laboratory applications. Housings are molded from materials include POM -Celcon, M90® and PVDF, Arkema-Kynar 720®. The diaphragm options are EPDM, Santoprene™, or FDA Viton® disks. Sizes we offer include 1/8, 3/16, 1/4, 5/16, and 3/8 barbed valves.

[Download The Flyer](#)

	Flow (l/h)	Crack Pressure
MPV-2B-AC-FDAViton	1/8 Barbed Acetal with FDA Viton .020	

		Flow (l/h)	Crack Pressure
MPV-2B-AC-S	1/8 Barbed Acetal with Santoprene		
MPV-2B-AC-E	1/8 Barbed Acetal with EPDM	50.79	.007
MPV-3B-AC-FDA Viton	3/16 Barbed Acetal with FDA Viton .020		
MPV-3B-AC-S	3/16 Barbed Acetal with Santoprene		
MPV-3B-AC-E	3/16 Barbed Acetal with EPDM	50.79	.007
MPV-4BH-AC-FDA Viton	1/4 Barbed, Acetal, High Flow with FDA Viton .030		
MPV-4BH-AC-S	1/4 Barbed Acetal,High Flow with Santoprene		
MPV-4BH-AC-E	1/4 Barbed Acetal,High Flow with EPDM	26.28	.001
MPV-5B-AC-FDA Viton	5/16 Barbed, Acetal, High Flow with FDA Viton .030		
MPV-5B-AC-S	5/16 Barbed, Acetal, High Flow with Santoprene .030		
MPV-5B-AC-E	5/16 Barbed, Acetal, High Flow with EPDM .030	26.28	.001
MBV-6B-AC-FDA Viton	3/8 Barbed, Acetal, High Flow with FDA Viton .030		
MBV-6B-AC-S	3/8 Barbed, Acetal, High Flow with Santoprene .030		
MBV-6B-AC-E	3/8 Barbed, Acetal, High Flow with EPDM .030	26.28	.001

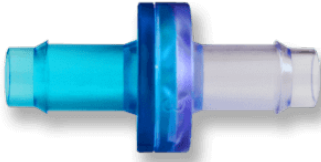
MPV SERIES | AUTOMOTIVE GRADE CHECK VALVES



Pneuline Supply manufactures Plastic Check Valves that are ideal for Automotive applications. Inlets are made of either Natural Nylon or Glass-Filled Natural Nylon. Outlets are made of either Black Nylon or Glass-Filled Black Nylon. The Barbed connectors are available in 1/8 inch, 3/16 inch, and 1/4 inch Standard Flow or 1/4 inch, 5/16 inch, and 3/8 inch High Flow. Diaphragms are made of either Fluorosilicone or EPDM. Customer-specific unique laser part marking is available for identifiers such as Part number sequencing, Lot number, or Company name.

SKU	Description	Flow l/h	Crack Pressure
MPV-2B-NE	1/8 Barb Nylon / EPDM Check Valve	50.79	.007
MPV-2B-NF	1/8 Barb Nylon / Fluorosilicone Check Valve	62.79	.007
MPV-3B-NE	3/16 Barb Nylon / EPDM Check Valve	50.79	.007
MPV-3B-NF	3/16 Barb Nylon / Fluorosilicone Check Valve	62.79	.007
MPV-3B-PE	3/16 Barb Polypropylene / EPDM Check Valve	50.79	.007
MPV-4B-HKE	1/4 Barb Hi-Flow PVDF / EPDM Check Valve	26.28	.001
MPV-4B-NE	1/4 Barb Hi-Flow Nylon / EPDM Check Valve	50.79	.007
MPV-4B-NF	1/4 Barb Nylon / Fluorosilicone Check Valve	62.79	.007
MPV-5B-NE	5/16 Barb Hi-Flow Nylon / EPDM Check Valve	26.28	.001
MPV-5B-NF	5/16 Barb H-Flow Nylon / Fluorosilicone Check Valve	20.57	.001
MPV-5B-R530-E	5/16 Barb High-Flow Glass-Filled Nylon / EPDM Check Valve	26.28	.001
MPV-6B-NE	3/8 Barb High-Flow Nylon / EPDM Check Valve	26.28	.001
MPV-6B-NF	3/8 Barb Hi-Flow Nylon / Fluorosilicone Check Valve	20.57	.001
MPV-6B-R530-E	3/8 Barb High-Flow Glass-Filled Nylon / EPDM Check Valve	26.28	.001

MPV SERIES | MEDICAL GRADE CHECK VALVES



MPV Series Medical Grade Check Valves are manufactured and tested in a Class 7 Cleanroom environment making them ideal for medical applications. All cleanroom check valves are tested in our cleanroom environments at 15 PSI. Resin options include Nylon, Polypropylene, Polycarbonate, Radiation-stable Polycarbonate, and Kynar® 720. Other custom resins are available at the customer's request. Sizes Available: 3/16 inch, 5/16 inch, and 3/8 inch high flow. Diaphragms are made of Silicone USP Class VI or FDA Viton®. Our custom molding options allow for customer specific needs or requirements which include resin options as well as diaphragm options.

[Download the MPV Series Flyer](#)

SKU	Description
MPV-2B-NS	1/8 Barb Nylon / FDA Silicone Check Valve
MPV-2B-PCS	1/8 Barb Polycarbonate / Natural FDA Silicone Check Valve
MPV-3B-PCS	3/16 Barb Polycarbonate / Silicone .020 VI Check Valve
MPV-4B-KS	1/4 Barb Standard PVDF/ Silicone Check Valve
MPV-6B-KS	3/8 Barb PVDF / USP Class VI Silicone Check Valve
MPV-6B-PCRS	3/8 Barb Polycarbonate / Silicone USP class VI Check Valve

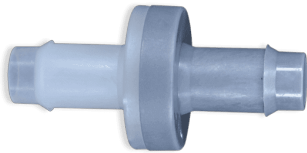
CIS SERIES



This is a non-barbed Check Valve with a white tubing port inlet and clear tubing port outlet. The body is made of Acrylic with a blue Silicone diaphragm. This check valve is pressure-rated at 45 psi. The port sizes are both .130" and will accommodate 1/16" ID soft Silicone tubing as well as other tubing of 1/8" and 3/32" ID. It is manufactured in an ISO Class 8 Cleanroom and is Gamma, E-beam, and EtO sterilizable. This valve is made of Class VI approved materials, it is ultrasonically welded and is 100% inline tested for backflow and weld leaks.

SKU	Description
CIS-6383	Check Valve .130 port Acrylic/Silicone .29CP

MPV SERIES | INDUSTRIAL GRADE CHECK VALVES



MPV Plastic Diaphragm Check Valves are Manufactured by Pneuline Supply. One way valves are used for Ozone, pools, spas, printing, ink jet applications. Wound therapy, air mattresses.

printing and ink jet applications. Vacuum applications.

Our valves are offered in 5 different housing materials and 6 different standard barb configurations.

- **Kynar® 720 PVDF, Acetal, Nylon, Glass-filled Nylon, Polypropylene.**
- **Barbed connectors are available in 1/8 inch, 3/16 inch, and 1/4 inch standard flow or 1/4 inch, 5/16 inch, and 3/8 inch high flow.**
- **Diaphragm selections are Fluorosilicone, EPDM, Viton®, or Kalrez® FFKM**

SKU	Description	Flow (l/h)	Crack Pressure
MPV-2B-KK	1/8 Barb PVDF / Kalrez® Check Valve	43.17	.011
MPV-2B-KV	1/8 Barb PVDF / FKM Check Valve	68.09	.006
MPV-2B-NF	1/8 Barb Nylon / Fluorosilicone Check Valve	62.79	.007
MPV-2B-NV	1/8 Barb Nylon / FKM Check Valve	68.09	.006
MPV-3B-AF	3/16 Barb Acetal / Fluorosilicone Check Valve	62.79	.007
MPV-3B-KV	3/16 Barb PVDF / FKM Check Valve	68.09	.006
MPV-3B-NF	3/16 Barb Nylon / Fluorosilicone Check Valve	62.79	.007
MPV-3B-NV	3/16 Barb Nylon / FKM Check Valve	68.09	.006
MPV-3B-PF	3/16 Barb Polypropylene / Fluorosilicone Check Valve	62.79	.007
MPV-3B-PV	3/16 Barb Polypropylene / FKM Check Valve	68.09	.006
MPV-4B-HKK	1/4 Barb Hi-Flow PVDF / Kalrez Check Valve	10.82	.001
MPV-4B-HKV	1/4 Barb Hi-Flow PVDF / FKM Check Valve	35.75	.001
MPV-4B-HNF	1/4 Barb Hi-Flow Nylon / Fluorosilicone Check Valve	20.57	.001
MPV-4B-HNV	1/4 Barb Hi-Flow PVDF / FKM Check Valve	35.75	.001
MPV-4B-KV	1/4 Barb Standard Flow PVDF / FKM Check Valve	68.09	.006

SKU	Description	Flow (l/h)	Crack Pressure
MPV-4B-NF	1/4 Barb Nylon / Fluorosilicone	62.79	.007
MPV-4B-NV	1/4 Barb Nylon / FKM Check Valve	68.09	.006
MPV-4B-PF	1/4 Barb Polypropylene / Fluorosilicone Check Valve	62.79	.007
MPV-4B-PV	1/4 Barb Polypropylene / FKM Check Valve	68.09	.006
MPV-5B-AF	5/16 Barb Acetal / Fluorosilicone Check Valve	20.57	.001
MPV-5B-KK	5/16 Barb PVDF / Kalrez® Check Valve	10.82	.001
MPV-5B-KV	5/16 Barb PVDF / FKM Check Valve	35.73	.001
MPV-5B-NF	5/16 Barb Nylon / Fluorosilicone Check Valve	20.57	.001
MPV-5B-NV	5/16 Barb Nylon / FKM Check Valve	35.75	.001
MPV-6B-KV	3/8 Barb PVDF /FKM Check Valve	35.75	.001
MPV-6B-NF	3/8 Barb Nylon / Fluorosilicone Check Valve	20.57	.001
MPV-6B-NV	3/8 Barb Nylon / FKM Check Valve	35.75	.001

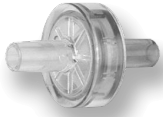
CSP SERIES - POLYETHYLENE CHECK VALVES



The CSP Series Check Valves have a Polyethylene housing with a Neoprene disc for the 1/4-inch size and a Polyethylene disc for the 3/8-inch size. The maximum pressure for these check valves is 20 psi.

SKU	Description
CSP-38	3/8 inch to 9/16 inch ID Polypropylene Check Valve

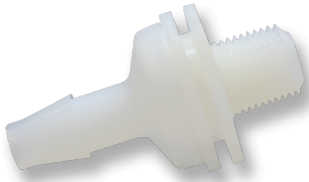
BBCV SERIES



The BBCV Series Check Valve has a Male Slip Luer with 30 psi back pressure and 1/4 psi inlet cracking pressure. This series comes in ABS or Polycarbonate housing, both with Silicone Discs.

SKU	Description
BBCV-MLFL-ABS	Male Luer by Female Luer ABS Check Valve .25 psi Crack
BBCV-MLFL-01-ABS	Male Luer by Female Luer ABS Check Valve .01 psi Crack
BBCV-MLML-ABS	Male Luer by Male Luer ABS Check Valve .25 psi Crack

CMKV SERIES



The CMKV Series Plastic Check Valves are 1/8 inch Male NPT by Barb sizes of 1/8 inch, 3/16 inch, 1/4 inch, and 3/8 inch. The flow is from thread to barb. Material / Disc combinations are available in PVDF with FKM, Polypropylene with FKM, Polycarbonate with Neoprene, Polycarbonate with Silicone, Nylon with Silicone, and Nylon with Neoprene.

SKU	Description
CMKV-18B	1/8 MNPT by 1/8 Barb PVDF/FKM Check Valve
CMKV-14B-NS	1/8 MNPT by 1/4 Barb Nylon/Silicone Check Valve
CMKV-316B	1/8 MNPT by 3/16 Barb PVDF/FKM Check Valve



VC-IG SERIES

The VC-IG Series Plastic Check Valves have housing molded of Polysulfone or Polypropylene with either a POM or Silicone disc. The cracking pressure for these units is .8 H²O or .028 psi. The 10-32 inch units have a cracking pressure of 10 H²O or .36 psi. These check valves were made to be used in low-pressure applications. Reverse flow at 1 psi is available as follows: Polypropylene with Silicone: .20 SCIM, Polysulfone with POM 2.98 SCIM, Polysulfone with POM 1.00 SCIM R2, Polysulfone with Silicone .20 SCIM, and Polysulfone with Silicone .06 SCIM 10-32 inch Female ports only. Maximum pressure is 10 psi excluding the 10-32 inch port which is rated for 75 psi.

SKU	Description
VC-IG-1032F-PSS	1032 Female PS Silicon Check Valve
VC-IG-1B-PPS	1/16 Barb PP Silicone Check Valve
VC-IG-1B-PSC R2	1/16 Barb PS Celcon® Check Valve
VC-IG-1B-PSS	1/16 Barb PS Silicone Check Valve
VC-IG-1S-PPS	1/16 Shaft PP Silicone Check Valve
VC-IG-1S-PSC	1/16 Shaft PS Celcon® Check Valve
VC-IG-1S-PSC R2	1/16 Shaft PS Celcon® Check Valve
VC-IG-1S-PSS	1/16 Shaft PS Silicone Check Valve
VC-IG-2B-PPS	1/8 Barb PP Silicone Check Valve
VC-IG-2B-PSC R2	1/8 Barb PS Celcon® Check Valve
VC-IG-2B-PSS	1/8 Barb PS Silicone Check Valve

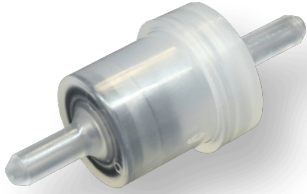


DUCKBILL CHECK VALVES

DUCKBILL CHECK VALVES

Pneuline Supply offers several different duckbill check valve options. Duckbill check valves are usually used in the medical industry, for example in situations where backflow is a main concern.

CNV SERIES



The CNV Series Check Valve is made of Polypropylene and is available in three sizes for 1/16 inch, 5/32 inch, or 1/8 inch ID tubing. The 1/16-inch ID tubing has either a 3-inch water column or an 8-inch water column opening pressure. The 8 inch water column is available with an EPDM or ECH duckbill. The 3-inch water column is offered with only an EPDM duckbill. The 1/8-inch size has a 3-inch water column with an EPDM duckbill. The 5/32-inch size has a 3-inch water column with an EPDM duckbill. A 3-inch water column equals 1/10 psi, and an 8 inch water column equals 1/3 psi. The maximum pressure for this check valve is 30 psi and the temperature range is from 35° F to 150° F.

SKU	Description
CNV-16S-PPEP-3	1/16 inch ID EPDM Duckbill Check Valve 3" water column
CNV-16S-PPEP-8	1/16 inch ID EPDM Duckbill Check Valve 8" water column
CNV-16S-PPEPC-8	1/16 inch ID ECH Duckbill Check Valve 8" water column
CNV-18S-PPEP	1/8 inch ID EPDM Duckbill Check Valve 3" water column
CNV-532S-PPEP-3	5/32 inch ID EPDM Duckbill Check Valve 3" water column

CDV SERIES



This is a non-barbed **Acrylic or Polycarbonate Check Valve** with a Silicone duck bill. This is a normally open, one-way check valve. It prevents backflow leakage with minimal pressure. The ends of the ports measure .134 to accommodate 1/8" ID tubing. These fittings are also available with male and female Luer Locks.

SKU	Description
CDV-125	1/8 inch ID Acrylic Luer Duckbill Check Valve
CDV-125MLL	1/8 inch ID to Male Luer Lock Acrylic Duckbill Check Valve
CDV-125-PC	1/8 inch ID Polycarbonate Duckbill Check Valve
CDV-18	1/8 inch ID Tubing Acrylic Duckbill Check Valve
CDV-FL-125	1/8 inch ID to Female Luer Lock Acrylic Duckbill Check Valve
CDV-FLL125	Female Luer Lock by .125
CDV-FLLML	Female Luer Lock to Male Slip Luer Acrylic Duckbill Check Valve
CDV-FLLMLL	Female Luer Lock to Male Luer Lock Acrylic Duckbill Check Valve

SKU	Description
CDV-ML	1/8 inch ID Male Luer Acrylic Duckbill Check Valve

QCD SERIES - LUER DUCKBILL CHECK VALVES



The QCD Series Luer Check Valves are made of Polycarbonate and have a Silicone duck bill. The low cracking pressure is 0.433 psi, which determines when the component starts to open. The OD sizes are 5/64 inch, 7/64 inch, and 9/64 inch. Also available with female and male Luer Locks.

SKU	Description
QCD-564	5/64 inch OD Tubing Polycarbonate Luer Check Valve
QCD-764	7/64 inch OD Tubing Polycarbonate Luer Check Valve
QCD-964	9/64 inch OD Tubing Polycarbonate Luer Check Valve
QCD-FM	Female by Male Luer Lock Polycarbonate Check Valve

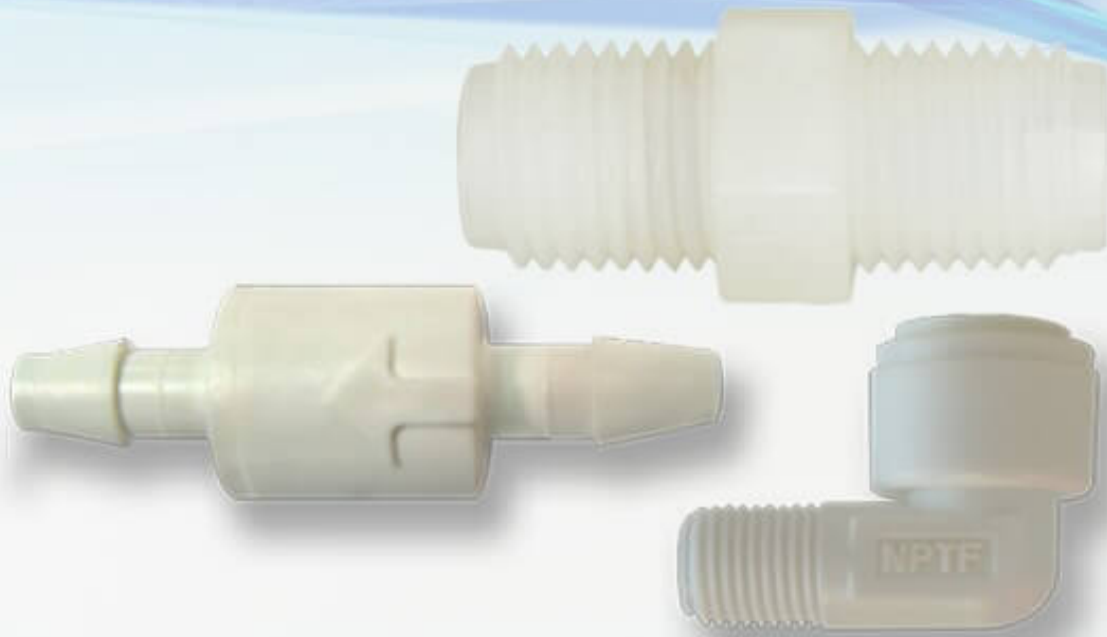
ASD SERIES



These ASD Series single barbed enlarging duckbill Check Valves are available in several materials such as Nylon (N), Polypropylene (PP), or Polycarbonate (PC) housing. These Check Valves have a Silicone diaphragm. The available barb sizes are 1/8 inch by 3/16 inch and 3/16 inch by 1/8 inch.

SKU	Description
ASD-2B	1/8 Barb
ASD-2B3B	1/8 Barb by 3/16 Barb
ASD-3B	3/16 Barb
ASD-3B2B	3/16 Barb by 1/8 Barb





PLASTIC BALL CHECK VALVES

PLASTIC BALL CHECK VALVES

Plastic ball valves simple designs reduce the need for maintenance and energy needs.
The ball inside automatically moves from the flow path to block it.

DCE SERIES



The DCE Series is a rigid male Check Valve elbow made of Acetal that is NSF 51® certified and meets NSF 61® requirements. The available male threads are 1/8 inch, 1/4 inch, and 3/8 inch. OD tubing sizes are 5/32 inch, 3/16 inch, 1/4 inch, 5/16 inch, 3/8 inch, and 1/2 inch. The working pressure at 77° F is 232 psi, and at 158° F it is 145 psi. The working temperature range is from 32° F to 158° F. It can be used for compressed air, inert gases, water, and other fluids.

SKU	Description
DCE-2M-14	1/8 MNPT by 1/4 OD Push-in Elbow Spring-loaded Check Valve
DCE-4M-14	1/4 MNPT by 1/4 OD Push-to Connect Elbow Check Valve
DCE-6M-14	3/8 MNPT by 1/4 OD Push-to Connect Elbow Check Valve

CVK SERIES - MALE CHECK VALVES



The CVK Series are male-by-male Check Valves made of natural PVDF. It has a 316 Stainless Steel spring and ball Viton® O-ring. Other O-ring options are EPDM and Fluorosilicone (blue). These check valves have a 1-2.5 psi cracking pressure with a maximum operating pressure of 220 psi and a maximum working temperature of 180°F. Available with a Hastelloy® spring and PTFE ball. Available Male NPT thread sizes are: 1/8 inch, 1/4 inch, 3/8 inch, and 1/2 inch.

SKU	Description
CVK-2M	1/8 inch NPT Check Valve PVDF
CVK-4M	1/4 NPT Check Valve PVDF
CVK-6M	3/8 inch NPT Check Valve PVDF
CVK-6M-HPTFE	3/8 inch M Check Valve PVDF, Hastelloy®/PTFE/FKM
CVK-8M	1/2 inch NPT Check Valve PVDF
CVK-8M-HPTFE	1/2 inch M Check Valve PVDF, Hastelloy®/PTFE/FKM

MCV SERIES - CHECK VALVES



The MCV Series Check Valves are available in various materials: White Nylon is standard, with Black Nylon optional; White Polypropylene is standard with Black Polypropylene optional. Black PVDF is also available. O-ring Seals are Buna-N, EPDM, Viton®, and Silicone. The standard spring is 302 Stainless Steel with 316 Stainless Steel balls. The maximum operating pressure is 125 psi. and the maximum operating temperature is 140° F. The Standard barb inlet and outlet sizes are for 1/8 inch, 3/16 inch, and 1/4 inch ID tubing. The outlet side is available with a 1/8 Male NPT or 1/4 MNPT. PVDF is sold with PTFE seals and a Hastelloy Spring.

Spring Options:

- 1/2 psi - 302 Stainless
- 1 psi - 302 Stainless
- 2 psi - 302 Stainless
- 3 psi - 302 Stainless

MCV SERIES PRODUCT LIST

Pneuline Part Number	Size	Body	Seal	PSI
MCV-4B-PPE-1	1/4 (4B)	Polypropylene	EPDM	1 PSI
MCV-4B-NV-1/2	1/4 (4B)	Nylon	Viton ®	1/2 PSI
MCV-4B-NV-1	1/4 (4B)	Nylon	Viton ®	1 PSI
MCV-4B3B-NB-2	1/4 (4B) by 3/16 (3B)	Nylon	Buna	2 PSI
MCV-3B-PPV-3	3/16 (3B)	Polypropylene	Viton ®	3 PSI
MCV-3B-PPV-1/2	3/16 (3B)	Polypropylene	Viton ®	1/2 PSI
MCV-3B-PPV-1	3/16 (3B)	Polypropylene	Viton ®	1 PSI
MCV-3B-PPE-2	3/16 (3B)	Polypropylene	EPDM	2 PSI
MCV-3B-PPE-1/2	3/16 (3B)	Polypropylene	EPDM	1/2 PSI
MCV-3B-PPE-1	3/16 (3B)	Polypropylene	EPDM	1 PSI
MCV-3B-NV-1	3/16 (3B)	Nylon	Viton ®	1 PSI
MCV-3B-NV-2	3/16 (3B)	Nylon	Viton ®	2 PSI
MCV-3B4B-PPV-3	3/16 (3B) by 1/4 (4B)	Polypropylene	Viton ®	3 PSI
MCV-3B4B-PPE-3	3/16 (3B) by 1/4 (4B)	Polypropylene	EPDM	3 PSI
MCV-2B-PPV-2	1/8 (2B)	Polypropylene	Viton ®	2 PSI
MCV-2B-PPV-1/2	1/8 (2B)	Polypropylene	Viton ®	1/2 PSI
MCV-2B-PPE-3	1/8 (2B)	Polypropylene	EPDM	3 PSI
MCV-2B-PPE-2	1/8 (2B)	Polypropylene	EPDM	2 PSI
MCV-2B-PPE-1/2	1/8 (2B)	Polypropylene	EPDM	1/2 PSI
MCV-2B-PPE-1	1/8 (2B)	Polypropylene	EPDM	1 PSI
MCV-2B-PPB-2	1/8 (2B)	Polypropylene	Buna	2 PSI

MCV-2B-NV-1/2	1/8 (2B)	Nylon	Viton ® 1/2 PSI
MCV-2B-NV-1	1/8 (2B)	Nylon	Viton ® 1 PSI
MCV-2B-NB-1	1/8 (2B)	Nylon	Buna 1 PSI
MCV-2B4B-PPV-2	1/8 (2B) by 1/4 (4B)	Polypropylene	Viton ® 2 PSI
MCV-2B4B-PPE-1/2	1/8 (2B) by 1/4 (4B)	Polypropylene	EPDM 1/2 PSI
MCV-2B2M-PPV-2	1/8 (2B) 1/8 MNPT	Polypropylene	Viton ® 2 PSI
MCV-4B4B-PPV-1	1/4 (4B)	Polypropylene	Viton ® 1 PSI



POPPET CHECK VALVE

POPPET CHECK VALVES

Poppet check valves offer an easy way to control the timing and quantity of the flow of gas or vapor.



PCVM SERIES

The PCVM series is a push-in acetal poppet check valve, see available sizes and PSI options below.

SKU	DESCRIPTION
PCVM-4	1/4 Push-to-Connect Polypropylene Check Valve 2.75 psi
PCVM-4-2M	1/4 Push-to-Connect by 1/8 MNPT Check Valve .75 psi
PCVM-4-3	1/4 Push-to-Connect Polypropylene 2.75 psi
PCVM-4-5	1/4 Push-to-Connect Polypropylene Check Valve 5 psi
PCVM-4PP	1/4 Push-to-Connect Polypropylene Check Valve .3 psi
PCVM-6	3/8 Push-to-Connect Polypropylene Check Valve .3 psi

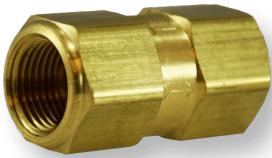
NCV CHECK VALVE SERIES



The NCV Series Nickel-Plated Brass Poppet Check Valve has options of Buna-N, EPDM or FKM seals. The operating pressure is 0 to 125 psi and the flow rate ranges from 2.5 to 9.5 scfm. Input and output port sizes are 10-32 inch UNF and 1/16 inch Barb.

SKU	Description
NCV-10F10F	10-32 Female to Female Nickel-Plated Poppet Check Valves
NCV-10F10M	10-32 Female to Male Nickel-Plated Poppet Check Valves
NCV-10F1B	10-32 Female 1/16 inch Barb Nickel-Plated Poppet Check Valves
NCV-10M10F	10-32 Male to Female Nickel-Plated Poppet Check Valves
NCV-10M1B	10-32 Male 1/16 inch Barb Nickel-Plated Poppet Check Valves
NCV-1B1B	1/16 inch Barb to 1/16 inch Barb Nickel-Plated Poppet Check Valves

PPCV SERIES



The PPCV Series Brass Poppet Check Valve has inlet sizes of 1/8, 1/4 inch, 3/8 inch, 1/2 inch, and 3/4 inch Female NPT threads and 3/8 inch and 1/2 inch Male NPT threads. Outlet sizes are 1/4 inch, 3/8 inch, 1/2 inch, and 3/4 inch, 1 Inch Female NPT threads. End body options are 1/4 inch and 3/8 inch Male Flare, and 1/4 inch Female Flare. Seal options are Buna-N, EPDM and Viton®. The cracking pressure on the 302 Stainless Steel spring is 1 psi (standard). Maximum operating pressure is 500 PSI for the 1/8 size and 1200 PSI for all the other sizes. The maximum operating temperature is 180° F. Two sizes of valves, the 3/8 FNPT and the 1-inch FNPT are available in 303 stainless.

SKU	Description
PPCV-18M	1/8 inch MNPT Brass Poppet Check Valve
PPCV-14MFL	1/4 Male Flare to 1/4 Male Flare Brass Poppet Check Valve
PPCV-18M14MFL	1/8 inch MNPT to 1/4 Male Flare Brass Poppet Check Valve
PPCV-14MFL18M	1/4 Male Flare to 1/8 MNPT Brass Poppet Check Valve
PPCV-14MFL18M-NP	1/4 Male Flare to 1/8 MNPT Nickel Plated Brass Poppet Check Valve
PPCV-14F	1/4 inch Female Brass Poppet Check Valve
PPCV-14F-1-V	1/4 inch Female Brass Poppet Check Valve <1 psi FKM Seals
PPCV-14F14MFL	1/4 FNPT to 1/4 Male Flare Brass Poppet Check Valve
PPCV-38MFL	3/8 Male Flare Brass Poppet Check Valve
PPCV-38MF	3/8 MNPT to 3/8 FNPT Brass Poppet Check Valve
PPCV-38F	3/8 FNPT to 3/8 FNPT Brass Poppet Check Valve
PPCV-12M38F	
PPCV-12F	1/2 inch Female Brass Poppet Check Valve
PPCV-12MF	1/2 inch Male 1/2 inch Female Brass Poppet Check Valve
PPCV-34F	3/4 inch Female Brass Poppet Check Valve
PPCV-34MF	3/4 inch Male 3/4 inch Female Brass Poppet Check Valve



FSPV SERIES - POPPET CHECK VALVES

The FSPV Series Poppet Check Valves come in Black PVDF, Black Polypropylene, and White Polypropylene with a choice of Buna-N, EPDM, Viton®, or Kalrez® seal. The standard spring is 302 Stainless Steel with a cracking pressure of 1/3 psi. Optional springs of 1 or 7 psi are available. These high-flow valves can be used in pressures up to 125 psi. Hastelloy spring is optional. The inlet and outlet sizes are Female NPT 1/4 inch, 3/8 inch, 1/2 inch, and 3/4 inch, and Male NPT size of 1/2 inch.

SKU	Description
FSPV-12F	1/2 FNPT Poly Poppet Check Valve
FSPV-12F12M	1/2 FNPT by 1/2 MNPT Poly Poppet Check Valve
FSPV-12M12M	1/2 MNPT by 1/2 MNPT Poly Poppet Check Valve
FSPV-12M-HV	1/2 MNPT Valve Hastelloy® FKM Poppet Check Valve
FSPV-14F	1/4 FNPT Poly FKM 302 1 psi Poppet Check Valve
FSPV-14F-.3E-WP	1/4 FNPT White Poly EPDM Seals 1/3 psi Poppet Check Valve
FSPV-14F-HV-1	1/4 FNPT Poly FKM Hastelloy® 1 psi Poppet Check Valve
FSPV-34F	3/4 FNPT Poly FKM Disk 1/3 psi Poppet Check Valve
FSPV-34F-11WC	3/4 FNPT Poly FKM 11" C 1/3 psi Poppet Check Valve
FSPV-34F-5WC	3/4 FNPT Poly FKM 5" WC Poppet Check Valve
FSPV-34F-HV	3/4 FNPT Poly FKM Disk Hastelloy® 1/3 psi Poppet Check Valve
FSPV-34F-HV-.7	3/4 FNPT Poly FKM O-Ring Hastelloy® .7 psi Poppet Check Valve
FSPV-34F-HV-1.5	3/4 FNPT Poly FKM O-Ring Hastelloy® 1.5 psi Poppet Check Valve
FSPV-34F-HV-11WC	3/4 FNPT Poly FKM O-Ring Hastelloy® 11 WC Poppet Check Valve
FSPV-38F	3/8 FNPT Poly FKM 302 1/3 psi Poppet Check Valve
FSPV-38F-E-9	3/8 FNPT Poly FKM 302 1 psi Poppet Check Valve
FSPV-38F-HV-2	3/8 FNPT Poly Hastelloy® FKM #2 O-Ring Poppet Check Valve

SPC SERIES



The SPC Series Plastic are PVC, Polypropylene, Nylon Plastic Check Valves and have 302 Stainless Steel springs, 316 Stainless Steel balls, and EPDM seals. 1 psi spring is standard with optional 1/3, 3, 5, 7, 10, or 12-pound springs. Available in barbs, MNPT, FNPT, Push-in connections with multiple combinations. Hastelloy spring, PTFE ball, and FKM O-rings for aggressive environments are available.

SKU	Description
SPC-2B2B-PB-12	1/8 inch Barb Valve Polypropylene Buna 12 psi
SPC-2B-PP-E-10	1/8 inch Barb Polypropylene EPDM 10 psi
SPC-2B-V-12	1/8 inch Barb Viton® with 12 Spring
SPC-2C2C	1/8 inch Compression by 1/8 inch Compression
SPC-2C2M-H-V	1/8 inch Compression by 1/8 inch MNPT Hastelloy® FKM
SPC-2F2F	1/8 inch Female by 1/8 inch Female
SPC-2F2F-HV	1/8 inch Female NPT with Hastelloy® FKM Seals
SPC-2M2M	1/8 inch Male by 1/8 inch Male
SPC-2M4F-E	1/8 inch NPT to 1/4 inch Female EPDM Seals
SPC-4B2M-HV-12	1/4 inch Barb to 1/8 inch MNPT Hastelloy® FKM 12 psi
SPC-4B2M-HV-3	1/4 inch Barb to 1/8 inch MNPT Hastelloy® FKM 3psi
SPC-4B4B	1/4 inch Barb by 1/4 inch Barb
SPC-4B4B-HV	1/4 inch Barb Hastelloy® FKM .5 psi
SPC-4B4B-V-12	1/4 inch Barb FKM with 12 spring
SPC-4B4M-BKPP-HV-1/3	1/4 inch Barb 1/4 inch Male Black Polypropylene FKM Hastelloy® 1/3 psi
SPC-4B4M-VH	1/4 inch Barb by 1/4 inch MNPT FKM/Hastelloy®
SPC-4B-V-12	1/4 inch Barb Viton® with 12 psi Spring
SPC-4B-V-H-1	1/4 inch Barb PVC FKM PTFE/Hastelloy® 1 psi
SPC-4C2M-H-V	1/4 inch Compression by 1/8 inch MNPT Hastelloy® FKM
SPC-4C4C	1/4 inch Compression by 1/4 inch Compression
SPC-4C4M-K-H-V	1/4 inch Compression 1/4 inch Male PVDF Hastelloy® FKM
SPC-4F4F	1/4 inch Female by 1/4 inch Female
SPC-4F4F-H-V	1/4 inch F by 1/4 inch Female Hastelloy® FKM
SPC-4F4F-K-H-V	1/4 inch Female PVDF Hastelloy® FKM
SPC-4F4FPP-H-V-3	1/4 inch Female Polypropylene Hastelloy® FKM 3 psi
SPC-4F4M-H-V-90PP	1/4 inch Female by 1/4 inch NPT Polypropylene Hastelloy®/ FKM 90 Micron
SPC-4F4M-K-H-V	1/4 inch Female by 1/4 inch M PVDF Hastelloy® FKM
SPC-4M4B-HV	1/4 inch Male 1/4 inch Barb FKM Hastelloy®
SPC-4M4F-H-V	1/4 inch Male by 1/4 inch Female Hastelloy® FKM 1 psi
SPC-4M4F-K-H-V	1/4 inch Male by 1/4 inch Female PVDF Hastelloy® FKM

SKU	Description
SPC-4M4M	1/4 inch Male by 1/4 inch Male
SPC-4M4M-H-V	1/4 inch Male by 1/4 inch Male Hastelloy® FKM 1 psi
SPC-4M4P	1/4 inch Male 1/4 inch Push-in
SPC-4M6B	1/4 inch Male 3/8 inch Barb
SPC-4P2M-H-V	1/4 inch Push-in by 1/8 inch Male Hastelloy®
SPC-4P4P	1/4 inch Push-in by 1/4 inch Push-in
SPC-4P4P-HV	1/4 inch Push-in Hastelloy® FKM
SPC-4P4P-SS-HV	1/4 inch Push-in Stainless Steel Ball Hastelloy® FKM
SPC-4P6B-H-V-7	1/4 inch Push-in 3/8 inch Barb Hastelloy® FKM 7
SPC-4PI2M-H-V	1/4 inch Push-in by 1/8 inch Male Hastelloy®/ FKM
SPC-4S4P	1/4 inch Stem by 1/4 inch Push-in
SPC-6B6B	3/8 inch Barb by 3/8 inch Barb
SPC-6B-F-1/3	3/8 inch Barb Fluoroelastomer 1/3 psi
SPC-6P4F-H-V	3/8 inch Push-in by 1/4 inch Female Hastelloy®/ Viton®
SPC-6P4M-H-V	3/8 inch Push-in by 1/4 inch Male Hastelloy®/ Viton®
SPC-6P-6B-H-V	3/8 inch Push-in 3/8 inch Barb Hastelloy® FKM 7 psi
SPC-6P-6B-H-V-R	3/8 inch Push-in 3/8 inch Barb Hastelloy® FKM 7 psi
SPC-6P6M-H-V RV1	3/8 inch Push-in by 3/8 inch Male Hastelloy®/ Viton®
SPC-6S6P	3/8 inch Stem by 3/8 inch Push-in
SPC-8B8B	1/8 inch Male by 1/8 inch Male



CCV SERIES - POPPET CHECK VALVES

The CCV Series are miniature Poppet Check Valves and Pressure Release Valves available with 1/8 inch Male NPT threads and 1/4 inch compression fittings. The NPT fittings are made of Polypropylene, Nylon, and ABS with O-rings made of Buna-N, EPDM, Viton®, Silicone, or fluorosilicone. The spring pressure is 20 psi. The compression fittings are made of Polypropylene with a .713 OD size.

SKU	Description
CCV-2M14C-1	1/8 MNPT by 1/4 Comp Polypropylene / EPDM 1 psi
CCV-2M14C-1.5	1/8 MNPT by 1/4 Comp Polypropylene / EPDM 1.5 psi
CCV-2M14C-3	1/8 MNPT by 1/4 Comp Polypropylene / EPDM 3 psi
CCV-2M14C-3-PPS	1/8 MNPT by 1/4 Comp Polypropylene / Silicone 3 psi
CCV-2M-3	1/8 MNPT by 1/8 MNPT Polypropylene / EPDM 3 psi
CCV-4C6M-3	1/4 Comp by 3/8 MNPT Polypropylene / EPDM 3 psi
CCV-4M14C-1	1/4 MNPT by 1/4 Comp Polypropylene / EPDM 1 psi

SKU	Description
CCV-4M-4	1/4 MNPT by 1/4 MNPT Polypropylene / EPDM 4 psi

MSV SERIES | SPRING-LOADED CHECK VALVES



Pneuline Supply, Inc. manufactures the MSV Series inline spring-loaded check valves in a class 8 clean room environment specifically for use in medical applications. Custom molding allows for customer specific requirements which include resin options, connector variations, and O-ring selections. Available resin options include Polycarbonate, Radiation-stable Polycarbonate, and Kynar® 720 (PVDF). Other custom resins are available upon request. Barbed connectors are available in 1/8 inch, 3/16 inch, and 1/4 inch standard flow or 1/4 inch high flow, 5/16 inch, and 3/8 inch. Springs are made of 316 Stainless Steel or Hastelloy® in .022 psi, .25 psi, .50 psi, 1 psi, 5 psi, or 10 psi. Passivated springs are available. O-ring options are Silicone USP class VI, Fluorosilicone, EPDM, Viton®, or Kalrez®. To make this product truly unique, we offer custom laser marking for identification purposes such as part number sequencing, lot numbers, or company name.

**Poppet and Piston are optional.*

[Download the MSV Series Flyer](#)

SKU	Description
MSV-2B-AC-6	1/8 Valve Acetal EPDM 6 PSI
MSV-2B-AC-E-.25	1/8 Valve Acetal EPDM .22
MSV-2B-AC-E-1	1/8 Valve Acetal EPDM 1 PSI
MSV-2B-AC-E-5	1/8 Valve Acetal EPDM 5 PSI
MSV-3BAC-.75V-41	3/16 Acetal .75 Viton with 41 micron
MSV-3B-AC-B-1	3/16 Valve Acetal Buna 1
MSV-3B-AC-E-1	3/16 Valve Acetal EPDM 1
MSV-3B-K720-1SS-V	3/16 Kynar 720 Valve Viton 1 PSI 316 SS
MSV-3B-K720-E-.5H	3/16 Kynar 720 Valve EPDM .5 Hastelloy®
MSV-3B-PC-E-.5	3/16 Barb PC EPDM 1/2 PSI
MSV-3B-PC-E-.75	3/16 Barb PC Valve EPDM .75
MSV-3B-PC-E-1	3/16 Barb PC EPDM 1PSI
MSV-3B-Rx2530-6WC-S	3/16 Barb RSPC Valve 6WC Silicone
MSV-4B-PC-S-.22PI	1/4 Valve Polycarb Silicone .22
MSV-4B-PC-S-.5	1/4 Valve Polycarb Silicone .5

SKU	Description
MSV-5B-Rx2530-6WC-S	5/16 Barb RSPC Spring Valve 6WC Silicone
MSV-6B-AC-.22 E	3/8 Valve Acetal .22 EPDM
MSV-6B-AC-E-1	3/8 Valve Acetal EPDM 1 PSI
MSV-6B-K720-E-1	3/8 Valve Kynar EPDM 1 PSI
MSV-6B-Rx2530-6WC-S	5/16 Barb RSPC Spring Valve 6WC Silicone



SELF-SEALING CHECK VALVES

SELF-SEALING CHECK VALVES

Our PSSV Series is a new addition to our check valve collection, these valves are used to shut out backflow in liquid and air applications.



PSSV SERIES- SELF-SEAL CHECK VALVES

Our **PSSV Series, Self-sealing Check Valves**, are made from either Polycarbonate or Polypropylene housings with Barb connector sizes for 3/16 inch ID tubing or 5/16 inch ID tubing. The product is made in a class 7 clean room. The seal is a retractable silicone disk that prevents back-flow in several air and liquid applications making it an ideal option for the Medical Industry for air applications including respiratory, ventilator, bio-pharmaceutical. The product can also be used with fluid applications for the medical devices. Designed for pressures under 50 PSI. All material are compatible with Gamma Sterilization 6 Mrads, and ETO Sterilization.

Additional product materials are Radiation Stable Polycarbonate and PVDF. Optional sealing material is EPDM with qualifying volumes. Additional barb sizes, Male and Female Luer connections and Bond-in connections can be designed and provided with quantity volumes.

- *Open pressure is approximately .20 PSI*
- *Flow is 56.29 l/h*
- *Crack Pressure is .001 PSI*

SKU	Description
PSSV-3B-PP	3/16 inch by 3/16 inch Polypropylene Barbed Self-Sealing Check Valve
PSSV-3B-PC	3/16 inch by 3/16 inch Polycarbonate Barbed Self-Sealing Check Valve
PSSV-5B-PP	5/16 inch by 5/16 inch Polypropylene Barbed Self-Sealing Check Valve
PSSV-5B-PC	5/16 inch by 5/16 inch Polycarbonate Barbed Self-Sealing Check Valve
PSSV-5B3B-PP	5/16 inch by 3/16 inch Polypropylene Barbed Self-Sealing Check Valve
PSSV-5B3B-PC	5/16 inch by 3/16 inch Polycarbonate Barbed Self-Sealing Check Valve