



# HOSE BARB FITTINGS

## HOSE BARB FITTINGS

Pneuline offers Hose Barb Fittings perfect for irrigation, plumbing, and chemical & pharmaceutical applications. Shop Now and find the perfect fit for your connection.



## AC SERIES

AC Series connectors are Brass with male or female threads on one end with a nut for tightening. The other end is smooth for ease of attaching tubing. In addition, they will connect to any 10-32 threaded inlet. Furthermore, the OD tube sizes are 5/32", 1/4", and 3/8".

---



## ATD SERIES

The ATD Series is an Adjustable Brass Tee adapter with UNF threads by single barbs.

---

SKU	DESCRIPTION
ATD-1018	10-32 by 1/8 Barb Adjustable Tee
ATD-10X1B	10-32 by 1/16 Barb Adjustable Tee



## BHMT SERIES

The BHMT Series is a Brass Tee. The size available is 1/4" male NPT threads to 3/8" barb. In addition, the maximum pressure for this Tee is 150 psi and the temperature range is -40° F to 160° F. This product is designed to be used with hose clamps.

SKU	DESCRIPTION
BHMT-4M6B	1/4 MNPT to 3/8 Barb Brass Tee



## BHFA SERIES

The BHFA Series is a Brass multi-barbed rigid female barstock adapter. It has Female NPT threads on the opposite side of the barbed end. Available FNPT thread sizes are 1/8 inch, 1/4 inch, 3/8 inch, 1/2 inch, and 3/4 inch. Available barb sizes range from 1/8 inch to 1 inch. Flow can be equal or reduced. The temperature range is -40° F to 160° F and the working pressure is 150 psi.

SKU	Description
BHFA-2F2B	1/8 inch FNPT by 1/8 inch Brass Multi-Barbed Adapter
BHFA-2F3B	1/8 inch FNPT by 3/16 inch Brass Multi-Barbed Adapter
BHFA-2F4B	1/8 inch FNPT by 1/4 inch Brass Multi-Barbed Adapter
BHFA-2F5B	1/8 inch FNPT by 5/16 inch Brass Multi-Barbed Adapter
BHFA-2F6B	1/8 inch FNPT by 3/8 inch Brass Multi-Barbed Adapter
BHFA-4F2B	1/4 inch FNPT by 1/8 inch Brass Multi-Barbed Adapter
BHFA-4F3B	1/4 inch FNPT by 3/16 inch Brass Multi-Barbed Adapter
BHFA-4F4B	1/4 inch FNPT by 1/4 inch Brass Multi-Barbed Adapter
BHFA-4F5B	1/4 inch FNPT by 5/16 inch Brass Multi-Barbed Adapter
BHFA-4F6B	1/4 inch FNPT by 3/8 inch Brass Multi-Barbed Adapter
BHFA-4F8B	1/4 inch FNPT by 1/2 inch Brass Multi-Barbed Adapter
BHFA-6F4B	3/8 inch FNPT by 1/4 inch Brass Multi-Barbed Adapter
BHFA-6F5B	3/8 inch FNPT by 5/16 inch Brass Multi-Barbed Adapter
BHFA-6F6B	3/8 inch FNPT by 3/8 inch Brass Multi-Barbed Adapter
BHFA-6F8B	3/8 inch FNPT by 1/2 inch Brass Multi-Barbed Adapter

SKU	Description
BHFA-8F6B	1/2 inch FNPT by 3/8 inch Brass Multi-Barbed Adapter
BHFA-8F8B	1/2 inch FNPT by 1/2 inch Brass Multi-Barbed Adapter



## BHBE SERIES

The BHBE Series is a forged Brass multi-barbed 90° Elbow connector. Barb sizes range from 1/8 inch to 1/2 inch. The working temperature range is -40° F to 160° F. Maximum pressure rating is 150 psi. This fitting is designed to be used with a hose clamp.

---

SKU	Description
BHBE-4-2	1/4 inch by 1/8 inch Brass Multi-Barbed Reducing Elbow Connector
BHBE-4-4	1/4 inch by 1/4 inch Brass Multi-Barbed Elbow Connector
BHBE-5-5	5/16 inch by 5/16 inch Brass Multi-Barbed Elbow Connector
BHBE-6-2	3/8 inch by 1/8 inch Brass Multi-Barbed Reducing Elbow Connector
BHBE-6-4	3/8 inch by 1/4 inch Brass Multi-Barbed Reducing Elbow Connector
BHBE-6-6	3/8 inch by 3/8 inch Brass Multi-Barbed Elbow Connector
BHBE-8-4	1/2 inch by 1/4 inch Brass Multi-Barbed Reducing Elbow Connector
BHBE-8-6	1/2 inch by 3/8 inch Brass Multi-Barbed Reducing Elbow Connector
BHBE-8-8	1/2 inch by 1/2 inch Brass Multi-Barbed Elbow Connector



## BHME45 SERIES

The BHME45 Series is a Forged Brass multi-barbed 45° Elbow with male NPT threads. Flow can be equal or reduced. The temperature range is -40° F to 160° F and the working pressure is 150 psi. Furthermore, the Barstock is optional for the sizes shown below.

---

SKU	Description
BHME45-2M6B	1/8 inch MNPT by 3/8 inch Brass Multi-Barbed 45 Degree Elbow Adapter
BHME45-2M4B	1/8 inch MNPT by 1/4 inch Brass Multi-Barbed 45 Degree Elbow Adapter
BHME45-4M4B	1/4 inch MNPT by 1/4 inch Brass Multi-Barbed 45 Degree Elbow Adapter
BHME45-4M4B-B	1/4 inch MNPT by 1/4 inch Brass Multi-Barbed 45 Degree Barstock Elbow Adapter
BHME45-4M6B	1/4 inch MNPT by 3/8 inch Brass Multi-Barbed 45 Degree Elbow Adapter
BHME45-4M8B	1/4 inch MNPT by 1/2 inch Brass Multi-Barbed 45 Degree Elbow Adapter
BHME45-6M6B	3/8 inch MNPT by 3/8 inch Brass Multi-Barbed 45 Degree Elbow Adapter
BHME-456M8B	3/8 inch MNPT by 1/2 inch Brass Multi-Barbed 45 Degree Elbow Adapter
BHME-456M10B	3/8 inch MNPT by 5/8 inch Brass Multi-Barbed 45 Degree Elbow Adapter



## BHM SERIES

The BHM Series is a barstock Brass multi-barbed straight connector. Barb sizes range from 1/8 inch to 1 inch. The working temperature range is -40° F to 160° F. Maximum pressure rating is 150 psi. This fitting is designed to be used with a hose clamp.

---

SKU	Description
BHM-2	1/8 inch by 1/8 inch Brass Multi-Barbed Straight Connector
BHM-3	3/16 inch by 3/16 inch Brass Multi-Barbed Straight Connector
BHM-4	1/4 inch by 1/4 inch Brass Multi-Barbed Straight Connector
BHM-5	5/16 inch by 5/16 inch Brass Multi-Barbed Straight Connector
BHM-6	3/8 inch by 3/8 inch Brass Multi-Barbed Straight Connector
BHM-8	1/2 inch by 1/2 inch Brass Multi-Barbed Straight Connector
BHM-10	5/8 inch by 5/8 inch Brass Multi-Barbed Straight Connector
BHM-12	3/4 inch by 3/4 inch Brass Multi-Barbed Straight Connector



## BHT SERIES

The BHT Series is a forged Brass multi-barbed Tee connector. Available barb sizes are 1/8 inch, 1/4 inch, and 3/4 inch. The working temperature range is -40° F to 160° F. Maximum working pressure is 150 psi. This fitting is designed for use with a hose clamp.

---

SKU	Description
BHT-2	1/8 inch Brass Multi-Barbed Tee Connector
BHT-4	1/4 inch Brass Multi-Barbed Tee Connector
BHT-34	3/4 inch Brass Multi-Barbed Tee Connector



## BHFE SERIES

The BHFE Series is a Brass 90° Elbow, Female NPT threads to multi-barb Adapter. Available FNPT sizes are 1/8 inch, 1/4 inch, and 3/8 inch. Available barb sizes are 1/4 inch, 5/16 inch, 3/8 inch, and 1/2 inch. The temperature range is -40° F to 160° F. The maximum working pressure is 150 psi. This fitting is intended for use with a hose clamp.

SKU	Description
BHFE-2F4B	1/8 inch FNPT by 1/4 inch Brass Multi-Barbed 90° Elbow Adapter
BHFE-2F5B	1/8 inch FNPT by 5/16 inch Brass Multi-Barbed 90° Elbow Adapter
BHFE-2F6B	1/8 inch FNPT by 3/8 inch Brass Multi-Barbed 90° Elbow Adapter
BHFE-4F4B	1/4 inch FNPT by 1/4 inch Brass Multi-Barbed 90° Elbow Adapter
BHFE-4F5B	1/4 inch FNPT by 5/16 inch Brass Multi-Barbed 90° Elbow Adapter
BHFE-4F6B	1/4 inch FNPT by 3/8 inch Brass Multi-Barbed 90° Elbow Adapter
BHFE-4F8B	1/4 inch FNPT by 1/2 inch Brass Multi-Barbed 90° Elbow Adapter
BHFE-6F4B	3/8 inch FNPT by 1/4 inch Brass Multi-Barbed 90° Elbow Adapter
BHFE-6F6B	3/8 inch FNPT by 3/8 inch Brass Multi-Barbed 90° Elbow Adapter
BHFE-6F8B	3/8 inch FNPT by 1/2 inch Brass Multi-Barbed 90° Elbow Adapter
BHFE-8F6B	1/2 inch FNPT by 3/8 inch Brass Multi-Barbed 90° Elbow Adapter



## BHMA SERIES

The BHMA Series is a rigid multi-barbed Brass Barstock Adapter. It adapts from male NPT threads to barbs. Available MNPT sizes range from 1/16 inch to 1 inch. Available barb sizes range from 1/8 inch to 3/4 inch. Flow can be equal or reduced. The temperature range is -40° F to 160° F and the working pressure is 150 psi.

SKU	Description
BHMA-1M2B	1/16 inch MNPT by 1/8 inch Brass Multi-Barbed Brass Straight Adapter
BHMA-1M4B	1/16 inch MNPT by 1/4 inch Brass Multi-Barbed Brass Straight Adapter
BHMA-2M2B	1/8 inch MNPT by 1/8 inch Brass Multi-Barbed Brass Straight Adapter

<b>SKU</b>	<b>Description</b>
BHMA-2M2B-SH	1/8 inch MNPT by 1/8 inch Brass Multi-Barbed Brass Straight Adapter Short .475
BHMA-2M3B	1/8 inch MNPT by 3/16 inch Brass Multi-Barbed Brass Straight Adapter
BHMA-2M4B	1/8 inch MNPT by 1/4 inch Brass Multi-Barbed Brass Straight Adapter
BHMA-2M5B	1/8 inch MNPT by 5/16 inch Brass Multi-Barbed Brass Straight Adapter
BHMA-2M6B	1/8 inch MNPT by 3/8 inch Brass Multi-Barbed Brass Straight Adapter
BHMA-2M8B	1/8 inch MNPT by 1/2 inch Brass Multi-Barbed Brass Straight Adapter
BHMA-4M2B	1/4 inch MNPT by 1/8 inch Brass Multi-Barbed Brass Straight Adapter
BHMA-4M4B	1/4 inch MNPT by 1/4 inch Brass Multi-Barbed Brass Straight Adapter
BHMA-4M6B	1/4 inch MNPT by 3/8 inch Brass Multi-Barbed Brass Straight Adapter
BHMA-4M8B	1/4 inch MNPT by 1/2 inch Brass Multi-Barbed Brass Straight Adapter
BHMA-6M4B	3/8 inch MNPT by 1/4 inch Brass Multi-Barbed Brass Straight Adapter
BHMA-6M6B	3/8 inch MNPT by 3/8 inch Brass Multi-Barbed Brass Straight Adapter
BHMA-6M8B	3/8 inch MNPT by 1/2 inch Brass Multi-Barbed Brass Straight Adapter
BHMA-8M8B	1/2 inch MNPT by 1/2 inch Brass Multi-Barbed Brass Straight Adapter
BHMA-12M12B	3/4 inch MNPT by 3/4 inch Brass Multi-Barbed Brass Straight Adapter
BHMA-12M8B	3/4 inch MNPT by 1/2 inch Brass Multi-Barbed Brass Straight Adapter



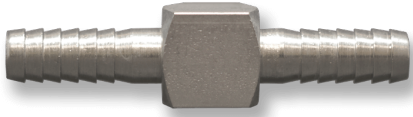
## BHME SERIES



The BHME Series is a forged Brass multi-barbed 90° Elbow Adapter with male NPT threads. Available MNPT thread sizes range from 1/8 inch to 1 inch. In addition, available barb sizes range from 3/16 inches to 3/4 inches. Flow can be equal or reduced. The working temperature range is -40° to 160° and the working pressure is 150 psi. Barstock is optional for some sizes (see list below).

SKU	Description
BHME-2M3B	1/8 MNPT by 3/16 Hose Barb Elbow Forged
BHME-2M4B	1/8 MNPT By 1/4 Hose Barb Elbow Forged B
BHME-2M5B	1/8 MNPT By 5/16 Hose Barb Elbow Forged
BHME-2M6B	1/8 MNPT By 3/8 Barb Elbow Forged
BHME-38M18B-R2	3/8 MNPT By 1/8 Hose Barb Elbow Forged 2 Piece Unit
BHME-4M3B	1/4 MNPT by 3/16 Hose Barb Elbow Forged
BHME-4M4B	1/4 MNPT By 1/4 Hose Barb Elbow Forged B
BHME-4M5B	1/4 MNPT by 5/16 Hose Barb Elbow Forged
BHME-4M6B	1/4 MNPT by 3/8 Hose Barb Elbow Forged B
BHME-4M8B	1/4 MNPT By 1/2 Hose Barb Elbow Forged
BHME-6M4B-B	3/8 MNPT By 1/4 Hose Barb Elbow Barstock
BHME-6M5B	3/8 MNPT By 5/16 Hose Barb Elbow Forged
BHME-6M6B	3/8 MNPT By 3/8 Hose Barb Elbow Forged B
BHME-6M8B	3/8 MNPT By 1/2 Hose Barb Elbow Forged B
BHME-8M6B	1/2 MNPT By 3/8 Hose Barb Elbow Forged
BHME-8M8B	1/2 MNPT By 1/2 Hose Barb Elbow Forged
BHME-12M12B	3/4 MNPT by 3/4 Barb Elbow
BHME-16M12B	1 Inch MNPT by 3/4 Barb Elbow

## BHFT SERIES



The BHFT Series is a multi-barbed Brass Tee Adapter with female NPT threads to barbs. FNPT thread sizes are: 1/8 inch, 1/4 inch, and 3/8 inch. Barb sizes are 1/4 inch, 5/16 inch, and 3/8 inch. This series is in Barstock only. Available in Nickel Plate.

---

SKU	Description
BHFT-2F4B	1/8 inch FNPT by 1/4 inch Brass Multi-Barbed Tee Adapter
BHFT-2F5B	1/8 inch FNPT by 5/16 inch Brass Multi-Barbed Tee Adapter
BHFT-2F6B	1/8 inch FNPT by 3/8 inch Brass Multi-Barbed Tee Adapter
BHFT-4F4B	1/4 inch FNPT by 1/4 inch Brass Multi-Barbed Tee Adapter
BHFT-4F6B	1/4 inch FNPT by 3/8 inch Brass Multi-Barbed Tee Adapter
BHFT-6F6B	3/8 inch FNPT by 3/8 inch Brass Multi-Barbed Tee Adapter

## BBX SERIES



This series of Brass connectors is composed of straight connectors, elbows, tees, and crosses. The working temperature range is -40° F to 160° F. The straights, tees, and crosses have equal barb sizes. The elbows are both equal and reducing. These fittings are designed for use with hose clamps.

---

SKU	Description
BBX-4	1/4 inch Brass Multi-Barbed Cross Connector
BBX-5	5/16 inch Brass Multi-Barbed Cross Connector
BBX-6	3/8 inch Brass Multi-Barbed Cross Connector

## 186-2 SERIES

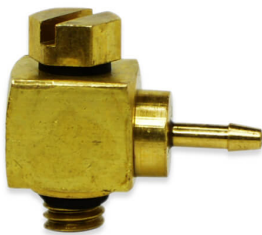


186-2 Series is a Brass Barb Fittings are designed to fit .073 holes using a Loctite adhesive.

---

SKU	Description
186-2	1/16 inch Barbed Brass Bondable Insert

## AED SERIES



The AED Series are Adjustable 10-32 inch male UNF to barb Brass elbows in 1/16 inch or 1/8 inch single barbs.

SKU	Description
AED-1018	10-32 inch Male UNF by 1/8 inch Barbed Adjustable Elbow
AED-10X1B	10-32 inch Male UNF by 1/16 inch Barbed Adjustable Elbow
AED-10X2B	10-32 inch Male UNF by 1/8 inch Barbed Adjustable Elbow



## DCP SERIES

The DCP Series is a Brass 10-32 inch male UNF thread to multi-barb adapter. It is available with 2, 3, or 4 barbs. Available barb sizes are 1/16 inch and 1/8 inch ID. This series works well with Polyurethane tubing. The maximum working pressure is 150 psi and the temperature range is -65° F to 90° F.

SKU	Description
DCP-10-2DB	10-32 inch UNF by 1/8 inch Double Barb Brass Adapter
DCP-10-2Q	10-32 inch UNF by Quad 1/8 inch Barb Brass Adapter
DCP-10-2TB	10-32 inch UNF by 1/8 inch Triple Barb Brass Adapter

## FEV SERIES



The FEV Series are Brass female adapters with sharp barbs. The barbs are available at 60°, 90° and 120° on the flats of the hex. Female NPT thread sizes include 1/8 inch, 1/4 inch, and 3/8 inch. Barb sizes range from .170 inch to 1/8 inch.

SKU	Description
FEV120-2F170B	1/8 inch FNPT by .170 Barb 120° Elbow Adapter
FEV120-2F1B	1/8 inch FNPT by 1/16 inch Barb 120° Elbow Adapter
FEV120-2F2B	1/8 inch FNPT by 1/8 inch Barb 120° Elbow Adapter
FEV120-2F332B	1/8 inch FNPT by 3/32 Barb 120° Elbow Adapter
FEV120-2F532B	1/8 inch FNPT by 5/32 inch Barb 120° Elbow Adapter
FEV120-2F564B	1/8 inch FNPT by 5/64 inch Barb 120° Elbow Adapter
FEV120-4F170B	1/4 inch FNPT by .170 Barb 120° Elbow Adapter
FEV120-4F1B	1/4 inch FNPT by 1/16 inch Barb 120° Elbow Adapter
FEV120-4F2B	1/4 inch FNPT by 1/8 inch Barb 120° Elbow Adapter
FEV120-4F332B	1/4 inch FNPT by 3/32 Barb 120° Elbow Adapter
FEV120-4F532B	1/4 inch FNPT by 5/32 inch Barb 120° Elbow Adapter
FEV120-4F564B	1/4 inch FNPT by 5/64 inch Barb 120° Elbow Adapter
FEV120-6F170B	3/8 inch FNPT by .170 Barb 120° Elbow Adapter
FEV120-6F1B	3/8 inch FNPT by 1/16 inch Barb 120° Elbow Adapter
FEV120-6F2B	3/8 inch FNPT by 1/8 inch Barb 120° Elbow Adapter

SKU	Description
FEV120-6F332B	3/8 inch FNPT by 3/32 Barb 120° Elbow Adapter
FEV120-6F532B	3/8 inch FNPT by 5/32 inch Barb 120° Elbow Adapter
FEV120-6F564B	3/8 inch FNPT by 5/64 inch Barb 120° Elbow Adapter
FEV60-2F170B	1/8 inch FNPT by .170 Barb 60° Elbow Adapter
FEV60-2F1B	1/8 inch FNPT by 1/16 inch Barb 60° Elbow Adapter
FEV60-2F2B	1/8 inch FNPT by 1/8 inch Barb 60° Elbow Adapter
FEV60-2F332B	1/8 inch FNPT by 3/32 Barb 60° Elbow Adapter
FEV60-2F532B	1/8 inch FNPT by 5/32 inch Barb 60° Elbow Adapter
FEV60-2F564B	1/8 inch FNPT by 5/64 inch Barb 60° Elbow Adapter
FEV60-4F170B	1/4 inch FNPT by .170 Barb 60° Elbow Adapter
FEV60-4F1B	1/4 inch FNPT by 1/16 inch Barb 60° Elbow Adapter
FEV60-4F2B	1/4 inch FNPT by 1/8 inch Barb 60° Elbow Adapter
FEV60-4F332B	1/4 inch FNPT by 3/32 Barb 60° Elbow Adapter
FEV60-4F532B	1/4 inch FNPT by 5/32 inch Barb 60° Elbow Adapter
FEV60-4F564B	1/4 inch FNPT by 5/64 inch Barb 60° Elbow Adapter
FEV60-6F170B	3/8 inch FNPT by .170 Barb 60° Elbow Adapter
FEV60-6F1B	3/8 inch FNPT by 1/16 inch Barb 60° Elbow Adapter
FEV60-6F2B	3/8 inch FNPT by 1/8 inch Barb 60° Elbow Adapter
FEV60-6F332B	3/8 inch FNPT by 3/32 Barb 60° Elbow Adapter
FEV60-6F532B	3/8 inch FNPT by 5/32 inch Barb 60° Elbow Adapter
FEV60-6F564B	3/8 inch FNPT by 5/64 inch Barb 60° Elbow Adapter
FEV90-2F078B	1/8 inch FNPT by .078 Barb 90° Elbow Adapter
FEV90-2F170B	1/8 inch FNPT by .170 Barb 90° Elbow Adapter
FEV90-2F1B	1/8 inch FNPT by 1/16 inch Barb 90° Elbow Adapter
FEV90-2F2B	1/8 inch FNPT by 1/8 inch Barb 90° Elbow Adapter
FEV90-2F332B	1/8 inch FNPT by 3/32 Barb 90° Elbow Adapter
FEV90-2F3B	1/8 inch FNPT by 3/16 Barb 90° Elbow Adapter
FEV90-2F4B	1/8 inch FNPT by 1/4 inch Barb 90° Elbow Adapter
FEV90-2F532B	1/8 inch FNPT by 5/32 inch Barb 90° Elbow Adapter
FEV90-2F564B	1/8 inch FNPT by 5/64 inch Barb 90° Elbow Adapter
FEV90-2F5B	1/8 inch FNPT by 5/16 inch Barb 90° Elbow Adapter
FEV90-2F6B	1/8 inch FNPT by 3/8 inch Barb 90° Elbow Adapter
FEV90-4F1B	1/4 inch FNPT by 1/16 inch Barb 90° Elbow Adapter
FEV90-4F2B	1/4 inch FNPT by 1/8 inch Barb 90° Elbow Adapter
FEV90-4F332B	1/4 inch FNPT by 3/32 Barb 90° Elbow Adapter
FEV90-4F3B	1/4 inch FNPT by 3/16 Barb 90° Elbow Adapter
FEV90-4F170B	1/4 inch FNPT by .170 Barb 90° Elbow Adapter
FEV90-4F4B	1/4 inch FNPT by 1/4 inch Barb 90° Elbow Adapter
FEV90-4F532B	1/4 inch FNPT by 5/32 inch Barb 90° Elbow Adapter
FEV90-4F564B	1/4 inch FNPT by 5/64 inch Barb 90° Elbow Adapter
FEV90-4F6B	1/4 inch FNPT by 3/8 inch Barb 90° Elbow Adapter
FEV90-6F1B	3/8 inch FNPT by 1/16 inch Barb 90° Elbow Adapter
FEV90-6F2B	3/8 inch FNPT by 1/8 inch Barb 90° Elbow Adapter

SKU	Description
FEV90-6F332B	3/8 inch FNPT by 3/32 Barb 90° Elbow Adapter
FEV90-6F3B	3/8 inch FNPT by 3/16 Barb 90° Elbow Adapter
FEV90-6F170B	3/8 inch FNPT by .170 Barb 90° Elbow Adapter
FEV90-6F4B	3/8 inch FNPT by 1/4 inch Barb 90° Elbow Adapter
FEV90-6F532B	3/8 inch FNPT by 5/32 inch Barb 90° Elbow Adapter
FEV90-6F564B	3/8 inch FNPT by 5/64 inch Barb 90° Elbow Adapter
FEV90-6F5B	3/8 inch FNPT by 5/16 inch Barb 90° Elbow Adapter
FEV90-6F6B	3/8 inch FNPT by 3/8 inch Barb 90° Elbow Adapter

## MEV SERIES



The MEV Series are brass MNPT thread with bite-style barbs at 60 degree to the flats. These elbows come in 3 different sizes of the angle between elbows – 60°, 90° and 120°. This series comes in MNPT thread sizes ranging from 1/8 inch to 3/8 inch and barb sizes ranging from 1/16 inch to 1/2 inch. Also available in Nickel-Plated Brass and 303 Stainless Steel.

SKU	Description
MEV60-2M1B	1/8 inch MNPT by 1/16 inch Barb 60° Brass Elbow
MEV60-2M2B	1/8 inch MNPT by 1/8 inch Barb 60° Brass Elbow
MEV60-2M332B	1/8 inch MNPT by 3/32 inch Barb 60° Brass Elbow
MEV60-2M3B	1/8 inch MNPT by 3/16 inch Barb 60° Brass Elbow
MEV60-2M4B	1/8 inch MNPT by 1/4 inch Barb 60° Brass Elbow
MEV60-2M532B	1/8 inch MNPT by 5/32 inch Barb 60° Brass Elbow
MEV60-2M564B	1/8 inch MNPT by 5/64 inch Barb 60° Brass Elbow
MEV60-2M5B	1/8 inch MNPT by 5/16 inch Barb 60° Brass Elbow
MEV60-2M6B	1/8 inch MNPT by 3/8 inch Barb 60° Brass Elbow
MEV60-2M732B	1/8 inch MNPT by 7/32 inch Barb 60° Brass Elbow
MEV60-2M8B	1/8 inch MNPT by 1/2 inch Barb 60° Brass Elbow
MEV60-4M170B	1/4 inch MNPT by .170 inch Barb 60° Brass Elbow
MEV60-4M1B	1/4 inch MNPT by 1/16 inch Barb 60° Brass Elbow
MEV60-4M2B	1/4 inch MNPT by 1/8 inch Barb 60° Brass Elbow
MEV60-4M332B	1/4 inch MNPT by 3/32 inch Barb 60° Brass Elbow
MEV60-4M3B	1/4 inch MNPT by 3/16 inch Barb 60° Brass Elbow
MEV60-4M4B	1/4 inch MNPT by 1/4 inch Barb 60° Brass Elbow
MEV60-4M532B	1/4 inch MNPT by 5/32 inch Barb 60° Brass Elbow
MEV60-4M564B	1/4 inch MNPT by 5/64 inch Barb 60° Brass Elbow

SKU	Description
MEV60-4M5B	1/4 inch MNPT by 5/16 inch Barb 60° Brass Elbow
MEV60-4M6B	1/4 inch MNPT by 3/8 inch Barb 60° Brass Elbow
MEV60-4M732B	1/4 inch MNPT by 7/32 inch Barb 60° Brass Elbow
MEV60-4M8B	1/4 inch MNPT by 1/2 inch Barb 60° Brass Elbow
MEV60-6M170B	3/8 inch MNPT by .170 Barb 60° Brass Elbow
MEV60-6M1B	3/8 inch MNPT by 1/16 inch Barb 60° Brass Elbow
MEV60-6M2B	3/8 inch MNPT by 1/8 inch Barb 60° Brass Elbow
MEV60-6M332B	3/8 inch MNPT by 3/32 inch Barb 60° Brass Elbow
MEV60-6M3B	3/8 inch MNPT by 3/16 inch Barb 60° Brass Elbow
MEV60-6M4B	3/8 inch MNPT by 1/4 inch Barb 60° Brass Elbow
MEV60-6M532B	3/8 inch MNPT by 5/32 inch Barb 60° Brass Elbow
MEV60-6M564B	3/8 inch MNPT by 5/64 inch Barb 60° Brass Elbow
MEV60-6M5B	3/8 inch MNPT by 5/16 inch Barb 60° Brass Elbow
MEV60-6M6B	3/8 inch MNPT by 3/8 inch Barb 60° Brass Elbow
MEV60-6M732B	3/8 inch MNPT by 7/32 inch Barb 60° Brass Elbow
MEV60-6M8B	3/8 inch MNPT by 1/2 inch Barb 60° Brass Elbow
MEV90-2M170B	1/8 inch MNPT by .170 Barb 90° Brass Elbow
MEV90-2M1B	1/8 inch MNPT by 1/16 inch Barb 90° Brass Elbow
MEV90-2M2B	1/8 inch MNPT by 1/8 inch Barb 90° Brass Elbow
MEV90-2M332B	1/8 inch MNPT by 3/32 inch Barb 90° Brass Elbow
MEV90-2M3B	1/8 inch MNPT by 3/16 inch Barb 90° Brass Elbow
MEV90-2M4B	1/8 inch MNPT by 1/4 inch Barb 90° Brass Elbow
MEV90-2M532B	1/8 inch MNPT by 5/32 inch Barb 90° Brass Elbow
MEV90-2M564B	1/8 inch MNPT by 5/16 inch Barb 90° Brass Elbow
MEV90-2M5B	1/8 inch MNPT by 5/64 inch Barb 90° Brass Elbow
MEV90-2M6B	1/8 inch MNPT by 3/8 inch Barb 90° Brass Elbow
MEV90-2M732B	1/8 inch MNPT by 7/32 inch Barb 90° Brass Elbow
MEV90-2M8B	1/8 inch MNPT by 1/2 inch Barb 90° Brass Elbow
MEV90-4M170B	1/4 inch MNPT by .170 inch Barb 90° Brass Elbow
MEV90-4M1B	1/4 inch MNPT by 1/16 inch Barb 90° Brass Elbow
MEV90-4M2B	1/4 inch MNPT by 1/8 inch Barb 90° Brass Elbow
MEV90-4M332B	1/4 inch MNPT by 3/32 inch Barb 90° Brass Elbow
MEV90-4M3B	1/4 inch MNPT by 3/16 inch Barb 90° Brass Elbow
MEV90-4M4B	1/4 inch MNPT by 1/4 inch Barb 90° Brass Elbow
MEV90-4M532B	1/4 inch MNPT by 5/32 inch Barb 90° Brass Elbow
MEV90-4M564B	1/4 inch MNPT by 5/64 inch Barb 90° Brass Elbow
MEV90-4M5B	1/4 inch MNPT by 5/16 inch Barb 90° Brass Elbow
MEV90-4M6B	1/4 inch MNPT by 3/8 inch Barb 90° Brass Elbow
MEV90-4M732B	1/4 inch MNPT by 7/32 inch Barb 90° Brass Elbow
MEV90-4M8B	1/4 inch MNPT by 1/2 inch Barb 90° Brass Elbow
MEV90-6M170B	3/8 inch MNPT by .170 Barb 90° Brass Elbow
MEV90-6M1B	3/8 inch MNPT by 1/16 inch Barb 90° Brass Elbow
MEV90-6M2B	3/8 inch MNPT by 1/8 inch Barb 90° Brass Elbow

SKU	Description
MEV90-6M332B	3/8 inch MNPT by 3/32 inch Barb 90° Brass Elbow
MEV90-6M3B	3/8 inch MNPT by 3/16 inch Barb 90° Brass Elbow
MEV90-6M4B	3/8 inch MNPT by 1/4 inch Barb 90° Brass Elbow
MEV90-6M532B	3/8 inch MNPT by 5/32 inch Barb 90° Brass Elbow
MEV90-6M564B	3/8 inch MNPT by 5/64 inch Barb 90° Brass Elbow
MEV90-6M5B	3/8 inch MNPT by 5/16 inch Barb 90° Brass Elbow
MEV90-6M6B	3/8 inch MNPT by 3/8 inch Barb 90° Brass Elbow
MEV90-6M732B	3/8 inch MNPT by 7/32 inch Barb 90° Brass Elbow
MEV90-6M8B	3/8 inch MNPT by 1/2 inch Barb 90° Brass Elbow
MEV120-2M170B	1/8 inch MNPT by .170 inch Barb 120° Brass Elbow
MEV120-2M1B	1/8 inch MNPT by 1/16 inch Barb 120° Brass Elbow
MEV120-2M2B	1/8 inch MNPT by 1/8 inch Barb 120° Brass Elbow
MEV120-2M332B	1/8 inch MNPT by 3/32 inch Barb 120° Brass Elbow
MEV120-2M3B	1/8 inch MNPT by 3/16 inch Barb 120° Brass Elbow
MEV120-2M4B	1/8 inch MNPT by 1/4 inch Barb 120° Brass Elbow
MEV120-2M532B	1/8 inch MNPT by 5/32 inch Barb 120° Brass Elbow
MEV120-2M564B	1/8 inch MNPT by 5/64 inch Barb 120° Brass Elbow
MEV120-2M5B	1/8 inch MNPT by 5/16 inch Barb 120° Brass Elbow
MEV120-2M6B	1/8 inch MNPT by 3/8 inch Barb 120° Brass Elbow
MEV120-2M732B	1/8 inch MNPT by 7/32 inch Barb 120° Brass Elbow
MEV120-2M8B	1/8 inch MNPT by 1/2 inch Barb 120° Brass Elbow
MEV120-4M170B	1/4 inch MNPT by .170 inch Barb 120° Brass Elbow
MEV120-4M1B	1/4 inch MNPT by 1/16 inch Barb 120° Brass Elbow
MEV120-4M2B	1/4 inch MNPT by 1/8 inch Barb 120° Brass Elbow
MEV120-4M332B	1/4 inch MNPT by 3/32 inch Barb 120° Brass Elbow
MEV120-4M3B	1/4 inch MNPT by 3/16 inch Barb 120° Brass Elbow
MEV120-4M4B	1/4 inch MNPT by 1/4 inch Barb 120° Brass Elbow
MEV120-4M532B	1/4 inch MNPT by 5/32 inch Barb 120° Brass Elbow
MEV120-4M564B	1/4 inch MNPT by 5/64 inch Barb 120° Brass Elbow
MEV120-4M5B	1/4 inch MNPT by 5/16 inch Barb 120° Brass Elbow
MEV120-4M6B	1/4 inch MNPT by 3/8 inch Barb 120° Brass Elbow
MEV120-4M732B	1/4 inch MNPT by 7/32 inch Barb 120° Brass Elbow
MEV120-4M8B	1/4 inch MNPT by 1/2 inch Barb 120° Brass Elbow
MEV120-6M170B	3/8 inch MNPT by .170 inch Barb 120° Brass Elbow
MEV120-6M1B	3/8 inch MNPT by 1/16 inch Barb 120° Brass Elbow
MEV120-6M2B	3/8 inch MNPT by 1/8 inch Barb 120° Brass Elbow
MEV120-6M332B	3/8 inch MNPT by 3/32 inch Barb 120° Brass Elbow
MEV120-6M3B	3/8 inch MNPT by 3/16 inch Barb 120° Brass Elbow
MEV120-6M4B	3/8 inch MNPT by 1/4 inch Barb 120° Brass Elbow
MEV120-6M532B	3/8 inch MNPT by 5/32 inch Barb 120° Brass Elbow
MEV120-6M564B	3/8 inch MNPT by 5/64 inch Barb 120° Brass Elbow
MEV120-6M5B	3/8 inch MNPT by 5/16 inch Barb 120° Brass Elbow
MEV120-6M6B	3/8 inch MNPT by 3/8 inch Barb 120° Brass Elbow





SKU	Description
MEV120-6M732B	3/8 inch MNPT by 7/32 inch Barb 120° Brass Elbow
MEV120-6M8B	3/8 inch MNPT by 1/2 inch Barb 120° Brass Elbow