



# METAL ORIFICES

## METAL ORIFICES

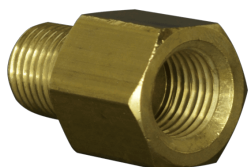
Discover the Perfect Orifice Solution at Pneuline Supply—Request Your Quote Today!



## BOE SERIES

BOE Series features a high-quality Brass 1/8 NPT Adapter, specifically designed for reliable performance in various applications. The model BOE-2M has a precise length of 15/16 inches, ensuring a secure and efficient connection. This adapter is crafted from durable brass, providing excellent resistance to corrosion and wear, making it ideal for both residential and industrial use.

---



## AMO SERIES

AMO Series are Brass or 303 Stainless Steel adapter orifices available with 10-32 UNF, 1/8", 1/4", 3/8", or 1/2" National Pipe Threads. Also, orifice sizes are .004-.125 MM, Stainless are .004-.125 MM. Used for Air, Water Gas applications up to 100 PSI. Furthermore, they are used for Speed control for cylinders and actuators. Orifices are Bi-directional flow with predictable flow rates.

---

## SHN SERIES



This product features a robust housing made from either high-quality brass or 303 stainless steels, ensuring durability and resistance to corrosion. It incorporates a synthetic sapphire orifice, which is encased in a nylon sleeve for added protection and longevity. The male NPT threads are precisely machined to a 1/8-inch size, providing a secure and reliable connection. Additionally, this product is available with an optional filter, enhancing its versatility and functionality for various applications.

---

## TBB SERIES



TBB Series is a high-quality brass tube-to-tube connector with a sapphire orifice, designed for durability and reliability in various applications. This connector features a precision-engineered sapphire orifice, which ensures optimal flow control and resistance to wear. The connector is equipped with 1/16-inch barbs, providing a secure and leak-free connection for tubing. Its robust construction and superior materials make it an excellent choice for both laboratory and industrial use.

---

## UMO SERIES



UMO Series is a 10-32 male UNF Bleed Plug of Brass or 303 Stainless Steel. Orifice sizes for the Brass are 4-35 for Stainless Steel they are 6-35. O-rings are FKM. These fittings are available with a filter on the top. For sizing reference the **Orifice Sizing Chart**

---

## USO SERIES



USO Series is a Brass Bleed Plug with a Sapphire Orifice. It has 10-32 male UNF threads and a Viton® seal. Standard orifice sizes range from .004" to .035". For sizing reference the **Orifice Sizing Chart**

---



## RAO SERIES

The RAO Series is a Round Head NPT.

For sizing reference the [Orifice Sizing Chart](#)



## DMO SERIES

DMO series is a brass or 303 Stainless Steel Orifice with a 10-32 male UNF thread by a 1/16" or 1/8" Barb. Brass orifice sizes 4-35, Stainless 6-35.

For sizing reference the [Orifice Sizing Chart](#).

---



## SHO SERIES

The Sapphire Orifice in a Nylon sleeve is housed in a Brass 10-32 male UNF to a 1/16" barb fitting. The seal is Viton®. Nickel-plated Brass is also available. For sizing reference the [Orifice Sizing Chart](#)

---



## MHO SERIES

The MHO Series is a brass or 303 Stainless Steel Hex Nipple Orifice with 1/8", 1/4", or 3/8" male NPT threads. Brass orifice sizes are 4-125, Stainless are 6-125. They are available with a filter.

For sizing reference the [Orifice Sizing Chart](#)

---

**FAOH SERIES**



The FAOH Series is a Flat Tip Hex Metal Orifice.

For sizing reference the [Orifice Sizing Chart](#)

---

**ISR SERIES**



The ISR Series is a Brass Thread Insert. For sizes visit the [Orifice Sizing Chart](#).

---

SKU		Description
10-32	.375 3/32 recessed hex	
1/4-28	.375 1/8 recessed hex	