



PUSH-TO-CONNECTS

PUSH-TO-CONNECTS

Push-to-Connect Products provided through Pneuline Supply include Acetal, Polypropylene, PVDF, PBT, 316 Stainless, Nickel Plated Brass, and Brass.



BRASS PUSH-TO-CONNECTS

BRASS PUSH-TO-CONNECTS

At Pneuline Supply, we're all about connections—fluid, precise, and oh-so-smooth. we offer Brass, Nickel-Plated Brass, and Chrome-Plated Brass Metal Push-To-Connects.



NAC SERIES - THREADED CONNECTOR

The nickel-plated brass fitting is user-friendly and ensures a secure lock when installed. The smooth stem facilitates easy tubing attachment. The opposite end features male threads and a fixed nut for tightening. The fitting has a working pressure of 217 psi and a temperature range of 4°F to 160°F.



PAM SERIES - PUSH-TO-CONNECT

The PAM Series is a push-to-connect fitting that is a compact size with a straight male hex configuration. In addition, the working pressure is 150 psi, and the temperature range is 32°F to 140°F. Nickel-plated Brass, the Buna-N O-ring, and the grip ring are Stainless Steel. Furthermore, this product is intended for use with compressed air and inert.

SKU	DESCRIPTION
PAM-10U14P	10-32 Male UNF by 1/4 OD Push-to-Connect
PAM-10U14PC	10-32 Male UNF by 1/4 OD Push-to-Connect
PAM-10U18P	10-32 Male UNF by 1/8 OD Push-to-Connect
PAM-10U316P	10-32 Male UNF by 3/16 OD Push-to-Connect
PAM-10U532P	10-32 Male UNF by 5/32 OD Push-to-Connect
PAM-10U532PC	10-32 Male UNF by 5/32 OD Push-to-Connect
PAM-1M18P	1/16 MNPT by 1/8 OD Push-to-Connect
PAM-1M532P	1/16 MNPT by 5/32 OD Push-to-Connect
PAM-1M14P	1/16 MNPT by 1/4 OD Push-to-Connect
PAM-2M2P	1/8 MNPT by 1/8 OD Push-to-Connect
PAM-2M316P	1/8 MNPT by 3/16 OD Push-to-Connect
PAM-2M14P	1/8 MNPT by 1/4 OD Push-to-Connect
PAM-2M4P	1/8 MNPT by 1/4 OD Push-to-Connect
PAM-2M516P	1/8 MNPT by 5/16 OD Push-to-Connect
PAM-2M532P	1/8 MNPT by 5/32 OD Push-to-Connect

SKU	DESCRIPTION
PAM-2M532PC	1/8 MNPT by 5/32 OD Push-to-Connect
PAM-2M38P	1/8 MNPT by 3/8 OD Push-to-Connect
PAM-2M12P	1/8 MNPT by 1/2 OD Push-to-Connect
PAM-4M18P	1/4 MNPT by 1/8 OD Push-to-Connect
PAM-4M316P	1/4 MNPT by 3/16 OD Push-to-Connect
PAM-4M14	1/4 MNPT by 1/4 OD Push-to-Connect
PAM-4M532P	1/4 MNPT by 5/32 OD Push-to-Connect 4 MM
PAM-4M3P	1/4 MNPT by 3/16 OD Push-to-Connect
PAM-4M4P	1/4 MNPT by 1/4 OD Push-to-Connect
PAM-4M516P	1/4 MNPT by 5/16 OD Push-to-Connect
PAM-4M38P	1/4 MNPT by 3/8 OD Push-to-Connect
PAM-4M6P	1/4 MNPT by 3/8 OD Push-to-Connect
PAM-4M8P	1/4 MNPT by 1/2 OD Push-to-Connect
PAM-4R-8MMP	1/4 R by 8 mm OD Push-to-Connect
PAM-5M14P	5 mm by 1/4 OD Push-to-Connect
PAM-6M532P	3/8 MNPT by 5/32 OD Push-to-Connect
PAM-6M316P	3/8 MNPT by 3/16 OD Push-to-Connect
PAM-6M3P	3/8 MNPT by 3/16 OD Push-to-Connect
PAM-6M516	3/8 MNPT by 5/16 OD Push-to-Connect
PAM-6M38	3/8 MNPT by 3/8 OD Push-to-Connect
PAM-6M4P	3/8 MNPT by 1/4 OD Push-to-Connect
PAM-6M8P	3/8 MNPT by 1/2 OD Push-to-Connect
PAM-6M12	3/8 MNPT by 1/2 OD Push-to-Connect
PAM-8M38	1/2 MNPT by 3/8 OD Push-to-Connect
PAM-8M6P	1/2 MNPT by 3/8 OD Push-to-Connect
PAM-8M8	1/2 MNPT by 1/2 OD Push-to-Connect
PAM-8M12	1/2 MNPT by 1/2 OD Push-to-Connect
PAM-8R-8MMP	1/2 R by 8 MM OD Push-to-Connect



AC SERIES

Ac Series connectors are Brass with male or female threads on one end with a nut for tightening. The other end is smooth for ease of attaching tubing. In addition, they will connect to any 10-32 threaded inlet. The OD tube sizes are 5/32", 1/4", and 3/8".

SKU

AC-10F-14S	10-32 Female UNF by 1/4 Stem Brass
AC-10F-38S	10-32 Female UNF by 3/8 Stem Brass
AC-10F-532S	10-32 Female UNF by 5/32 Stem Brass
AC-10U-14S	10-32 Male UNF by 1/4 Stem Brass
AC-10U-38S	10-32 Male UNF by 3/8 Stem Brass
AC-10U-532	10-32 Male UNF by 5/32 Stem Brass

SMRI SERIES



The SMRI Series Barbed Nickel-Plated Brass Quick Connect Plugs resist corrosion, have a maximum input pressure of 500 psi, a temperature range of -4° F to 210° F, and are designed to fit with the ***SMRC Series*** Quick Coupler bodies.

SKU

Description

SMRI-3B	3/16 inch Barbed Brass Plug
SMRI-532B	5/32 inch Barbed Brass Plug
SMRI-1032F	10-32 inch Female Brass Plug
SMRI-1032M	10-32 inch Male Brass Plug
SMRI-18B	1/8 inch Barbed Brass Plug



PBT PUSH-TO-CONNECTS

PBT PUSH TO CONNECTS

Our PBT push-to-connect fittings are available in a variety of sizes and orientations, including Ts, elbows, straights, and wyes.



PP SERIES

These PBT Plugs block off push-to-connect ports. The working pressure is 150 psi and the temperature range is 32° F to 140° F. For use with compressed air and inert gases.

SKU	DESCRIPTION
PP-12	1/2 PBT Push-to-Connect Plug
PP-14	1/4 PBT Push-to-Connect Plug
PP-316	3/16 PBT Push-to-Connect Plug
PP-38	3/8 PBT Push-to-Connect Plug
PP-516	5/16 Brass Push-to-Connect Plug
PP-532	5/32 PBT Push-to-Connect Plug
PP-6M	6 mm PBT Push-to-Connect Plug

PUM SERIES



The PUM Series is a straight line Manifold with equal or reducing push-to-connect ports. It is also available with male NPT threads on the in-port.

SKU	DESCRIPTION
PUM-14	1/4 In/Out and 3 1/4 Ports Manifold
PUM-14532	1/4 In/Out and 3 5/32 Ports Manifold
PUM-18	1/8 In/Out and 3 1/8 Ports Manifold
PUM-3814	3/8 In/Out and 3 1/4 Ports Manifold
PUM-38516	3/8 In/Out and 3 5/16 Ports Manifold
PUM-516	5/16 In/Out and 3 5/16 Ports Manifold
PUM-51614	5/16 In/Out and 3 1/4 Ports Manifold
PUM-516316	5/16 In/Out and 3 3/16 Ports Manifold
PUM-516532	5/16 In/Out and 3 5/32 Ports Manifold
PUM-532	5/32 In/Out and 3 5/32 Ports Manifold
PUM-532185	5/32 In/Out and 3 1/8 Ports Manifold
PUM-2M532	1/8 MNPT In 5/32 Out and 3 5/32 Ports Manifold

SKU	DESCRIPTION
PUM-2M532-316	1/8 MNPT In 5/32 Out and 3 3/16 Ports Manifold
PUM-4M316-516	1/4 MNPT In 5/16 Out and 3 5/16 Ports Manifold
PUM-4M516-38	1/4 MNPT In 5/16 Out and 3 3/8 Ports Manifold
PUM-4M532-14	1/4 MNPT In 5/32 Out and 3 1/4 Ports Manifold
PUM-4M532-316	1/4 MNPT in 5/32 Out and 3 3/16 Ports Manifold
PUM-4M532-516	3/8 MNPT In 1/4 Out and 3 5/16 Ports Manifold
PUM-6M14-516	3/8 MNPT In 1/4 Out and 3 5/16 Ports Manifold
PUM-8M516-38	1/2 MNPT In 5/16 Out and 3 3/8 Ports Manifold
PUMR-14532	1/4 In/out with 3- 5/32 Ports Reducer Manifold



DEFV SERIES

The DEFV series is a Push-to-Connect Flow Control Valve Elbow made with nickel-plated threads and a stem with a PBT body. Standard controls flow out but checks the flow back. Also, these valves needle the flow from the tube and check the flow back through the tubing line. They are equipped with a single push-to-connect port at a 90° angle to the male thread. Furthermore, thread sizes are 10-32, 1/8", 1/4", 3/8" and 1/2".

SKU	DESCRIPTION
DEFV-10U18P	10-32 by 1/8 OD Push-to-Connect Elbow Flow Control
DEFV-10U532P	10-32 by 5/32 OD Push-to-Connect Elbow Flow Control
DEFV-10U316P	10-32 by 3/16 OD Push-to-Connect Elbow Flow Control
DEFV-10U14P	10-32 by 1/4 OD Push-to-Connect Elbow Flow Control
DEFV-10U516P	10-32 by 5/16 OD Push-to-Connect Elbow Flow Control
DEFV-2M18P	1/8 MNPT by 1/8 OD Push-to-Connect Elbow Flow Control
DEFV-2M532P	1/8 MNPT by 5/32 OD Push-to-Connect Elbow Flow Control
DEFV-2M316P	1/8 MNPT by 3/16 OD Push-to-Connect Elbow Flow Control
DEFV-2M14P	1/8 MNPT by 1/4 OD Push-to-Connect Elbow Flow Control
DEFV-2M516P	1/8 MNPT by 5/16 OD Push-to-Connect Elbow Flow Control
DEFV-4M532P	1/4 MNPT by 5/32 OD Push-to-Connect Elbow Flow Control
DEFV-4M316P	1/4 MNPT by 3/16 OD Push-to-Connect Elbow Flow Control
DEFV-4M14P	1/4 MNPT by 1/4 OD Push-to-Connect Elbow Flow Control
DEFV-4M516P	1/4 MNPT by 5/16 OD Push-to-Connect Elbow Flow Control
DEFV-4M38P	1/4 MNPT by 3/8 OD Push-to-Connect Elbow Flow Control
DEFV-4M12P	DEFV-4M12P 1/4 MNPT by 1/2 OD Push-to-Connect Elbow Flow Control

SKU	DESCRIPTION
DEFV-6M316P	DEFV-6M316P 3/8 MNPT by 3/16 OD Push-to-Connect Elbow Flow Control
DEFV-6M14P	DEFV-6M14P 3/8 MNPT by 1/4 OD Push-to-Connect Elbow Flow Control
DEFV-6M516P	3/8 MNPT by 5/16 OD Push-to-Connect Elbow Flow Control
DEFV-6M38P	3/8 MNPT by 3/8 OD Push-to-Connect Elbow Flow Control
DEFV-6M12P	3/8 MNPT by 1/2 OD Push-to-Connect Elbow Flow Control
DEFV-8M516P	1/2 MNPT by 5/16 OD Push-to-Connect Elbow Flow Control
DEFV-8M38P	1/2 MNPT by 3/8 OD Push-to-Connect Elbow Flow Control



PUYR SERIES- PBT REDUCER

The PUYR Series is a compact Straight Wye Reducer fitting that has three push-to-connect ports in a wye pattern with two smaller ports side by side opposite the third larger port. Also, the body is PBT resin with Nickel-plated Brass threads. The working pressure is 150 psi and the temperature range is 32° F to 140° F. For use with compressed air and inert gases.

PUC SERIES



Compact Straight Fitting with two push-to-connect ports in opposite directions. The body is PBT resin. The working pressure is 150 psi and the temperature range is 32° F to 140° F. Suitable for applications involving compressed air and inert gases.

SKU	DESCRIPTION
PUC-12P	1/2 OD PBT Push-to-Connect Union
PUC-14P	1/4 OD PBT Push-to-Connect Union
PUC-18P	1/8 OD PBT Push-to-Connect Union
PUC-316P	3/16 OD PBT Push-to-Connect Union
PUC-38-P	3/8 OD PBT Push-to-Connect Union
PUC-516-P	5/16 OD PBT Push-to-Connect Union
PUC-532-P	5/32 OD PBT Push-to-Connect Union
PUC-58P	5/8 OD PBT Push-to-Connect Union
PUC-4MM-P	4 mm OD PBT Push-to-Connect Union
PUC-6MM-P	6 mm OD PBT Push-to-Connect Union
PUC-8MM-P	8 mm OD PBT Push-to-Connect Union
PUC-10MM-P	10 mm OD PBT Push-to-Connect Union
PUC-18BR	1/8 OD Brass Push-to-Connect Union

PUT SERIES- EQUAL PUSH-TO-CONNECTS



The PUT Series is a Union Tee Fitting that has 3 push-to-connect ports of equal sizes. The body is PBT resin. In addition, the working pressure is 150 psi and the temperature range is 32° F to 140° F. For use with compressed air and inert gases.

SKU	DESCRIPTION
PUT-12N	1/2 OD Push-to-Connect Tee Nylon
PUT-14P	1/4 OD PBT Push-to-Connect Tee
PUT-18P	1/8 OD PBT Push-to-Connect Tee
PUT-316P	3/16 OD PBT Push-to-Connect Tee
PUT-38-P	3/8 OD PBT Push-to-Connect Tee

SKU	DESCRIPTION
PUT-532-P	5/32 OD PBT Push-to-Connect Tee
PUT-5P	5/16 OD PBT Push-to-Connect Tee
PUT-4MM-P	4 mm OD PBT Push-to-Connect Tee
PUT-6MM-P	6 mm OD PBT Push-to-Connect Tee
PUT-8MM-P	8 mm OD PBT Push-to-Connect Tee



PUTR SERIES

Union Tee fitting with 2 push-to-connect ports of equal sizes and 1 push-to-connect port that is a reducer located 90° apart. The body is PBT resin. The working pressure is 150 psi and the temperature range is 32° F to 140° F. For use with compressed air and inert gases.

SKU	DESCRIPTION
PUTR-12-38P	1/2 OD by 3/8 OD PBT Reducing Tee
PUTR-12-516P	1/2 OD by 5/16 OD PBT Reducing Tee
PUTR-14-18P	1/4 OD by 1/8 OD PBT Reducing Tee
PUTR-14-316P	1/4 OD by 3/16 OD PBT Reducing Tee
PUTR-316-532P	3/16 OD by 5/32 OD PBT Reducing Tee
PUTR-38-14P	1/4 OD by 3/8 OD PBT Reducing Tee
PUTR-38-516P	3/8 OD by 5/16 OD PBT Reducing Tee
PUTR-4532P	1/4 OD by 5/32 OD PBT Reducing Tee
PUTR-516-14P	5/16 OD by 1/4 OD PBT Reducing Tee
PUTR-516-532P	5/16 OD by 5/32 OD PBT Reducing Tee

PUE SERIES



The PUE Series is a composite Union Elbow made of a PBT body and a Buna-N seal. The working pressure is 150 psi and a temperature range of 32° F to 140° F.

SKU	DESCRIPTION
PUE-12P	1/2 PBT Elbow Push-to-Connect
PUE-14P	1/4 PBT Elbow Push-to-Connect
PUE-18P	1/8 PBT Elbow Push-to-Connect
PUE-316P	3/16 PBT Elbow Push-to-Connect
PUE-38P	3/8 PBT Elbow Push-to-Connect
PUE-5/16-P	5/16 PBT Elbow Push-to-Connect
PUE-532P	5/32 PBT Elbow Push-to-Connect
PUE-4MM-P	4 mm PBT Elbow Push-to-Connect
PUE-6MM-P	6 mm PBT Elbow Push-to-Connect

PEA SERIES



Push-to-connect adjustable male swivel 90° Elbow with NPT and UNF threads. The working pressure is 150 psi, and the temperature range is 32° F to 140° F. This series is made of PBT resin, nickel-plated brass with a Buna-N O-ring, and a Stainless Steel grip ring. For use with compressed air and inert gases. This fitting is also available in metric sizes. In fact, these fittings can swivel a full 360°.

SKU	DESCRIPTION
PEA-10U14P	10-32 Male UNF by 1/4 OD PBT Adjustable Elbow
PEA-10U18P	10-32 Male UNF by 1/8 OD PBT Adjustable Elbow
PEA-10U316P	10-32 Male UNF by 3/16 OD PBT Adjustable Elbow
PEA-10U532P	10-32 Male UNF by 5/32 OD PBT Adjustable Elbow
PEA-2M14P	1/8 MNPT by 1/4 OD PBT Adjustable Elbow
PEA-2M18P	1/8 MNPT by 1/8 OD PBT Adjustable Elbow
PEA-2M316P	1/8 MNPT by 3/16 OD PBT Adjustable Elbow
PEA-2M516P	1/8 MNPT by 5/16 OD PBT Adjustable Elbow
PEA-2M532P	1/8 MNPT by 5/32 OD PBT Adjustable Elbow

SKU	DESCRIPTION
PEA-4M14P	1/4 MNPT by 1/4 OD PBT Adjustable Elbow
PEA-4M316P	1/4 MNPT by 3/16 OD PBT Adjustable Elbow
PEA-4M516P	1/4 MNPT by 5/16 OD PBT Adjustable Elbow
PEA-6M12P	3/8 MNPT by 1/2 OD PBT Adjustable Elbow
PEA-6M14P	3/8 MNPT by 1/4 OD PBT Adjustable Elbow
PEA-6M316P	3/8 MNPT by 3/16 OD PBT Adjustable Elbow
PEA-6M38P	3/8 MNPT by 3/8 OD PBT Adjustable Elbow
PEA-6M516P	3/8 MNPT by 5/16 OD PBT Adjustable Elbow
PEA-8M12P	1/2 MNPT by 1/2 OD PBT Adjustable Elbow
PEA-8M38P	1/2 MNPT by 3/8 OD PBT Adjustable Elbow



PEM SERIES

Push-to-connect fitting is a male compact Swivel Elbow with a hex configuration. Working pressure 150 psi, the temperature range is 32° F to 140° F. Nickel Plated Brass, Buna-N O-ring, and the grip ring is Stainless Steel. For use with compressed air and inert gases. Long stem version available. SAE and G threads have an O-ring below the hex.



PEMR SERIES

The PEMR Series is a Tee Push-to-Connect with a Metal Hex, see available options below.

SKU	DESCRIPTION
PEMR-10U18P	10-32 Male UNF by 1/8 OD PBT Male Run Tee
PEMR-10U316P	10-32 Male UNF by 3/16 OD PBT Male Run Tee
PEMR-10U14P	10-32 Male UNF by 1/4 OD PBT Male Run Tee
PEMR-10U532P	10-32 Male UNF by 5/32 OD PBT Male Run Tee
PEMR-1M18P	1/16 MNPT by 1/8 OD PBT Male Run Tee
PEMR-1M14P	1/16 MNPT by 1/4 OD PBT Male Run Tee
PEMR-1M532P	1/16 MNPT by 5/32 OD PBT Male Run Tee
PEMR-2M18P	1/8 MNPT by 1/8 OD PBT Male Run Tee
PEMR-2M316P	1/8 MNPT by 3/16 OD PBT Male Run Tee
PEMR-2M14P	1/8 MNPT by 1/4 OD PBT Male Run Tee
PEMR-2M532P	1/8 MNPT by 5/32 OD PBT Male Run Tee
PEMR-2M5P	1/8 MNPT by 5/16 OD PBT Male Run Tee
PEMR-2M38P	1/8 MNPT by 3/8 OD PBT Male Run Tee
PEMR-2M12P	1/8 MNPT by 1/2 OD PBT Male Run Tee
PEMR-4M18P	1/4 MNPT by 1/8 OD PBT Male Run Tee
PEMR-4M316P	1/4 MNPT by 3/16 OD PBT Male Run Tee
PPEMR-4M516P	1/4 MNPT by 5/16 OD PBT Male Run Tee
PEMR-4M532P	1/4 MNPT by 5/32 OD PBT Male Run Tee
PEMR-4M14P	1/4 MNPT by 1/4 OD PBT Male Run Tee
PEMR-4M38P	1/4 MNPT by 3/8 OD PBT Male Run Tee
PEMR-4M8P	1/4 MNPT by 1/2 OD PBT Male Run Tee
PEMR-6M316P	3/8 MNPT by 3/16 OD PBT Male Run Tee
PEMR-6M14P	3/8 MNPT by 1/4 OD PBT Male Run Tee
PEMR-6M38P	3/8 MNPT by 3/8 OD PBT Male Run Tee
PEMR-6M12P	3/8 MNPT by 1/2 OD PBT Male Run Tee
PEMR-8M38P	1/2 MNPT by 3/8 OD PBT Male Run Tee
PEMR-8M12P	1/2 MNPT by 1/2 OD PBT Male Run Tee

PBFC BULKHEAD SERIES



Push-to-connect female Bulkhead Union fitting with female NPT and BSPT threads. It is made of nickel-plated brass with PBT resin. The working pressure is 150 psi and the temperature range is 32° F to 140° F. It can be used with compressed air and inert gases.

SKU	DESCRIPTION
PBFC-2F-14P	1/8 FNPT by 1/4 PBT Push-to-Connect Bulkhead
PBFC-2F-316P	1/8 FNPT by 3/16 PBT Push-to-Connect Bulkhead
PBFC-2F-516P	1/8 FNPT by 5/16 PBT Push-to-Connect Bulkhead
PBFC-2F-532P	1/8 FNPT by 5/32 PBT Push-to-Connect Bulkhead
PBFC-4F-14P	1/4 FNPT by 1/4 PBT Push-to-Connect Bulkhead
PBFC-4F-316P	1/4 FNPT by 3/16 PBT Push-to-Connect Bulkhead
PBFC-4F-38P	1/4 FNPT by 3/8 PBT Push-to-Connect Bulkhead
PBFC-4F-516P	1/4 FNPT by 5/16 PBT Push-to-Connect Bulkhead
PBFC-4G6MM-P	1/4 Female BSPT by 6mm PBT Push-to-Connect Bulkhead
PBFC-4G8MM-P	1/4 Female BSPT by 8mm PBT Push-to-Connect Bulkhead
PBFC-4R6MM-P	1/4 Female BSPT by 6mm PBT Push-to-Connect Bulkhead
PBFC-4R8MM-P	1/4 Female BSPT by 8mm PBT Push-to-Connect Bulkhead
PBFC-6F-516P	3/8 FNPT by 5/16 PBT Push-to-Connect Bulkhead
PBFC-6F-6P	3/8 FNPT by 3/8 PBT Push-to-Connect Bulkhead
PBFC-6F-8P	3/8 FNPT by 1/2 PBT Push-to-Connect Bulkhead
PBFC-6G6MM-P	3/8 Female BSPT by 6mm PBT Push-to-Connect Bulkhead

PEMT SERIES



Push-to-connect Male Branch Swivel Tee with male NPT and UNF threads. The working pressure is 150 psi, and the temperature range is 32° F to 140° F. Also, this series is made of PBT resin, Nickel nickel-plated brass with a Buna-N O-ring, and a Stainless Steel grip ring. For use with compressed air and inert gases. This fitting is also available in metric sizes.

SKU	DESCRIPTION
PEMT-10U14P	10-32 Male UNF by 1/4 OD PBT Tee
PEMT-10U18P	10-32 Male UNF by 1/8 OD PBT Tee
PEMT-10U316P	10-32 Male UNF by 3/16 OD PBT Tee
PEMT-10U532P	10-32 Male UNF by 5/32 OD PBT Tee
PEMT-1M14P	1/16 MNPT by 1/4 OD PBT Tee
PEMT-1M18P	1/16 MNPT by 1/8 OD PBT Tee
PEMT-1M532P	1/16 MNPT by 5/32 OD PBT Tee
PEMT-2M14P	1/8 MNPT by 1/4 OD PBT Tee
PEMT-2M18P	1/8 MNPT by 1/8 OD PBT Tee
PEMT-2M316P	1/8 MNPT by 3/16 OD PBT Tee
PEMT-2M38P	1/8 MNPT by 3/8 OD PBT Tee
PEMT-2M516P	1/8 MNPT by 5/16 OD PBT Tee
PEMT-2M532P	1/8 MNPT by 5/32 OD PBT Tee
PEMT-4M12P	1/4 MNPT by 1/2 OD PBT Tee
PEMT-4M14P	1/4 MNPT by 1/4 OD PBT Tee
PEMT-4M18P	1/4 MNPT by 1/8 OD PBT Tee
PEMT-4M12P	1/4 MNPT by 1/2 OD PBT Tee
PEMT-4M14P	1/4 MNPT by 1/4 OD PBT Tee
PEMT-4M18P	1/4 MNPT by 1/8 OD PBT Tee
PEMT-4M316P	1/4 MNPT by 3/16 OD PBT Tee
PEMT-4M38P	1/4 MNPT by 3/8 OD PBT Tee
PEMT-4M516P	1/4 MNPT by 5/16 OD PBT Tee
PEMT-4M532P	1/4 MNPT by 5/32 OD PBT Tee
PEMT-4R-4MM	1/4 R MNPT by 4 mm OD PBT Tee
PEMT-4R-6MM	1/4 R MNPT by 6 mm OD PBT Tee
PEMT-4R-8MM	1/4 R MNPT by 8 mm OD PBT Tee
PEMT-6M12P	3/8 MNPT by 1/2 OD PBT Tee
PEMT-6M14P	3/8 MNPT by 1/4 OD PBT Tee
PEMT-6M316P	3/8 MNPT by 3/16 OD PBT Tee
PEMT-6M38P	3/8 MNPT by 3/8 OD PBT Tee
PEMT-8M12P	1/2 MNPT by 1/2 OD PBT Tee

SKU	DESCRIPTION
PEMT-8M38P	1/2 MNPT by 3/8 OD PBT Tee
PEMT-8R-8MM	1/2 R MNPT by 8 mm OD PBT Tee



PSR SERIES

The PSR Series is a PBT Stem Reducer. Not for water applications, only air. The working pressure is 150 psi and the temperature range is 32° F to 140° F.

SKU	DESCRIPTION
PSR-12S-38P	1/2 by 3/8 PBT Stem Reducer
PSR-12S-516P	1/2 by 5/16 PBT Stem Reducer
PSR-14S-18P	1/4 by 1/8 PBT Stem Reducer
PSR-14S-316P	1/4 by 3/16 PBT Stem Reducer
PSR-14S-532P	1/4 by 5/32 PBT Stem Reducer
PSR-316S-18P	3/16 by 1/8 PBT Stem Reducer
PSR-316S-532P	3/16 by 5/32 PBT Stem Reducer
PSR-38S-14P	3/8 by 1/4 PBT Stem Reducer
PSR-38S-516P	3/8 by 5/16 PBT Stem Reducer
PSR-516S-14P	5/16 by 1/4 PBT Stem Reducer
PSR-532S-18P	5/32 by 1/8 PBT Stem Reducer

PSC SERIES



PEM45 SERIES- PUSH-TO-CONNECT



The PEM45 Series is a male push-to-connect fitting configured with a 45° elbow. The working pressure is 150 psi and the temperature range is 32° F to 140° F. Also, the metal body material is Nickel-plated Brass and the resin is PBT. This product is intended for use with compressed air and inert gases.

SKU	DESCRIPTION
PEM45-10U18P	PEM45 10-32 Male UNF by 1/8 OD PBT Elbow
PEM45-10U316P	PEM45 10-32 Male UNF by 3/16 OD PBT Elbow
PEM45-10U14P	PEM45 10-32 Male UNF by 1/4 OD PBT Elbow
PEM45-10U532P	PEM45 10-32 Male UNF by 5/32 OD PBT Elbow
PEM45-2M18P	PEM45 1/8 MNPT by 1/8 OD PBT Elbow
PEM45-2M316P	PEM45 1/8 MNPT by 3/16 OD PBT Elbow
PEM45-2M14P	PEM45 1/8 MNPT by 1/4 OD PBT Elbow
PEM45-2M516P	PEM45 1/8 MNPT by 5/16 OD PBT Elbow
PEM45-2M532P	PEM45 1/8 MNPT by 5/32 OD PBT Elbow
PEM45-2M38P	PEM45 1/8 MNPT by 3/8 OD PBT Elbow
PEM45-4M14P	PEM45 1/4 MNPT by 1/4 OD PBT Elbow
PEM45-4M516P	PEM45 1/4 MNPT by 5/16 OD PBT Elbow
PEM45-4M38P	PEM45 1/4 MNPT by 3/8 OD PBT Elbow
PEM45-4M12P	PEM45 1/4 MNPT by 1/2 OD PBT Elbow
PEM45-6M14P	PEM45 3/8 MNPT by 1/4 OD PBT Elbow

SKU	DESCRIPTION
PEM45-6M516P	PEM45 3/8 MNPT by 5/16 OD PBT Elbow
PEM45-6M38P	PEM45 3/8 MNPT by 3/8 OD PBT Elbow
PEM45-6M12P	PEM45 3/8 MNPT by 1/2 OD PBT Elbow
PEM45-8M14P	PEM45 1/2 MNPT by 1/4 OD PBT Elbow
PEM45-8M38P	PEM45 1/2 MNPT by 3/8 OD PBT Elbow
PEM45-8M12P	PEM45 1/2 MNPT by 1/2 OD PBT Elbow



PUCX SERIES

PUCX Series is a union Cross push-to-connect fitting with four opposing, equal-sized ports made of Polybutylene. This fitting is also available in metric sizes.

SKU	DESCRIPTION
PUCX-12P	1/2 OD Cross Polybutylene
PUCX-14P	1/4 OD Cross Polybutylene
PUCX-18P	1/8 OD Cross Polybutylene
PUCX-316P	3/16 OD Cross Polybutylene
PUCX-38P	3/8 OD Cross Polybutylene
PUCX-516P	5/16 Cross Polybutylene
PUCX-532P	5/32 Cross Polybutylene
PUCX-1238P	3/8 by 1/2 OD Cross Polybutylene
PUCX-38516P	5/16 by 3/8 OD Cross Polybutylene



PUY SERIES- PUSH-TO-CONNECT

Compact straight fitting with three push-to-connect ports in a Wye pattern with two ports side by side opposite the third port. The body is PBT resin with Nickel-Plated Brass threads. The working pressure is 150 psi and the temperature range is 32° F to 140° F. For use with compressed air and inert gases.

SKU	DESCRIPTION
PUY-12P	1/2 OD Parallel PBT Wye
PUY-14P	1/4 OD Parallel PBT Wye
PUY-18P	1/8 OD Parallel PBT Wye
PUY-316P	3/16 OD Parallel PBT Wye
PUY-38P	3/8 OD Parallel PBT Wye
PUY-516P	5/16 OD Parallel PBT Wye
PUY-532P	5/32 OD Parallel PBT Wye



PEFC SERIES

The PEFC Series is a push-to-connect Swivel Female Elbow that is configured with a 90° body **with an external hex for tightening**. The working pressure is 150 psi and the temperature range is 32° F to 140° F. Metal body material is Nickel-Plated Brass and the resin is PBT. For use with compressed air and inert gases.

SKU	DESCRIPTION
PEFC-10U14P	10-32 Female UNF by 1/4 OD Push-to-Connect Elbow
PEFC-10U18P	10-32 Female UNF by 1/8 OD Push-to-Connect Elbow
PEFC-10U316P	10-32 Female UNF by 3/16 OD Push-to-Connect Elbow
PEFC-10U532P	10-32 Female UNF by 5/32 OD Push-to-Connect Elbow
PEFC-2F18P	1/8 FNPT by 1/8 OD Push-to-Connect Elbow
PEFC-2F316P	1/8 FNPT by 3/16 OD Push-to-Connect Elbow
PEFC-2F14P	1/8 FNPT by 1/4 OD Push-to-Connect Elbow
PEFC-2F38P	1/8 FNPT by 3/8 OD Push-to-Connect Elbow
PEFC-2F4P	1/8 FNPT by 1/4 OD Push-to-Connect Elbow

SKU	DESCRIPTION
PEFC-2F516P	1/8 FNPT by 5/16 OD Push-to-Connect Elbow
PEFC-2F532P	1/8 FNPT by 5/32 OD Push-to-Connect Elbow
PEFC-4F18P	1/4 FNPT by 1/8 OD Push-to-Connect Elbow
PEFC-4F316P	1/4 FNPT by 3/16 OD Push-to-Connect Elbow
PEFC-4F14P	1/4 FNPT by 1/4 OD Push-to-Connect Elbow
PEFC-4F516P	1/4 FNPT by 5/16 OD Push-to-Connect Elbow
PEFC-4F532P	1/4 FNPT by 5/32 OD Push-to-Connect Elbow
PEFC-4F6P	1/4 FNPT by 3/8 OD Push-to-Connect Elbow
PEFC-4F8P	1/4 FNPT by 1/2 OD Push-to-Connect Elbow
PEFC-6F316P	3/8 FNPT by 3/16 OD Push-to-Connect Elbow
PEFC-6F14P	3/8 FNPT by 1/4 OD Push-to-Connect Elbow
PEFC-6F516P	3/8 FNPT by 5/16 OD Push-to-Connect Elbow
PEFC-6F38P	3/8 FNPT by 3/8 OD Push-to-Connect Elbow
PEFC-6F12P	3/8 FNPT by 1/2 OD Push-to-Connect Elbow
PEFC-8F38P	1/2 FNPT by 3/8 OD Push-to-Connect Elbow
PEFC-8F12P	1/2 FNPT by 1/2 OD Push-to-Connect Elbow

PPF SERIES



The PPF Series is a push-to-connect cap for use with all push-to-connect fittings to block a port. The body is PBT with a Buna-N O-Ring. This fitting is also available in metric sizes.

SKU	Description
PPF-14	1/4 inch PBT Push-to-Connect Cap
PPF-38	3/8 inch PBT Push-to-Connect Cap
PPF-532	5/32 inch PBT Push-to-Connect Cap



PLASTIC PUSH-TO-CONNECTS

PLASTIC PUSH-TO-CONNECT

Acetal Plastic Fittings are used in food & beverage, pure water, air and inert gases applications as well as able to withstand a full vacuum. Acetal has a temperature range of 33°F to 158°F and a working pressure 150 psi at 73°F for 3/8" - 1/2" and 230 psi at 73°F for 5/32" - 5/16".

Polypropylene Plastic Fittings are chemically resistant and can withstand a full vacuum but unsuitable for compressed air. They have a temperature range of 33°F to 140°F with working pressures of 150 psi at 70°F and 60 psi at 140°F.

Kynar® (PVDF) Plastic Fittings are chemically resistant to highly corrosive fluids and is NSF 51 listed with a maximum temperature of 275°F and working pressure of 300 psi.

All three materials meet FDA standards and are NSF listed.

LTC SERIES - CLIPS



Acetal Clips are used with push-in fittings to secure the tubing from disconnecting. Used with Acetal and Polypropylene push-to-connect fittings in the food and beverage industry. for water and beverage dispensing. The outside dimensions of the tubing for these clips are 1/4", 5/16", 3/8", and 1/2". The temperature range is -4° F to 150° F. The pressure range is 145 psi to 230 psi. They are available in various colors; Red or Blue, also in metric sizes.

SKU	DESCRIPTION
LTC-3B	3/16" OD Acetal Locking Clip
LTC-4B	1/4" OD Acetal Locking Clip
LTC-5B	5/16" OD Acetal Locking Clip
LTC-6B	3/8" OD Acetal Locking Clip
LTC-8B	1/2" OD Acetal Locking Clip
LTC-5M	5 mm OD Acetal Locking Clip
LTC-8M	8 mm OD Acetal Locking Clip
LTC-10M	10 mm OD Acetal Locking Clip
LTC-12M	12 mm OD Acetal Locking Clip
LTC-15M	15 mm OD Acetal Locking Clip



PFE SERIES

PFE Series is a Push-to-connect fitting to a female pipe thread (FNPT) in a Fixed Elbow configuration. Also, push-to-connect sizes range from 1/4" or 3/8" with female pipe threads of 3/8" or 1/4". This fitting is available in gray Acetal, PVDF, and white Polypropylene. It is suitable for liquids and inert gases.

SKU	DESCRIPTION
PFE-4F4	1/4 FNPT by 1/4 OD Elbow Push-to-Connect Elbow
PFE-6F4	3/8 FNPT by 1/4 OD Elbow Push-to-Connect Elbow
PFE-6F6	3/8 FNPT by 3/8 OD Elbow Push-to-Connect Elbow



PFF SERIES

The PFF Series is a push-to-connect to female 7/16-20 or 5/8-18 Flare thread is a Straight Connection, for use in faucet applications. Push-to-connect sizes available in 3/8", 5/16" or 1/4". This product is available in Polypropylene and PVDF.

SKU	DESCRIPTION
PFF-7164	7/16-24 Female UNS Flare by 1/4 OD Faucet Fitting
PFF-7165	7/16-24 Female UNS Flare by 5/16 OD Faucet Fitting
PFF-7166	7/16-24 Female UNS Flare by 3/8 OD Faucet Fitting



PMR SERIES

PMR Series Male NPT to Push-to-Connect Swivel Tee connector configuration available in Acetal and select sizes in Polypropylene, and Kynar®. Push-to-Connect sizes range from 5/32 inch to 1/2 inch and Threads range from 1/2 inch MNPT to 1/8 inch MNPT. This is a swivel tee configuration using the **PT Series** and the **PSM Series** fittings. Gray or White Acetal are NSF and FDA-approved and have Buna seals for air, gases, and potable water applications. White Polypropylene with EPDM seals or PVDF with FKM seals. Maximum temperature 140°F at 60 psi for Polypropylene.

SKU	Description
PMR-2M4-GA	1/8 inch Male NPT by 1/4 inch Gray Acetal Male Run Tee Push-in
PMR-2M4-K	1/8 inch Male NPT by 1/4 inch PVDF Male Run Tee Push-in
PMR-2M4-PP	1/8 inch Male NPT by 1/4 inch Natural Polypropylene Male Run Tee Push-in
PMR-2M4-WA	1/8 inch Male NPT by 1/4 inch White Acetal Male Run Tee Push-in
PMR-2M532-GA	1/8 inch Male NPT by 5/32 inch Gray Acetal Male Run Tee Push-in
PMR-2M532-WA	1/8 inch Male NPT by 5/32 inch White Acetal Male Run Tee Push-in
PMR-2M5-GA	1/8 inch Male NPT by 5/16 inch Gray Acetal Male Run Tee Push-in
PMR-2M5-WA	1/8 inch Male NPT by 5/16 inch White Acetal Male Run Tee Push-in
PMR-4M4-GA	1/4 inch Male NPT by 1/4 inch Gray Acetal Male Run Tee Push-in
PMR-4M4-K	1/4 inch Male NPT by 1/4 inch PVDF Male Run Tee Push-in
PMR-4M4-PP	1/4 inch Male NPT by 1/4 inch Natural Polypropylene Male Run Tee Push-in
PMR-4M4-WA	1/4 inch Male NPT by 1/4 inch White Acetal Male Run Tee Push-in
PMR-4M532-GA	1/4 inch Male NPT by 5/32 inch Gray Acetal Male Run Tee Push-in
PMR-4M532-WA	1/4 inch Male NPT by 5/32 inch White Acetal Male Run Tee Push-in
PMR-4M5-GA	1/4 inch Male NPT by 5/16 inch Gray Acetal Male Run Tee Push-in
PMR-4M5-WA	1/4 inch Male NPT by 5/16 inch White Acetal Male Run Tee Push-in
PMR-4M6-GA	1/4 inch Male NPT by 3/8 inch Gray Acetal Male Run Tee Push-in
PMR-4M6-K	1/4 inch Male NPT by 3/8 inch PVDF Male Run Tee Push-in
PMR-4M6-PP	1/4 inch Male NPT by 3/8 inch Natural Polypropylene Male Run Tee Push-in
PMR-4M6-WA	1/4 inch Male NPT by 3/8 inch White Acetal Male Run Tee Push-in
PMR-4M8-GA	1/4 inch Male NPT by 1/2 inch Gray Acetal Male Run Tee Push-in
PMR-4M8-WA	1/4 inch Male NPT by 1/2 inch White Acetal Male Run Tee Push-in
PMR-6M5-GA	3/8 inch Male NPT by 5/16 inch Gray Acetal Male Run Tee Push-in
PMR-6M5-WA	3/8 inch Male NPT by 5/16 inch White Acetal Male Run Tee Push-in
PMR-6M6-GA	3/8 inch Male NPT by 3/8 inch Gray Acetal Male Run Tee Push-in
PMR-6M6-K	3/8 inch Male NPT by 3/8 inch PVDF Male Run Tee Push-in

SKU	Description
PMR-6M6-PP	3/8 inch Male NPT by 3/8 inch Natural Polypropylene Male Run Tee Push-in
PMR-6M6-WA	3/8 inch Male NPT by 3/8 inch White Acetal Male Run Tee Push-in
PMR-6M8-GA	3/8 inch Male NPT by 1/2 inch Gray Acetal Male Run Tee Push-in
PMR-6M8-WA	3/8 inch Male NPT by 1/2 inch White Acetal Male Run Tee Push-in
PMR-8M8-GA	1/2 inch Male NPT by 1/2 inch Gray Acetal Male Run Tee Push-in
PMR-8M8-WA	1/2 inch Male NPT by 1/2 inch White Acetal Male Run Tee Push-in



PMT SERIES

PMT Series Push-to-Connect Tee to Male NPT connectors are available in Acetal and select sizes in Polypropylene, and Kynar®. Push-to-Connect sizes range from 5/32 inch to 1/2 inch and Threads range from 1/2 inch MNPT to 1/8 inch MNPT. This swivel tee configuration uses the **PT Series** and **PSM Series** fittings. Gray or White Acetal are NSF and FDA-approved and have Buna seals for air, gases, and potable water applications. White Polypropylene with EPDM seals or PVDF with FKM seals. Maximum temperature 140°F at 60 psi for Polypropylene.

SKU	Description
PMT-2M3-GA	1/8 inch Male NPT by 3/16 inch OD Gray Acetal Tee Push-in
PMT-2M3-WA	1/8 inch Male NPT by 3/16 inch OD White Acetal Tee Push-in
PMT-2M4-GA	1/8 inch Male NPT by 1/4 inch OD Gray Acetal Tee Push-in
PMT-2M4-K	1/8 inch Male NPT by 1/4 inch OD PVDF Tee Push-in
PMT-2M4-WA	1/8 inch Male NPT by 1/4 inch OD White Acetal Tee Push-in
PMT-2M532-GA	1/8 inch Male NPT by 5/32 inch OD Gray Acetal Tee Push-in
PMT-2M532-WA	1/8 inch Male NPT by 5/32 inch OD White Acetal Tee Push-in
PMT-2M5-GA	1/8 inch Male NPT by 5/16 inch OD Gray Acetal Tee Push-in
PMT-2M5-WA	1/8 inch Male NPT by 5/16 inch OD White Acetal Tee Push-in
PMT-2M6-GA	1/8 inch Male NPT by 3/8 inch OD Gray Acetal Tee Push-in
PMT-2M6-K	1/8 inch Male NPT by 3/8 inch OD PVDF Tee Push-in
PMT-2M6-WA	1/8 inch Male NPT by 3/8 inch OD White Acetal Tee Push-in
PMT-4M4-GA	1/4 inch Male NPT by 1/4 inch OD Gray Acetal Tee Push-in
PMT-4M4-K	1/4 inch Male NPT by 1/4 inch OD PVDF Tee Push-in
PMT-4M4-WA	1/4 inch Male NPT by 1/4 inch OD White Acetal Tee Push-in
PMT-4M532-GA	1/4 inch Male NPT by 5/32 inch OD Gray Acetal Tee Push-in
PMT-4M532-WA	1/4 inch Male NPT by 5/32 inch OD White Acetal Tee Push-in
PMT-4M5-GA	1/4 inch Male NPT by 5/16 inch OD Gray Acetal Tee Push-in

SKU	Description
PMT-4M5-WA	1/4 inch Male NPT by 5/16 inch OD White Acetal Tee Push-in
PMT-4M6-GA	1/4 inch Male NPT by 3/8 inch OD Gray Acetal Tee Push-in
PMT-4M6-K	1/4 inch Male NPT by 3/8 inch OD PVDF Tee Push-in
PMT-4M6-PP	1/4 inch Male NPT by 3/8 inch OD Polypropylene Tee Push-in
PMT-4M6-WA	1/4 inch Male NPT by 3/8 inch OD White Acetal Tee Push-in
PMT-4M8-GA	1/4 inch Male NPT by 1/2 inch OD Gray Acetal Tee Push-in
PMT-4M8-PP	1/4 inch Male NPT by 1/2 inch OD Polypropylene Tee Push-in
PMT-4M8-WA	1/4 inch Male NPT by 1/2 inch OD White Acetal Tee Push-in
PMT-6M5-GA	3/8 inch Male NPT by 5/16 inch OD Gray Acetal Tee Push-in
PMT-6M5-PP	3/8 inch Male NPT by 5/16 inch OD Polypropylene Tee Push-in
PMT-6M5-WA	3/8 inch Male NPT by 5/16 inch OD White Acetal Tee Push-in
PMT-6M6-GA	3/8 inch Male NPT by 3/8 inch OD Gray Acetal Tee Push-in
PMT-6M6-K	3/8 inch Male NPT by 3/8 inch OD PVDF Tee Push-in
PMT-6M6-PP	3/8 inch Male NPT by 3/8 inch OD Polypropylene Tee Push-in
PMT-6M6-WA	3/8 inch Male NPT by 3/8 inch OD White Acetal Tee Push-in
PMT-6M8-GA	3/8 inch Male NPT by 1/2 inch OD Gray Acetal Tee Push-in
PMT-6M8-WA	3/8 inch Male NPT by 1/2 inch OD White Acetal Tee Push-in
PMT-8M8-GA	1/2 inch Male NPT by 1/2 inch OD Gray Acetal Tee Push-in
PMT-8M8-PP	1/2 inch Male NPT by 1/2 inch OD Polypropylene Tee Push-in
PMT-8M8-WA	1/2 inch Male NPT by 1/2 inch OD White Acetal Tee Push-in



PMES SERIES

PMES Series Push-to-Connect to Male NPT Swivel Elbow connectors are available in Acetal and select sizes in Polypropylene, and Kynar®. Push-to-Connect sizes range from 5/32 inch to 1/2 inch and Threads range from 1/2 inch MNPT to 1/8 inch MNPT. Gray or White Acetal are NSF and FDA-approved and have Buna seals for air, gases, and potable water applications. White Polypropylene with EPDM seals or PVDF with FKM seals. Maximum temperature 140°F at 60 psi for Polypropylene. For non-swivel elbows see [PME Series](#).

SKU	Description
PMES-2M4	1/8 MNPT by 1/4 OD Swivel Elbow Push-to-Connect
PMES-2M532	1/8 MNPT by 5/32 OD Swivel Elbow Push-to-Connect
PMES-2M5	1/8 MNPT by 5/16 OD Swivel Elbow Push-to-Connect
PMES-2M6	1/8 MNPT by 3/8 OD Swivel Elbow Push-to-Connect
PMES-4M4	1/4 MNPT by 1/4 OD Swivel Elbow Push-to-Connect

SKU	Description
PMES-4M532	1/4 MNPT by 5/32 OD Swivel Elbow Push-to-Connect
PMES-4M5	1/4 MNPT by 5/16 OD Swivel Elbow Push-to-Connect
PMES-4M6	1/4 MNPT by 3/8 OD Swivel Elbow Push-to-Connect
PMES-4M8	1/4 MNPT by 1/2 OD Swivel Elbow Push-to-Connect
PMES-6M4	3/8 MNPT by 1/4 OD Swivel Elbow Push-to-Connect
PMES-6M5	3/8 MNPT by 5/16 OD Swivel Elbow Push-to-Connect
PMES-6M6	3/8 MNPT by 3/8 OD Swivel Elbow Push-to-Connect
PMES-6M8	3/8 MNPT by 1/2 OD Swivel Elbow Push-to-Connect
PMES-8M8	1/2 MNPT by 1/2 OD Swivel Elbow Push-to-Connect



PF SERIES

Push-to-Connect to Female NPT Straight connectors available in Acetal, Polypropylene, and Kynar® used to join Polyethylene, Brass, or Copper tubing. Push-to-Connect sizes range from 1/2 inch to 1/4 inch and Thread sizes range from 1/2 FNPT to 1/8 inch FNPT. Gray or White Acetal are NSF and FDA-approved and have Buna seals for air, gases, and potable water applications. White Polypropylene with EPDM seals or PVDF with FKM seals. Maximum temperature 140°F at 60 psi for Polypropylene.

SKU	Description
PF-2F4	1/8 FNPT by 1/4 OD Straight Push-to-Connect
PF-4F4	1/4 FNPT by 1/4 OD Straight Push-to-Connect
PF-4F5	1/4 FNPT by 5/16 OD Straight Push-to-Connect
PF-4F6	1/4 FNPT by 3/8 OD Straight Push-to-Connect
PF-6F5	3/8 FNPT by 5/16 OD Straight Push-to-Connect
PF-6F6	3/8 FNPT by 3/8 OD Straight Push-to-Connect
PF-6F8	3/8 FNPT by 1/2 OD Straight Push-to-Connect



PME SERIES

The PME Series Male Thread to Push-to-Connect Elbow connectors are available in Acetal and select sizes in Polypropylene, and PVDF. Push-in sizes range from 1/4 inch to 3/8 inch and Threads range from 3/8 inch MNPT to 1/8 inch MNPT. In addition, the Gray or White Acetal are NSF and FDA-approved and have Buna seals for air, gases, and potable water applications. White Polypropylene with EPDM seals or PVDF with FKM seals. Furthermore, the Maximum temperature is 140°F at 60 psi for Polypropylene.

SKU	Description
PME-2M4	1/8 MNPT by 1/4 OD Push-to-Connect Elbow
PME-4M4	1/4 MNPT by 1/4 OD Push-to-Connect Elbow
PME-4M5	1/4 MNPT by 5/16 OD Push-to-Connect Elbow
PME-4M6	1/4 MNPT by 3/8 OD Push-to-Connect Elbow
PME-6M4	3/8 MNPT by 1/4 OD Push-to-Connect Elbow
PME-6M5	3/8 MNPT by 5/16 OD Push-to-Connect Elbow
PME-6M6	3/8 MNPT by 3/8 OD Push-to-Connect Elbow
PME-6M8	3/8 MNPT by 1/2 OD Push-to-Connect Elbow



PM CONNECTOR SERIES

PM Series Straight Male Thread to Push-to-Connect connectors are available in Acetal and select sizes in Polypropylene, and Kynar®. Push-in sizes range from 5/32 inch to 5/8 inch and Threads range from 3/4 inch MNPT to 1/8 inch MNPT. Gray or White Acetal are NSF and FDA-approved and have Buna seals for air, gases, and potable water applications. White Polypropylene with EPDM seals or PVDF with FKM seals. Maximum temperature 140°F at 60 psi for Polypropylene.

SKU	Description
PM-12M10	3/4 MNPT by 5/8 OD Straight Push-to-Connect
PM-2M3	1/8 MNPT by 3/16 OD Straight Push-to-Connect
PM-2M4	1/8 MNPT by 1/4 OD Straight Push-to-Connect
PM-2M532	1/8 MNPT by 5/32 OD Straight Push-to-Connect

SKU	Description
PM-2M5	1/8 MNPT by 5/16 OD Straight Push-to-Connect
PM-2M6	1/8 MNPT by 3/8 OD Straight Push-to-Connect
PM-4BSPT6	1/4 BSPT by 3/8 OD Straight Push-to-Connect
PM-4M4	1/4 MNPT by 1/4 OD Straight Push-to-Connect
PM-4M532	1/4 MNPT by 5/32 OD Straight Push-to-Connect
PM-4M5	1/4 MNPT by 5/16 OD Straight Push-to-Connect
PM-4M6	1/4 MNPT by 3/8 OD Straight Push-to-Connect
PM-6M4	3/8 MNPT by 1/4 OD Straight Push-to-Connect
PM-6M5	3/8 MNPT by 5/16 OD Straight Push-to-Connect
PM-6M6	3/8 MNPT by 3/8 OD Straight Push-to-Connect
PM-6M8	3/8 MNPT by 1/2 OD Straight Push-to-Connect
PM-8M6	1/2 MNPT by 3/8 OD Straight Push-to-Connect
PM-8M8	1/2 MNPT by 1/2 OD Straight Push-to-Connect



PSM PIPE CONNECTOR SERIES

Stem connector to Male Pipe Thread Fittings can be added to a Female Pipe Thread port. The stem allows for adding a Push-to-Connect connector to create Tees, Elbows, Wyes, and Crosses. Can also be used to create Male to Male Pipe or Male to Female Pipe connections. These units allow the connection to Swivel. Acetal, Polypropylene, and Kynar® can be added to a Push-to-Connect connector to terminate in a barbed connection for use with Polyethylene, Vinyl, or braided Vinyl tubing. Stem sizes range from 1/2 inch to 5/32 inch with Pipe Threads ranging from 1/2 inch NPT to 1/8 inch NPT (See PMES, PMT, and PMR Series for examples.). Gray or White Acetal are NSF and FDA-approved and have Buna seals for use in air, gases, and potable water applications. White Polypropylene with EPDM seals or PVDF with FKM seals. Maximum temperature 140°F at 60 psi for Polypropylene.

SKU	Description
PSM-2M3-GA	1/8 MNPT by 3/16 OD Push-to-Connect Stem
PSM-2M4-GA	1/8 MNPT by 1/4 OD Push-to-Connect Stem
PSM-2M532-GA	1/8 MNPT by 5/32 OD Push-to-Connect Stem
PSM-2M5-GA	1/8 MNPT by 5/16 OD Push-to-Connect Stem
PSM-4M4-GA	1/4 MNPT by 1/4 OD Push-to-Connect Stem
PSM-4M532-GA	1/4 MNPT by 5/32 OD Push-to-Connect Stem
PSM-4M5-GA	1/4 MNPT by 5/16 OD Push-to-Connect Stem
PSM-4M6-GA	1/4 MNPT by 3/8 OD Push-to-Connect Stem

SKU	Description
PSM-4M8-GA	1/4 MNPT by 1/2 OD Push-to-Connect Stem
PSM-6M4-GA	3/8 MNPT by 1/4 OD Push-to-Connect Stem
PSM-6M5-GA	3/8 MNPT by 5/16 OD Push-to-Connect Stem
PSM-6M6-GA	3/8 MNPT by 3/8 OD Push-to-Connect Stem

PEB SERIES



The PEB Series Stem connector to Elbow Barbed Fittings comes in Acetal, Polypropylene, and Kynar® which can be added to a Push-to-Connect connector to terminate in a barbed connection for use with Polyethylene, Vinyl, or braided Vinyl tubing. Stem sizes range from 1/2 inch to 1/4 inch reducing to a 1/4 inch Barbed Fitting. Gray or White Acetal are NSF and FDA-approved and have Buna seals for air, gases, and potable water applications. White Polypropylene with EPDM seals or PVDF with FKM seals. Maximum temperature 140°F at 60 psi for Polypropylene.

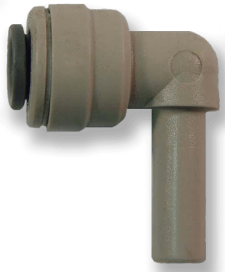
SKU	Description
PEB-4	1/4 OD Stem by 1/4 Barb Elbow
PEB-4S5	1/4 OD Stem by 5/16 Barb Elbow
PEB-5	5/16 OD Stem by 5/16 Barb Elbow
PEB-5S4	5/16 OD Stem by 1/4 Barb Elbow
PEB-5S5	5/16 OD Stem by 5/16 Barb Elbow
PEB-6	3/8 OD Stem by 3/8 Barb Elbow
PEB-6S4	3/8 OD Stem by 1/4 Barb Elbow
PEB-6S5	3/8 OD Stem by 5/16 Barb Elbow



PSB SERIES

Stem connector to Barbed Fittings Acetal, Polypropylene, and Kynar® can be added to a Push-to-Connect connector to terminate in a barbed connection for use with Polyethylene, Vinyl, or braided Vinyl tubing. Stem sizes range from 1/2 inch to 1/4 inch reducing to a 1/4 inch Barbed Fitting. Gray or White Acetal are NSF and FDA-approved and have Buna seals for use in air, gases, and potable water applications. White Polypropylene with EPDM seals or PVDF with FKM seals. Maximum temperature 140°F at 60 psi for Polypropylene.

SKU	Description
PSB-4-GA	1/4 inch Stem by 1/4 inch Barb Gray Acetal Push-in
PSB-4-K	1/4 inch Stem by 1/4 inch Barb PVDF Push-in
PSB-4S3-GA	1/4 inch Stem by 3/16 Barb Gray Acetal Push-in
PSB-4S4-K	1/4 inch Stem by 1/4 inch Barb PVDF Push-in
PSB-4S5-GA	1/4 inch Stem by 5/16 inch Barb Gray Acetal Push-in
PSB-4-WP	1/4 inch Stem by 1/4 inch Barb White Polypropylene Push-in
PSB-5-GA	5/16 inch Stem by 5/16 inch Barb Gray Acetal Push-in
PSB-5S3-GA	5/16 inch Stem by 3/16 Barb Gray Acetal Push-in
PSB-5S4-GA	5/16 inch Stem by 1/4 inch Barb Gray Acetal Push-in
PSB-5S6-GA	5/16 inch Stem by 3/8 inch Barb Gray Acetal Push-in
PSB-6-GA	3/8 inch Stem by 3/8 inch Barb Gray Acetal Push-in
PSB-6-K	3/8 inch Stem by 3/8 inch Barb PVDF Push-in
PSB-6S4-GA	3/8 inch Stem by 1/4 inch Barb Gray Acetal Push-in
PSB-6S4-K	3/8 inch Stem by 1/4 inch Barb PVDF Push-in
PSB-6S5-GA	3/8 inch Stem by 5/16 inch Barb Gray Acetal Push-in
PSB-6S8-GA	3/8 inch Stem by 1/2 inch Barb Gray Acetal Push-in
PSB-6S8-WP	3/8 inch Stem by 1/2 inch Barb White Polypropylene Push-in
PSB-6-WP	3/8 inch Stem by 3/8 inch Barb White Polypropylene Push-in
PSB-8-GA	1/2 inch Stem by 1/2 inch Barb Gray Acetal Push-in
PSB-8S6-GA	1/2 inch Stem by 3/8 inch Barb Gray Acetal Push-in
PSB-8S6-WP	1/2 inch Stem by 3/8 inch Barb White Polypropylene Push-in
PSB-8-WP	1/2 inch Stem by 1/2 inch Barb White Polypropylene Push-in



SPE SERIES

Push-to-Connect Elbow to Stem Swivel connectors available in Acetal, Polypropylene, and Kynar® can be added to any push-in connector to create a 90-degree connection. Stem sizes range from 1/2 inch to 5/32 inch OD. Push-in sizes of 1/2 inch to 5/32 inch. Use with Polyethylene, Brass, or Copper tubing. Gray or White Acetal are NSF and FDA-approved and have Buna seals for use in air, gases, and potable water applications. White Polypropylene with EPDM seals or PVDF with FKM seals. Maximum temperature 140°F at 60 psi for Polypropylene.

SKU	Description
SPE-3	3/16 Stem by 3/16 OD Elbow PBT
SPE-4	1/4 Stem by 1/4 OD Elbow PBT
SPE-4-6	1/4 Stem by 3/16 OD Elbow PBT
SPE-5	5/16 Stem by 5/16 OD Elbow PBT
SPE-532	5/32 Stem by 5/32 OD Elbow PBT
SPE-6	3/8 Stem by 3/8 OD Elbow PBT
SPE-6-3	3/8 Stem by 3/16 OD Elbow PBT
SPE-6-4	3/8 Stem by 1/4 OD Elbow PBT
SPE-6-5	3/8 Stem by 5/16 OD Elbow PBT
SPE-8	1/2 Stem by 1/2 OD Elbow PBT



PSP SERIES

Push-to-Connect to Stem is available in Acetal and polypropylene (select sizes only), and Kynar® can be added to a push-in connector to reduce the tubing size of Polyethylene, Brass, or Copper tubing. Stem sizes range from 1/2 inch to 3/16 inch reducing to as small as 5/32 inch OD. Gray or White Acetal are NSF and FDA-approved and have Buna seals for use in air, gases, and potable water applications. White Polypropylene with EPDM seals or PVDF with FKM seals. Maximum temperature 140°F at 60 psi for Polypropylene.

SKU	Description
PSP-3-532	3/16 Stem by 5/32 OD Push-to-Connect Reducer
PSP-5-3	5/16 Stem to 3/16 OD Push-to-Connect Reducer

SKU	Description
PSP-5-4	5/16 Stem to 1/4 OD Push-to-Connect Reducer
PSP-6-3	3/8 Stem to 3/16 OD Push-to-Connect Reducer
PSP-6-4	3/8 Stem to 1/4 OD Push-to-Connect Reducer
PSP-6-5	3/8 Stem to 5/16 OD Push-to-Connect Reducer
PSP-8-4	1/2 Stem to 1/4 OD Push-to-Connect Reducer
PSP-8-5	1/2 Stem to 5/16 OD Push-to-Connect Reducer
PSP-8-6	1/2 Stem to 3/8 OD Push-to-Connect Reducer



PACX SERIES

Push-to-Connect Cross connectors available in Acetal are used to join tubing of Polyethylene, Brass, or Copper. Sizes range from 3/8 inch OD size only. Gray or White Acetal are NSF and FDA-approved and have Buna seals for use in air, gases, and potable water applications. Also available with double O-ring EPDM seals. For other options see our PUCX Series Push-ins.

SKU	Description
PACX-6-A	3/8 inch OD Cross made of Acetal

PT SERIES



Push-to-Connect Tee connectors available in Acetal, Polypropylene, and Kynar® used to join the tubing of Polyethylene. Sizes range from 1/2 inch OD to 5/32 inch OD including reducing sizes. Gray or White Acetal are NSF and FDA-approved and have Buna seals for use in air, gases, and potable water applications. White Polypropylene with EPDM seals or PVDF with FKM seals. Maximum temperature 140°F at 60 psi for Polypropylene.

SKU	DESCRIPTION
PT-3	3/16 OD Push-to-Connect Union Tee
PT-4	1/4 OD Push-to-Connect Union Tee
PT-532	5/32 OD Push-to-Connect Union Tee
PT-5	5/16 OD Push-to-Connect Union Tee
PT-6-4-6	3/8 OD by 1/4 OD Run by 3/8 OD Push-to-Connect Union Tee
PT-6-4	3/8 OD by 1/4 OD Reducing Push-to-Connect Union Tee
PT-6	3/8 OD Push-to-Connect Union Tee
PT-8-6	1/2 OD by 3/8 OD Reducing Push-to-Connect Union Tee
PT-8	1/2 OD Push-to-Connect Union Tee

PY SERIES



Push-to-Connect Straight Divider Wye connectors available in Acetal, Polypropylene, and Kynar® used to split or reduce tubing connections of Polyethylene, Brass, or Copper. Sizes range from 1/4 inch OD to 3/8 inch OD including reducing sizes. Available in 1 inlet to 2 outlets, or 1 inlet to 3 outlets. Gray or White Acetal are NSF and FDA-approved and have Buna seals for use in air, gases, and potable water applications. White Polypropylene with EPDM seals or PVDF with FKM seals. Maximum temperature 140°F at 60 psi for Polypropylene.

SKU	Description
PY-4	1/4 Equal In/Out Push-to-Connect Wye
PY-5	5/16 Equal In/Out Push-to-Connect Wye
PY-6-5	3/8 to Dual 5/16 In/Out Push-to-Connect Wye

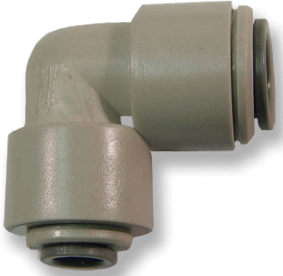
SKU	Description
PY-6	3/8 Equal In/Out Push-to-Connect Wye
PY-8	1/2 Equal In/Out Push-to-Connect Wye



PB SERIES

Push-to-Connect Panel Mount connectors available in Acetal, Polypropylene, and Kynar® used to join tubing of Polyethylene, Brass, or Copper. Sizes range from 5/32 inch OD to 1/2 inch OD including reducing sizes. Gray or White Acetal are NSF and FDA-approved and have Buna seals for use in air, gases, and potable water applications. White Polypropylene with EPDM seals or PVDF with FKM seals. Maximum temperature 140°F at 60 psi for Polypropylene.

SKU	Description
PB-3	3/16 OD Push-to-Connect Bulkhead
PB-4	1/4 OD Push-to-Connect Bulkhead
PB-532	5/32 OD Push-to-Connect Bulkhead
PB-5	5/16 OD Push-to-Connect Bulkhead
PB-6-4	3/8 OD by 1/4 OD Push-to-Connect Bulkhead
PB-6	3/8 OD Push-to-Connect Bulkhead
PB-8-4	1/2 OD by 1/4 OD Push-to-Connect Bulkhead



PE SERIES

Push-to-Connect Elbow connectors available in Acetal, Polypropylene, and Kynar® used to join tubing of Polyethylene, Brass, or Copper. Sizes range from 5/32 inch OD to 1/2 inch OD including reducing sizes. Gray or White Acetal are NSF and FDA-approved and have Buna seals for use in air, gases, and potable water applications. White Polypropylene with EPDM seals or PVDF with FKM seals. Maximum temperature 140°F at 60 psi for Polypropylene.

SKU	Description
PE-3	3/16 OD Push-to-Connect Elbow
PE-4	1/4 OD Push-to-Connect Elbow
PE-532	5/32 OD Push-to-Connect Elbow
PE-5-3	5/16 OD by 3/16 OD Push-to-Connect Elbow
PE-5-4	5/16 OD by 1/4 OD Push-to-Connect Elbow
PE-5-532	5/16 OD by 5/32 OD Push-to-Connect Elbow
PE-5	5/16 OD Push-to-Connect Elbow
PE-6-3	3/8 OD by 3/16 OD Push-to-Connect Elbow
PE-6-4	3/8 OD by 1/4 OD Push-to-Connect Elbow
PE-6-5	3/8 OD by 5/16 OD Push-to-Connect Elbow
PE-6	3/8 OD OD Push-to-Connect Elbow PP PVDF
PE-8-6	1/2 OD by 3/8 OD Push-to-Connect Elbow



PC SERIES

Push-to-Connect Straight Fittings connectors available in Acetal, Polypropylene, and Kynar® used to join tubing of Polyethylene, Brass, or Copper. Sizes range from 5/32 inch OD to 1/2 inch OD including reducing sizes. Gray or White Acetal are NSF and FDA-approved and have Buna seals for use in air, gases, and potable water applications. White Polypropylene with EPDM seals or PVDF with FKM seals. Maximum temperature 140°F at 60 psi for Polypropylene.

SKU	Description
PC-3	3/16 OD Equal Connector
PC-4	1/4 OD Equal Connector
PC-5	5/16 OD Equal Connector
PC-532	5/32 OD Equal Connector
PC-6	3/8 OD Equal Connector
PC-8	1/2 OD Equal Connector
PC-4-3	1/4 OD by 3/16 OD Reducer Connector
PC-5-532	5/16 OD by 5/32 OD Reducer Connector
PC-5-3	5/16 OD by 3/16 OD Reducer Connector
PC-5-4	5/16 OD by 1/4 OD Reducer Connector
PC-6-3	3/8 OD by 3/16 OD Reducer Connector
PC-6-4	3/8 OD by 1/4 OD Reducer Connector
PC-6-5	3/8 OD by 5/16 OD Reducer Connector
PC-8-5	1/2 OD by 5/16 OD Reducer Connector



STAINLESS STEEL PUSH-TO-CONNECTS

STAINLESS STEEL PUSH-TO-CONNECTS



TCM SERIES

TCM Series are Straight Connectors made of 316 Stainless Steel. One end is smooth for easy attachment of tubing and the other has male threads below a hex nut for tightening. Also, it has a working pressure of 290 psi and a temperature range of -4° F to 302° F. The sterilization temperature is up to 280° F. The O-Ring is Viton®. BSPT is also available.

SKU	DESCRIPTION
TCM-10-532P-SS	10-32 UNF Male by 5/32 OD 316 Stainless Steel Push-to-Connect
TCM-2M-14P-SS	1/8 MNPT by 1/4 OD 316 Stainless Steel Push-to-Connect
TCM-2M-316P-SS	1/8 MNPT by 3/16 OD 316 Stainless Steel Push-to-Connect
TCM-2M-516P-SS	1/8 MNPT by 5/16 OD 316 Stainless Steel Push-to-Connect
TCM-2M-532P-SS	1/8 MNPT by 5/32 OD 316 Stainless Steel Push-to-Connect
TCM-4M-316P-SS	1/4 MNPT by 3/16 OD 316 Stainless Steel Push-to-Connect
TCM-4M-4P-SS	1/4 MNPT by 1/4 OD 316 Stainless Steel Push-to-Connect
TCM-4M-5P-SS	1/4 MNPT by 5/16 OD 316 Stainless Steel Push-to-Connect
TCM-4M-6P-SS	1/4 MNPT by 3/8 OD 316 Stainless Steel Push-to-Connect
TCM-4M-8P-SS	1/4 MNPT by 1/2 OD 316 Stainless Steel Push-to-Connect
TCM-6M-6P-SS	3/8 MNPT by 3/8 OD 316 Stainless Steel Push-to-Connect
TCM-6M-8P-SS	3/8 MNPT by 1/2 OD 316 Stainless Steel Push-to-Connect
TCM-8M-6P-SS	1/2 MNPT by 3/8 OD 316 Stainless Steel Push-to-Connect
TCM-8M-8P-SS	1/2 MNPT by 1/2 OD 316 Stainless Steel Push-to-Connect