



PLASTIC PUSH-TO-CONNECTS

PLASTIC PUSH-TO-CONNECT

Acetal Plastic Fittings are used in food & beverage, pure water, air and inert gases applications as well as able to withstand a full vacuum. Acetal has a temperature range of 33°F to 158°F and a working pressure 150 psi at 73°F for 3/8" - 1/2" and 230 psi at 73°F for 5/32" - 5/16".

Polypropylene Plastic Fittings are chemically resistant and can withstand a full vacuum but unsuitable for compressed air. They have a temperature range of 33°F to 140°F with working pressures of 150 psi at 70°F and 60 psi at 140°F.

Kynar® (PVDF) Plastic Fittings are chemically resistant to highly corrosive fluids and is NSF 51 listed with a maximum temperature of 275°F and working pressure of 300 psi.

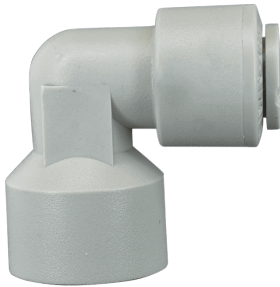
All three materials meet FDA standards and are NSF listed.

LTC SERIES - CLIPS



Acetal Clips are used with push-in fittings to secure the tubing from disconnecting. Used with Acetal and Polypropylene push-to-connect fittings in the food and beverage industry. for water and beverage dispensing. The outside dimensions of the tubing for these clips are 1/4", 5/16", 3/8", and 1/2". The temperature range is -4° F to 150° F. The pressure range is 145 psi to 230 psi. They are available in various colors; Red or Blue, also in metric sizes.

SKU	DESCRIPTION
LTC-3B	3/16" OD Acetal Locking Clip
LTC-4B	1/4" OD Acetal Locking Clip
LTC-5B	5/16" OD Acetal Locking Clip
LTC-6B	3/8" OD Acetal Locking Clip
LTC-8B	1/2" OD Acetal Locking Clip
LTC-5M	5 mm OD Acetal Locking Clip
LTC-8M	8 mm OD Acetal Locking Clip
LTC-10M	10 mm OD Acetal Locking Clip
LTC-12M	12 mm OD Acetal Locking Clip
LTC-15M	15 mm OD Acetal Locking Clip



PFE SERIES

PFE Series is a Push-to-connect fitting to a female pipe thread (FNPT) in a Fixed Elbow configuration. Also, push-to-connect sizes range from 1/4" or 3/8" with female pipe threads of 3/8" or 1/4". This fitting is available in gray Acetal, PVDF, and white Polypropylene. It is suitable for liquids and inert gases.

SKU	DESCRIPTION
PFE-4F4	1/4 FNPT by 1/4 OD Elbow Push-to-Connect Elbow
PFE-6F4	3/8 FNPT by 1/4 OD Elbow Push-to-Connect Elbow
PFE-6F6	3/8 FNPT by 3/8 OD Elbow Push-to-Connect Elbow



PFF SERIES

The PFF Series is a push-to-connect to female 7/16-20 or 5/8-18 Flare thread is a Straight Connection, for use in faucet applications. Push-to-connect sizes available in 3/8", 5/16" or 1/4". This product is available in Polypropylene and PVDF.

SKU	DESCRIPTION
PFF-7164	7/16-24 Female UNS Flare by 1/4 OD Faucet Fitting
PFF-7165	7/16-24 Female UNS Flare by 5/16 OD Faucet Fitting
PFF-7166	7/16-24 Female UNS Flare by 3/8 OD Faucet Fitting



PMR SERIES

PMR Series Male NPT to Push-to-Connect Swivel Tee connector configuration available in Acetal and select sizes in Polypropylene, and Kynar®. Push-to-Connect sizes range from 5/32 inch to 1/2 inch and Threads range from 1/2 inch MNPT to 1/8 inch MNPT. This is a swivel tee configuration using the **PT Series** and the **PSM Series** fittings. Gray or White Acetal are NSF and FDA-approved and have Buna seals for air, gases, and potable water applications. White Polypropylene with EPDM seals or PVDF with FKM seals. Maximum temperature 140°F at 60 psi for Polypropylene.

SKU	Description
PMR-2M4-GA	1/8 inch Male NPT by 1/4 inch Gray Acetal Male Run Tee Push-in
PMR-2M4-K	1/8 inch Male NPT by 1/4 inch PVDF Male Run Tee Push-in
PMR-2M4-PP	1/8 inch Male NPT by 1/4 inch Natural Polypropylene Male Run Tee Push-in
PMR-2M4-WA	1/8 inch Male NPT by 1/4 inch White Acetal Male Run Tee Push-in
PMR-2M532-GA	1/8 inch Male NPT by 5/32 inch Gray Acetal Male Run Tee Push-in
PMR-2M532-WA	1/8 inch Male NPT by 5/32 inch White Acetal Male Run Tee Push-in
PMR-2M5-GA	1/8 inch Male NPT by 5/16 inch Gray Acetal Male Run Tee Push-in
PMR-2M5-WA	1/8 inch Male NPT by 5/16 inch White Acetal Male Run Tee Push-in
PMR-4M4-GA	1/4 inch Male NPT by 1/4 inch Gray Acetal Male Run Tee Push-in
PMR-4M4-K	1/4 inch Male NPT by 1/4 inch PVDF Male Run Tee Push-in
PMR-4M4-PP	1/4 inch Male NPT by 1/4 inch Natural Polypropylene Male Run Tee Push-in
PMR-4M4-WA	1/4 inch Male NPT by 1/4 inch White Acetal Male Run Tee Push-in
PMR-4M532-GA	1/4 inch Male NPT by 5/32 inch Gray Acetal Male Run Tee Push-in
PMR-4M532-WA	1/4 inch Male NPT by 5/32 inch White Acetal Male Run Tee Push-in
PMR-4M5-GA	1/4 inch Male NPT by 5/16 inch Gray Acetal Male Run Tee Push-in
PMR-4M5-WA	1/4 inch Male NPT by 5/16 inch White Acetal Male Run Tee Push-in
PMR-4M6-GA	1/4 inch Male NPT by 3/8 inch Gray Acetal Male Run Tee Push-in
PMR-4M6-K	1/4 inch Male NPT by 3/8 inch PVDF Male Run Tee Push-in
PMR-4M6-PP	1/4 inch Male NPT by 3/8 inch Natural Polypropylene Male Run Tee Push-in
PMR-4M6-WA	1/4 inch Male NPT by 3/8 inch White Acetal Male Run Tee Push-in
PMR-4M8-GA	1/4 inch Male NPT by 1/2 inch Gray Acetal Male Run Tee Push-in
PMR-4M8-WA	1/4 inch Male NPT by 1/2 inch White Acetal Male Run Tee Push-in
PMR-6M5-GA	3/8 inch Male NPT by 5/16 inch Gray Acetal Male Run Tee Push-in
PMR-6M5-WA	3/8 inch Male NPT by 5/16 inch White Acetal Male Run Tee Push-in
PMR-6M6-GA	3/8 inch Male NPT by 3/8 inch Gray Acetal Male Run Tee Push-in
PMR-6M6-K	3/8 inch Male NPT by 3/8 inch PVDF Male Run Tee Push-in

SKU	Description
PMR-6M6-PP	3/8 inch Male NPT by 3/8 inch Natural Polypropylene Male Run Tee Push-in
PMR-6M6-WA	3/8 inch Male NPT by 3/8 inch White Acetal Male Run Tee Push-in
PMR-6M8-GA	3/8 inch Male NPT by 1/2 inch Gray Acetal Male Run Tee Push-in
PMR-6M8-WA	3/8 inch Male NPT by 1/2 inch White Acetal Male Run Tee Push-in
PMR-8M8-GA	1/2 inch Male NPT by 1/2 inch Gray Acetal Male Run Tee Push-in
PMR-8M8-WA	1/2 inch Male NPT by 1/2 inch White Acetal Male Run Tee Push-in



PMT SERIES

PMT Series Push-to-Connect Tee to Male NPT connectors are available in Acetal and select sizes in Polypropylene, and Kynar®. Push-to-Connect sizes range from 5/32 inch to 1/2 inch and Threads range from 1/2 inch MNPT to 1/8 inch MNPT. This swivel tee configuration uses the **PT Series** and **PSM Series** fittings. Gray or White Acetal are NSF and FDA-approved and have Buna seals for air, gases, and potable water applications. White Polypropylene with EPDM seals or PVDF with FKM seals. Maximum temperature 140°F at 60 psi for Polypropylene.

SKU	Description
PMT-2M3-GA	1/8 inch Male NPT by 3/16 inch OD Gray Acetal Tee Push-in
PMT-2M3-WA	1/8 inch Male NPT by 3/16 inch OD White Acetal Tee Push-in
PMT-2M4-GA	1/8 inch Male NPT by 1/4 inch OD Gray Acetal Tee Push-in
PMT-2M4-K	1/8 inch Male NPT by 1/4 inch OD PVDF Tee Push-in
PMT-2M4-WA	1/8 inch Male NPT by 1/4 inch OD White Acetal Tee Push-in
PMT-2M532-GA	1/8 inch Male NPT by 5/32 inch OD Gray Acetal Tee Push-in
PMT-2M532-WA	1/8 inch Male NPT by 5/32 inch OD White Acetal Tee Push-in
PMT-2M5-GA	1/8 inch Male NPT by 5/16 inch OD Gray Acetal Tee Push-in
PMT-2M5-WA	1/8 inch Male NPT by 5/16 inch OD White Acetal Tee Push-in
PMT-2M6-GA	1/8 inch Male NPT by 3/8 inch OD Gray Acetal Tee Push-in
PMT-2M6-K	1/8 inch Male NPT by 3/8 inch OD PVDF Tee Push-in
PMT-2M6-WA	1/8 inch Male NPT by 3/8 inch OD White Acetal Tee Push-in
PMT-4M4-GA	1/4 inch Male NPT by 1/4 inch OD Gray Acetal Tee Push-in
PMT-4M4-K	1/4 inch Male NPT by 1/4 inch OD PVDF Tee Push-in
PMT-4M4-WA	1/4 inch Male NPT by 1/4 inch OD White Acetal Tee Push-in
PMT-4M532-GA	1/4 inch Male NPT by 5/32 inch OD Gray Acetal Tee Push-in
PMT-4M532-WA	1/4 inch Male NPT by 5/32 inch OD White Acetal Tee Push-in
PMT-4M5-GA	1/4 inch Male NPT by 5/16 inch OD Gray Acetal Tee Push-in

SKU	Description
PMT-4M5-WA	1/4 inch Male NPT by 5/16 inch OD White Acetal Tee Push-in
PMT-4M6-GA	1/4 inch Male NPT by 3/8 inch OD Gray Acetal Tee Push-in
PMT-4M6-K	1/4 inch Male NPT by 3/8 inch OD PVDF Tee Push-in
PMT-4M6-PP	1/4 inch Male NPT by 3/8 inch OD Polypropylene Tee Push-in
PMT-4M6-WA	1/4 inch Male NPT by 3/8 inch OD White Acetal Tee Push-in
PMT-4M8-GA	1/4 inch Male NPT by 1/2 inch OD Gray Acetal Tee Push-in
PMT-4M8-PP	1/4 inch Male NPT by 1/2 inch OD Polypropylene Tee Push-in
PMT-4M8-WA	1/4 inch Male NPT by 1/2 inch OD White Acetal Tee Push-in
PMT-6M5-GA	3/8 inch Male NPT by 5/16 inch OD Gray Acetal Tee Push-in
PMT-6M5-PP	3/8 inch Male NPT by 5/16 inch OD Polypropylene Tee Push-in
PMT-6M5-WA	3/8 inch Male NPT by 5/16 inch OD White Acetal Tee Push-in
PMT-6M6-GA	3/8 inch Male NPT by 3/8 inch OD Gray Acetal Tee Push-in
PMT-6M6-K	3/8 inch Male NPT by 3/8 inch OD PVDF Tee Push-in
PMT-6M6-PP	3/8 inch Male NPT by 3/8 inch OD Polypropylene Tee Push-in
PMT-6M6-WA	3/8 inch Male NPT by 3/8 inch OD White Acetal Tee Push-in
PMT-6M8-GA	3/8 inch Male NPT by 1/2 inch OD Gray Acetal Tee Push-in
PMT-6M8-WA	3/8 inch Male NPT by 1/2 inch OD White Acetal Tee Push-in
PMT-8M8-GA	1/2 inch Male NPT by 1/2 inch OD Gray Acetal Tee Push-in
PMT-8M8-PP	1/2 inch Male NPT by 1/2 inch OD Polypropylene Tee Push-in
PMT-8M8-WA	1/2 inch Male NPT by 1/2 inch OD White Acetal Tee Push-in

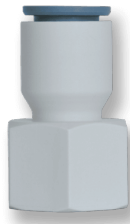


PMES SERIES

PMES Series Push-to-Connect to Male NPT Swivel Elbow connectors are available in Acetal and select sizes in Polypropylene, and Kynar®. Push-to-Connect sizes range from 5/32 inch to 1/2 inch and Threads range from 1/2 inch MNPT to 1/8 inch MNPT. Gray or White Acetal are NSF and FDA-approved and have Buna seals for air, gases, and potable water applications. White Polypropylene with EPDM seals or PVDF with FKM seals. Maximum temperature 140°F at 60 psi for Polypropylene. For non-swivel elbows see [PME Series](#).

SKU	Description
PMES-2M4	1/8 MNPT by 1/4 OD Swivel Elbow Push-to-Connect
PMES-2M532	1/8 MNPT by 5/32 OD Swivel Elbow Push-to-Connect
PMES-2M5	1/8 MNPT by 5/16 OD Swivel Elbow Push-to-Connect
PMES-2M6	1/8 MNPT by 3/8 OD Swivel Elbow Push-to-Connect
PMES-4M4	1/4 MNPT by 1/4 OD Swivel Elbow Push-to-Connect

SKU	Description
PMES-4M532	1/4 MNPT by 5/32 OD Swivel Elbow Push-to-Connect
PMES-4M5	1/4 MNPT by 5/16 OD Swivel Elbow Push-to-Connect
PMES-4M6	1/4 MNPT by 3/8 OD Swivel Elbow Push-to-Connect
PMES-4M8	1/4 MNPT by 1/2 OD Swivel Elbow Push-to-Connect
PMES-6M4	3/8 MNPT by 1/4 OD Swivel Elbow Push-to-Connect
PMES-6M5	3/8 MNPT by 5/16 OD Swivel Elbow Push-to-Connect
PMES-6M6	3/8 MNPT by 3/8 OD Swivel Elbow Push-to-Connect
PMES-6M8	3/8 MNPT by 1/2 OD Swivel Elbow Push-to-Connect
PMES-8M8	1/2 MNPT by 1/2 OD Swivel Elbow Push-to-Connect



PF SERIES

Push-to-Connect to Female NPT Straight connectors available in Acetal, Polypropylene, and Kynar® used to join Polyethylene, Brass, or Copper tubing. Push-to-Connect sizes range from 1/2 inch to 1/4 inch and Thread sizes range from 1/2 FNPT to 1/8 inch FNPT. Gray or White Acetal are NSF and FDA-approved and have Buna seals for air, gases, and potable water applications. White Polypropylene with EPDM seals or PVDF with FKM seals. Maximum temperature 140°F at 60 psi for Polypropylene.

SKU	Description
PF-2F4	1/8 FNPT by 1/4 OD Straight Push-to-Connect
PF-4F4	1/4 FNPT by 1/4 OD Straight Push-to-Connect
PF-4F5	1/4 FNPT by 5/16 OD Straight Push-to-Connect
PF-4F6	1/4 FNPT by 3/8 OD Straight Push-to-Connect
PF-6F5	3/8 FNPT by 5/16 OD Straight Push-to-Connect
PF-6F6	3/8 FNPT by 3/8 OD Straight Push-to-Connect
PF-6F8	3/8 FNPT by 1/2 OD Straight Push-to-Connect



PME SERIES

The PME Series Male Thread to Push-to-Connect Elbow connectors are available in Acetal and select sizes in Polypropylene, and PVDF. Push-in sizes range from 1/4 inch to 3/8 inch and Threads range from 3/8 inch MNPT to 1/8 inch MNPT. In addition, the Gray or White Acetal are NSF and FDA-approved and have Buna seals for air, gases, and potable water applications. White Polypropylene with EPDM seals or PVDF with FKM seals. Furthermore, the Maximum temperature is 140°F at 60 psi for Polypropylene.

SKU	Description
PME-2M4	1/8 MNPT by 1/4 OD Push-to-Connect Elbow
PME-4M4	1/4 MNPT by 1/4 OD Push-to-Connect Elbow
PME-4M5	1/4 MNPT by 5/16 OD Push-to-Connect Elbow
PME-4M6	1/4 MNPT by 3/8 OD Push-to-Connect Elbow
PME-6M4	3/8 MNPT by 1/4 OD Push-to-Connect Elbow
PME-6M5	3/8 MNPT by 5/16 OD Push-to-Connect Elbow
PME-6M6	3/8 MNPT by 3/8 OD Push-to-Connect Elbow
PME-6M8	3/8 MNPT by 1/2 OD Push-to-Connect Elbow



PM CONNECTOR SERIES

PM Series Straight Male Thread to Push-to-Connect connectors are available in Acetal and select sizes in Polypropylene, and Kynar®. Push-in sizes range from 5/32 inch to 5/8 inch and Threads range from 3/4 inch MNPT to 1/8 inch MNPT. Gray or White Acetal are NSF and FDA-approved and have Buna seals for air, gases, and potable water applications. White Polypropylene with EPDM seals or PVDF with FKM seals. Maximum temperature 140°F at 60 psi for Polypropylene.

SKU	Description
PM-12M10	3/4 MNPT by 5/8 OD Straight Push-to-Connect
PM-2M3	1/8 MNPT by 3/16 OD Straight Push-to-Connect
PM-2M4	1/8 MNPT by 1/4 OD Straight Push-to-Connect
PM-2M532	1/8 MNPT by 5/32 OD Straight Push-to-Connect

SKU	Description
PM-2M5	1/8 MNPT by 5/16 OD Straight Push-to-Connect
PM-2M6	1/8 MNPT by 3/8 OD Straight Push-to-Connect
PM-4BSPT6	1/4 BSPT by 3/8 OD Straight Push-to-Connect
PM-4M4	1/4 MNPT by 1/4 OD Straight Push-to-Connect
PM-4M532	1/4 MNPT by 5/32 OD Straight Push-to-Connect
PM-4M5	1/4 MNPT by 5/16 OD Straight Push-to-Connect
PM-4M6	1/4 MNPT by 3/8 OD Straight Push-to-Connect
PM-6M4	3/8 MNPT by 1/4 OD Straight Push-to-Connect
PM-6M5	3/8 MNPT by 5/16 OD Straight Push-to-Connect
PM-6M6	3/8 MNPT by 3/8 OD Straight Push-to-Connect
PM-6M8	3/8 MNPT by 1/2 OD Straight Push-to-Connect
PM-8M6	1/2 MNPT by 3/8 OD Straight Push-to-Connect
PM-8M8	1/2 MNPT by 1/2 OD Straight Push-to-Connect



PSM PIPE CONNECTOR SERIES

Stem connector to Male Pipe Thread Fittings can be added to a Female Pipe Thread port. The stem allows for adding a Push-to-Connect connector to create Tees, Elbows, Wyes, and Crosses. Can also be used to create Male to Male Pipe or Male to Female Pipe connections. These units allow the connection to Swivel. Acetal, Polypropylene, and Kynar® can be added to a Push-to-Connect connector to terminate in a barbed connection for use with Polyethylene, Vinyl, or braided Vinyl tubing. Stem sizes range from 1/2 inch to 5/32 inch with Pipe Threads ranging from 1/2 inch NPT to 1/8 inch NPT (See PMES, PMT, and PMR Series for examples.). Gray or White Acetal are NSF and FDA-approved and have Buna seals for use in air, gases, and potable water applications. White Polypropylene with EPDM seals or PVDF with FKM seals. Maximum temperature 140°F at 60 psi for Polypropylene.

SKU	Description
PSM-2M3-GA	1/8 MNPT by 3/16 OD Push-to-Connect Stem
PSM-2M4-GA	1/8 MNPT by 1/4 OD Push-to-Connect Stem
PSM-2M532-GA	1/8 MNPT by 5/32 OD Push-to-Connect Stem
PSM-2M5-GA	1/8 MNPT by 5/16 OD Push-to-Connect Stem
PSM-4M4-GA	1/4 MNPT by 1/4 OD Push-to-Connect Stem
PSM-4M532-GA	1/4 MNPT by 5/32 OD Push-to-Connect Stem
PSM-4M5-GA	1/4 MNPT by 5/16 OD Push-to-Connect Stem
PSM-4M6-GA	1/4 MNPT by 3/8 OD Push-to-Connect Stem

SKU	Description
PSM-4M8-GA	1/4 MNPT by 1/2 OD Push-to-Connect Stem
PSM-6M4-GA	3/8 MNPT by 1/4 OD Push-to-Connect Stem
PSM-6M5-GA	3/8 MNPT by 5/16 OD Push-to-Connect Stem
PSM-6M6-GA	3/8 MNPT by 3/8 OD Push-to-Connect Stem

PEB SERIES



The PEB Series Stem connector to Elbow Barbed Fittings comes in Acetal, Polypropylene, and Kynar® which can be added to a Push-to-Connect connector to terminate in a barbed connection for use with Polyethylene, Vinyl, or braided Vinyl tubing. Stem sizes range from 1/2 inch to 1/4 inch reducing to a 1/4 inch Barbed Fitting. Gray or White Acetal are NSF and FDA-approved and have Buna seals for air, gases, and potable water applications. White Polypropylene with EPDM seals or PVDF with FKM seals. Maximum temperature 140°F at 60 psi for Polypropylene.

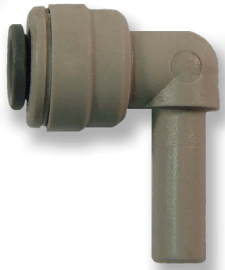
SKU	Description
PEB-4	1/4 OD Stem by 1/4 Barb Elbow
PEB-4S5	1/4 OD Stem by 5/16 Barb Elbow
PEB-5	5/16 OD Stem by 5/16 Barb Elbow
PEB-5S4	5/16 OD Stem by 1/4 Barb Elbow
PEB-5S5	5/16 OD Stem by 5/16 Barb Elbow
PEB-6	3/8 OD Stem by 3/8 Barb Elbow
PEB-6S4	3/8 OD Stem by 1/4 Barb Elbow
PEB-6S5	3/8 OD Stem by 5/16 Barb Elbow



PSB SERIES

Stem connector to Barbed Fittings Acetal, Polypropylene, and Kynar® can be added to a Push-to-Connect connector to terminate in a barbed connection for use with Polyethylene, Vinyl, or braided Vinyl tubing. Stem sizes range from 1/2 inch to 1/4 inch reducing to a 1/4 inch Barbed Fitting. Gray or White Acetal are NSF and FDA-approved and have Buna seals for use in air, gases, and potable water applications. White Polypropylene with EPDM seals or PVDF with FKM seals. Maximum temperature 140°F at 60 psi for Polypropylene.

SKU	Description
PSB-4-GA	1/4 inch Stem by 1/4 inch Barb Gray Acetal Push-in
PSB-4-K	1/4 inch Stem by 1/4 inch Barb PVDF Push-in
PSB-4S3-GA	1/4 inch Stem by 3/16 Barb Gray Acetal Push-in
PSB-4S4-K	1/4 inch Stem by 1/4 inch Barb PVDF Push-in
PSB-4S5-GA	1/4 inch Stem by 5/16 inch Barb Gray Acetal Push-in
PSB-4-WP	1/4 inch Stem by 1/4 inch Barb White Polypropylene Push-in
PSB-5-GA	5/16 inch Stem by 5/16 inch Barb Gray Acetal Push-in
PSB-5S3-GA	5/16 inch Stem by 3/16 Barb Gray Acetal Push-in
PSB-5S4-GA	5/16 inch Stem by 1/4 inch Barb Gray Acetal Push-in
PSB-5S6-GA	5/16 inch Stem by 3/8 inch Barb Gray Acetal Push-in
PSB-6-GA	3/8 inch Stem by 3/8 inch Barb Gray Acetal Push-in
PSB-6-K	3/8 inch Stem by 3/8 inch Barb PVDF Push-in
PSB-6S4-GA	3/8 inch Stem by 1/4 inch Barb Gray Acetal Push-in
PSB-6S4-K	3/8 inch Stem by 1/4 inch Barb PVDF Push-in
PSB-6S5-GA	3/8 inch Stem by 5/16 inch Barb Gray Acetal Push-in
PSB-6S8-GA	3/8 inch Stem by 1/2 inch Barb Gray Acetal Push-in
PSB-6S8-WP	3/8 inch Stem by 1/2 inch Barb White Polypropylene Push-in
PSB-6-WP	3/8 inch Stem by 3/8 inch Barb White Polypropylene Push-in
PSB-8-GA	1/2 inch Stem by 1/2 inch Barb Gray Acetal Push-in
PSB-8S6-GA	1/2 inch Stem by 3/8 inch Barb Gray Acetal Push-in
PSB-8S6-WP	1/2 inch Stem by 3/8 inch Barb White Polypropylene Push-in
PSB-8-WP	1/2 inch Stem by 1/2 inch Barb White Polypropylene Push-in



SPE SERIES

Push-to-Connect Elbow to Stem Swivel connectors available in Acetal, Polypropylene, and Kynar® can be added to any push-in connector to create a 90-degree connection. Stem sizes range from 1/2 inch to 5/32 inch OD. Push-in sizes of 1/2 inch to 5/32 inch. Use with Polyethylene, Brass, or Copper tubing. Gray or White Acetal are NSF and FDA-approved and have Buna seals for use in air, gases, and potable water applications. White Polypropylene with EPDM seals or PVDF with FKM seals. Maximum temperature 140°F at 60 psi for Polypropylene.

SKU	Description
SPE-3	3/16 Stem by 3/16 OD Elbow PBT
SPE-4	1/4 Stem by 1/4 OD Elbow PBT
SPE-4-6	1/4 Stem by 3/16 OD Elbow PBT
SPE-5	5/16 Stem by 5/16 OD Elbow PBT
SPE-532	5/32 Stem by 5/32 OD Elbow PBT
SPE-6	3/8 Stem by 3/8 OD Elbow PBT
SPE-6-3	3/8 Stem by 3/16 OD Elbow PBT
SPE-6-4	3/8 Stem by 1/4 OD Elbow PBT
SPE-6-5	3/8 Stem by 5/16 OD Elbow PBT
SPE-8	1/2 Stem by 1/2 OD Elbow PBT



PSP SERIES

Push-to-Connect to Stem is available in Acetal and polypropylene (select sizes only), and Kynar® can be added to a push-in connector to reduce the tubing size of Polyethylene, Brass, or Copper tubing. Stem sizes range from 1/2 inch to 3/16 inch reducing to as small as 5/32 inch OD. Gray or White Acetal are NSF and FDA-approved and have Buna seals for use in air, gases, and potable water applications. White Polypropylene with EPDM seals or PVDF with FKM seals. Maximum temperature 140°F at 60 psi for Polypropylene.

SKU	Description
PSP-3-532	3/16 Stem by 5/32 OD Push-to-Connect Reducer
PSP-5-3	5/16 Stem to 3/16 OD Push-to-Connect Reducer

SKU	Description
PSP-5-4	5/16 Stem to 1/4 OD Push-to-Connect Reducer
PSP-6-3	3/8 Stem to 3/16 OD Push-to-Connect Reducer
PSP-6-4	3/8 Stem to 1/4 OD Push-to-Connect Reducer
PSP-6-5	3/8 Stem to 5/16 OD Push-to-Connect Reducer
PSP-8-4	1/2 Stem to 1/4 OD Push-to-Connect Reducer
PSP-8-5	1/2 Stem to 5/16 OD Push-to-Connect Reducer
PSP-8-6	1/2 Stem to 3/8 OD Push-to-Connect Reducer



PACX SERIES

Push-to-Connect Cross connectors available in Acetal are used to join tubing of Polyethylene, Brass, or Copper. Sizes range from 3/8 inch OD size only. Gray or White Acetal are NSF and FDA-approved and have Buna seals for use in air, gases, and potable water applications. Also available with double O-ring EPDM seals. For other options see our PUCX Series Push-ins.

SKU	Description
PACX-6-A	3/8 inch OD Cross made of Acetal

PT SERIES



Push-to-Connect Tee connectors available in Acetal, Polypropylene, and Kynar® used to join the tubing of Polyethylene. Sizes range from 1/2 inch OD to 5/32 inch OD including reducing sizes. Gray or White Acetal are NSF and FDA-approved and have Buna seals for use in air, gases, and potable water applications. White Polypropylene with EPDM seals or PVDF with FKM seals. Maximum temperature 140°F at 60 psi for Polypropylene.

SKU	DESCRIPTION
PT-3	3/16 OD Push-to-Connect Union Tee
PT-4	1/4 OD Push-to-Connect Union Tee
PT-532	5/32 OD Push-to-Connect Union Tee
PT-5	5/16 OD Push-to-Connect Union Tee
PT-6-4-6	3/8 OD by 1/4 OD Run by 3/8 OD Push-to-Connect Union Tee
PT-6-4	3/8 OD by 1/4 OD Reducing Push-to-Connect Union Tee
PT-6	3/8 OD Push-to-Connect Union Tee
PT-8-6	1/2 OD by 3/8 OD Reducing Push-to-Connect Union Tee
PT-8	1/2 OD Push-to-Connect Union Tee

PY SERIES



Push-to-Connect Straight Divider Wye connectors available in Acetal, Polypropylene, and Kynar® used to split or reduce tubing connections of Polyethylene, Brass, or Copper. Sizes range from 1/4 inch OD to 3/8 inch OD including reducing sizes. Available in 1 inlet to 2 outlets, or 1 inlet to 3 outlets. Gray or White Acetal are NSF and FDA-approved and have Buna seals for use in air, gases, and potable water applications. White Polypropylene with EPDM seals or PVDF with FKM seals. Maximum temperature 140°F at 60 psi for Polypropylene.

SKU	Description
PY-4	1/4 Equal In/Out Push-to-Connect Wye
PY-5	5/16 Equal In/Out Push-to-Connect Wye
PY-6-5	3/8 to Dual 5/16 In/Out Push-to-Connect Wye

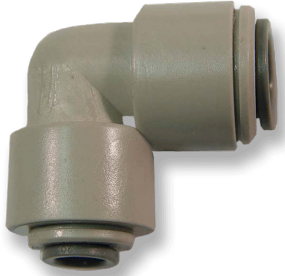
SKU	Description
PY-6	3/8 Equal In/Out Push-to-Connect Wye
PY-8	1/2 Equal In/Out Push-to-Connect Wye



PB SERIES

Push-to-Connect Panel Mount connectors available in Acetal, Polypropylene, and Kynar® used to join tubing of Polyethylene, Brass, or Copper. Sizes range from 5/32 inch OD to 1/2 inch OD including reducing sizes. Gray or White Acetal are NSF and FDA-approved and have Buna seals for use in air, gases, and potable water applications. White Polypropylene with EPDM seals or PVDF with FKM seals. Maximum temperature 140°F at 60 psi for Polypropylene.

SKU	Description
PB-3	3/16 OD Push-to-Connect Bulkhead
PB-4	1/4 OD Push-to-Connect Bulkhead
PB-532	5/32 OD Push-to-Connect Bulkhead
PB-5	5/16 OD Push-to-Connect Bulkhead
PB-6-4	3/8 OD by 1/4 OD Push-to-Connect Bulkhead
PB-6	3/8 OD Push-to-Connect Bulkhead
PB-8-4	1/2 OD by 1/4 OD Push-to-Connect Bulkhead



PE SERIES

Push-to-Connect Elbow connectors available in Acetal, Polypropylene, and Kynar® used to join tubing of Polyethylene, Brass, or Copper. Sizes range from 5/32 inch OD to 1/2 inch OD including reducing sizes. Gray or White Acetal are NSF and FDA-approved and have Buna seals for use in air, gases, and potable water applications. White Polypropylene with EPDM seals or PVDF with FKM seals. Maximum temperature 140°F at 60 psi for Polypropylene.

SKU	Description
PE-3	3/16 OD Push-to-Connect Elbow
PE-4	1/4 OD Push-to-Connect Elbow
PE-532	5/32 OD Push-to-Connect Elbow
PE-5-3	5/16 OD by 3/16 OD Push-to-Connect Elbow
PE-5-4	5/16 OD by 1/4 OD Push-to-Connect Elbow
PE-5-532	5/16 OD by 5/32 OD Push-to-Connect Elbow
PE-5	5/16 OD Push-to-Connect Elbow
PE-6-3	3/8 OD by 3/16 OD Push-to-Connect Elbow
PE-6-4	3/8 OD by 1/4 OD Push-to-Connect Elbow
PE-6-5	3/8 OD by 5/16 OD Push-to-Connect Elbow
PE-6	3/8 OD OD Push-to-Connect Elbow PP PVDF
PE-8-6	1/2 OD by 3/8 OD Push-to-Connect Elbow



PC SERIES

Push-to-Connect Straight Fittings connectors available in Acetal, Polypropylene, and Kynar® used to join tubing of Polyethylene, Brass, or Copper. Sizes range from 5/32 inch OD to 1/2 inch OD including reducing sizes. Gray or White Acetal are NSF and FDA-approved and have Buna seals for use in air, gases, and potable water applications. White Polypropylene with EPDM seals or PVDF with FKM seals. Maximum temperature 140°F at 60 psi for Polypropylene.

SKU	Description
PC-3	3/16 OD Equal Connector
PC-4	1/4 OD Equal Connector
PC-5	5/16 OD Equal Connector
PC-532	5/32 OD Equal Connector
PC-6	3/8 OD Equal Connector
PC-8	1/2 OD Equal Connector
PC-4-3	1/4 OD by 3/16 OD Reducer Connector
PC-5-532	5/16 OD by 5/32 OD Reducer Connector
PC-5-3	5/16 OD by 3/16 OD Reducer Connector
PC-5-4	5/16 OD by 1/4 OD Reducer Connector
PC-6-3	3/8 OD by 3/16 OD Reducer Connector
PC-6-4	3/8 OD by 1/4 OD Reducer Connector
PC-6-5	3/8 OD by 5/16 OD Reducer Connector
PC-8-5	1/2 OD by 5/16 OD Reducer Connector