



LUERS

LUERS

Luers: Where ISO Standards Meet Custom Excellence.
Pneuline manufactures Luer connectors for custom products to meet the needs of EOMs.

40AC-PB4 INSERT BARBED ELBOW



40 Series Insert, 90 degree elbow with barbs of 1/4, 3/8.

Available with and w/o Shut off.

MPV-L SERIES | MEDICAL GRADE LUER CHECK VALVES



Our MPV Luer Series Medical Grade Plastic Check Valves are manufactured, assembled, produced, 15 psi tested, and pre-packaged in a Class 7 Cleanroom environment

Check valves Made of Polypropylene, Polycarbonate, Radiation-Stable Polycarbonate, and Kynar 720®.

4 Main Connector Options: Male Inlet Luer with Rotating Collar to Female Luer, Male Inlet Rotating Collar to Male Rotating Collar, Female Inlet Luer Lock to Female Luer Lock, Female Inlet Luer Lock to Male Slip, Barb to ***

Diaphragm Options: Silicone

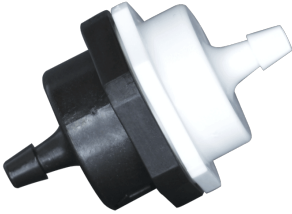
Flow Direction: Inlet to Outlet

***Custom Options: These Luers can be manufactured to fit with any of our Barb Connectors on the opposing end.

Barb Size options: 1/8 inch, 3/16 inch, 1/4 inch, 5/16 inch, 3/8 inch

| SKU | Description |
|---------------|---|
| MPV-FLL-PC-S | IN: Female Luer OUT: Female Luer |
| MLLR-PC-S | IN: Male Luer OUT: Male Luer w/Rotating Collar |
| FLL-MLLR-PC-S | IN: Female Luer OUT: Male Luer w/ Rotating Collar |
| MLLR-FLL-PC-S | IN: Male Luer Out: Female Luer |

SINGLE OR MULTI-BARB CHECK VALVE



This check valve is made of either white polypropylene, natural Nylon, or black or natural Kynar®. It is available with a Buna-N, EPDM, or Viton® seal. It has a 302 stainless steel spring. The cracking pressure is .25 or 1 psi. The maximum pressure is 125 psi and the maximum operating temperature is 140°F. The ports can be single or multi-barbed.



MLLR-MG SERIES

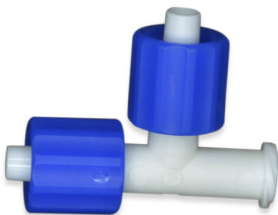
The MLLR-MG Series are rotating male luer to barb. It is available in clear ABS and radiation stable Polycarbonate. In addition, barb sizes are 1/32", 1/16", 3/32", 1/8", 5/32", 3/16" and 1/4". Separate locking rings are available in several colors of Nylon.



MLLR-1428 SERIES- MALE LUER

Male luer with 5/16" hex to 1/4-28 UNF thread. It is available in white and black Nylon, natural Polypropylene, clear Polycarbonate, and PVDF. Separate locking rings are offered in various nylon colors. 1/4-28 bottom sealing threads are also available.

ML SERIES



The ML Series are rotating male luers made of Nylon, Polypropylene, or Polycarbonate. Nut colors include black, red, and blue. See all parts listed below.

| SKU | DESCRIPTION |
|---------|---|
| MLLRF | Male Luer Swivel by Female Luer |
| MLLRM | Male Luer Swivel Connector |
| MLEF | Male Luer Swivel by Female Luer |
| MLEM | Male Luer Swivel by Male Luer Swivel |
| MLLFMTR | Male Luer Swivel/Female Luer/Male Luer Swivel |
| MLLFFTR | Male Luer SWIVEL/ Female LUER/ Female Luer |



MFT & MFMT LUER TEE

Tee is available in 2 different configurations: 2 female thread style luers and 1 male luer and 2 male luers to 1 female thread style luer. They are both available in white and black Nylon, Polypropylene, and clear and radiation stable Polycarbonate. They may be used with a separate locking ring.

SKU

DESCRIPTION

- MFT-PP Female Luer by Female Luer Thread by Male Luer Tee Polypropylene
- MFMT-PP Male Luer by Male Luer by Female Luer Thread Tee Polypropylene



FLLT SERIES

The FLLT Series is a Female luer lug-style Tee connector made of white Nylon, natural Polypropylene, clear Polycarbonate, radiation-stable Polycarbonate, and PVDF.

SKU

DESCRIPTION

- FLLT-WN Female Luer Lug Style Tee White Nylon

FLLE-MSL SERIES



The FLLE-MSL Series is a Male-luer-to-female luer thread-style Elbow connector. Which is made of white & black Nylon, natural Polypropylene, clear Polycarbonate, & Radiation Stable Polycarbonate. Also, separate rotating lock rings are available.

| SKU | DESCRIPTION |
|-------------|---|
| FLLE-MSL | Male Luer to Female Thread Style Luer Elbow |
| FLLE-MSL-PP | Male Luer to Female Thread Style Luer Elbow Polypropylene |

FLLE- TSEC SERIES



The FLLE-TSEC Series is a Female luer thread-style Elbow connector that is engineered using a variety of high-quality materials. These connectors are available in Nylon, offering robust durability. In addition, they are crafted from natural Polypropylene, known for its chemical resistance and lightweight properties. Furthermore, the series includes connectors made from clear Polycarbonate, providing superior impact resistance and optical clarity. Lastly, the connectors are available in PVDF which is known for its high purity, strength, and resistance to solvents and acids. This material selection ensures that the FLLE-TSEC Series can meet a wide range of application requirements.

| SKU | DESCRIPTION |
|-----------|--|
| FLLE-WN | Female Luer Lock Elbow White Nylon |
| FLLE-NPP | Female Luer Lock Elbow Natural Polypropylene |
| FLLE-PC | Female Luer Lock Elbow Polycarbonate |
| FLLE-PVDF | Female Luer Lock Elbow PVDF |

MSSC SERIES



MSSC Series is a male slip-by male slip luer connector made of white Nylon, natural Polypropylene, clear Polycarbonate, and PVDF. Rotating collars are available.

FLLC-MG SERIES



The FLLC-MG Series is a Female luer lock coupler. It is available in white Nylon, Polypropylene, clear Polycarbonate, radiation Polycarbonate, and PVDF.

| SKU | DESCRIPTION |
|---------|----------------------------|
| FLLC-MG | Female Luer Lock Connector |



FLLPC PANEL MOUNT SERIES

The FLLPC Series is a Panel-mounted female luer lock with a hose barb fitting. Panel mount threads are 1/4-28. The barbs on the inside of the panel are 1/16", 3/32" and 1/8". This luer lock is made of white and black Nylon, natural Polypropylene, clear polycarbonate, and PVDF. Optional color-coded panel rings and nuts are available.

| SKU | DESCRIPTION |
|--------------|--|
| FLLPC-S-1B | Female Luer Lock to 1/16 Barb Bulkhead |
| FLLPC-S-2B | Female Luer Lock to 1/8 Barb Bulkhead |
| FLLPC-S-332B | Female Luer Lock to 3/32 Barb Bulkhead |



MLLC SERIES

The MLLC Series is a male luer integral lock ring to female luer. It is available in white and black Nylon, natural Polypropylene, clear Polycarbonate, and Radiation Stable Polycarbonate.

| SKU | DESCRIPTION |
|------|---|
| MLLC | Male Luer Lock to Female Luer Connector |

MLL SERIES



Male luer by thread adapter. The bottom sealing threads are available in both UNF and NPT. The lock ring is available as integral or rotating. The integral lock ring luer is available in white and black Nylon, black Acetal, black and natural Polypropylene, clear Polycarbonate, and PVDF. The rotating lock rings are available in 7 colors of Nylon over Polypropylene or PVDF.

| SKU | DESCRIPTION |
|------------|---|
| MLL-10 | Male Luer Lock to 10/32 UNF Thread |
| MLL-14-BSR | Male Luer Lock to 1/4-28 UNF Thread Bottom Seal |
| MLL-2M | Male Luer Lock to 1/8 MNPT |
| MLL-4M | Male Luer Lock to 1/4 MNPT |

MSLE SERIES



Male slip luer by barb Elbow. The barb accommodates 3/32" ID tubing. This luer may be used with a separate rotating lock ring. It is available in white and black Nylon, black Polypropylene, and clear Polycarbonate.

| SKU | DESCRIPTION |
|------|------------------------------|
| MSLE | Male Slip Luer Elbow by Barb |

FSL & MSL SERIES



The FSL & MSL Series is a Male and Female Slip Luers in clear ABS, white Nylon, clear Polycarbonate, PVDF, and radiation-stable polycarbonate. Barb sizes range from 1/16" to 1/4". 1/4-28 male UNF threads are also available.

| SKU | DESCRIPTION |
|-------------|--|
| FSL-I-18 | Female Slip Luer to White Nylon 1/8 Barb |
| FSL-MG-116 | Female Slip Luer to 1/16 Barb |
| FSL-MG-332 | Female Slip Luer to 3/32 Barb |
| FSL-MG-18 | Female Slip Luer to 1/8 Barb |
| FSL-S-532 | Female Slip Luer to 5/32 Barb |
| MSL-14 | Male Slip Luer to 1/4-28 Male UNF |
| MSL-MG-116 | Male Slip Luer to 1/16 Barb |
| MSL-MG-332 | Male Slip Luer to 3/32 Barb |
| MSL-MG-18 | Male Slip Luer to 1/8 Barb |
| MSL-S-1B-NK | Male Slip Luer to 1/16 Barb |
| MSL-S-532 | Male Slip Luer to 5/32 Barb |
| MSL-U-316 | Male Slip Luer to 3/16 Barb |

FLL UNF SERIES



The FLL series female luers have an integrated filter, making them ideal for filtration applications. The nylon bodies and nylon filters are available in various micron ratings: 10, 30, 48, 70, 100, 140, and 190 microns. This range allows for flexibility in filtration needs, making them suitable for various applications. Polypropylene bodies with Polypropylene filters of 105 or 150 microns are available. These filters come in UNF sizes of 10-32 inch or 1/4-28 inch.

| SKU | Description |
|-----------|--|
| FLL-14-NK | Female Luer Lock by 1/4-28 UNF PVDF |
| FLL-14-PP | Female Luer Lock by 1/4-28 UNF Polypropylene |
| FLL-14-WN | Female Luer Lock by 1/4-28 UNF White Nylon |

| SKU | Description |
|------------------|--|
| FLL-14-PC | Female Luer Lock by 1/4-28 UNF Polycarbonate |
| FLL-1032-K-70N | Female Luer Lock by 10-32 UNF PVDF 70 Micron Nylon |
| FLL-1032-N-10N | Female Luer Lock by 10-32 UNF Nylon 10 Micron Nylon |
| FLL-1032-PP-105N | Female Luer Lock by 10-32 UNF Polypropylene 105 Micron Nylon |
| FLL-18-NK | Female Luer Lock by 1/8 MNPT |
| FLL-316-NK | Female Luer Lock by 3/16 MNPT |

QCD SERIES - LUER DUCKBILL CHECK VALVES



The QCD Series Luer Check Valves are made of Polycarbonate and have a Silicone duck bill. The low cracking pressure is 0.433 psi, which determines when the component starts to open. The OD sizes are 5/64 inch, 7/64 inch, and 9/64 inch. Also available with female and male Luer Locks.

| SKU | Description |
|---------|--|
| QCD-564 | 5/64 inch OD Tubing Polycarbonate Luer Check Valve |
| QCD-764 | 7/64 inch OD Tubing Polycarbonate Luer Check Valve |
| QCD-964 | 9/64 inch OD Tubing Polycarbonate Luer Check Valve |
| QCD-FM | Female by Male Luer Lock Polycarbonate Check Valve |