



COUPLERS

COUPLERS

Discover Pneuline's Diverse Coupler Selection: Metal, Plastic, and a pristine collection of Luers.



LUERS

LUERS

Luers: Where ISO Standards Meet Custom Excellence.
Pneuline manufactures Luer connectors for custom products to meet the needs of EOMs.

GEN1-FLL



Built for precision and versatility, the Gen1-FLL series is a dedicated female luer lock fitting that simplifies fluid connection workflows. Each fitting includes a secure barbed end for reliable tubing engagement and comes in a wide selection of sizes and materials to meet the demands of your specific application.

Perfect for medical, lab, and industrial settings, the Gen1-FLL ensures tight, leak-resistant seals—even in low-pressure systems—and maintains full compatibility with standard male luer components. Its universal luer lock geometry integrates effortlessly into existing setups and equipment.

Need a male counterpart? [Gen1-MLL](#) fittings are sold separately and can be paired as needed for complete system connectivity.

- Standalone female luer lock fitting
- Available in multiple sizes & materials
- Optimized for fluid transfer, sampling & low-pressure systems

SKU	Description	Material Options
Gen1-1B-FLL	1/16 Barbed Female Luer Lock	Acetal Kynar ® Nylon Polycarbonate Polypropylene
Gen1-2B-FLL	1/8 Barbed Female Luer Lock	Acetal Kynar ® Nylon Polycarbonate Polypropylene
Gen1-3B-FLL	3/16 Barbed Female Luer Lock	Acetal Kynar ® Nylon Polycarbonate Polypropylene

GEN1-MLL



Engineered for precision and flexibility, the Gen1-MLL series delivers a streamlined male luer lock fitting designed to simplify your setup and save time. Each unit features a secure barbed end for reliable tubing connections and is available in a range of sizes and materials to suit your exact application.

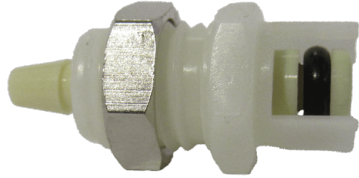
Whether you're working in a medical, laboratory, or industrial environment, this standalone male luer offers exceptional compatibility and performance. Standard luer lock geometry ensures seamless integration into existing systems and equipment, while its leak-resistant design supports flexible or semi-rigid tubing—even in low-pressure systems.

For applications requiring a female counterpart, [Gen1-FLL](#) fittings are available separately and can be paired as needed to complete your connection.

- Precision male luer lock fitting
- Multiple sizes & materials available
- Ideal for fluid transfer, sampling, and low-pressure systems

SKU	Description	Material Options
Gen1-1B-MLL	1/16 Barbed Male Luer Lock	Acetal Kynar ® Nylon Polycarbonate Polypropylene
Gen1-2B-MLL	1/8 Barbed Male Luer Lock	Acetal Kynar ® Nylon Polycarbonate Polypropylene
Gen1-3B-MLL	3/16 Barbed Male Luer Lock	Acetal Kynar ® Nylon Polycarbonate Polypropylene

10AC-PB3 SERIES



1/16 Flow Panel Mount Insert, 7/16-24 UNF thread for 1/2 ID thru hole.
Available in 1/16 and 1/8 Barb Size molded from Natural or Black Acetal.

NON-VALVED	TUBE SIZE	LENGTH	WIDTH
10AC-PB2-01	1/16	.75	.50
10AC-PB2-01BLK	1/16	.75	.50
10AC-PB2-02	1/8	.75	.50
10AC-PB2-02BLK	1/8	.75	.50



20AC PB3 SERIES

1/8 flow male insert, panel mount coupler available in 1/16, 1/8, 3/16 and 1/4 Barbs. product is made with and w/o shutoff.

Nickel plated Brass Panel nut, 5/8 hex with a 1/2-24 UNS threads. Panel mount thru hole requires .50 inches.

[table "602" not found /]

40AC PB8 PANEL MOUNT INSERT COMPRESSION



40 Series insert, Panel mount with Compression Fitting. Available with Compression fitting for 1/4 or 3/8 OD tubing.

Nickel-plated brass panel nut and compression fitting

FDA/NSF Buna O-ring.

NON-VALVED	VALVED	TUBE ID/OD	LENGTH	WIDTH
40AC-PB8-04	40ACV-PB8-04	.170 ID/.250 OD	1.77"NV/ 1.91"V	.63
40AC-PB8-06	40ACV-PB8-06	.250 ID/.375 OD	1.90"NV/ 2.04"V	.63



MPV-L SERIES | MEDICAL GRADE LUER CHECK VALVES

Engineered for **critical medical and laboratory applications**, our **MPV Luer Series Medical Grade Plastic Check Valves** are **manufactured, assembled, and rigorously tested at 15 PSI in a certified Class 7 Cleanroom environment**, ensuring unmatched contamination control and reliability.

Ultra-Pure, High-Performance Materials Crafted from premium **Polypropylene, Polycarbonate, Radiation-Stable Polycarbonate, and Kynar® 720**, our check valves deliver **exceptional chemical resistance and durability** for demanding medical, pharmaceutical, and laboratory environments.

Precision-Designed for Sterile Applications Pre-packaged and produced under strict cleanroom conditions, these valves provide **consistent performance where purity matters most.**

4 Main Connector Options:

- Male Inlet Luer with Rotating Collar to Female Luer
- Male Inlet Rotating Collar to Male Rotating Collar
- Female Inlet Luer Lock to Female Luer Lock
- Female Inlet Luer Lock to Male Slip

Barb to ***

Diaphragm Options: Silicone

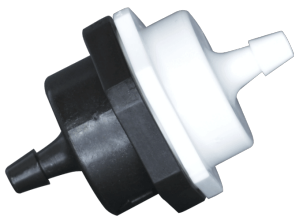
Flow Direction: Inlet to Outlet

****Custom Options: These Luers can be manufactured to fit with any of our Barb Connectors on the opposing end.
Barb Size options: 1/8 inch, 3/16 inch, 1/4 inch, 5/16 inch, 3/8 inch*

SKU	Luers	Body Material	Diaphragm
MPV-FLL-BODY-DIAPHRAGM	IN: Female Luer OUT: Female Luer	Polycarbonate Polypropylene Kynar®	Silicone USP Class VI
MPV-MLLR-BODY-DIAPHRAGM	IN: Male Luer OUT: Male Luer w/Rotating Collar	Polycarbonate Polypropylene Kynar®	Silicone USP Class VI
MPV-FLL-MLLR-BODY-DIAPHRAGM	IN: Female Luer OUT: Male Luer w/ Rotating Collar	Polycarbonate Polypropylene Kynar®	Silicone USP Class VI
MPV-MLLR-FLL-BODY-DIAPHRAGM	IN: Male Luer OUT: Female Luer	Polycarbonate Polypropylene Kynar®	Silicone USP Class VI

Cleanroom Class 8 Production & Manufacturing Available

SINGLE OR MULTI-BARB CHECK VALVE



This check valve is made of either white polypropylene, natural Nylon, or black or natural Kynar®. It is available with a Buna-N, EPDM, or Viton® seal. It has a 302 stainless steel spring. The cracking pressure is .25 or 1 psi. The maximum pressure is 125 psi and the maximum operating temperature is 140°F. The ports can be single or multi-barbed.



MLLR-MG SERIES

The MLLR-MG Series are rotating male luer to barb. It is available in clear ABS and radiation stable Polycarbonate. In addition, barb sizes are 1/32", 1/16", 3/32", 1/8", 5/32", 3/16" and 1/4". Separate locking rings are available in several colors of Nylon.



MLLR-1428 SERIES- MALE LUER

Male luer with 5/16" hex to 1/4-28 UNF thread. It is available in white and black Nylon, natural Polypropylene, clear Polycarbonate, and PVDF. Separate locking rings are offered in various nylon colors. 1/4-28 bottom sealing threads are also available.

ML SERIES



The ML Series are rotating male luers made of Nylon, Polypropylene, or Polycarbonate. Nut colors include black, red, and blue. See all parts listed below.

SKU	DESCRIPTION
MLLRF	Male Luer Swivel by Female Luer
MLLRM	Male Luer Swivel Connector
MLEF	Male Luer Swivel by Female Luer
MLEM	Male Luer Swivel by Male Luer Swivel
MLLFMTR	Male Luer Swivel/Female Luer/Male Luer Swivel
MLLFFTR	Male Luer SWIVEL/ Female LUER/ Female Luer

MFT & MFMT LUER TEE



Tee is available in 2 different configurations: 2 female thread style luers and 1 male luer and 2 male luers to 1 female thread style luer. They are both available in white and black Nylon, Polypropylene, and clear and radiation stable Polycarbonate. They may be used with a separate locking ring.

SKU	DESCRIPTION
MFT-PP	Female Luer by Female Luer Thread by Male Luer Tee Polypropylene
MFMT-PP	Male Luer by Male Luer by Female Luer Thread Tee Polypropylene



FLLT SERIES

The FLLT Series is a Female luer lug-style Tee connector made of white Nylon, natural Polypropylene, clear Polycarbonate, radiation-stable Polycarbonate, and PVDF.

SKU	DESCRIPTION
FLLT-WN	Female Luer Lug Style Tee White Nylon



FLLE-MSL SERIES

The FLLE-MSL Series is a Male-luer-to-female luer thread-style Elbow connector. Which is made of white & black Nylon, natural Polypropylene, clear Polycarbonate, & Radiation Stable Polycarbonate. Also, separate rotating lock rings are available.

SKU	DESCRIPTION
FLLE-MSL	Male Luer to Female Thread Style Luer Elbow
FLLE-MSL-PP	Male Luer to Female Thread Style Luer Elbow Polypropylene

FLLE- TSEC SERIES



The FLLE-TSEC Series is a Female luer thread-style Elbow connector that is engineered using a variety of high-quality materials. These connectors are available in Nylon, offering robust durability. In addition, they are crafted from natural Polypropylene, known for its chemical resistance and lightweight properties. Furthermore, the series includes connectors made from clear Polycarbonate, providing superior impact resistance and optical clarity. Lastly, the connectors are available in PVDF which is known for its high purity, strength, and resistance to solvents and acids. This material selection ensures that the FLLE-TSEC Series can meet a wide range of application requirements.

SKU	DESCRIPTION
FLLE-WN	Female Luer Lock Elbow White Nylon
FLLE-NPP	Female Luer Lock Elbow Natural Polypropylene
FLLE-PC	Female Luer Lock Elbow Polycarbonate
FLLE-PVDF	Female Luer Lock Elbow PVDF

MSSC SERIES



MSSC Series is a male slip-by male slip luer connector made of white Nylon, natural Polypropylene, clear Polycarbonate, and PVDF. Rotating collars are available.

FLLC-MG SERIES



The FLLC-MG Series is a Female luer lock coupler. It is available in white Nylon, Polypropylene, clear Polycarbonate, radiation Polycarbonate, and PVDF.

SKU	DESCRIPTION
FLLC-MG	Female Luer Lock Connector



FLLPC PANEL MOUNT SERIES

The FLLPC Series is a Panel-mounted female luer lock with a hose barb fitting. Panel mount threads are 1/4-28. The barbs on the inside of the panel are 1/16", 3/32" and 1/8". This luer lock is made of white and black Nylon, natural Polypropylene, clear polycarbonate, and PVDF. Optional color-coded panel rings and nuts are available.

SKU	DESCRIPTION
FLLPC-S-1B	Female Luer Lock to 1/16 Barb Bulkhead
FLLPC-S-2B	Female Luer Lock to 1/8 Barb Bulkhead
FLLPC-S-332B	Female Luer Lock to 3/32 Barb Bulkhead



MLLC SERIES

The MLLC Series is a male luer integral lock ring to female luer. It is available in white and black Nylon, natural Polypropylene, clear Polycarbonate, and Radiation Stable Polycarbonate.

SKU	DESCRIPTION
MLLC	Male Luer Lock to Female Luer Connector



MLL SERIES

Male luer by thread adapter. The bottom sealing threads are available in both UNF and NPT. The lock ring is available as integral or rotating. The integral lock ring luer is available in white and black Nylon, black Acetal, black and natural Polypropylene, clear Polycarbonate, and PVDF. The rotating lock rings are available in 7 colors of Nylon over Polypropylene or PVDF.

SKU	DESCRIPTION
MLL-10	Male Luer Lock to 10/32 UNF Thread
MLL-14-BSR	Male Luer Lock to 1/4-28 UNF Thread Bottom Seal
MLL-2M	Male Luer Lock to 1/8 MNPT
MLL-4M	Male Luer Lock to 1/4 MNPT

MSLE SERIES



Male slip luer by barb Elbow. The barb accommodates 3/32" ID tubing. This luer may be used with a separate rotating lock ring. It is available in white and black Nylon, black Polypropylene, and clear Polycarbonate.

SKU	DESCRIPTION
MSLE	Male Slip Luer Elbow by Barb

FSL & MSL SERIES



The FSL & MSL Series is a Male and Female Slip Luers in clear ABS, white Nylon, clear Polycarbonate, PVDF, and radiation-stable polycarbonate. Barb sizes range from 1/16" to 1/4". 1/4-28 male UNF threads are also available.

SKU	DESCRIPTION
FSL-I-18	Female Slip Luer to White Nylon 1/8 Barb
FSL-MG-116	Female Slip Luer to 1/16 Barb
FSL-MG-332	Female Slip Luer to 3/32 Barb
FSL-MG-18	Female Slip Luer to 1/8 Barb
FSL-S-532	Female Slip Luer to 5/32 Barb
MSL-14	Male Slip Luer to 1/4-28 Male UNF
MSL-MG-116	Male Slip Luer to 1/16 Barb
MSL-MG-332	Male Slip Luer to 3/32 Barb
MSL-MG-18	Male Slip Luer to 1/8 Barb
MSL-S-1B-NK	Male Slip Luer to 1/16 Barb
MSL-S-532	Male Slip Luer to 5/32 Barb
MSL-U-316	Male Slip Luer to 3/16 Barb



FLL UNF SERIES

The FLL series female luers have an integrated filter, making them ideal for filtration applications. The nylon bodies and nylon filters are available in various micron ratings: 10, 30, 48, 70, 100, 140, and 190 microns. This range allows for flexibility in filtration needs, making them suitable for various applications. Polypropylene bodies with Polypropylene filters of 105 or 150 microns are available. These filters come in UNF sizes of 10-32 inch or 1/4-28 inch.

SKU	Description
FLL-14-NK	Female Luer Lock by 1/4-28 UNF PVDF
FLL-14-PP	Female Luer Lock by 1/4-28 UNF Polypropylene
FLL-14-WN	Female Luer Lock by 1/4-28 UNF White Nylon
FLL-14-PC	Female Luer Lock by 1/4-28 UNF Polycarbonate
FLL-1032-K-70N	Female Luer Lock by 10-32 UNF PVDF 70 Micron Nylon
FLL-1032-N-10N	Female Luer Lock by 10-32 UNF Nylon 10 Micron Nylon
FLL-1032-PP-105N	Female Luer Lock by 10-32 UNF Polypropylene 105 Micron Nylon
FLL-18-NK	Female Luer Lock by 1/8 MNPT
FLL-316-NK	Female Luer Lock by 3/16 MNPT

QCD SERIES - LUER DUCKBILL CHECK VALVES



The QCD Series Luer Check Valves are made of Polycarbonate and have a Silicone duck bill. The low cracking pressure is 0.433 psi, which determines when the component starts to open. The OD sizes are 5/64 inch, 7/64 inch, and 9/64 inch. Also available with female and male Luer Locks.

SKU	Description
QCD-564	5/64 inch OD Tubing Polycarbonate Luer Check Valve
QCD-764	7/64 inch OD Tubing Polycarbonate Luer Check Valve
QCD-964	9/64 inch OD Tubing Polycarbonate Luer Check Valve
QCD-FM	Female by Male Luer Lock Polycarbonate Check Valve





METAL QUICK COUPLERS

METAL QUICK COUPLERS

Find the right quick couplers for the job, here at Pneuline Supply! Request a Quote Today!



CHROME-PLATED BRASS QUICK-CONNECTS

CHROME-PLATED BRASS QUICK-CONNECTS

Chrome-Plated Brass Quick-Connects are widely used components ideal for use in higher temperature applications that are easy to connect and disconnect to and from each other as well as to and from tubing. Styles include: Inline, Thumb Latch, Ferruleless, DISS, Panel Mount, Barbed, Socket, and Threaded.



20CB SERIES - FEMALE THREAD PLUG

Female Chrome Plated Brass Thread Plug

NON-VALVED	VALVED	THREAD SIZE	L(nv/v)	WIDTH	HEIGHT
20CB-PB13-1032	20CBV-PB13-1032	10/32" UNF	.63" / 1.35"	.56"	.56"
20CB-PB13-02	NA	1/8" NPT	.95" / N/A	.56"	.56"
20CB-PB13-02BSPT	NA	1/8" BSPT	.95" / N/A	.56"	.56"
20CB-PB13-04	NA	1/4" NPT	1.15" / N/A	.63"	.63"
40CB-PB13-04	40CBV-PB13-04	1/4" NPT	1.25" / 1.90"	.63"	.63"



20CB S12 SERIES

20CB S12 Series are Couplings made of food-grade chrome-plated brass for food industry applications. In addition, the maximum pressure for these couplings is 250psi with a max temperature rating of 180°F.

NON-VALVED	VALVED	THREAD SIZE	LENGTH	WIDTH	HEIGHT
20CB-S12-02	20CBV-SB12-02	1/8" NPT	.62"	.80"	.80"



CBMTP SERIES

Pneuline Supply offers food-grade chrome-plated brass male plugs for use in many different industries. Offering a heat resistance of 180 °F these quick couplers are built to last a while with a robust construction.

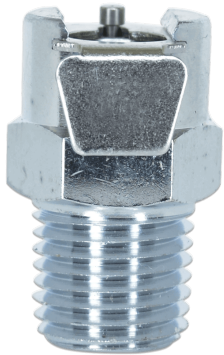
NON-VALVED	VALVED	THREAD SIZE	L(nv/v)	WIDTH	HEIGHT
20CB-PB1-02	20CBV-PB1-02	1/8" NPT	1.05"/1.45"	.50"	.50"
20CB-PB1-02BSPT	20CBV-PB1-02BSPT	1/8" BSPT	1.05"/1.45"	.50"	.50"
20CB-PB1-04	20CBV-PB1-04	1/4" NPT	1.05"/1.45"	.50"	.50"
20CB-PB1-04BSPT	20CBV-PB1-04BSPT	1/4" BSPT	1.05"/1.45"	.50"	.50"
40CB-PB1-04	40CBV-PB1-04	1/4" NPT	1.25"/1.55"	.63"	.63"
40CB-PB1-04BSPT	40CBV-PB1-04BSPT	1/4" BSPT	1.25"/1.55"	.63"	.63"
40CB-PB1-06	40CBV-PB1-06	3/8" NPT	1.25"/1.55"	.75"	.75"
40CB-PB1-06BSPT	40CBV-PB1-06BSPT	3/8" BSPT	1.25"/1.55"	.75"	.75"



CBIH SERIES

Pneuline offers food-grade chrome-plated quick connect plugs for a wide array of industrial applications as well as food industry applications. These quick connects operate at 250psi and are rated for temperatures up to 180 °F.

NON-VALVED	VAIVED	TUBE SIZE	METRIC TUBE	L(nv/v)	WIDTH	HEIGHT
20CB-PB2-02	20CBV-PB2-02	1/8" ID	3.2 MM ID	.98"/1.65"	.63"	.63"
20CB-PB2-03	20CBV-PB2-03	3/16" ID	4.8 MM ID	1.13"/1.80"	.63"	.63"
20CB-PB2-04	20CBV-PB2-04	1/4" ID	6.4 MM ID	1.13"/1.85"	.63"	.63"
40CB-PB2-04	40CBV-PB2-04	1/4" ID	6.4 MM ID	1.30"/1.85"	.63"	.63"
40CB-PB2-05	40CBV-PB2-05	5/16" ID	7.9 MM ID	1.30"/1.85"	.63"	.63"
40CB-PB2-06	40CBV-PB2-06	3/8" ID	9.5 MM ID	1.30"/1.85"	.63"	.63"



CBMTS SERIES

Produced in food-grade chrome plated brass, these 1/8" flow size couplings are more durable and withstand higher pressures. They are available with internal shutoff valves or straight-through.

NON-VALVED	VALVED	THREAD SIZE	LENGTH	WIDTH	HEIGHT
20CB-S1-02	20CBV-SB1-02	1/8" NPT	1.00"	.62"	.80"
20CB-S1-02BSPT	20CBV-SB1-02BSPT	1/8" BSPT	1.00"	.62"	.80"
20CB-S1-04	20CBV-SB1-04	1/4" NPT	1.00"	.62"	.80"
20CB-S1-04BSPT	20CBV-SB1-04BSPT	1/4" BSPT	1.00"	.62"	.80"
40CB-S1-04	40CB-SB1-04	1/4" NPT	1.15"	.86"	.90"
40CB-S1-04BSPT	40CB-SB1-04BSPT	1/4" BSPT	1.15"	.86"	.90"
40CB-S1-06	40CB-SB1-06	3/8" NPT	1.15"	.86"	.90"
40CB-S1-06BSPT	40CB-SB1-06BSPT	3/8" BSPT	1.15"	.86"	.90"



STAINLESS STEEL QUICK-CONNECTS

STAINLESS STEEL QUICK-CONNECTS



QCSPM SERIES

QCSPM Series is a 316 Stainless Steel Bulkhead coupler with a Compression to Push-to-connect Stem. It is available with 1/4" or 3/8" connections. In addition, the temperature ranges from 0° F to 150° F. The maximum working pressure is 150 psi. Therefore, this coupler works well with polyethylene, Nylon, polypropylene, or vinyl tubing. Brass sleeves are available for use with soft metal tubing. The nuts will tighten around the sleeve to prevent twisting of the plastic tubing. In other words, it can be used with dental equipment, pneumatic systems, coolant, and water lines.

SKU	DESCRIPTION
QC-4S-PM-4-SS	SS 1/4" OD Tubing x 1/4" OD Tubing Non-Valved
QC-4S-PM-4-NPB	NP Brass 1/4" O.D Tubing x 1/4" OD Tubing Non-Valved
QC-6S-PM-6-SS	SS 3/8" OD Tubing x 3/8" OD Tubing
QC-6S-PM-6-NPB	SS 3/8" OD Tubing x 3/8" OD Tubing Non-Valved



QCS SERIES

QCS Series has a 316 Stainless Steel Coupler body with a Male NPT threaded connection to a Push-to-Connect stem. Also, the OD sizes are 1/4" and 3/8" and the male threads sizes are 1/8" and 1/4". The temperature range is from 0° F to 150° F. The maximum working pressure is 150 psi. Furthermore, the coupler works well with Polyethylene, Nylon, Polypropylene, or Vinyl Tubing. This coupler is also available in chrome-plated brass.

SKU	DESCRIPTION
QCS-4S-2M-SS	SS 1/4" NPT To 1/8" OD Tubing Socket
QCS-4S-2M-NPB	NP Brass 1/4" NPT To 1/8" OD Tubing Socket
QCS-4S-4M-SS	SS 1/4" NPT To 1/4" OD Tubing Socket Valved
QCS-4S-4M-NPB	NP Brass 1/4" NPT To 1/4" OD Tubing Socket
QCS-6S-6M-SS	SS 3/8" NPT To 1/4" OD Tubing Socket
QCS-6S-6M-NPB	NP Brass 3/8" NPT To 1/4" OD Tubing Socket



QCPN SERIES

QCPN Series is a 316 Stainless Steel Non-Valved through-type Coupler with a Compression connection to a Plug-in Stem. The OD sizes are 1/4" and 3/8". The temperature range is 0° F to 150° F. In fact, the maximum working pressure is 150 psi. This coupler works well with Polyethylene, Nylon, Polypropylene, or Vinyl tubing. This coupler is also available in Chrome-Plated Brass. Also the nuts will rotate around the sleeve to prevent twisting the plastic tubing.

SKU	DESCRIPTION
QCPN-4S-O-4-SS	SS 1/4" OD Tubing x 1/4" OD Tubing Open /Non-Valved
QCPN-4S-O-4-NPB	NP Brass 1/4" OD Tubing x 1/4" OD Open/Tubing Non-Valved
QCPN-6S-O-6-SS	SS 3/8" O.D Tubing x 3/8" OD Tubing Open/Non-Valved
QCPN-6S-O-6-NPB	NP Brass 3/8" OD Tubing x 3/8" OD Open/Tubing Non-Valved



QCPV SERIES

QCPV Series is a 316 Stainless Valve Steel Shut-off Coupler with a Compression connection to a Plug-in Stem. The OD sizes are 1/4" and 3/8". The temperature range is 0° F to 150° F. In fact, the maximum working pressure is 150psi. Also, this Coupler works well with Polyethylene, Nylon, Polypropylene, or Vinyl Tubing. This coupler is also available in Chrome-Plated Brass. The nuts will rotate around the sleeve to prevent twisting the plastic tubing.

SKU	DESCRIPTION
QC-4SV-4-SS	SS 1/4" O.D Tubing x 1/4" OD Tubing Valved
QC-4SV-4-NPB	NP Brass 1/4" OD Tubing x 1/4" OD Tubing Valved
QC-6SV-6-SS	SS 3/8" O.D Tubing x 3/8" O.D Tubing Valved
QC-6SV-6-NPB	NP Brass 3/8" O.D Tubing x 3/8" O.D Tubing Valved



PLASTIC QUICK COUPLERS

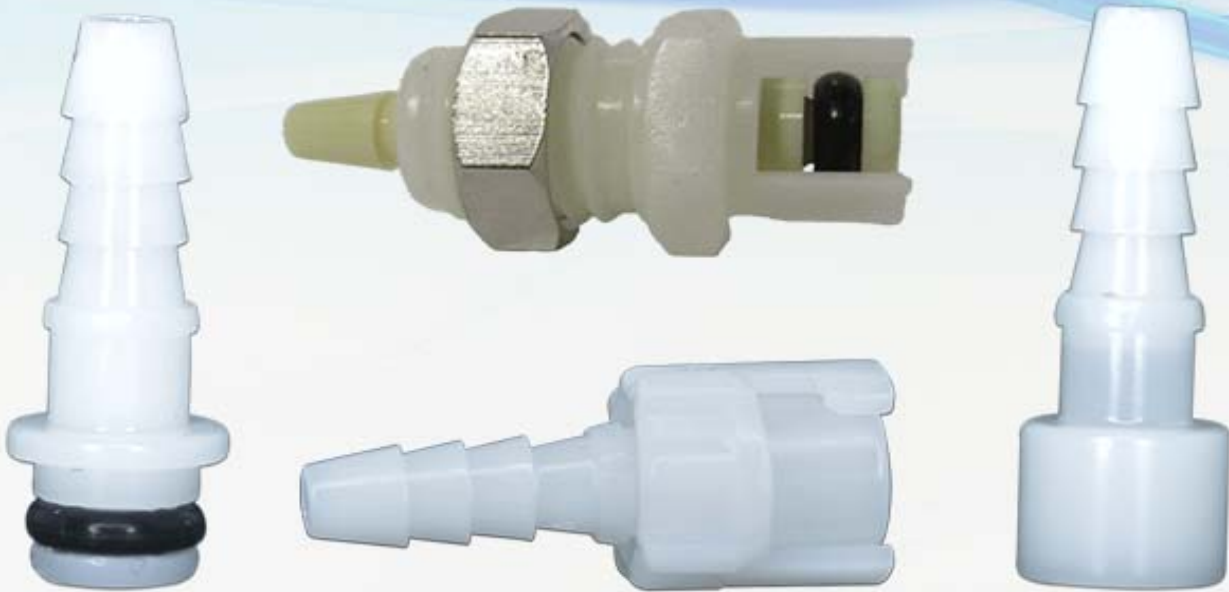
PLASTIC QUICK COUPLERS

Are you looking for a Plastic Quick Coupler with a fast connection? Shop our collection of Acetal or Polypropylene Couplers - Request a Quote Today!



ACETAL QUICK CONNECTS

ACETAL QUICK CONNECTS

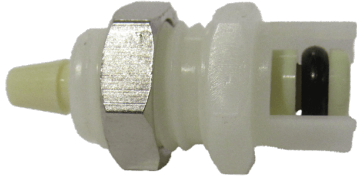


10AC ACETAL QUICK CONNECT

10AC QUICK CONNECT

Discover high-quality acetal plastic quick connectors—available in a 1/16" flow with barbed, panel mount, or threaded options. Find the perfect fit for your application today!

10AC-PB3 SERIES



1/16 Flow Panel Mount Insert, 7/16-24 UNF thread for 1/2 ID thru hole.
Available in 1/16 and 1/8 Barb Size molded from Natural or Black Acetal.

NON-VALVED	TUBE SIZE	LENGTH	WIDTH
10AC-PB2-01	1/16	.75	.50
10AC-PB2-01BLK	1/16	.75	.50
10AC-PB2-02	1/8	.75	.50
10AC-PB2-02BLK	1/8	.75	.50

10AC2 IN LINE SERIES



1/16 Flow, complete inline coupler with 1/16 or 1/8 Barb Sizes or can be 1/16 to 1/8 sizes upon request. Natural or Black Acetal in valved or non-valved combination.

NON-VALVED	VALVED	TUBE SIZE	METRIC TUBE	LENGTH	WIDTH	HEIGHT
10AC2-01	10ACV2-01	1/16" ID	1.6 MM ID	1.46"	.48"	.48"
10AC2-01BLK	10ACV2-01BLK	1/16" ID	1.6 MM ID	1.46"	.48"	.48"
10AC2-02	10ACV2-02	1/8" ID	3.2 MM ID	1.61"	.48"	.48"
10AC2-02BLK	10ACV2-02BLK	1/8" ID	3.2 MM ID	1.61"	.48"	.48"



10AC PB2 SERIES NO SLEEVE

10AC PB2 Series is an Inline Hose Barb Plug, with a 1/16 Flow. The Barb sizes are 1/16 and 1/18 in Natural or Black Acetal. This product is made for use with vacuum lines. For use with the 10AC-S2 series Sockets.

NON-VALVED	TUBE SIZE	METRIC TUBE	LENGTH	WIDTH	HEIGHT
10AC-PB2-01NS	1/16" ID Acetal	1.6" MM ID	.75"	.32"	.32"
10AC-PB2-01NSBLK	1/16" ID Black Acetal	1.6" MM ID	.75"	.32"	.32"
10AC-PB2-02NS	1/8" ID Acetal	3.2" MM ID	.90"	.32"	.32"
10AC-PB2-02NSBLK	1/8" ID Black Acetal	3.2" MM ID	.90"	.32"	.32"



10AC S2 NO SLEEVE SERIES

1/16 Flow Acetal Socket for use with vacuum lines, no collar for coupling. FDA/NSF Buna O-ring

Sizes 1/16 and 1/18 Barb in Natural or Black Acetal both valved and non-valved. For use with 10AC-PB2 series.

10AC-S2-01NS

1/16 Tube ID Socket Vacuum Connector

10AC-S2-01NSBLK	1/16 Tube ID Socket Black Vacuum Connector
10AC-S2-02NS	1/8 Tube ID Socket Vacuum Connector
10AC-S2-02NSBLK	1/8 Tube ID Black Socket Vacuum Connector
10ACV-SB2-01NS	1/16 tube Valved Socket Vacuum Connector
10ACV-SB2-01NS	1/8 tube Valved Socket Vacuum Connector
10ACV-SB2-01NS	1/16 Tube Valved Socket Vacuum Connector Black Acetal
10ACV-SB2-01NS	1/8 Tube Valved Socket Vacuum Connector Black

10AC PB2 ACETAL PLUG BARB



1/16 Flow Acetal quick coupler insert with Twist Lock Barrel design.
Available 1/16 or 1/8 Barb

FDA/NSF Buna O-ring

NON-VALVED	TUBE SIZE	METRIC TUBE	LENGTH	WIDTH	HEIGHT
10AC-PB2-01	1/16" ID	1.6 MM ID	.75"	.48"	.48"
10AC-PB2-01BLK	1/16" ID	1.6 MM ID	.75"	.48"	.48"
10AC-PB2-02	1/8" ID	3.2 MM ID	.90"	.48"	.48"
10AC-PB2-02BLK	1/8" ID	3.2 MM ID	.90"	.48"	.48"

10AC S2 SERIES



Acetal Inline Hose Barb Socket with Twist Lock Barrel

1/16 and 1/8 Barb

NON-VALVED	VALVED	TUBE SIZE	METRIC TUBE	LENGTH	WIDTH	HEIGHT
10AC-S2-01	10ACV-SB2-01	1/16" ID	1.6 MM ID	.90	.48	.48
10AC-S2-01BLK	10ACV-SB2-01BLK	1/16" ID	1.6 MM ID	.90	.48	.48
10AC-S2-02	10ACV-SB2-02	1/8" ID	3.2 MM ID	.90	.48	.48
10AC-S2-02BLK	10ACV-SB2-02BLK	1/8" ID	3.2 MM ID	.90	.48	.48



10AC S3 PANEL MOUNT SERIES

1/16 Flow Panel Mounts Socket are available with Valved or Non-Valved connections. 1/16 and 1/8 Barb Size provided in Natural or Black Acetal. For use with 10AC PB2 series Plugs.

NON-VALVED	VALVED	TUBE SIZE	METRIC TUBE	LENGTH	WIDTH	HEIGHT
10AC-S3-01	10ACV-SB3-01	1/16" ID	1.6 MM ID	.90"	.50"	.58"
10AC-S3-01BLK	10ACV-SB3-01BLK	1/16" ID	1.6 MM ID	.90"	.50"	.58"
10AC-S3-02	10ACV-SB3-02	1/8" ID	3.2 MM ID	.90"	.50"	.58"
10AC-S3-02BLK	10ACV-SB3-02BLK	1/8" ID	3.2 MM ID	.90"	.50"	.58"



20AC ACETAL QUICK CONNECT

20AC QUICK CONNECT

1/8" flow quick connects—precision-engineered from durable acetal for reliable performance and secure connections.



20AC S9 SERIES

20 Series, 1/8 Flow, Socket with Compression Fitting for of 5/32, (.10 ID) and 1/4 OD (.170 ID) Polyethylene or polyurethane tubing.

Available with and w/o Shut off.

Stainless Steel Latch and spring. Nickel Plated Brass compression nut.

NON-VALVED	VALVED	TUBE ID/OD	LENGTH	WIDTH
20AC-S9-025	20ACV-S9-025	3/64 ID/ 5/32 OD	1.65	.62
20AC-S9-04	20ACV-S9-04	.170 ID/ .250 OD	1.75	.62



20AC S8 SERIES

20 Series Socket Panel Mount is designed with a compression fitting suitable for 5/32 inch and 1/4-inch OD Polyurethane Tubing. This product is available with or without a shutoff feature. The compression nut is crafted from nickel-plated brass. The panel mount includes a stainless-steel latch and spring, providing robust performance. The 5/8 hex nut for the panel nut is a nickel-plated brass 1/2-24 UNS thread. Thru hole for the panel is .50 inches. Available with a gasket seal, Buna or EPDM, add GS to the part number.

NON-VALVED	VALVED	TUBE SIZE	METRIC TUBE	LENGTH	WIDTH	HEIGHT
20AC-S8-025	20ACV-SB8-025	5/32" OD, .10" ID	4.0 MM OD, 2.5 MM ID	1.70"	.62"	.80"
20AC-S8-04	20ACV-SB8-04	1/4" OD, .17" ID	6.4 MM OD, 4.3 MM ID	1.72"	.62"	.80"
20AC-S8-025GS	20ACV-SB8-025GS	5/32" OD, .10" ID	4.0 MM OD, 2.5 MM ID	1.70"	.62"	.80"
20AC-S8-04GS	20ACV-SB8-04GS	1/4" OD, .17" ID	6.4 MM OD, 4.3 MM ID	1.72"	.62"	.80"



20AC PB1 NPT SERIES

1/8 Flow, Male insert, with 1/8, or 1/4 Pipe Threads. BSPT optional.

Available with or without shutoff. Buna o-ring.

NON-VALVED	VALVED	THREAD	LENGTH	WIDTH
20AC-PB1-02	20ACV-PB1-02	1/8 NPT	1.03NV/1.36V	.50
20AC-PB1-02BSPT	20ACV-PB1-02BSPT	1/8 BSPT	1.03NV/1.36V	.50
20AC-PB1-04	20ACV-PB1-04	1/4 NPT	1.13NV/1.39V	.50
20AC-PB1-04BSPT	20ACV-PB1-04BSPT	1/4 BSPT	1.13NV/1.39V	.50



20AC PB8 SERIES

1/8 flow 20 series male insert with panel mount and compression fitting for 1/4 OD, .170 ID tubing. Available with and w/o shutoff.

Nickel plated Brass Panel nut. 5/8 Hex with a 1/2-24 UNF thread.



20AC PB3 SERIES

1/8 flow male insert, panel mount coupler available in 1/16, 1/8, 3/16 and 1/4 Barbs. product is made with and w/o shutoff.

Nickel plated Brass Panel nut, 5/8 hex with a 1/2-24 UNS threads. Panel mount thru hole requires .50 inches.

[table "602" not found /]



20AC PB9 SERIES

1/8 Flow Male insert, straight with Compression Fitting. Available 5/32 and 1/4 OD tubing size.

Available with and w/o shutoff.

Nickel-plated Brass nut.

NON-VALVED	VALVED	TUBE ID/ OD	LENGTH	WIDTH
20AC-PB9-025	20ACV-PB9-025	5/64 ID/ 3/32 OD	1.15NV/ 1.65V	.62
20AC-PB9-04	20ACV-PB9-04	.170 ID/ .250 OD	1.15NV/ 1.65V	.62



20AC S3 SERIES

1/8 Flow Socket Panel Mount Barbed

1/16, 1/8, 3/16, 1/4 ID Tube sizes

Valve and Non-valved available

NON-VALVED	VALVED	TUBE SIZE	METRIC TUBE	LENGTH	WIDTH	HEIGHT
20AC-S3-01	20ACV-SB3-01	1/16" ID	1.6 MM ID	1.40"	.62"	.80"
20AC-S3-02	20ACV-SB3-02	1/8" ID	3.2 MM ID	1.65"	.62"	.80"
20AC-S3-03	20ACV-SB3-03	3/16" ID	4.8 MM ID	1.80"	.62"	.80"
20AC-S3-04	20ACV-SB3-04	1/4" ID	6.4 MM ID	1.80"	.62"	.80"
20AC-S3-01GS	20ACV-SB3-01GS	1/16" ID	1.6 MM ID	1.40"	.62"	.80"
20AC-S3-02GS	20ACV-SB3-02GS	1/8" ID	3.2 MM ID	1.65"	.62"	.80"
20AC-S3-03GS	20ACV-SB3-03GS	3/16" ID	4.8 MM ID	1.80"	.62"	.80"
20AC-S3-04GS	20ACV-SB3-04GS	1/4" ID	6.4 MM ID	1.80"	.62"	.80"



20AC S2 SERIES

1/8 Flow, Hose Barb Socket, Acetal with Stainless Steel Release Latch and Spring.

NON-VALVED	VALVED	TUBE SIZE	METRIC TUBE	LENGTH	WIDTH	HEIGHT
20AC-S2-01	20ACV-SB2-01	1/16"	1.6 MM ID	1.42"	.62"	.80"
20AC-S2-02	20ACV-SB2-02	1/8"	3.2 MM ID	1.65"	.62"	.80"
20AC-S2-03	20ACV-SB2-03	3/16"	4.8 MM ID	1.80"	.62"	.80"
20AC-S2-04	20ACV-SB2-04	1/4"	6.4 MM ID	1.80"	.62"	.80"

20AC PB4 SERIES



The 20AC PB4 Series is a Male Quick Coupler with a 1/8 Flow and a 90° Elbow. This product is made from Acetal with a Buna O-ring. Also, the available barb sizes are 1/8 and 1/4 with or without shutoff.

NON-VALVED	VALVED	TUBE SIZE	METRIC TUBE	L(nv/v)	WIDTH	HEIGHT
20AC-PB4-02	20ACV-PB4-02	1/8" ID	3.2 MM ID	.86"/1.19"	.50"	.95"
20AC-PB4-04	20ACV-PB4-04	1/4" ID	6.4 MM ID	.98"/1.19"	.50"	1.10"



20AC S1 SERIES

Quick Coupler Threaded NPT or BSPT. 1/8 Flow Female Socket with Stainless latch and spring.

NON-VALVED	VALVED	THREAD SIZE	LENGTH	WIDTH	LENGTH
20AC-S1-02	20ACV-SB1-02	1/8" NPT	1.00"	.62"	.80"
20AC-S1-02BSPT	20ACV-SB1-02BSPT	1/8" BSPT	1.00"	.62"	.80"
20AC-S1-04	20ACV-SB1-04	1/4" NPT	1.00"	.62"	.80"
20AC-S1-04BSPT	20ACV-SB1-04BSPT	1/4" BSPT	1.00"	.62"	.80"



20AC PB2 SERIES

Acetal Quick Coupler. 1/8 Flow inline Barbed Male Plug in Valved or Non-Valved. The picture shown is a valved unit.

NON-VALVED	VALVED	TUBE SIZE	METRIC TUBE	L(nv/v)	WIDTH	HEIGHT
20AC-PB2-01	20ACV-PB2-01	1/16" ID	1.6 MM ID	.80"/1.48"	.55"	.55"
20AC-PB2-02	20ACV-PB2-02	1/8" ID	3.2 MM ID	.97"/1.65"	.55"	.55"
20AC-PB2-03	20ACV-PB2-03	3/16" ID	4.8 MM ID	1.12"/.80"	.55"	.55"
20AC-PB2-04	20ACV-PB2-04	1/4" ID	6.4 MM ID	1.12"/.80"	.55"	.55"



20AC PB10 SERIES

20AC 1/8 Flow. Acetal Male Plug Elbows quick couplers. Compression sizes of 5/32 OD by .10 ID and 1/4 OD by .170 ID Poly tubing.

Nickel-plated brass nut.

NON-VALVED	VALVED	TUBE SIZE	METRIC TUBE	L(nv/v)	WIDTH	HEIGHT
20AC-PB10-025	20ACV-PB10-025	5/32" OD, .10" ID	4.0 MM OD, 2.5 MM ID	1.09"/1.20"	.50"	.99"
20AC-PB10-04	20ACV-PB10-04	1/4 OD", .17" ID	6.4 MM OD, 4.3 MM ID	1.09"/1.20"	.50"	1.02"



20AC S4 SERIES

1/8 flow Socket with 1/8 or 1/4 hose barbs

Natural Acetal (POM)

Available with or w/o shutoff.

NON VALVED	VAVLED	TUBE SIZE	METRIC TUBE	LENGTH	WIDTH	HEIGHT
20AC-S4-02	20ACV-SB4-02	1/8" ID	3.2 MM ID	1.3"	.63"	1.3"
20AC-S4-04	20ACV-SB4-04	1/4" ID	6.4 MM ID	1.3"	.63"	1.3"



40AC ACETAL QUICK CONNECT

40AC QUICK CONNECT

Explore our 40AC collection—precision-crafted acetal quick connects with a smooth 1/4" flow for reliable performance.

40AC PB4 SERIES



The Quick Coupler Male features a 1/4 flow 90-degree elbow design, crafted with a durable Acetal body and a Buna O-ring for reliable sealing. This versatile coupler is available with either a 1/4 inch or 3/8 inch barb, providing flexibility for various applications. Additionally, it can be supplied with or without a shutoff mechanism, catering to different operational needs.

NON-VALVED	VALVED	TUBE SIZE	LENGTH	WIDTH
40AC-PB4-04	40ACV-PB4-04	1/4 BARBED	1.10NV/1.35V	.63
40AC-PB4-06	40ACV-PB4-06	3/8 BARBED	1.10NV/1.35V	.63



40AC PB9 SERIES

40AC Insert is designed with a reliable compression fitting, making it suitable for both 1/4 inch and 3/8-inch OD Poly Tubing. This insert features a nickel-plated nut, which enhances its durability and resistance to corrosion. The robust construction ensures a secure and leak-free connection, making it ideal for various applications requiring high performance and reliability.

NON-VALVED	VALVED	TUBE ID/OD	LENGTH	WIDTH
40AC-PB9-04	40ACV-PB9-04	.170 ID/ .250 OD	1.25NV/1.89V	.63
40AC-PB9-06	40ACV-PB9-06	.250 ID/.375 OD	1.40NV/1.83V	.63



40AC S18 ACETAL PANEL MOUNT PUSH-IN

1/4 Flow Acetal, Panel Mount for 1/4 OD Tubing

Nickel Plated Nut

Stainless Latch and Spring

NON-VALVED	VALVED	TUBE OD	LENGTH	WIDTH
40AC-S18-04	40AC-S18-04	.250 OD	1.93	.75



40AC PB18 PUSH IN SERIES

The 40AC PB18 Series is a 1/4 Flow Insert Panel Mount with a 1/4 OD push to connect. A 1/4 OD tubing is available with a valve or without. It has a nickel-plated nut.

NON-VALVED	VALVED	TUBE OD	LENGTH	WIDTH
40AC-PB18-04	40ACV-PB18-04	.250 OD	1.88NV/2.03V	.70

40AC PB8 PANEL MOUNT INSERT COMPRESSION



40 Series insert, Panel mount with Compression Fitting. Available with Compression fitting for 1/4 or 3/8 OD tubing.

Nickel-plated brass panel nut and compression fitting

FDA/NSF Buna O-ring.

NON-VALVED	VALVED	TUBE ID/OD	LENGTH	WIDTH
40AC-PB8-04	40ACV-PB8-04	.170 ID/.250 OD	1.77"NV/ 1.91"V	.63
40AC-PB8-06	40ACV-PB8-06	.250 ID/.375 OD	1.90"NV/ 2.04"V	.63

40AC PB16 ACETAL INSERT THREADED ELBOW



40 Series Insert, 90-degree, 1/4 Inch Pipe Thread

Available with and w/o Shut off.

NON-VALVED	VALVED	THREAD	LENGTH	WIDTH
40AC-PB16-04	40ACV-PB16-04	1/4	1.20NV/1.35 V	.70



40AC PB2 SERIES

40 Series Insert with barbs of 1/4, 5/16, and 3/8.

Available with and w/o Shut off.

NON-VALVED	VALVED	BARB	LENGTH	WIDTH
40AC-PB2-04	40ACV-PB2-04	1/4	1.25NV/1.94V	.70
40AC-PB2-05	40ACV-PB2-05	5/16	1.25NV/1.94V	.70
40AC-PB2-06	40ACV-PB-06	3/8	1/25NV/1.94V	.70



40AC S9 SOCKET WITH COMPRESSION FITTING

40 Series, 1/4 flow, Socket with Compression Fitting for of 1/4, and 3/8 OD Polytube.

Available with and w/o Shut off.

Stainless Steel Latch and spring. Nickel Plated Brass compression nut.

NON-VALVED	VALVED	TUBE ID/TUBE OD	LENGTH	WIDTH
40AC-09-04	40ACV-09-04	.170 ID/.250 OD	1.85"	.75"
40AC-09-06	40ACV-09-06	.250 ID/ .375 OD	1.85	.75



40AC S8 PANEL MOUNT COMPRESSION FITTING

40 Series Socket, Panel Mount with Compression Fitting for 1/4 OD and 3/8 OD Tubing.

Available with or without a shut off. Compression Nut is Nickel-Plated Brass. Stainless Steel Latch and spring.

Used with a .688 Thru hole. Nickel Plated Brass Panel nut is a 13/16 Hex with 11/16-24 threads.

NON-VALVED	VALVED	TUBE ID/OD	LENGTH	WIDTH
S40AC-S8-04	S40ACV-S8-04	.170 ID .250 OD	1.87	.75
S40AC-S8-06	S40ACV-S8-06	.250 ID .375 OD	1.87	.75



40AC S3 SERIES

40 Series Socket Panel Mount with barbs of 1/4, 5/16, and 3/8.

Available with and w/o Shut off.

Stainless Steel Latch and spring. Nickel Plated Brass Nut.

NON-VALVED	VALVED	TUBE SIZE	LENGTH	WIDTH
40AC-S3-04	40ACV-S3-04	1/4" BARB	1.90"	.75"
40AC-S3-05	40ACV-S3-05	5/16" BARB	1.90"	.75"
40AC-S3-06	40ACV-S3-06	3/8" BARB	1.90"	.75"



40AC S2 BS SERIES

1/4 flow Socket with barbs of 1/4, 5/16 and 3/8.

Available with and w/o Shut off.

Stainless Steel Latch and Spring.

NON-VALVED	VALVED	BARB SIZE	LENGTH	WIDTH
40AC-S2-04	40ACV-S2-04	1/4" ID	1.90"	.75"
40AC-S2-05	40ACV-S2-05	5/16" ID	1.90"	.75"
40AC-S2-06	40ACV-S2-06	3/8" ID	1.90"	.75"



40AC S1 MALE THREADED SOCKET

40 Series 1/4 flow Socket with 1/4 and 3/8 NPT thread. 1/4 and 3/8 BSPT also.

The product is available with and w/o valved shutoffs.

NON-VALVED	VALVED	THREAD SIZE	LENGTH	WIDTH
40AC-S1-04	40ACV-SB1-04	1/4" NPT	1.15"	.75"
40AC-S1-04BSPT	40ACV-S1-04BSPT	1/4" BSPT	1.15"	.75"
40AC-S1-06	40ACV-S1-06	3/8" NPT	1.15"	.75"
40AC-S1-06BSPT	40ACV-A1-06BSPT	3/8"BSPT	1.15"	.75"



40AC PB3 SERIES - ACETAL PANEL MOUNT HOSE BARB PLUG

40 Series Insert Panel Mount with barbs of 1/4, 5/16, and 3/8.

Available with and w/o Shut off.

Stainless Steel Latch and spring. Nickel Plated Brass nut.

NON-VALVED	VALVED	TUBE SIZE	METRIC SIZE	L(NV/V)	WIDTH	HEIGHT
40AC-PB3-04	40ACV-PB3-04	1/4" ID	6.4 MM ID	1.86"/ 2.01"	.75"	.75"
40AC-PB3-05	40ACV-PB3-05	5/16" ID	7.9 MM ID	1.91"/ 2.05"	.75"	.75"
40AC-PB3-06	40ACV-PB3-06	3/8" ID	9.5 MM ID	1.86"/ 2.01"	.75"	.75"



40AC PB10 PTF SERIES

The 40AC PB10 PTF Series is an Acetal 1/4 Flow, 90-degree male insert with Brass Plated Compression Fitting for use with Plastic Tubing 1/4 OD and 3/8 OD. Inserts available with or w/O valved shutoff. Compatible with all 40 series Couplers.

NON-VALVED	VALVED	TUBE SIZE	METRIC TUBE	L(nv/v)	WIDTH	HEIGHT
40AC-PB10-025	40ACV-PB10-025	5/32" OD, .10" ID	4.0 MM OD, 2.5 MM ID	1.09"/1.20"	.50"	.99"
40AC-PB10-04	40ACV-PB10-04	1/4 OD", .17" ID	6.4 MM OD, 4.3 MM ID	1.09"/1.20"	.50"	1.02"



40AC PB1 SERIES - ACETAL MALE THREAD PLUG

The 40AC PB1 Series is a Male Thread Plug with Pipe Threads of 1/4 and 3/8. This product is produced with a natural Acetal (POM) thermoplastic. Also, BSPT is available and an optional shutoff. Furthermore, this acetal male thread plug offers an easy way to connect NPT threaded piping to other similar quick couplers.

NON-VALVED	VALVED	THREAD SIZE	LENGTH	WIDTH	HEIGHT
40AC-PB1-04	40ACV-PB1-04	1/4" NPT	1.25"/1.65"	.63"	.63"
40AC-PB1-04BSPT	40ACV-PB1-BSPT	1/4" BSPT	1.25"/1.65"	.63"	.63"
40AC-PB1-06	40ACV-PB1-06	3/8" NPT	1.25"/1.65"	.75"	.75"
40AC-PB1-06BSPT	40ACV-PB1-06BSPT	3/8" BSPT	1.25"/1.65"	.75"	.75"



40AC PB17 SERIES

40 Series Insert for use with 1/4 OD tubing. Push-in connection of Acetal thermoplastic.

Available with or w/o valved shutoff.

The operating pressure is 120 psi with a temperature rating of -40° F to 180° F.

NON-VALVED	VALVED	TUBE SIZE	LENGTH	WIDTH	HEIGHT
40AC-PB17-04	40ACV-PB17-04	1/4" OD	1.81"/1.97"	.70"	.70"



50AC ACETAL QUICK CONNECT

50AC QUICK CONNECT

Precision-engineered acetal quick connects—durable, reliable, and built for seamless performance.



50AC PB1 SERIES - THREADED INSERT

50AC Quick Coupler Acetal Fitting Threaded Inserts, Two thread sizes available, 1/4 and 3/8 NPT. For use with the all 50 series female couplers.

Use with either liquid or gas—1/4" diameter flow path

- Acetal (POM) durable body, with FDA/NSF Buna O-rings for durability and compatibility
- Mix and match available to valved and non-valved coupler bodies to meet your flow path.
- Operating Pressure Vacuum to 120 PSI

NON VALVED	Valved	Thread
50AC-PB1-04	50ACV-PB1-04	1/4 MNPT
50AC-PB1-06	50ACV-PB1-06	3/8 MNPT



50AC SERIES PCM ACETAL

This 1/4-inch stem is designed to be compatible with both the 50 Series and PCM Series, making it a versatile choice for various applications. It is specifically engineered for use with Acetal Quick Couplers, ensuring a secure and efficient connection. The high-quality construction of the stem guarantees durability and reliability, making it suitable for demanding environments.



50AC S2 SERIES

50AC All plastic Quick Coupler Body, Acetal Fitting, Three Barb sizes available, 1/4, 5/16, and 3/8. For use with the all-plastic series male inserts only.

Long Body series is offered in Valved and non-valve sockets.

1/4" diameter flow path

- Acetal (POM) durable body, and latch.
- Operating Pressure Vacuum to 120 PSI

NON-VALVED	VALVED	TUBE SIZE	METRIC TUBE	LENGTH	WIDTH	HEIGHT
50AC-S2-04LB	50ACV-SB2-04	1/4" ID	6.4 MM	2.02"	.75"	.94"
50AC-S2-05LB	50ACV-SB2-05	5/16" ID	7.9 MM	2.02"	.75"	.94"
50AC-S2-06LB	50ACV-SB2-06	3/8" ID	9.5 MM	2.02"	.75"	.94"

All Plastic socket with barbed connections for 1/4, 5/16 and 3/8 Tubing



50AC S8 SERIES

50AC S8 Series are acetal 1/4 flow sockets with a plastic thumb latch panel mount, PTF Plastic Tubing: Ferrule-less gripper, for an easy quick-release alternative. Furthermore, the operating pressure of these quick couplers is 120psi and the temperature range is -40 °F to 180°F.

NON-VALVED	VALVED	TUBE SIZE	METRIC TUBE	LENGTH	WIDTH	HEIGHT
50AC-S8-04	50ACV-SB8-04	1/4" OD, .17" ID	6.4 MM OD, 4.3 MM ID	1.97"	.90"	1.05"
50AC-S8-06	50ACV-SB8-06	3/8" OD, .25" ID	9.5 MM OD, 6.4 MM ID	2.10"	.90"	1.05"



50AC-S3 SERIES

50AC-S3 Series with a plastic-latch Quick Couplers has a 1/4" nominal flow. They are made of White Acetal with a plastic thumb latch coupler and a Buna O-ring insert standard. Also, the temp ranges are -40° F to 180°F for Acetal.

NON-VALVED	VALVED	TUBE SIZE	METRIC TUBE	LENGTH	WIDTH	HEIGHT
50AC-S3-04	50ACV-SB3-04	1/4" ID	6.4" MM ID	2.10"	.90"	1.05"
50AC-S3-05	50ACV-SB3-05	5/16" ID	7.9" MM ID	2.10"	.90"	1.05"
50AC-S3-06	50ACV-SB3-06	3/8" ID	9.5" MM ID	2.10"	.90"	1.05"



50AC S1 SERIES

50AC S1 Series is a plastic-latch quick-coupler that has a 1/4" nominal flow. They are made of acetal. These units are available in male pipe thread, Barb and ferrule-less polytube connectors (PFT), and push-in connectors. Coupler bodies and inserts are open flow as a standard, with optional shutoff units. O-rings are FDA/NSF Grade Buna Temperature range is -40° F to 180° F and the pressure rating is 120 psi. Available in Polypropylene.

NON-VALVED	VALVED	THREAD SIZE	LENGTH	WIDTH	HEIGHT
50AC-S1-04	50ACV-SB1-04	1/4 NPT	1.40	.75	.94
50AC-S1-06	50ACV-SB1-06	3/8 NPT	1.40	.75	.94



POLYPROPYLENE QUICK CONNECTS

POLYPROPYLENE QUICK CONNECTS

Pneuline Supply offers a wide variety of different quick connects constructed from medical grade, gamma sterilizable polypropylene.



TL SERIES

TL Series, a meticulously crafted plastic thumb latch, seamlessly combines form and function. 5/32 size available.



20 IHBS SERIES

Quick Coupler. Grey chemical-resistant Polypropylene, 1/8 Flow.



50PPV SE3 SERIES

The 50PPV SE3 Series is made with a medical grade, gamma sterilizable polypropylene these couplers are ideal for medical applications where greater chemical resistance is needed. In addition, this coupler has a plastic thumb latch for a comfortable release every time!

VALVED	TUBE SIZE	METRIC TUBE	LENGTH	WIDTH	HEIGHT
50PPV-SE3-04	1/4" ID	6.4 MM ID	2.14"	1.00"	.94"
50PPV-SE3-06	3/8" ID	9.5 MM ID	2.14"	1.00"	.94"

50PPV SE3 SERIES

PART NO.	MATERIAL	DIAMETER	THICKNESS
C11376	EPDM	1.00" OD	.08"



20PP PE2 SERIES

The 20PP PE2 Series is made from medical-grade gamma sterilizable polypropylene, offering greater chemical resistance. In addition, this material has a temperature range of 32°F to 160°F and a max operating pressure of 120psi.

NON-VALVED	VALVED	TUBE SIZE	METRIC TUBE	L(nv/v)	WIDTH	LENGTH
20PP-PE2-01	20PPV-PE2-01	1/16" ID	1.6 MM ID	.80"/1.48"	.55"	.55"
20PP-PE2-01MALD	20PPV-PE2-01MALD	1/16" ID	1.6 MM ID	.80"/1.48"	.55"	.55"
20PP-PE2-02	20PPV-PE2-02	1/8" ID	3.2 MM ID	.97"/1.65"	.55"	.55"
20PP-PE2-02MALD	20PPV-PE2-02MALD	1/8" ID	3.2 MM ID	.97"/1.65"	.55"	.55"
20PP-PE2-04	20PPV-PE2-04	1/4" ID	6.4 MM ID	1.12"/1.80"	.55"	.55"
20PP-PE2-04MALD	20PPV-PE2-04MALD	1/4" ID	6.4 MM ID	1.12"/1.80"	.55"	.55"

NON-VALVED	VALVED	TUBE SIZE	METRIC TUBE	L(nv/v)	WIDTH	LENGTH
40PP-PE2-04	40PPV-PE2-04	1/4" ID	6.4 MM ID	1.25"/1.94"	.70"	.70"
40PP-PE2-04MALD	40PPV-PE2-04MALD	1/4" ID	6.4 MM ID	1.25"/1.94"	.70"	.70"
40PP-PE2-06	40PPV-PE2-06	3/8" ID	9.5 MM ID	1.25"/1.83"	.70"	.70"
40PP-PE2-06MALD	40PPV-PE2-06MALD	3/8" ID	9.5 MM ID	1.25"/1.83"	.70"	.70"
50PPX-PE2-04	50PPV-PE2-04	1/4" ID	6.4 MM ID	1.89"/2.04"	.70"	.70"
50PPX-PE2-06	50PPV-PE2-06	3/8" ID	9.5 MM ID	1.76"/1.91"	.70"	.70"



GP-IHBS SERIES

Discover the reliability of our grey medical-grade polypropylene inline hose barb sockets, designed for seamless compatibility with quick coupling adapters. Crafted from gamma-sterilizable polypropylene, they offer superior chemical resistance for demanding applications.

VALVED	TUBE SIZE	METRIC TUBE	LENGTH	WIDTH	HEIGHT
50PPV-SE2-04	1/4" ID	6.4 MM ID	2.01"	.76"	.94"
50PPV-SE2-06	3/8" ID	9.5 MM ID	2.01"	.76"	.94"



GP-MTP SERIES

Engineered for reliability, this male thread plug is crafted from medical-grade, gamma-sterilizable polypropylene, ensuring superior chemical resistance. Designed with NPT threads, it comes in both valved and non-valved versions, available in grey or natural hues.

NON-VALVED	VALVED	THREAD SIZE	L(nv/v)	WIDTH	HEIGHT
20PPX-PE1-02	20PPV-PE1-02	1/8" NPT	1.27"/1.39"	.50"	.50"
20PPX-PE1-02MALD	20PPV-PE1-02MALD	1/8" NPT	1.27"/1.39"	.50"	.50"
40PPX-PE1-04	40PPV-PE1-04	1/4" NPT	1.50"/1.65"	.63"	.63"
40PPX-PE1-04MALD	40PPV-PE1-04MALD	1/4" NPT	1.50"/1.65"	.63"	.63"
50PPX-PE1-04	50PPV-PE1-04	1/4" NPT	1.60"/1.75"	.63"	.63"
50PPX-PE1-06	50PPV-PE1-06	3/8" NPT	1.60"/1.75"	.75"	.75"

SBLF AND SBLM SERIES



SBLF and SBLM are quick-connect couplers that have a side latch. It is available in several colors of Nylon and is equipped with Buna-N O-rings. Single barb sizes available are 1/8" and 3/16".

SKU	DESCRIPTION
LDF-LDPE	Female LDPE Lab Disconnect
LDF-PP	Female Polypropylene Lab Disconnect
LDF-PP-CLR	Female Polypropylene Clear Lab Disconnect
LD-F-LDPE	Male/Female LDPE Complete Lab Disconnect
LD-M-LDPE	Male LDPE Lab Disconnect
LD-M-NB-PP	Male No-Barb Polypropylene Lab Disconnect