



CHECK VALVES

CHECK VALVES

Pneuline offers a wide variety of check valves in multiple sizes, materials, and flow rates. Browse Products now and find the perfect fit for your application needs.



METAL CHECK VALVES

METAL CHECK VALVES

Metal inline valves of brass, aluminum, and stainless steel are provided in ball check, piston, and poppet styles. These valves are used in agricultural, food, beverage water, and medical applications. Most products are made with varying thread designs.



BALL CHECK VALVES

BALL CHECK VALVES

Ball Check Valves can be utilized in many applications. They are used for preventing backflow in a pipeline system.

BLC SERIES



BLC Ball check valves. Brass and 303 Stainless Steel bodies in three sizes: 10-32 Unf Female, 1/8 MNPT, and 1/4 MNPT.

Also adapters of 1/8 Female to 1/8 Male and 1/4 Fnpt by 1/4 Mnpt.

304 Ball and springs of 2, 10, 15 PSI Cracking pressure for except 1/4 size is not available with 10 PSI

SKU	Description
BLC-1032F-2	10-32 Female 2 psi Brass Check Valve
BLC-1032F-10	10-32 Female 10 psi Brass Check Valve
BLC-1032F-15	10-32 Female 15 psi Brass Check Valve
BLC-18M-2	1/8 inch Male to Male Brass 2 psi Chec k Valve
BLC-18F18M-2	10-32 Female 2 psi Brass Check Valve
BLC-18F18M-SS	1/8 inch Female to Male Stainless Steel Check Valve No Spring
BLC-18F18M-10	1/8 inch Female to 1/8 inch Male Brass Check Valve 10 PSI
BLC-18F18M-SS-10	1/8 inch Female to Male 303 Stainless Steel 10 psi Check Valve
BLC-14-15	1/4 inch Male to Male Brass Check Valve 15 psi

SBCV 3000 SERIES



Brass Ball check valves with maximum operating pressure of 3000 PSI. 1/4 MNPT, or 1/4 FNPT Inlet and Outlet.

3/8 MNPT, or 3/8 FNPT Inlet and Outlet.

Seals of Buna/EPDM, and FKM. Electroless nickel plating is optional. Overall cracking pressure is .5 PSI, 1, 3, 6, or 10 PSI standard.

[table "PSCV3000" not found /]

EVCK SERIES- BALL CHECK VALVE



Our EVCK Series Anti-Siphon Ball Check Valves for gasoline applications. These Brass valves are available 1/4 NPTF by 1/4, 5/16 or 3/8 Barb, 1/4 NPTF by 1/4 or 3/8,

45 % Male Flare, 1/4 NPTF by 1/4 NPTF and 1/4 NPTF by 1/4 NPTF Female. These 1/4 valves offer a 30 GPH flow at -1.5 PSI

The 3/8 NPTF threads offer a flow of 50 GPH at -1.5 PSI. The sizes are 3/8 Male NPTF by 3/8, 1/2 or 5/8 Hose Barb. 3/8 Male NPTF by 3/8 Male Flare 45%, 3/8 NPTF both ends, and a 3/8 Male NPTF by 3/8 NPTF Female threads.

1/2 Inch connections offer a 75 GPH Flow Rate at -1.5 PSI. Sizes are 1/2 Male NPTF by 3/8 or 1/2 Hose Barb or 1/2 Male NPTF both ends that is available only in brass.

Available in Brass or Aluminium (except Flare fittings) with 300 Stainless Steel ball seats, ball and springs.

SKU	Description
EVCK-4M	1/4 inch Male by 1/4 inch Male Ball Check Valve
EVCK-4M4B-B	1/4 inch Male by 1/4 inch Barb Ball Check Valve
EVCK-4M4B-AL	1/4 Inch Male by 1/4 inch Barb Ball Check Valve Aluminum
EVCK-4M5B	1/4 inch Male by 5/16 inch Barb Ball Check Valve
EVCK-4M6B	1/4 inch Male by 3/8 inch Barb Ball Check Valve
EVCK-4M4F	1/4 inch Male by 1/4 inch Female Ball Check Valve
EVCK-6M	3/8 inch Male by 3/8 inch Male Ball Check Valve
EVCK-6M6B	3/8 inch Male by 3/8 inch Barb Ball Check Valve
EVCK-6M8B	3/8 inch Male by 1/2 inch Barb Ball Check Valve
EVCK-6M10B	3/8 inch Male by 5/8 inch Barb Ball Check Valve
EVCK-6M6F	3/8 inch Male by 3/8 inch Female Ball Check Valve
EVCK-8M	1/2 inch Male by 1/2 inch Male Ball Check Valve (brass only)
EVCK-8M6B-AL	1/2 inch Male by 3/8 inch Barb Ball Check Valve (aluminum only)
EVCK-8M8B	1/2 inch Male by 1/2 inch Barb Ball Check Valve (Brass Only)

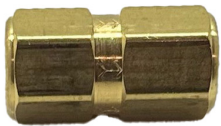


CMCV SERIES

The CMCV Series Brass Ball Check Valves are compression fittings. This series has Tube OD of 1/8 inch, 1/4 inch, and 3/8 inch. Male NPT thread sizes of 1/8 inch and 1/4 inch are available. The working pressure for the 1/8 inch tube OD is 400 psi, for the 1/4 inch it is 300 psi, and for the 3/8 inch, it is 200 psi. The temperature range is -65° F to 250° F at maximum operating pressures.

SKU	Description
CMCV-14C2M	1/4 inch by 1/8 inch NPT 3 psi Brass Compression Check Valve
CMCV-18C2M	1/8 inch Brass 3 psi by 1/8 inch NPT Brass Compression Check Valve
CMCV-2M14C	1/8 inch NPT by 1/4 inch OD tube 3 psi Brass Compression Check Valve
CMCV-2M18C	1/8 inch NPT by 1/8 inch OD Tube 3 psi Brass Compression Check Valve
CMCV-38C4M	3/8 inch OD tube 3 psi by 1/4 inch NPT Brass Compression Check Valve
CMCV-4M38C	1/4 inch NPT by 3/8 inch OD tube, 3 psi Brass Compression Check Valve

BCV SERIES



The BCV .187 flow thru Series is a Brass Ball Check Valve, with inlet and outlet sizes of 1/4 inch MNPT both ends, 1/4 inch Male Flare both ends, or a 1/4 MNPT to 1/4 FNPT flow only. This Check Valve has no elastomers to create a seal. It will have a positive seal only at high back pressure, so some leakage may bi-pass the seat in low-pressure applications. The cracking pressure on the 302 Stainless Steel spring is 1 psi (standard), 3, 5, 10, 14 and 18 psi. Maximum operating pressure is 2500 psi and the maximum operating temperature is 250° F.

The .280 flow thru series is available in 1/4 or 3/8 inch Male and Female NPT threads, and sealing materials are Buna, EPDM or Fluoroelastomer. The cracking pressure on the 302 Stainless Steel spring is 1/2 psi, 1 (standard), 3, 6, 10, 30, 40, 55 and 70 psi. The maximum operating pressure is 3000 psi and the maximum operating temperature is 250° F for Buna seals. These Check Valves are designed for high press applications up to 3000 PSI.

SKU	Description
BCV-14MF-1	1/4 inch MNPT by 1/4 inch MFNPT Ball Check Valve 1 # Spring No Seals
BCV-14M-5	1/4 inch MNPT by 1/4 inch MNPT Ball Check Valve No Seals
BCV-14M-303-5	1/4 inch MNPT by 1/4 inch MNPT Ball Check Valve SS 5# Spring No Seals
SBCV-14M-5-B	1/4 inch MNPT Ball Check 5# spring Buna Seal
SBCV-14F-1-E	1/4 inch FNPT Ball Check Valve 1# spring EPDM
SBCV-38F-1/3-E	3/8 inch FNPT Ball Check Valve 1/3 # Spring EPDM
SBCV-38M-5-V	3/8 inch MNPT Ball Check Valve 5# Spring Fluoroelastomer
SBCV-12M-5-V	1/2 inch MNPT Ball Check Valve 5# Spring Fluoroelastomer
SBCV-12F-1-E	1/2 inch FNPT Ball Check Valve 1# spring EPDM
SBCV-12FM-5-V	1/2 inch FNPT by 1/2 inch MNPT Ball Check Valve 5# Spring Fluoroelastomer
SBCV-12MF-5-E	1/2 inch MNPT by 1/2 inch FNPT Ball Check Valve 5# Spring EPDM
SBCV-34F-5-V	3/4 inch FNPT Ball Check Valve, 5# Spring, Fluoroelastomer only



METAL PISTON CHECK VALVES

METAL PISTON CHECK VALVES

Pneuline offers Metal Piston Check Valves perfect for Industrial applications, Power plants, and High-temperature services. Metal Piston Check Valves are Gravitational closure and quick closing.

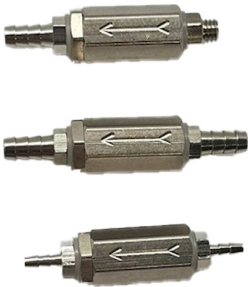
CLCV SERIES - BRASS CHECK VALVES



The CLCV Series Brass Check Valves have 10-32 inch ports, a Nitrile seal, and a Stainless Steel spring. It permits flow in only one direction and is used for air and hydraulics. The input psi is 300 maximum. The crack pressure is 1/2 psi and the temperature range is 32° F to 230° F. The 1/8-inch valve has a maximum input pressure of 1000 psi. Otherwise, all other attributes are the same as the 10-32 inch valve.

SKU	Description
CLCV-10F10F	10-32 Female to Female Brass Poppet Check Valve
CLCV-10F10M	10-32 Female to Male Brass Poppet Check Valve
CLCV-10M10M	10-32 Male to Male Brass Poppet Check Valve
CLCV-10M10F	10-32 Male to Female Brass Poppet Check Valve
CLCV-18F	1/8 inch Female to Female Brass Poppet Check Valve

BPCV SERIES



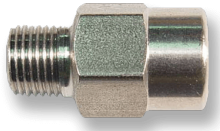
The BPCV Series Brass Piston Check Valves with nickel plate, are available with 10/32 Female UNF threads. Added to this main configuration is male 10/32 fittings or 1/16, 1/8, 3/32, inch barbs added.

Seal options are Buna-N, EPDM and Viton®. Spring materials are Stainless Steel or Hastelloy. The valve is also available without a spring. The maximum operating pressure is 125 psi. The flow rate is 2.5 SCFM at 50 psi. Larger size made from machined brass are 1/8, 3/16, 1/4 and 5/16 barbs. These larger sizes, see optional products in the gallery, will handle 125 PSI.

SKU	Description	Inlet	Outlet
BPCV-1032F-NS	Brass Piston No Spring	10/32 F	10/32 F
BPCV-10M10F-1-B	Brass Piston 1 PSI, Buna Seals	10/32 Male	10/32 Female
BPCV-10M10F-4.5-EPDM	Brass Piston 4.5 PSI EPDM Seals	10/32 Male	10/32 Female

SKU	Description	Inlet	Outlet
BPCV-10F1B-1-EPDM	Brass Piston 1 PSI EPDM Seals	10/32 Female	1/16 Barb
BPCV-332B-10M-H1-V	Brass Piston Check Valve, 1PSI, Hastelloy FKM	3/32 Barb	10/32 Male
BPCV-1B-332B-1-B	Brass Piston 1 PSI EPDM Seals	1/16 Barb	3/32 Barb
BPCV-2B-E1	Brass Piston 1 PSI EPDM Seals	1/8 Barb	1/8 Barb
BPCV-2B-H1-V	Brass Piston Check Valve, 1PSI, Hastelloy FKM	1/8 Barb	1/8 Barb
BPCV-3B3B-E1	Brass Machined 3/16 Piston 1 PSI EPDM	3/16 Barb Machined	3/16 Barb Machined
BPCV-5B5B-H4.5-V	Brass Machined Piston 4.5 Hastelloy FKM	5/16 Barb Machined	5/16 Barb Machined

PSCV SERIES



The PSCV Series Brass or Stainless Steel Piston Check Valves ensures a positive bubble-tight seal. They have a cracking pressure of 1 psi, a maximum pressure of 500 psi, and a maximum working temperature of 250° F. The standard unit is Brass with a 302 Stainless Steel spring and Steel retainer. Optional springs of 3, 5, 9, 15, 20, 25 psi. Also available in a 316 Stainless Steel body (shown) with a Hastelloy® spring. 1, 3, 15, and 25 psi. Seals available are Buna, EPDM, or FKM.

SKU	Description
PSCV-12F	1/2 FNPT Brass Piston Check Valve with Buna Seal
PSCV-14F	1/4 FNPT Brass Piston Check Valve with Buna Seal
PSCV-14FM	1/4 FNPT 1/4 MNPT Brass Piston Check Valve
PSCV-14M	1/4 MNPT Brass Piston Check Valve
PSCV-18F	1/8 FNPT Brass Piston Check Valve
PSCV-18FM	1/8 FNPT 1/8 MNPT Brass Piston Check Valve
PSCV-18M	1/8 MNPT Brass Piston Check Valve
PSCV-34F	3/4 FNPT Brass Piston Check Valve
PSCV-38F	3/8 FNPT Brass Piston Check Valve
PSCV-38FM	3/8 FNPT 3/8 MNPT Brass Piston Check Valve
PSCV-18F-SS	1/8 FNPT 316 Stainless Steel Piston Check Valve
PSCV-18FM-SS	1/8 FNPT 1/8 MNPT 316 Stainless Steel Piston Check Valve
PSCV-34F-SS	3/4 FNPT 316 Stainless Steel Piston Check Valve





METAL POPPET CHECK VALVES

METAL POPPET CHECK VALVES

Discover premium metal poppet check valves—engineered for durability, reliability, and optimal performance. Our valves are built to withstand tough conditions and ensure smooth, efficient flow control.

NCV CHECK VALVE SERIES



The NCV Series Nickel-Plated Brass Poppet Check Valve has options of Buna-N, EPDM or FKM seals. The operating pressure is 0 to 125 psi and the flow rate ranges from 2.5 to 9.5 scfm. Input and output port sizes are 10-32 inch UNF and 1/16 inch Barb.

SKU	Description
NCV-10F10F	10-32 Female to Female Nickel-Plated Poppet Check Valves
NCV-10F10M	10-32 Female to Male Nickel-Plated Poppet Check Valves
NCV-10F1B	10-32 Female 1/16 inch Barb Nickel-Plated Poppet Check Valves
NCV-10M10F	10-32 Male to Female Nickel-Plated Poppet Check Valves
NCV-10M1B	10-32 Male 1/16 inch Barb Nickel-Plated Poppet Check Valves
NCV-1B1B	1/16 inch Barb to 1/16 inch Barb Nickel-Plated Poppet Check Valves

PPCV SERIES



The PPCV Series Brass Poppet Check Valve has inlet sizes of 1/8, 1/4, 3/8, 1/2, 3/4 and 1 Inch Female NPT threads.

Also available in 3/8, and 1/2 inch Male NPT threads.

Outlet sizes are 1/4 inch, 3/8 inch, 1/2 inch, 3/4 inch, 1 Inch Female NPT threads.

Flare fittings are 1/4 inch and 3/8 inch Male Flare, and 1/4 inch Female Flare.

Seal options are Buna-N, EPDM and Viton®.

The cracking pressure on the 302 Stainless Steel spring is 1 psi (standard). Maximum operating pressure is 500 PSI for the 1/8 size.

1200 PSI for all the other sizes. The maximum operating temperature is 180° F.

Two sizes of valves, the 3/8 FNPT and the 1-inch FNPT are available in 303 stainless.

SKU	Description
PPCV-18M	1/8 inch MNPT Brass Poppet Check Valve
PPCV-14MFL	1/4 Male Flare to 1/4 Male Flare Brass Poppet Check Valve
PPCV-18M14MFL	1/8 inch MNPT to 1/4 Male Flare Brass Poppet Check Valve
PPCV-14MFL18M	1/4 Male Flare to 1/8 MNPT Brass Poppet Check Valve
PPCV-14MFL18M-NP	1/4 Male Flare to 1/8 MNPT Nickel Plated Brass Poppet Check Valve
PPCV-14F	1/4 inch Female Brass Poppet Check Valve
PPCV-14F-1-V	1/4 inch Female Brass Poppet Check Valve <1 psi FKM Seals
PPCV-14F14MFL	1/4 FNPT to 1/4 Male Flare Brass Poppet Check Valve
PPCV-38MFL	3/8 Male Flare Brass Poppet Check Valve
PPCV-38MF	3/8 MNPT to 3/8 FNPT Brass Poppet Check Valve
PPCV-38F	3/8 FNPT to 3/8 FNPT Brass Poppet Check Valve
PPCV-38F-316SS-V	3/8 FNPT to 3/8 FNPT 316 with Fluorolastomer Seal
PPCV-12M38F	1/2 MNPT to 3/8 FNPT Brass Poppet Check Valve
PPCV-12F	1/2 inch Female Brass Poppet Check Valve
PPCV-12MF	1/2 inch Male 1/2 inch Female Brass Poppet Check Valve
PPCV-34F	3/4 inch Female Brass Poppet Check Valve
PPCV-34M	3/4 inch Male Brass Poppet Check Valve
PPCV-16F-E	1 inch FNPT to 1 inch FNPT Brass with EPDM Seal
PPCV-16F-316SS-v	1 Inch FNPT to 1 Inch FNPT 316 with Fluoroelastomer Seal



PLASTIC CHECK VALVES

PLASTIC CHECK VALVES

Plastic check valves are used for a diverse range of applications. Transportation, chemical, car wash systems, water applications, pools and spas, medical equipment, and biopharmaceutical applications. The types of valves are various for the application. Diaphragm valves, duckbill valves, poppet valves, ball & spring known as ball checks, and Self-closing valves. Inline valves come in a number of thread and barb sizes, and for medical devices requiring luers, ISO 594 and 80369-7 and bond-in tubing sizes.



CARTRIDGE CHECK VALVES

CARTRIDGE CHECK VALVES

A Cartridge Valve is used to allow flow in one direction while stopping oil/ pressure in the opposite direction.



CRV SERIES - CARTRIDGE INSERT VALVES

These Cartridge Insert Valves can be installed into tubing lines or glued into manifolds. The optional housing materials are Nylon, Polypropylene, Acrylic, Acetal, PVDF, and Polycarbonate. Springs are 316 Stainless Steel or Hastelloy® (1/2 psi). O-Rings are of Buna-N, EPDM, FKM, Silicone and Kalrez. Available sizes are 1/4", 5/16", 3/8", 1/2", 5/8" and 3/4" OD. Standard crack pressure for all valves except 3/4" OD is 3" H₂O 0.1 psi, 5 psi, or 1.5 psi.

SKU	DESCRIPTION
CRV-12-11-PPB	1/2" Polypropylene / Buna Seals 11 psi Insert Valve
CRV-14-10PPE	1/4" Polypropylene / EPDM 10 psi Insert Valve
CRV-14-3-PPE	1/4" Polypropylene / EPDM 3 psi Insert Valve
CRV-14-PB-.5	1/4" Polypropylene / Buna .5 psi Insert Valve
CRV-14-PB-1	1/4" Polypropylene / Buna 1 psi Insert Valve
CRV-14-PB-1.5	1/4" Polypropylene / Buna 1.5 psi Insert Valve
CRV-14-PB-2	1/4" Polypropylene / Buna 2 psi Insert Valve
CRV-14-PE-.1	1/4" Polypropylene / EPDM .1 psi Insert Valve
CRV-14-PV-.1	1/4" Polypropylene / FKM .1 psi Insert Valve
CRV-14-PV-.5	1/4" Polypropylene / FKM .5 psi Insert Valve
CRV-14-PV-1	1/4" Polypropylene / FKM 1 psi Insert Valve
CRV-14-PV-10	1/4" Polypropylene / FKM 10 psi Insert Valve
CRV-14-PV-2	1/4" Polypropylene / FKM 2 psi Insert Valve
CRV-14-PV-5	1/4" Polypropylene / FKM 5 psi Insert Valve
CRV-38-2-PPV	3/8" Polypropylene / FKM 2 psi Insert Valve
CRV-38-PB-7.5 WC	3/8" Polypropylene / Buna 7.5 WC Insert Valve
CRV-38-PPB-1	3/8" Polypropylene / Buna 1 psi Insert Valve
CRV4-1/10-NB	1/4" 1/10 Nylon / Buna Insert Valve
CRV4-1/2H-PPV	1/4" 1/2# Hastelloy® Polypropylene / FKM O-Ring Insert Valve
CRV4-10PPE	1/4" 10# Polypropylene / EPDM Insert Valve
CRV4-4PPB	1/4" 4# Polypropylene / Buna Insert Valve
CRV-4-P-V-.5	1/4" Polypropylene / FKM .50 psi Insert Valve
CRV-4-P-V-1	1/4" Polypropylene / FKM 1 psi Insert Valve
CRV-4-PV-6WC	1/4" Polypropylene / FKM 6 inch WC Insert Valve
CRV-4-WP-V-.25	1/4" Polypropylene / FKM .25 psi Insert Valve
CRV-4-WP-V-.5	1/4" Polypropylene / FKM .50 psi Insert Valve
CRV532-14PC	5/32" 14# Polycarbonate Insert Valve
CRV-532-2.5PC	5/32" 2.5# Polycarbonate Insert Valve
CRV-532-2PC	5/32" 2# Polycarbonate Insert Valve
CRV532-4 P	5/32" 4# Polycarbonate Insert Valve



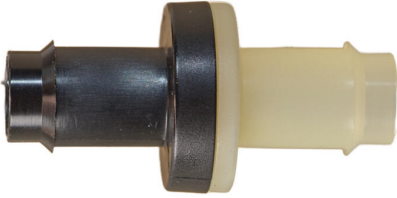


DIAPHRAGM CHECK VALVES

DIAPHRAGM CHECK VALVES

Check Valves: Diaphragm Check Valves
Pneuline 100% Leak Tests all MPV Series Check Valves in-house.

MPV 6B SERIES



The MPV-6B Series is built for systems that require **maximum flow capacity** paired with dependable one-directional control. Featuring a **3/8" barbed** connection and a high-flow internal architecture, this valve supports significantly increased throughput while maintaining tight, reliable sealing. Each unit is subjected to **100% leak-decay testing** in our controlled production environment to ensure long-term performance and consistency.

Durable Body Material Options: choose from a range of high-performance resins engineered for chemical resistance, mechanical strength, and environmental durability:

- **Kynar® (PVDF)**
- **Nylon** (*glass-filled grade available*)
- **Acetal Celcon® M90**
- **Polycarbonate**
- **Polypropylene**

Diaphragm Material Options Select the diaphragm material that best aligns with your application's compatibility and performance needs:

- **EPDM**
- **Viton®**
- **Fluorosilicone**
- **Kalrez®**
- **Silicone USP Class VI**
- **FDA-grade Viton®**

Engineered for Customization

For applications with unique flow, compatibility, or regulatory requirements, we offer **custom molding** and fully configurable resin/diaphragm combinations. Our engineering team works closely with you to develop solutions tailored to your system's exact specifications.

Optimized for High-Demand, High-Flow Applications

With its enlarged barb size, high-flow design, and purity-focused construction, the MPV-6B Series is ideal for medical devices, laboratory systems, industrial equipment, and high-purity fluid handling environments where elevated flow rates are essential.

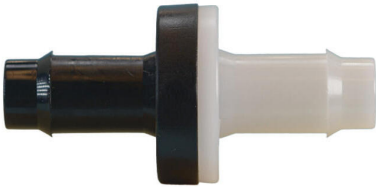
[Flow and Crack Pressure Chart- High Flow](#)

Need more information or looking to tailor one of our valves for a specific application?

Complete the form below and our team will promptly connect with you to discuss your requirements and ensure you get the right solution.

[Contact Form](#)

MPV 5B SERIES



The MPV-5B Series is designed for systems that demand **greater flow capacity** and consistent one-directional control. With its **5/16" barbed** connection and optimized high-flow internal geometry, this valve supports increased throughput while maintaining dependable sealing performance. Every unit is subjected to **100% leak-decay testing** within our controlled production environment to ensure reliability from the first cycle to the last.

Versatile Body Material Options: Choose from a range of durable, engineering-grade resins to match your chemical and mechanical requirements:

- **Kynar® (PVDF)**
- **Nylon** (*glass-filled grade available*)
- **Acetal Celcon® M90**
- **Polycarbonate**
- **Polypropylene**

Diaphragm Material Selections Dial in the ideal balance of compatibility, flexibility, and performance with multiple diaphragm choices:

- **EPDM**
- **Viton®**
- **Fluorosilicone**
- **Kalrez®**
- **Silicone USP Class VI**
- **FDA-grade Viton®**

Engineered for Customization

For applications with unique flow, compatibility, or regulatory needs, we offer **custom molding** and fully configurable resin/diaphragm combinations. Our engineering team works closely with you to create solutions tailored to your system's exact requirements.

Optimized for High-Demand Applications

With its high-flow design, robust construction, and purity-focused materials, the MPV-5B Series is an excellent choice for medical devices, laboratory equipment, industrial systems, and high-purity fluid handling environments.

[Flow and Crack Pressure Chart - High Flow](#)

Need more information or looking to tailor one of our valves for a specific application?

Complete the form below and our team will promptly connect with you to discuss your requirements and ensure you get the right solution.

[Contact Form](#)

MPV 4BH SERIES



The MPV-4BH Series is engineered for applications requiring enhanced flow capacity without compromising sealing integrity. Featuring a 1/4" barbed connection and a **high-flow internal design**, this valve delivers superior throughput while maintaining reliable flow control. Every unit undergoes 100% leaked-decay testing in our controlled production environment to ensure consistent performance and long-term durability.

Customizable Body Materials: choose from a wide range of engineering-grade resins to meet your system's chemical, mechanical, and environmental requirements:

- **Kynar® (PVDF)**
- **Nylon (glass-filled grade available)**
- **Acetal Celcon® M90**
- **Polycarbonate**
- **Polypropylene**

Diaphragm Options: Select the diaphragm material that best aligns with your application's chemical compatibility and performance needs:

- **EPDM**
- **Viton®**
- **Fluorosilicone**
- **Kalrez®**
- **Silicone USP Class VI**
- **FDA-grade Viton**

Tailored Engineering

For specialized flow, compatibility, or regulatory requirements, we offer custom molding and fully configurable resin/diaphragm combinations. Our engineering team partners with you to develop precision-matched solutions optimized for your unique application.

Built for Demanding, High-Flow Environments

Designed for purity, performance, and elevated flow capacity, the MPV-4BH Series delivers exceptional reliability for medical devices, laboratory systems, industrial equipment, and high-purity fluid handling applications.

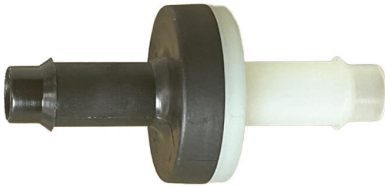
[Flow and Crack Pressure Chart - High Flow](#)

Need more information or looking to tailor one of our valves for a specific application?

Complete the form below and our team will promptly connect with you to discuss your requirements and ensure you get the right solution.

[Contact Form](#)

MPV 4B SERIES



Built for dependable performance, the MPV-4B Series provides reliable flow control in a robust 1/4" barbed configuration. Each valve is precision-engineered and undergoes 100% leak-decay testing in our controlled production environment to ensure consistent sealing, durability, and long-term reliability.

Customizable Body Materials: Select the ideal resin to meet your application's performance, chemical compatibility, and environmental requirements:

- **Kynar® (PVDF)**
- **Nylon (glass-filled grade available)**
- **Acetal Celcon® M90**
- **Polycarbonate**
- **Polypropylene**

Diaphragm Options Optimize flexibility, chemical resistance, and functional performance with a wide range of diaphragm materials:

- **EPDM**
- **Viton®**
- **Fluorosilicone**
- **Kalrez®**
- **Silicone USP Class VI**
- **FDA-grade Viton®**

Tailored Engineering

For specialized or demanding applications, we offer custom molding and fully configurable resin/diaphragm combinations. Our engineering team collaborates with you to develop precision-matched solutions that meet unique performance, regulatory, or environmental requirements.

Built for Critical Environments

Designed for purity, performance, and customization, the **MPV-4B Series** delivers exceptional quality and reliability for medical, laboratory, industrial, and high-purity fluid systems.

[*Flow and Crack Pressure Chart - Standard Flow*](#)

Need more information or looking to tailor one of our valves for a specific application?

Complete the form below and our team will promptly connect with you to discuss your requirements and ensure you get the right solution.

[Contact Form](#)

MPV 3B SERIES



Engineered for dependable performance, the MPV-3B Series provides reliable flow control in a compact **3/16" barbed** configuration. Each valve is precision-manufactured and undergoes **100% leak-decay testing** in our controlled production environment to ensure consistent sealing and long-term durability.

Customizable Body Materials

Select the ideal resin to meet your application's performance and compatibility needs:

- **Kynar® (PVDF)**
- **Nylon** (*glass-filled grade available*)
- **Acetal Celcon® M90**
- **Polycarbonate**
- **Polypropylene**

Diaphragm Options

Optimize chemical resistance, flexibility, and functional performance with a wide range of diaphragm materials:

- **EPDM**
- **Viton®**
- **Fluorosilicone**
- **Kalrez®**
- **Silicone USP Class VI**
- **FDA-grade Viton®**

Tailored Engineering

For unique or demanding applications, we offer **custom molding** and fully configurable resin/diaphragm combinations. Our engineering team collaborates with you to develop precision-matched solutions that meet specific performance, regulatory, or environmental requirements.

Built for Critical Environments

Designed for purity, performance, and customization, the MPV-3B Series delivers exceptional quality and reliability for medical, laboratory,

industrial, and high-purity systems.

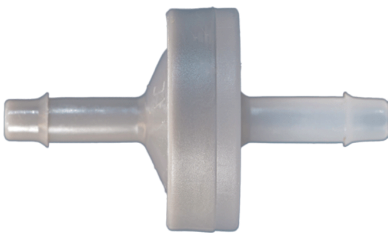
[Flow and Crack Pressure Chart - Standard Flow](#)

Need more information or looking to tailor one of our valves for a specific application?

Complete the form below and our team will promptly connect with you to discuss your requirements and ensure you get the right solution.

[Contact Form](#)

MPV 2B SERIES



Engineered for reliability and performance, the MPV-2B Series delivers consistent flow control in a compact 1/8" barbed design. Each valve is precision-built and undergoes **100% leak-decay testing** in our controlled production environment to ensure dependable sealing and long-term durability.

Customizable Body Materials: Choose the ideal resin for your application requirements:

- **Kynar® (PVDF)**
- **Nylon** (*glass-filled grade available*)
- **Acetal Celcon® M90**
- **Polycarbonate**
- **Polypropylene**

Diaphragm Options Optimize chemical compatibility, flexibility, and performance with a wide range of diaphragm materials:

- **EPDM**
- **Viton®**
- **Fluorosilicone**
- **Kalrez®**
- **Silicone USP Class VI**
- **FDA-grade Viton®**

Tailored Engineering

For specialized applications, we offer **custom molding** and fully customizable resin/diaphragm combinations. Our engineering team partners with you to develop precision-matched solutions that meet unique performance, regulatory, or environmental requirements.

Built for Critical Environments

Designed for purity, performance, and configurability, the MPV-2B Series provides exceptional quality and reliability for demanding

applications across medical, laboratory, industrial, and high-purity systems.

[Flow and Crack Pressure Chart- Standard Flow](#)

Need more information or looking to tailor one of our valves for a specific application? Complete the form below and our team will promptly connect with you to discuss your requirements and ensure you get the right solution.

[Contact Form](#)



MPV-L SERIES | MEDICAL GRADE LUER CHECK VALVES

Engineered for **critical medical and laboratory applications**, our **MPV Luer Series Medical Grade Plastic Check Valves** are **manufactured, assembled, and rigorously tested at 15 PSI in a certified Class 7 Cleanroom environment**, ensuring unmatched contamination control and reliability.

Ultra-Pure, High-Performance Materials Crafted from premium **Polypropylene, Polycarbonate, Radiation-Stable Polycarbonate, and Kynar® 720**, our check valves deliver **exceptional chemical resistance and durability** for demanding medical, pharmaceutical, and laboratory environments.

Precision-Designed for Sterile Applications Pre-packaged and produced under strict cleanroom conditions, these valves provide **consistent performance where purity matters most.**

4 Main Connector Options:

- Male Inlet Luer with Rotating Collar to Female Luer
- Male Inlet Rotating Collar to Male Rotating Collar
- Female Inlet Luer Lock to Female Luer Lock
- Female Inlet Luer Lock to Male Slip

Barb to ***

Diaphragm Options: Silicone

Flow Direction: Inlet to Outlet

****Custom Options: These Luers can be manufactured to fit with any of our Barb Connectors on the opposing end.*

Barb Size options: 1/8 inch, 3/16 inch, 1/4 inch, 5/16 inch, 3/8 inch

SKU	Luers	Body Material	Diaphragm
MPV-FLL-BODY-DIAPHRAGM	IN: Female Luer OUT: Female Luer	Polycarbonate Polypropylene Kynar®	Silicone USP Class VI
MPV-MLLR-BODY-DIAPHRAGM	IN: Male Luer OUT: Male Luer w/Rotating Collar	Polycarbonate Polypropylene Kynar®	Silicone USP Class VI
MPV-FLL-MLLR-BODY-DIAPHRAGM	IN: Female Luer OUT: Male Luer w/ Rotating Collar	Polycarbonate Polypropylene Kynar®	Silicone USP Class VI
MPV-MLLR-FLL-BODY-DIAPHRAGM	IN: Male Luer Out: Female Luer	Polycarbonate Polypropylene Kynar®	Silicone USP Class VI

Cleanroom Class 8 Production & Manufacturing Available

CIS SERIES



This is a non-barbed Check Valve with a white tubing port inlet and clear tubing port outlet. The body is made of Acrylic with a blue Silicone diaphragm. This check valve is pressure-rated at 45 psi. The port sizes are both .130" and will accommodate 1/16" ID soft Silicone tubing as well as other tubing of 1/8" and 3/32" ID. It is manufactured in an ISO Class 8 Cleanroom and is Gamma, E-beam, and EtO sterilizable. This valve is made of Class VI approved materials, it is ultrasonically welded and is 100% inline tested for backflow and weld leaks.

SKU	Description
CIS-6383	Check Valve .130 port Acrylic/Silicone .29CP

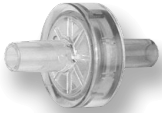
CSP SERIES - POLYETHYLENE CHECK VALVES



The CSP Series Check Valves have a Polyethylene housing with a Neoprene disc for the 1/4-inch size and a Polyethylene disc for the 3/8-inch size. The maximum pressure for these check valves is 20 psi.

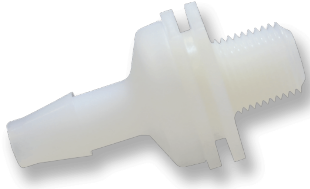
SKU	Description
CSP-38	3/8 inch to 9/16 inch ID Polypropylene Check Valve

BBCV SERIES



The BBCV Series Check Valve has a Male Slip Luer with 30 psi back pressure and 1/4 psi inlet cracking pressure. This series comes in ABS or Polycarbonate housing, both with Silicone Discs.

SKU	Description
BBCV-MLFL-ABS	Male Luer by Female Luer ABS Check Valve .25 psi Crack
BBCV-MLFL-01-ABS	Male Luer by Female Luer ABS Check Valve .01 psi Crack
BBCV-MLML-ABS	Male Luer by Male Luer ABS Check Valve .25 psi Crack



CMKV SERIES

The CMKV Series Plastic Check Valves are 1/8 inch Male NPT by Barb sizes of 1/8 inch, 3/16 inch, 1/4 inch, and 3/8 inch. The flow is from thread to barb. Material / Disc combinations are available in PVDF with FKM, Polypropylene with FKM, Polycarbonate with Neoprene, Polycarbonate with Silicone, Nylon with Silicone, and Nylon with Neoprene.

SKU	Description
CMKV-18B	1/8 MNPT by 1/8 Barb PVDF/FKM Check Valve
CMKV-14B-NS	1/8 MNPT by 1/4 Barb Nylon/Silicone Check Valve
CMKV-316B	1/8 MNPT by 3/16 Barb PVDF/FKM Check Valve



VC-IG SERIES

The VC-IG Series Plastic Check Valves have housing molded of Polysulfone or Polypropylene with either a POM or Silicone disc. The cracking pressure for these units is .8 H₂O or .028 psi. The 10-32 inch units have a cracking pressure of 10 H₂O or .36 psi. These check valves were made to be used in low-pressure applications. Reverse flow at 1 psi is available as follows: Polypropylene with Silicone: .20 SCIM, Polysulfone with POM 2.98 SCIM, Polysulfone with POM 1.00 SCIM R2, Polysulfone with Silicone .20 SCIM, and Polysulfone with Silicone .06 SCIM 10-32 inch Female ports only. Maximum pressure is 10 psi excluding the 10-32 inch port which is rated for 75 psi.

SKU	Description
VC-IG-1032F-PSS	1032 Female PS Silicon Check Valve
VC-IG-1B-PPS	1/16 Barb PP Silicone Check Valve
VC-IG-1B-PSC R2	1/16 Barb PS Celcon® Check Valve
VC-IG-1B-PSS	1/16 Barb PS Silicone Check Valve
VC-IG-1S-PPS	1/16 Shaft PP Silicone Check Valve
VC-IG-1S-PSC	1/16 Shaft PS Celcon® Check Valve
VC-IG-1S-PSC R2	1/16 Shaft PS Celcon® Check Valve
VC-IG-1S-PSS	1/16 Shaft PS Silicone Check Valve
VC-IG-2B-PPS	1/8 Barb PP Silicone Check Valve
VC-IG-2B-PSC R2	1/8 Barb PS Celcon® Check Valve



SKU	Description
VC-IG-2B-PSS	1/8 Barb PS Silicone Check Valve



DUCKBILL CHECK VALVES

DUCKBILL CHECK VALVES

Pneuline Supply offers several different duckbill check valve options. Duckbill check valves are usually used in the medical industry, for example in situations where backflow is a main concern.

CNV SERIES



The CNV Series Check Valve is made of Polypropylene and is available in three sizes for 1/16 inch, 5/32 inch, or 1/8 inch ID tubing. The 1/16-inch ID tubing has either a 3-inch water column or an 8-inch water column opening pressure. The 8 inch water column is available with an EPDM or ECH duckbill. The 3-inch water column is offered with only an EPDM duckbill. The 1/8-inch size has a 3-inch water column with an EPDM duckbill. The 5/32-inch size has a 3-inch water column with an EPDM duckbill. A 3-inch water column equals 1/10 psi, and an 8 inch water column equals 1/3 psi. The maximum pressure for this check valve is 30 psi and the temperature range is from 35° F to 150° F.

SKU	Description
CNV-16S-PPEP-3	1/16 inch ID EPDM Duckbill Check Valve 3" water column
CNV-16S-PPEP-8	1/16 inch ID EPDM Duckbill Check Valve 8" water column
CNV-16S-PPEPC-8	1/16 inch ID ECH Duckbill Check Valve 8" water column
CNV-18S-PPEP	1/8 inch ID EPDM Duckbill Check Valve 3" water column
CNV-532S-PPEP-3	5/32 inch ID EPDM Duckbill Check Valve 3" water column

CDV SERIES



This is a non-barbed **Acrylic or Polycarbonate Check Valve** with a Silicone duck bill. This is a normally open, one-way check valve. It prevents backflow leakage with minimal pressure. The ends of the ports measure .134 to accommodate 1/8" ID tubing. These fittings are also available with male and female Luer Locks.

SKU	Description
CDV-125	1/8 inch ID Acrylic Luer Duckbill Check Valve
CDV-125MLL	1/8 inch ID to Male Luer Lock Acrylic Duckbill Check Valve
CDV-125-PC	1/8 inch ID Polycarbonate Duckbill Check Valve
CDV-18	1/8 inch ID Tubing Acrylic Duckbill Check Valve
CDV-FL-125	1/8 inch ID to Female Luer Lock Acrylic Duckbill Check Valve
CDV-FLL125	Female Luer Lock by .125
CDV-FLLML	Female Luer Lock to Male Slip Luer Acrylic Duckbill Check Valve
CDV-FLLMLL	Female Luer Lock to Male Luer Lock Acrylic Duckbill Check Valve

SKU	Description
CDV-ML	1/8 inch ID Male Luer Acrylic Duckbill Check Valve

QCD SERIES - LUER DUCKBILL CHECK VALVES



The QCD Series Luer Check Valves are made of Polycarbonate and have a Silicone duck bill. The low cracking pressure is 0.433 psi, which determines when the component starts to open. The OD sizes are 5/64 inch, 7/64 inch, and 9/64 inch. Also available with female and male Luer Locks.

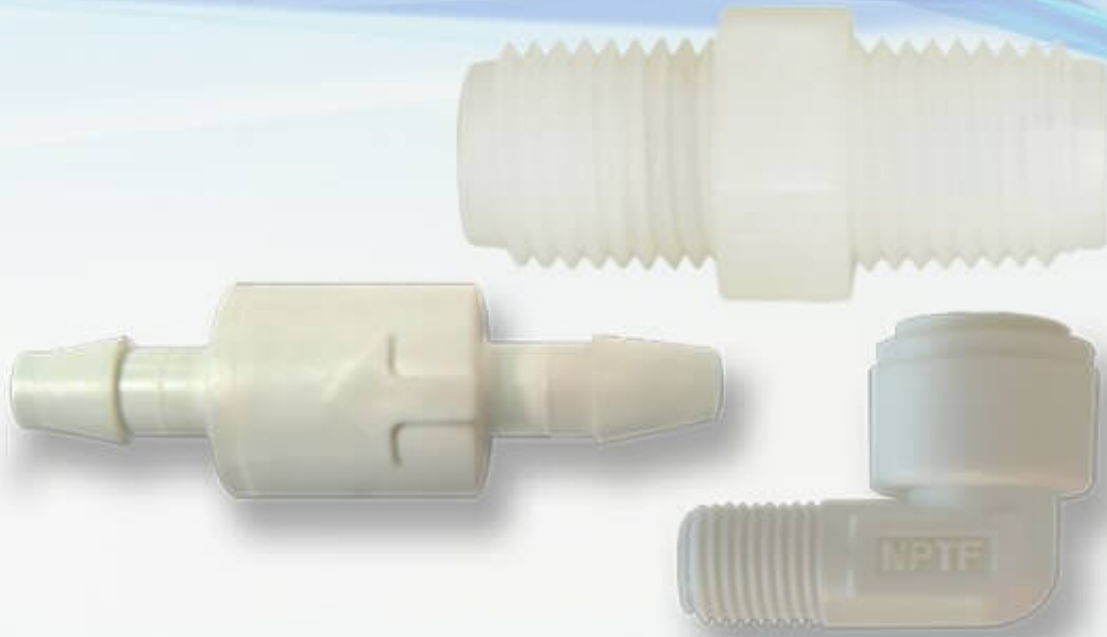
SKU	Description
QCD-564	5/64 inch OD Tubing Polycarbonate Luer Check Valve
QCD-764	7/64 inch OD Tubing Polycarbonate Luer Check Valve
QCD-964	9/64 inch OD Tubing Polycarbonate Luer Check Valve
QCD-FM	Female by Male Luer Lock Polycarbonate Check Valve

ASD SERIES



These ASD Series single barbed enlarging duckbill Check Valves are available in several materials such as Nylon (N), Polypropylene (PP), or Polycarbonate (PC) housing. These Check Valves have a Silicone diaphragm. The available barb sizes are 1/8 inch by 3/16 inch and 3/16 inch by 1/8 inch.

SKU	Description
ASD-2B	1/8 Barb
ASD-2B3B	1/8 Barb by 3/16 Barb
ASD-3B	3/16 Barb
ASD-3B2B	3/16 Barb by 1/8 Barb



PLASTIC BALL CHECK VALVES

PLASTIC BALL CHECK VALVES

Plastic ball valves simple designs reduce the need for maintenance and energy needs.
The ball inside automatically moves from the flow path to block it.

DCE SERIES



The DCE Series is a rigid male Check Valve elbow made of Acetal that is NSF 51® certified and meets NSF 61® requirements. The available male threads are 1/8 inch, 1/4 inch, and 3/8 inch. OD tubing sizes are 5/32 inch, 3/16 inch, 1/4 inch, 5/16 inch, 3/8 inch, and 1/2 inch. The working pressure at 77° F is 232 psi, and at 158° F it is 145 psi. The working temperature range is from 32° F to 158° F. It can be used for compressed air, inert gases, water, and other fluids.

SKU	Description
DCE-2M-14	1/8 MNPT by 1/4 OD Push-in Elbow Spring-loaded Check Valve
DCE-4M-14	1/4 MNPT by 1/4 OD Push-to Connect Elbow Check Valve
DCE-6M-14	3/8 MNPT by 1/4 OD Push-to Connect Elbow Check Valve

CVK SERIES - MALE CHECK VALVES



The CVK Series are male-by-male Check Valves made of natural PVDF. It has a 316 Stainless Steel spring and ball Viton® O-ring. Other O-ring options are EPDM and Fluorosilicone (blue). These check valves have a 1-2.5 psi cracking pressure with a maximum operating pressure of 220 psi and a maximum working temperature of 180°F. Available with a Hastelloy® spring and PTFE ball. Available Male NPT thread sizes are: 1/8 inch, 1/4 inch, 3/8 inch, and 1/2 inch.

SKU	Description
CVK-2M	1/8 inch NPT Check Valve PVDF
CVK-4M	1/4 NPT Check Valve PVDF
CVK-6M	3/8 inch NPT Check Valve PVDF
CVK-6M-HPTFE	3/8 inch M Check Valve PVDF, Hastelloy®/PTFE/FKM
CVK-8M	1/2 inch NPT Check Valve PVDF
CVK-8M-HPTFE	1/2 inch M Check Valve PVDF, Hastelloy®/PTFE/FKM

MCV SERIES - CHECK VALVES



The MCV Series Check Valve housings are available in various materials: White Nylon is standard, with Black Nylon optional; Natural Polypropylene is standard with Black Polypropylene optional. Black PVDF is also available. Different colors can be specially formulated. O-ring Seals are Buna-N, EPDM, Viton®, and Silicone. The standard spring is 302 Stainless Steel with 316 Stainless Steel ball. The Standard barb inlet and outlet sizes are for 1/8 inch, 3/16 inch, and 1/4 inch ID tubing. The outlet side is available with a 1/8 Male NPT or 1/4 Male NPT.

The maximum operating pressure is 125 psi. and the maximum operating temperature is 140° F. PVDF is sold with PTFE seals and a Hastelloy Springs.

Spring Options:

- No Spring
- 1/2 psi - 302 Stainless
- 1 psi - 302 Stainless
- 2 psi - 302 Stainless
- 3 psi - 302 Stainless

MCV SERIES PRODUCT LIST

Pneuline Part Number	Size	Body	Seal	PSI
MCV-4B-PPE-1	1/4 (4B)	Polypropylene	EPDM	1 PSI
MCV-4B-NV-1/2	1/4 (4B)	Nylon	Viton ®	1/2 PSI
MCV-4B-NV-1	1/4 (4B)	Nylon	Viton ®	1 PSI
MCV-4B3B-NB-2	1/4 (4B) by 3/16 (3B)	Nylon	Buna	2 PSI
MCV-3B-PPV-3	3/16 (3B)	Polypropylene	Viton ®	3 PSI
MCV-3B-PPV-1/2	3/16 (3B)	Polypropylene	Viton ®	1/2 PSI
MCV-3B-PPV-1	3/16 (3B)	Polypropylene	Viton ®	1 PSI
MCV-3B-PPE-2	3/16 (3B)	Polypropylene	EPDM	2 PSI
MCV-3B-PPE-1/2	3/16 (3B)	Polypropylene	EPDM	1/2 PSI
MCV-3B-PPE-1	3/16 (3B)	Polypropylene	EPDM	1 PSI
MCV-3B-NV-1	3/16 (3B)	Nylon	Viton ®	1 PSI
MCV-3B-NV-2	3/16 (3B)	Nylon	Viton ®	2 PSI
MCV-3B4B-PPV-3	3/16 (3B) by 1/4 (4B)	Polypropylene	Viton ®	3 PSI
MCV-3B4B-PPE-3	3/16 (3B) by 1/4 (4B)	Polypropylene	EPDM	3 PSI
MCV-2B-PPV-2	1/8 (2B)	Polypropylene	Viton ®	2 PSI
MCV-2B-PPV-1/2	1/8 (2B)	Polypropylene	Viton ®	1/2 PSI
MCV-2B-PPE-3	1/8 (2B)	Polypropylene	EPDM	3 PSI

MCV-2B-PPE-2	1/8 (2B)	Polypropylene EPDM	2 PSI
MCV-2B-PPE-1/2	1/8 (2B)	Polypropylene EPDM	1/2 PSI
MCV-2B-PPE-1	1/8 (2B)	Polypropylene EPDM	1 PSI
MCV-2B-PPB-2	1/8 (2B)	Polypropylene Buna	2 PSI
MCV-2B-NV-1/2	1/8 (2B)	Nylon Viton ®	1/2 PSI
MCV-2B-NV-1	1/8 (2B)	Nylon Viton ®	1 PSI
MCV-2B-NB-1	1/8 (2B)	Nylon Buna	1 PSI
MCV-2B4B-PPV-2	1/8 (2B) by 1/4 (4B)	Polypropylene Viton ®	2 PSI
MCV-2B4B-PPE-1/2	1/8 (2B) by 1/4 (4B)	Polypropylene EPDM	1/2 PSI
MCV-2B2M-PPV-2	1/8 (2B) 1/8 MNPT	Polypropylene Viton ®	2 PSI
MCV-4B4B-PPV-1	1/4 (4B)	Polypropylene Viton ®	1 PSI



POPPET CHECK VALVE

POPPET CHECK VALVES

Poppet check valves offer an easy way to control the timing and quantity of the flow of gas or vapor.



PCVM SERIES

The PCVM series is a push-in acetal poppet check valve, see available sizes and PSI options below.

SKU	DESCRIPTION
PCVM-4	1/4 Push-to-Connect Polypropylene Check Valve 2.75 psi
PCVM-4-2M	1/4 Push-to-Connect by 1/8 MNPT Check Valve .75 psi
PCVM-4-3	1/4 Push-to-Connect Polypropylene 2.75 psi
PCVM-4-5	1/4 Push-to-Connect Polypropylene Check Valve 5 psi
PCVM-4PP	1/4 Push-to-Connect Polypropylene Check Valve .3 psi
PCVM-6	3/8 Push-to-Connect Polypropylene Check Valve .3 psi



FSPV SERIES - POPPET CHECK VALVES

The FSPV Series Poppet Check Valves come in Black PVDF, Black Polypropylene, and White Polypropylene with a choice of Buna-N, EPDM, Viton®, or Kalrez® seal. The standard spring is 302 Stainless Steel with a cracking pressure of 1/3 psi. Optional springs of 1 or 7 psi are available. These high-flow valves can be used in pressures up to 125 psi. Hastelloy spring is optional. The inlet and outlet sizes are Female NPT 1/4 inch, 3/8 inch, 1/2 inch, and 3/4 inch, and Male NPT size of 1/2 inch.

SKU	Description
FSPV-12F	1/2 FNPT Poly Poppet Check Valve
FSPV-12F12M	1/2 FNPT by 1/2 MNPT Poly Poppet Check Valve
FSPV-12M12M	1/2 MNPT by 1/2 MNPT Poly Poppet Check Valve
FSPV-12M-HV	1/2 MNPT Valve Hastelloy® FKM Poppet Check Valve
FSPV-14F	1/4 FNPT Poly FKM 302 1 psi Poppet Check Valve
FSPV-14F-.3E-WP	1/4 FNPT White Poly EPDM Seals 1/3 psi Poppet Check Valve
FSPV-14F-HV-1	1/4 FNPT Poly FKM Hastelloy® 1 psi Poppet Check Valve
FSPV-34F	3/4 FNPT Poly FKM Disk 1/3 psi Poppet Check Valve
FSPV-34F-11WC	3/4 FNPT Poly FKM 11" C 1/3 psi Poppet Check Valve
FSPV-34F-5WC	3/4 FNPT Poly FKM 5" WC Poppet Check Valve
FSPV-34F-HV	3/4 FNPT Poly FKM Disk Hastelloy® 1/3 psi Poppet Check Valve

SKU	Description
FSPV-34F-HV-.7	3/4 FNPT Poly FKM O-Ring Hastelloy® .7 psi Poppet Check Valve
FSPV-34F-HV-1.5	3/4 FNPT Poly FKM O-Ring Hastelloy® 1.5 psi Poppet Check Valve
FSPV-34F-HV-11WC	3/4 FNPT Poly FKM O-Ring Hastelloy® 11 WC Poppet Check Valve
FSPV-38F	3/8 FNPT Poly FKM 302 1/3 psi Poppet Check Valve
FSPV-38F-E-9	3/8 FNPT Poly FKM 302 1 psi Poppet Check Valve
FSPV-38F-HV-2	3/8 FNPT Poly Hastelloy® FKM #2 O-Ring Poppet Check Valve

SPC SERIES



The SPC Series Plastic are PVC, Polypropylene, Nylon Plastic Check Valves and have 302 Stainless Steel springs, 316 Stainless Steel balls, and EPDM seals. 1 psi spring is standard with optional 1/3, 3, 5, 7, 10, or 12-pound springs. Available in barbs, MNPT, FNPT, Push-in connections with multiple combinations. Hastelloy spring, PTFE ball, and FKM O-rings for aggressive environments are available.

SKU	Description
SPC-2B2B-PB-12	1/8 inch Barb Valve Polypropylene Buna 12 psi
SPC-2B-PP-E-10	1/8 inch Barb Polypropylene EPDM 10 psi
SPC-2B-V-12	1/8 inch Barb Viton® with 12 Spring
SPC-2C2C	1/8 inch Compression by 1/8 inch Compression
SPC-2C2M-H-V	1/8 inch Compression by 1/8 inch MNPT Hastelloy® FKM
SPC-2F2F	1/8 inch Female by 1/8 inch Female
SPC-2F2F-HV	1/8 inch Female NPT with Hastelloy® FKM Seals
SPC-2M2M	1/8 inch Male by 1/8 inch Male
SPC-2M4F-E	1/8 inch NPT to 1/4 inch Female EPDM Seals
SPC-4B2M-HV-12	1/4 inch Barb to 1/8 inch MNPT Hastelloy® FKM 12 psi
SPC-4B2M-HV-3	1/4 inch Barb to 1/8 inch MNPT Hastelloy® FKM 3psi
SPC-4B4B	1/4 inch Barb by 1/4 inch Barb
SPC-4B4B-HV	1/4 inch Barb Hastelloy® FKM .5 psi
SPC-4B4B-V-12	1/4 inch Barb FKM with 12 spring
SPC-4B4M-BKPP-HV-1/3	1/4 inch Barb 1/4 inch Male Black Polypropylene FKM Hastelloy® 1/3 psi
SPC-4B4M-VH	1/4 inch Barb by 1/4 inch MNPT FKM/Hastelloy®
SPC-4B-V-12	1/4 inch Barb Viton® with 12 psi Spring
SPC-4B-V-H-1	1/4 inch Barb PVC FKM PTFE/Hastelloy® 1 psi
SPC-4C2M-H-V	1/4 inch Compression by 1/8 inch MNPT Hastelloy® FKM

SKU	Description
SPC-4C4C	1/4 inch Compression by 1/4 inch Compression
SPC-4C4M-K-H-V	1/4 inch Compression 1/4 inch Male PVDF Hastelloy® FKM
SPC-4F4F	1/4 inch Female by 1/4 inch Female
SPC-4F4F-H-V	1/4 inch F by 1/4 inch Female Hastelloy® FKM
SPC-4F4F-K-H-V	1/4 inch Female PVDF Hastelloy® FKM
SPC-4F4FPP-H-V-3	1/4 inch Female Polypropylene Hastelloy® FKM 3 psi
SPC-4F4M-H-V-90PP	1/4 inch Female by 1/4 inch NPT Polypropylene Hastelloy®/ FKM 90 Micron
SPC-4F4M-K-H-V	1/4 inch Female by 1/4 inch M PVDF Hastelloy® FKM
SPC-4M4B-HV	1/4 inch Male 1/4 inch Barb FKM Hastelloy®
SPC-4M4F-H-V	1/4 inch Male by 1/4 inch Female Hastelloy® FKM 1 psi
SPC-4M4F-K-H-V	1/4 inch Male by 1/4 inch Female PVDF Hastelloy® FKM
SPC-4M4M	1/4 inch Male by 1/4 inch Male
SPC-4M4M-H-V	1/4 inch Male by 1/4 inch Male Hastelloy® FKM 1 psi
SPC-4M4P	1/4 inch Male 1/4 inch Push-in
SPC-4M6B	1/4 inch Male 3/8 inch Barb
SPC-4P2M-H-V	1/4 inch Push-in by 1/8 inch Male Hastelloy®
SPC-4P4P	1/4 inch Push-in by 1/4 inch Push-in
SPC-4P4P-HV	1/4 inch Push-in Hastelloy® FKM
SPC-4P4P-SS-HV	1/4 inch Push-in Stainless Steel Ball Hastelloy® FKM
SPC-4P6B-H-V-7	1/4 inch Push-in 3/8 inch Barb Hastelloy® FKM 7
SPC-4PI2M-H-V	1/4 inch Push-in by 1/8 inch Male Hastelloy®/ FKM
SPC-4S4P	1/4 inch Stem by 1/4 inch Push-in
SPC-6B6B	3/8 inch Barb by 3/8 inch Barb
SPC-6B-F-1/3	3/8 inch Barb Fluoroelastomer 1/3 psi
SPC-6P4F-H-V	3/8 inch Push-in by 1/4 inch Female Hastelloy®/ Viton®
SPC-6P4M-H-V	3/8 inch Push-in by 1/4 inch Male Hastelloy®/ Viton®
SPC-6P-6B-H-V	3/8 inch Push-in 3/8 inch Barb Hastelloy® FKM 7 psi
SPC-6P-6B-H-V-R	3/8 inch Push-in 3/8 inch Barb Hastelloy® FKM 7 psi
SPC-6P6M-H-V RV1	3/8 inch Push-in by 3/8 inch Male Hastelloy®/ Viton®
SPC-6S6P	3/8 inch Stem by 3/8 inch Push-in
SPC-8B8B	1/8 inch Male by 1/8 inch Male



CCV SERIES - POPPET CHECK VALVES

The CCV Series are miniature Poppet Check Valves and Pressure Release Valves available with 1/8 inch Male NPT threads and 1/4 inch compression fittings. The NPT fittings are made of Polypropylene, Nylon, and ABS with O-rings made of Buna-N, EPDM, Viton®, Silicone, or fluorosilicone. The spring pressure is 20 psi. The compression fittings are made of Polypropylene with a .713 OD size.

SKU	Description
CCV-2M14C-1	1/8 MNPT by 1/4 Comp Polypropylene / EPDM 1 psi
CCV-2M14C-1.5	1/8 MNPT by 1/4 Comp Polypropylene / EPDM 1.5 psi
CCV-2M14C-3	1/8 MNPT by 1/4 Comp Polypropylene / EPDM 3 psi
CCV-2M14C-3-PPS	1/8 MNPT by 1/4 Comp Polypropylene / Silicone 3 psi
CCV-2M-3	1/8 MNPT by 1/8 MNPT Polypropylene / EPDM 3 psi
CCV-4C6M-3	1/4 Comp by 3/8 MNPT Polypropylene / EPDM 3 psi
CCV-4M14C-1	1/4 MNPT by 1/4 Comp Polypropylene / EPDM 1 psi
CCV-4M-4	1/4 MNPT by 1/4 MNPT Polypropylene / EPDM 4 psi

MSV SERIES | SPRING-LOADED CHECK VALVES



Pneuline Supply, Inc. manufactures the MSV Series inline spring-loaded check valves in a class 8 clean room environment specifically for use in medical applications. Custom molding allows for customer-specific requirements which include resin options, connector variations, and O-ring selections. Available resin options include Polycarbonate, Radiation-stable Polycarbonate, and Kynar® 720 (PVDF). Other custom resins are available upon request. Barbed connectors are available in 1/8-inch, 3/16-inch, and 1/4-inch standard flow or 1/4-inch-high flow, 5/16-inch, and 3/8-inch. Springs are made of 316 Stainless Steel or Hastelloy® in .022 psi, .25 psi, .50 psi, 1 psi, 5 psi, or 10 psi. Passivated springs are available. O-ring options are Silicone USP class VI, Fluorosilicone, EPDM, Viton®, or Kalrez®. To make this product truly unique, we offer custom laser marking for identification purposes such as part number sequencing, lot numbers, or company name.

**Poppet and Piston are optional.*

[Download the MSV Series Flyer](#)

SKU	Description
MSV-2B-AC-6	1/8 Valve Acetal EPDM 6 PSI
MSV-2B-AC-E-.25	1/8 Valve Acetal EPDM .22
MSV-2B-AC-E-1	1/8 Valve Acetal EPDM 1 PSI
MSV-2B-AC-E-5	1/8 Valve Acetal EPDM 5 PSI
MSV-3BAC-.75V-41	3/16 Acetal .75 Viton with 41 micron
MSV-3B-AC-B-1	3/16 Valve Acetal Buna 1
MSV-3B-AC-E-1	3/16 Valve Acetal EPDM 1
MSV-3B-K720-1SS-V	3/16 Kynar 720 Valve Viton 1 PSI 316 SS
MSV-3B-K720-E-.5H	3/16 Kynar 720 Valve EPDM .5 Hastelloy®
MSV-3B-PC-E-.5	3/16 Barb PC EPDM 1/2 PSI
MSV-3B-PC-E-.75	3/16 Barb PC Valve EPDM .75
MSV-3B-PC-E-1	3/16 Barb PC EPDM 1PSI
MSV-3B-Rx2530-6WC-S	3/16 Barb RSPC Valve 6WC Silicone
MSV-4B-PC-S-.22PI	1/4 Valve Polycarb Silicone .22
MSV-4B-PC-S-.5	1/4 Valve Polycarb Silicone .5
MSV-5B-Rx2530-6WC-S	5/16 Barb RSPC Spring Valve 6WC Silicone
MSV-6B-AC-.22 E	3/8 Valve Acetal .22 EPDM
MSV-6B-AC-E-1	3/8 Valve Acetal EPDM 1 PSI
MSV-6B-K720-E-1	3/8 Valve Kynar EPDM 1 PSI
MSV-6B-Rx2530-6WC-S	5/16 Barb RSPC Spring Valve 6WC Silicone



SELF-SEALING CHECK VALVES

SELF-SEALING CHECK VALVES

Our PSSV Series is a new addition to our check valve collection, these valves are used to shut out backflow in liquid and air applications.



PSSV SERIES

Precision-crafted in a **Class 7 Cleanroom**, our **PSSV Series Self-Sealing Check Valves** provide superior **back-flow prevention** for **critical air and fluid applications**. Designed for **medical, respiratory, ventilator, and bio-pharmaceutical** environments, these valves ensure **high-purity performance and contamination control**.

✓ Reliable Back-Flow Prevention

- Innovative **retractable silicone disk** for secure sealing
- Designed for pressures **under 50 PSI**, ensuring dependable flow control

✓ High-Quality Materials for Medical-Grade Durability: Polycarbonate & Polypropylene housings

Additional material options: **Radiation-Stable Polycarbonate & PVDF**

✓ Versatile Sterilization Compatibility:

- **Gamma Sterilization (6 Mrads)**
- **ETO Sterilization** for medical-grade cleanliness

✓ Customizable Designs for Your Unique Needs:

- **Barbed connectors:** Available for **3/16" ID tubing and 5/16" ID tubing**
- Optional **EPDM sealing material** with qualifying volumes
- **Expanded connection options:** Male & Female **Luer** fittings and **Bond-in connections** tailored to volume requirements

Engineered for **precision, purity, and flexibility**, the **PSSV Series** is the trusted solution for demanding medical and fluid-handling applications.

- *Open pressure is approximately .20 PSI*
- *Flow is 56.29 l/h*
- *Crack Pressure is .001 PSI*

[View our Flyer Here](#)

SKU	Description	Diaphragm
PSSV-3B-PP	3/16 inch by 3/16 inch Polypropylene Barbed Self-Sealing Check Valve	Silicone EPDM
PSSV-3B-PC	3/16 inch by 3/16 inch Polycarbonate Barbed Self-Sealing Check Valve	Silicone EPDM
PSSV-5B-PP	5/16 inch by 5/16 inch Polypropylene Barbed Self-Sealing Check Valve	Silicone EPDM
PSSV-5B-PC	5/16 inch by 5/16 inch Polycarbonate Barbed Self-Sealing Check Valve	Silicone EPDM



SKU	Description	Diaphragm
PSSV-5B3B-PP	5/16 inch by 3/16 inch Polypropylene Barbed Self-Sealing Check Valve	Silicone EPDM
PSSV-5B3B-PC	5/16 inch by 3/16 inch Polycarbonate Barbed Self-Sealing Check Valve	Silicone EPDM