



DIAPHRAGM CHECK VALVES

DIAPHRAGM CHECK VALVES

Check Valves: Diaphragm Check Valves
Pneuline 100% Leak Tests all MPV Series Check Valves in-house.



MPV-L SERIES | MEDICAL GRADE LUER CHECK VALVES

Our MPV Luer Series Medical Grade Plastic Check Valves are manufactured, assembled, produced, 15 psi tested, and pre-packaged in a Class 7 Cleanroom environment

Check valves Made of Polypropylene, Polycarbonate, Radiation-Stable Polycarbonate, and Kynar 720®.

4 Main Connector Options: Male Inlet Luer with Rotating Collar to Female Luer, Male Inlet Rotating Collar to Male Rotating Collar, Female Inlet Luer Lock to Female Luer Lock, Female Inlet Luer Lock to Male Slip, Barb to ***

Diaphragm Options: Silicone
Flow Direction: Inlet to Outlet

***Custom Options: These Luers can be manufactured to fit with any of our Barb Connectors on the opposing end.
Barb Size options: 1/8 inch, 3/16 inch, 1/4 inch, 5/16 inch, 3/8 inch

| SKU | Description |
|---------------|---|
| MPV-FLL-PC-S | IN: Female Luer OUT: Female Luer |
| MLLR-PC-S | IN: Male Luer OUT: Male Luer w/Rotating Collar |
| FLL-MLLR-PC-S | IN: Female Luer OUT: Male Luer w/ Rotating Collar |
| MLLR-FLL-PC-S | IN: Male Luer Out: Female Luer |



MPV SERIES | FOOD & BEVERAGE GRADE CHECK VALVES

Plastic check valves molded at our facility are made from NSF 51/62 Approved materials, used for food and beverage applications. Our valves do not have grease or oil, like other diaphragm valves on the market. Ideal for contact with Food, Beverage, Water and Laboratory applications. Housings are molded from materials include POM -Celcon, M90® and PVDF, Arkema-Kynar 720®. The diaphragm options are EPDM, Santoprene™, or FDA Viton® disks. Sizes we offer include 1/8, 3/16, 1/4, 5/16, and 3/8 barbed valves.

[Download The Flyer](#)

| | |
|--------------------|---------------------------------------|
| MPV-2B-AC-FDAViton | 1/8 Barbed Acetal with FDA Viton .020 |
| MPV-2B-AC-S | 1/8 Barbed Acetal with Santoprene |
| MPV-2B-AC-E | 1/8 Barbed Acetal with EPDM |

| | |
|----------------------|---|
| MPV-3B-AC-FDA Viton | 3/16 Barbed Acetal with FDA Viton .020 |
| MPV-3B-AC-S | 3/16 Barbed Acetal with Santoprene |
| MPV-3B-AC-E | 3/16 Barbed Acetal with EPDM |
| MPV-4BH-AC-FDA Viton | 1/4 Barbed, Acetal, High Flow with FDA Viton .030 |
| MPV-4BH-AC-S | 1/4 Barbed Acetal,High Flow with Santoprene |
| MPV-4BH-AC-E | 1/4 Barbed Acetal,High Flow with EPDM |
| MPV-5B-AC-FDA Viton | 5/16 Barbed, Acetal, High Flow with FDA Viton .030 |
| MPV-5B-AC-S | 5/16 Barbed, Acetal, High Flow with Santoprene .030 |
| MPV-5B-AC-E | 5/16 Barbed, Acetal, High Flow with EPDM .030 |
| MBV-6B-AC-FDA Viton | 3/8 Barbed, Acetal, High Flow with FDA Viton .030 |
| MBV-6B-AC-S | 3/8 Barbed, Acetal, High Flow with Santoprene .030 |
| MBV-6B-AC-E | 3/8 Barbed, Acetal, High Flow with EPDM .030 |



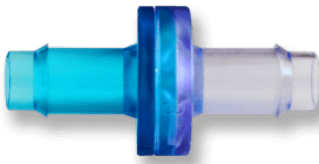
MPV SERIES | AUTOMOTIVE GRADE CHECK VALVES

Pneuline Supply manufactures Plastic Check Valves that are ideal for Automotive applications. Inlets are made of either Natural Nylon or Glass-Filled Natural Nylon. Outlets are made of either Black Nylon or Glass-Filled Black Nylon. The Barbed connectors are available in 1/8-inch, 3/16 inch, and 1/4-inch Standard Flow or 1/4-inch, 5/16 inch, and 3/8 inch High Flow. Diaphragms are made of either Fluorosilicone or EPDM. Customer-specific unique laser part marking is available for identifiers such as Part number sequencing, Lot number, or Company name.

[Download Our Flyer](#)

| SKU | Description |
|---------------|---|
| MPV-2B-NE | 1/8 Barb Nylon / EPDM Check Valve |
| MPV-2B-NF | 1/8 Barb Nylon / Fluorosilicone Check Valve |
| MPV-3B-NE | 3/16 Barb Nylon / EPDM Check Valve |
| MPV-3B-NF | 3/16 Barb Nylon / Fluorosilicone Check Valve |
| MPV-3B-PE | 3/16 Barb Polypropylene / EPDM Check Valve |
| MPV-4B-HKE | 1/4 Barb Hi-Flow PVDF / EPDM Check Valve |
| MPV-4B-NE | 1/4 Barb Hi-Flow Nylon / EPDM Check Valve |
| MPV-4B-NF | 1/4 Barb Nylon / Fluorosilicone Check Valve |
| MPV-5B-NE | 5/16 Barb Hi-Flow Nylon / EPDM Check Valve |
| MPV-5B-NF | 5/16 Barb H-Flow Nylon / Fluorosilicone Check Valve |
| MPV-5B-R530-E | 5/16 Barb High-Flow Glass-Filled Nylon / EPDM Check Valve |

| SKU | Description |
|----------------------|---|
| MPV-6B-NE | 3/8 Barb High-Flow Nylon / EPDM Check Valve |
| MPV-6B-NF | 3/8 Barb Hi-Flow Nylon / Fluorosilicone Check Valve |
| MPV-6B-R530-E | 3/8 Barb High-Flow Glass-Filled Nylon / EPDM Check Valve |



MPV SERIES | MEDICAL GRADE CHECK VALVES

MPV Series Medical Grade Check Valves are manufactured and tested in a Class 7 Cleanroom environment making them ideal for medical applications. All cleanroom check valves are tested in our cleanroom environments at 15 PSI. Resin options include Nylon, Polypropylene, Polycarbonate, Radiation-stable Polycarbonate, and Kynar® 720. Other custom resins are available at the customer’s request. Sizes Available: 3/16 inch, 5/16 inch, and 3/8 inch high flow. Diaphragms are made of Silicone USP Class VI or FDA Viton®. Our custom molding options allow for customer specific needs or requirements which include resin options as well as diaphragm options.

[Download the MPV Series Flyer](#)

| SKU | Description |
|-------------|--|
| MPV-2B-NS | 1/8 Barb Nylon / FDA Silicone Check Valve |
| MPV-2B-PCS | 1/8 Barb Polycarbonate / Natural FDA Silicone Check Valve |
| MPV-3B-PCS | 3/16 Barb Polycarbonate / Silicone .020 VI Check Valve |
| MPV-4B-KS | 1/4 Barb Standard PVDF/ Silicone Check Valve |
| MPV-6B-KS | 3/8 Barb PVDF / USP Class VI Silicone Check Valve |
| MPV-6B-PCRS | 3/8 Barb Polycarbonate / Silicone USP class VI Check Valve |

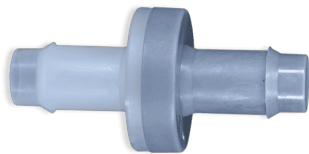
CIS SERIES



This is a non-barbed Check Valve with a white tubing port inlet and clear tubing port outlet. The body is made of Acrylic with a blue Silicone diaphragm. This check valve is pressure-rated at 45 psi. The port sizes are both .130" and will accommodate 1/16" ID soft Silicone tubing as well as other tubing of 1/8" and 3/32" ID. It is manufactured in an ISO Class 8 Cleanroom and is Gamma, E-beam, and EtO sterilizable. This valve is made of Class VI approved materials, it is ultrasonically welded and is 100% inline tested for backflow and weld leaks.

| SKU | Description |
|----------|--|
| CIS-6383 | Check Valve .130 port Acrylic/Silicone .29CP |

MPV SERIES | INDUSTRIAL GRADE CHECK VALVES



MPV Series Plastic Diaphragm Check Valves are Manufactured by Pneuline Supply. One-way valves are used for Ozone, pools, spas, printing, ink jet applications. Wound therapy, air mattresses, printing, ink jet applications, Vacuum applications, corrosive liquids. We are the exclusive producers of PVDF: Kynar 720 (R) Valves with FFKM, Kalrez 4079 Diaphragms.

Download Our Flyer for information on our body & diaphragm options.

| SKU | Description |
|-----------|---|
| MPV-2B-KK | 1/8 Barb PVDF / Kalrez® Check Valve |
| MPV-2B-KV | 1/8 Barb PVDF / FKM Check Valve |
| MPV-2B-NF | 1/8 Barb Nylon / Fluorosilicone Check Valve |
| MPV-2B-NV | 1/8 Barb Nylon / FKM Check Valve |
| MPV-3B-AF | 3/16 Barb Acetal / Fluorosilicone Check Valve |
| MPV-3B-KV | 3/16 Barb PVDF / FKM Check Valve |
| MPV-3B-NF | 3/16 Barb Nylon / Fluorosilicone Check Valve |
| MPV-3B-NV | 3/16 Barb Nylon / FKM Check Valve |

| SKU | Description |
|------------------|--|
| MPV-3B-PF | 3/16 Barb Polypropylene / Fluorosilicone Check Valve |
| MPV-3B-PV | 3/16 Barb Polypropylene / FKM Check Valve |
| MPV-4B-HKK | 1/4 Barb Hi-Flow PVDF / Kalrez Check Valve |
| MPV-4B-HKV | 1/4 Barb Hi-Flow PVDF / FKM Check Valve |
| MPV-4B-HNF | 1/4 Barb Hi-Flow Nylon / Fluorosilicone Check Valve |
| MPV-4B-HNV | 1/4 Barb Hi-Flow PVDF / FKM Check Valve |
| MPV-4B-KV | 1/4 Barb Standard Flow PVDF / FKM Check Valve |
| MPV-4B-NF | 1/4 Barb Nylon / Fluorosilicone |
| MPV-4B-NV | 1/4 Barb Nylon / FKM Check Valve |
| MPV-4B-PF | 1/4 Barb Polypropylene / Fluorosilicone Check Valve |
| MPV-4B-PV | 1/4 Barb Polypropylene / FKM Check Valve |
| MPV-5B-AF | 5/16 Barb Acetal / Fluorosilicone Check Valve |
| MPV-5B-KK | 5/16 Barb PVDF / Kalrez® Check Valve |
| MPV-5B-KV | 5/16 Barb PVDF / FKM Check Valve |
| MPV-5B-NF | 5/16 Barb Nylon / Fluorosilicone Check Valve |
| MPV-5B-NV | 5/16 Barb Nylon / FKM Check Valve |
| MPV-6B-KV | 3/8 Barb PVDF /FKM Check Valve |
| MPV-6B-NF | 3/8 Barb Nylon / Fluorosilicone Check Valve |
| MPV-6B-NV | 3/8 Barb Nylon / FKM Check Valve |

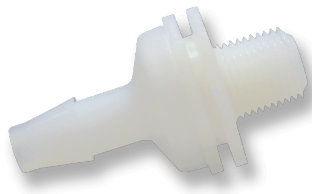
CSP SERIES - POLYETHYLENE CHECK VALVES



The CSP Series Check Valves have a Polyethylene housing with a Neoprene disc for the 1/4-inch size and a Polyethylene disc for the 3/8-inch size. The maximum pressure for these check valves is 20 psi.

| SKU | Description |
|--------|--|
| CSP-38 | 3/8 inch to 9/16 inch ID Polypropylene Check Valve |

CMKV SERIES



The CMKV Series Plastic Check Valves are 1/8 inch Male NPT by Barb sizes of 1/8 inch, 3/16 inch, 1/4 inch, and 3/8 inch. The flow is from thread to barb. Material / Disc combinations are available in PVDF with FKM, Polypropylene with FKM, Polycarbonate with Neoprene, Polycarbonate with Silicone, Nylon with Silicone, and Nylon with Neoprene.

| SKU | Description |
|-------------|---|
| CMKV-18B | 1/8 MNPT by 1/8 Barb PVDF/FKM Check Valve |
| CMKV-14B-NS | 1/8 MNPT by 1/4 Barb Nylon/Silicone Check Valve |
| CMKV-316B | 1/8 MNPT by 3/16 Barb PVDF/FKM Check Valve |

VC-IG SERIES



The VC-IG Series Plastic Check Valves have housing molded of Polysulfone or Polypropylene with either a POM or Silicone disc. The cracking pressure for these units is .8 H₂O or .028 psi. The 10-32 inch units have a cracking pressure of 10 H₂O or .36 psi. These check valves were made to be used in low-pressure applications. Reverse flow at 1 psi is available as follows: Polypropylene with Silicone: .20 SCIM, Polysulfone with POM 2.98 SCIM, Polysulfone with POM 1.00 SCIM R2, Polysulfone with Silicone .20 SCIM, and Polysulfone with Silicone .06 SCIM 10-32 inch Female ports only. Maximum pressure is 10 psi excluding the 10-32 inch port which is rated for 75 psi.

| SKU | Description |
|-----------------|------------------------------------|
| VC-IG-1032F-PSS | 1032 Female PS Silicon Check Valve |
| VC-IG-1B-PPS | 1/16 Barb PP Silicone Check Valve |
| VC-IG-1B-PSC R2 | 1/16 Barb PS Celcon® Check Valve |
| VC-IG-1B-PSS | 1/16 Barb PS Silicone Check Valve |
| VC-IG-1S-PPS | 1/16 Shaft PP Silicone Check Valve |
| VC-IG-1S-PSC | 1/16 Shaft PS Celcon® Check Valve |
| VC-IG-1S-PSC R2 | 1/16 Shaft PS Celcon® Check Valve |
| VC-IG-1S-PSS | 1/16 Shaft PS Silicone Check Valve |
| VC-IG-2B-PPS | 1/8 Barb PP Silicone Check Valve |



| SKU | | Description | |
|-----------------|--|----------------------------------|--|
| VC-IG-2B-PSC R2 | | 1/8 Barb PS Celcon® Check Valve | |
| VC-IG-2B-PSS | | 1/8 Barb PS Silicone Check Valve | |