



POPPET CHECK VALVE

POPPET CHECK VALVES

Poppet check valves offer an easy way to control the timing and quantity of the flow of gas or vapor.



PCVM SERIES

The PCVM series is a push-in acetal poppet check valve, see available sizes and PSI options below.

SKU	DESCRIPTION
PCVM-4	1/4 Push-to-Connect Polypropylene Check Valve 2.75 psi
PCVM-4-2M	1/4 Push-to-Connect by 1/8 MNPT Check Valve .75 psi
PCVM-4-3	1/4 Push-to-Connect Polypropylene 2.75 psi
PCVM-4-5	1/4 Push-to-Connect Polypropylene Check Valve 5 psi
PCVM-4PP	1/4 Push-to-Connect Polypropylene Check Valve .3 psi
PCVM-6	3/8 Push-to-Connect Polypropylene Check Valve .3 psi

NCV CHECK VALVE SERIES



The NCV Series Nickel-Plated Brass Poppet Check Valve has options of Buna-N, EPDM or FKM seals. The operating pressure is 0 to 125 psi and the flow rate ranges from 2.5 to 9.5 scfm. Input and output port sizes are 10-32 inch UNF and 1/16 inch Barb.

SKU	Description
NCV-10F10F	10-32 Female to Female Nickel-Plated Poppet Check Valves
NCV-10F10M	10-32 Female to Male Nickel-Plated Poppet Check Valves
NCV-10F1B	10-32 Female 1/16 inch Barb Nickel-Plated Poppet Check Valves
NCV-10M10F	10-32 Male to Female Nickel-Plated Poppet Check Valves
NCV-10M1B	10-32 Male 1/16 inch Barb Nickel-Plated Poppet Check Valves
NCV-1B1B	1/16 inch Barb to 1/16 inch Barb Nickel-Plated Poppet Check Valves

PPCV SERIES



The PPCV Series Brass Poppet Check Valve has inlet sizes of 1/8, 1/4 inch, 3/8 inch, 1/2 inch, and 3/4 inch Female NPT threads and 3/8 inch and 1/2 inch Male NPT threads. Outlet sizes are 1/4 inch, 3/8 inch, 1/2 inch, and 3/4 inch, 1 Inch Female NPT threads. End body options are 1/4 inch and 3/8 inch Male Flare, and 1/4 inch Female Flare. Seal options are Buna-N, EPDM and Viton®. The cracking pressure on the 302 Stainless Steel spring is 1 psi (standard). Maximum operating pressure is 500 PSI for the 1/8 size and 1200 PSI for all the other sizes. The maximum operating temperature is 180° F. Two sizes of valves, the 3/8 FNPT and the 1-inch FNPT are available in 303 stainless.

SKU	Description
PPCV-18M	1/8 inch MNPT Brass Poppet Check Valve
PPCV-14MFL	1/4 Male Flare to 1/4 Male Flare Brass Poppet Check Valve
PPCV-18M14MFL	1/8 inch MNPT to 1/4 Male Flare Brass Poppet Check Valve
PPCV-14MFL18M	1/4 Male Flare to 1/8 MNPT Brass Poppet Check Valve
PPCV-14MFL18M-NP	1/4 Male Flare to 1/8 MNPT Nickel Plated Brass Poppet Check Valve
PPCV-14F	1/4 inch Female Brass Poppet Check Valve
PPCV-14F-1-V	1/4 inch Female Brass Poppet Check Valve <1 psi FKM Seals
PPCV-14F14MFL	1/4 FNPT to 1/4 Male Flare Brass Poppet Check Valve
PPCV-38MFL	3/8 Male Flare Brass Poppet Check Valve
PPCV-38MF	3/8 MNPT to 3/8 FNPT Brass Poppet Check Valve
PPCV-38F	3/8 FNPT to 3/8 FNPT Brass Poppet Check Valve
PPCV-12M38F	
PPCV-12F	1/2 inch Female Brass Poppet Check Valve
PPCV-12MF	1/2 inch Male 1/2 inch Female Brass Poppet Check Valve
PPCV-34F	3/4 inch Female Brass Poppet Check Valve
PPCV-34MF	3/4 inch Male 3/4 inch Female Brass Poppet Check Valve



FSPV SERIES - POPPET CHECK VALVES

The FSPV Series Poppet Check Valves come in Black PVDF, Black Polypropylene, and White Polypropylene with a choice of Buna-N, EPDM, Viton®, or Kalrez® seal. The standard spring is 302 Stainless Steel with a cracking pressure of 1/3 psi. Optional springs of 1 or 7 psi are available. These high-flow valves can be used in pressures up to 125 psi. Hastelloy spring is optional. The inlet and outlet sizes are Female NPT 1/4 inch, 3/8 inch, 1/2 inch, and 3/4 inch, and Male NPT size of 1/2 inch.

SKU	Description
FSPV-12F	1/2 FNPT Poly Poppet Check Valve
FSPV-12F12M	1/2 FNPT by 1/2 MNPT Poly Poppet Check Valve
FSPV-12M12M	1/2 MNPT by 1/2 MNPT Poly Poppet Check Valve
FSPV-12M-HV	1/2 MNPT Valve Hastelloy® FKM Poppet Check Valve
FSPV-14F	1/4 FNPT Poly FKM 302 1 psi Poppet Check Valve
FSPV-14F-.3E-WP	1/4 FNPT White Poly EPDM Seals 1/3 psi Poppet Check Valve
FSPV-14F-HV-1	1/4 FNPT Poly FKM Hastelloy® 1 psi Poppet Check Valve
FSPV-34F	3/4 FNPT Poly FKM Disk 1/3 psi Poppet Check Valve
FSPV-34F-11WC	3/4 FNPT Poly FKM 11" C 1/3 psi Poppet Check Valve
FSPV-34F-5WC	3/4 FNPT Poly FKM 5" WC Poppet Check Valve
FSPV-34F-HV	3/4 FNPT Poly FKM Disk Hastelloy® 1/3 psi Poppet Check Valve
FSPV-34F-HV-.7	3/4 FNPT Poly FKM O-Ring Hastelloy® .7 psi Poppet Check Valve
FSPV-34F-HV-1.5	3/4 FNPT Poly FKM O-Ring Hastelloy® 1.5 psi Poppet Check Valve
FSPV-34F-HV-11WC	3/4 FNPT Poly FKM O-Ring Hastelloy® 11 WC Poppet Check Valve
FSPV-38F	3/8 FNPT Poly FKM 302 1/3 psi Poppet Check Valve
FSPV-38F-E-9	3/8 FNPT Poly FKM 302 1 psi Poppet Check Valve
FSPV-38F-HV-2	3/8 FNPT Poly Hastelloy® FKM #2 O-Ring Poppet Check Valve

SPC SERIES



The SPC Series Plastic Check Valves are PVC and have 302 Stainless Steel springs, 316 Stainless Steel balls, and EPDM seals. Optional materials are Polypropylene and Nylon. 1 psi spring is standard with optional 1/3, 3, 5, 7, 10, or 12-pound springs. Also PVDF bodies in 1/4 inch female NPT only. Hastelloy spring, PTFE ball, and FKM O-rings for aggressive environments are available.

SKU	Description
SPC-2B2B-PB-12	1/8 inch Barb Valve Polypropylene Buna 12 psi
SPC-2B-PP-E-10	1/8 inch Barb Polypropylene EPDM 10 psi
SPC-2B-V-12	1/8 inch Barb Viton® with 12 Spring
SPC-2C2C	1/8 inch Compression by 1/8 inch Compression
SPC-2C2M-H-V	1/8 inch Compression by 1/8 inch MNPT Hastelloy® FKM
SPC-2F2F	1/8 inch Female by 1/8 inch Female
SPC-2F2F-HV	1/8 inch Female NPT with Hastelloy® FKM Seals
SPC-2M2M	1/8 inch Male by 1/8 inch Male
SPC-2M4F-E	1/8 inch NPT to 1/4 inch Female EPDM Seals
SPC-4B2M-HV-12	1/4 inch Barb to 1/8 inch MNPT Hastelloy® FKM 12 psi
SPC-4B2M-HV-3	1/4 inch Barb to 1/8 inch MNPT Hastelloy® FKM 3psi
SPC-4B4B	1/4 inch Barb by 1/4 inch Barb
SPC-4B4B-HV	1/4 inch Barb Hastelloy® FKM .5 psi
SPC-4B4B-V-12	1/4 inch Barb FKM with 12 spring
SPC-4B4M-BKPP-HV-1/3	1/4 inch Barb 1/4 inch Male Black Polypropylene FKM Hastelloy® 1/3 psi
SPC-4B4M-VH	1/4 inch Barb by 1/4 inch MNPT FKM/Hastelloy®
SPC-4B-V-12	1/4 inch Barb Viton® with 12 psi Spring
SPC-4B-V-H-1	1/4 inch Barb PVC FKM PTFE/Hastelloy® 1 psi
SPC-4C2M-H-V	1/4 inch Compression by 1/8 inch MNPT Hastelloy® FKM
SPC-4C4C	1/4 inch Compression by 1/4 inch Compression
SPC-4C4M-K-H-V	1/4 inch Compression 1/4 inch Male PVDF Hastelloy® FKM
SPC-4F4F	1/4 inch Female by 1/4 inch Female
SPC-4F4F-H-V	1/4 inch F by 1/4 inch Female Hastelloy® FKM
SPC-4F4F-K-H-V	1/4 inch Female PVDF Hastelloy® FKM
SPC-4F4FPP-H-V-3	1/4 inch Female Polypropylene Hastelloy® FKM 3 psi
SPC-4F4M-H-V-90PP	1/4 inch Female by 1/4 inch NPT Polypropylene Hastelloy®/ FKM 90 Micron
SPC-4F4M-K-H-V	1/4 inch Female by 1/4 inch M PVDF Hastelloy® FKM
SPC-4M4B-HV	1/4 inch Male 1/4 inch Barb FKM Hastelloy®
SPC-4M4F-H-V	1/4 inch Male by 1/4 inch Female Hastelloy® FKM 1 psi
SPC-4M4F-K-H-V	1/4 inch Male by 1/4 inch Female PVDF Hastelloy® FKM

SKU	Description
SPC-4M4M	1/4 inch Male by 1/4 inch Male
SPC-4M4M-H-V	1/4 inch Male by 1/4 inch Male Hastelloy® FKM 1 psi
SPC-4M4P	1/4 inch Male 1/4 inch Push-in
SPC-4M6B	1/4 inch Male 3/8 inch Barb
SPC-4P2M-H-V	1/4 inch Push-in by 1/8 inch Male Hastelloy®
SPC-4P4P	1/4 inch Push-in by 1/4 inch Push-in
SPC-4P4P-HV	1/4 inch Push-in Hastelloy® FKM
SPC-4P4P-SS-HV	1/4 inch Push-in Stainless Steel Ball Hastelloy® FKM
SPC-4P6B-H-V-7	1/4 inch Push-in 3/8 inch Barb Hastelloy® FKM 7
SPC-4PI2M-H-V	1/4 inch Push-in by 1/8 inch Male Hastelloy®/ FKM
SPC-4S4P	1/4 inch Stem by 1/4 inch Push-in
SPC-6B6B	3/8 inch Barb by 3/8 inch Barb
SPC-6B-F-1/3	3/8 inch Barb Fluoroelastomer 1/3 psi
SPC-6P4F-H-V	3/8 inch Push-in by 1/4 inch Female Hastelloy®/ Viton®
SPC-6P4M-H-V	3/8 inch Push-in by 1/4 inch Male Hastelloy®/ Viton®
SPC-6P-6B-H-V	3/8 inch Push-in 3/8 inch Barb Hastelloy® FKM 7 psi
SPC-6P-6B-H-V-R	3/8 inch Push-in 3/8 inch Barb Hastelloy® FKM 7 psi
SPC-6P6M-H-V RV1	3/8 inch Push-in by 3/8 inch Male Hastelloy®/ Viton®
SPC-6S6P	3/8 inch Stem by 3/8 inch Push-in
SPC-8B8B	1/8 inch Male by 1/8 inch Male



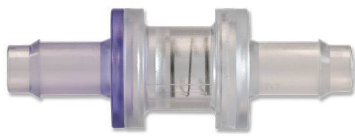
CCV SERIES - POPPET CHECK VALVES

The CCV Series are miniature Poppet Check Valves and Pressure Release Valves available with 1/8 inch Male NPT threads and 1/4 inch compression fittings. The NPT fittings are made of Polypropylene, Nylon, and ABS with O-rings made of Buna-N, EPDM, Viton®, Silicone, or fluorosilicone. The spring pressure is 20 psi. The compression fittings are made of Polypropylene with a .713 OD size.

SKU	Description
CCV-2M14C-1	1/8 MNPT by 1/4 Comp Polypropylene / EPDM 1 psi
CCV-2M14C-1.5	1/8 MNPT by 1/4 Comp Polypropylene / EPDM 1.5 psi
CCV-2M14C-3	1/8 MNPT by 1/4 Comp Polypropylene / EPDM 3 psi
CCV-2M14C-3-PPS	1/8 MNPT by 1/4 Comp Polypropylene / Silicone 3 psi
CCV-2M-3	1/8 MNPT by 1/8 MNPT Polypropylene / EPDM 3 psi
CCV-4C6M-3	1/4 Comp by 3/8 MNPT Polypropylene / EPDM 3 psi

SKU	Description
CCV-4M14C-1	1/4 MNPT by 1/4 Comp Polypropylene / EPDM 1 psi
CCV-4M-4	1/4 MNPT by 1/4 MNPT Polypropylene / EPDM 4 psi

MSV SERIES | SPRING-LOADED CHECK VALVES



Pneuline Supply, Inc. manufactures the MSV Series inline spring-loaded check valves in a class 8 clean room environment specifically for use in medical applications. Custom molding allows for customer specific requirements which include resin options, connector variations, and O-ring selections. Available resin options include Polycarbonate, Radiation-stable Polycarbonate, and Kynar® 720 (PVDF). Other custom resins are available upon request. Barbed connectors are available in 1/8 inch, 3/16 inch, and 1/4 inch standard flow or 1/4 inch high flow, 5/16 inch, and 3/8 inch. Springs are made of 316 Stainless Steel or Hastelloy® in .022 psi, .25 psi, .50 psi, 1 psi, 5 psi, or 10 psi. Passivated springs are available. O-ring options are Silicone USP class VI, Fluorosilicone, EPDM, Viton®, or Kalrez®. To make this product truly unique, we offer custom laser marking for identification purposes such as part number sequencing, lot numbers, or company name.

**Poppet and Piston are optional.*

[Download the MSV Series Flyer](#)

SKU	Description
MSV-2B-AC-6	1/8 Valve Acetal EPDM 6 PSI
MSV-2B-AC-E-.25	1/8 Valve Acetal EPDM .22
MSV-2B-AC-E-1	1/8 Valve Acetal EPDM 1 PSI
MSV-2B-AC-E-5	1/8 Valve Acetal EPDM 5 PSI
MSV-3BAC-.75V-41	3/16 Acetal .75 Viton with 41 micron
MSV-3B-AC-B-1	3/16 Valve Acetal Buna 1
MSV-3B-AC-E-1	3/16 Valve Acetal EPDM 1
MSV-3B-K720-1SS-V	3/16 Kynar 720 Valve Viton 1 PSI 316 SS
MSV-3B-K720-E-.5H	3/16 Kynar 720 Valve EPDM .5 Hastelloy®
MSV-3B-PC-E-.5	3/16 Barb PC EPDM 1/2 PSI
MSV-3B-PC-E-.75	3/16 Barb PC Valve EPDM .75
MSV-3B-PC-E-1	3/16 Barb PC EPDM 1PSI
MSV-3B-Rx2530-6WC-S	3/16 Barb RSPC Valve 6WC Silicone
MSV-4B-PC-S-.22PI	1/4 Valve Polycarb Silicone .22

SKU	Description
MSV-4B-PC-S-.5	1/4 Valve Polycarb Silicone .5
MSV-5B-Rx2530-6WC-S	5/16 Barb RSPC Spring Valve 6WC Silicone
MSV-6B-AC-.22 E	3/8 Valve Acetal .22 EPDM
MSV-6B-AC-E-1	3/8 Valve Acetal EPDM 1 PSI
MSV-6B-K720-E-1	3/8 Valve Kynar EPDM 1 PSI
MSV-6B-Rx2530-6WC-S	5/16 Barb RSPC Spring Valve 6WC Silicone